

Castle Provincial Park & Wildland Provincial Park Designated Summer Trails 2026

Valid for May 1 to November 30

Map Legend

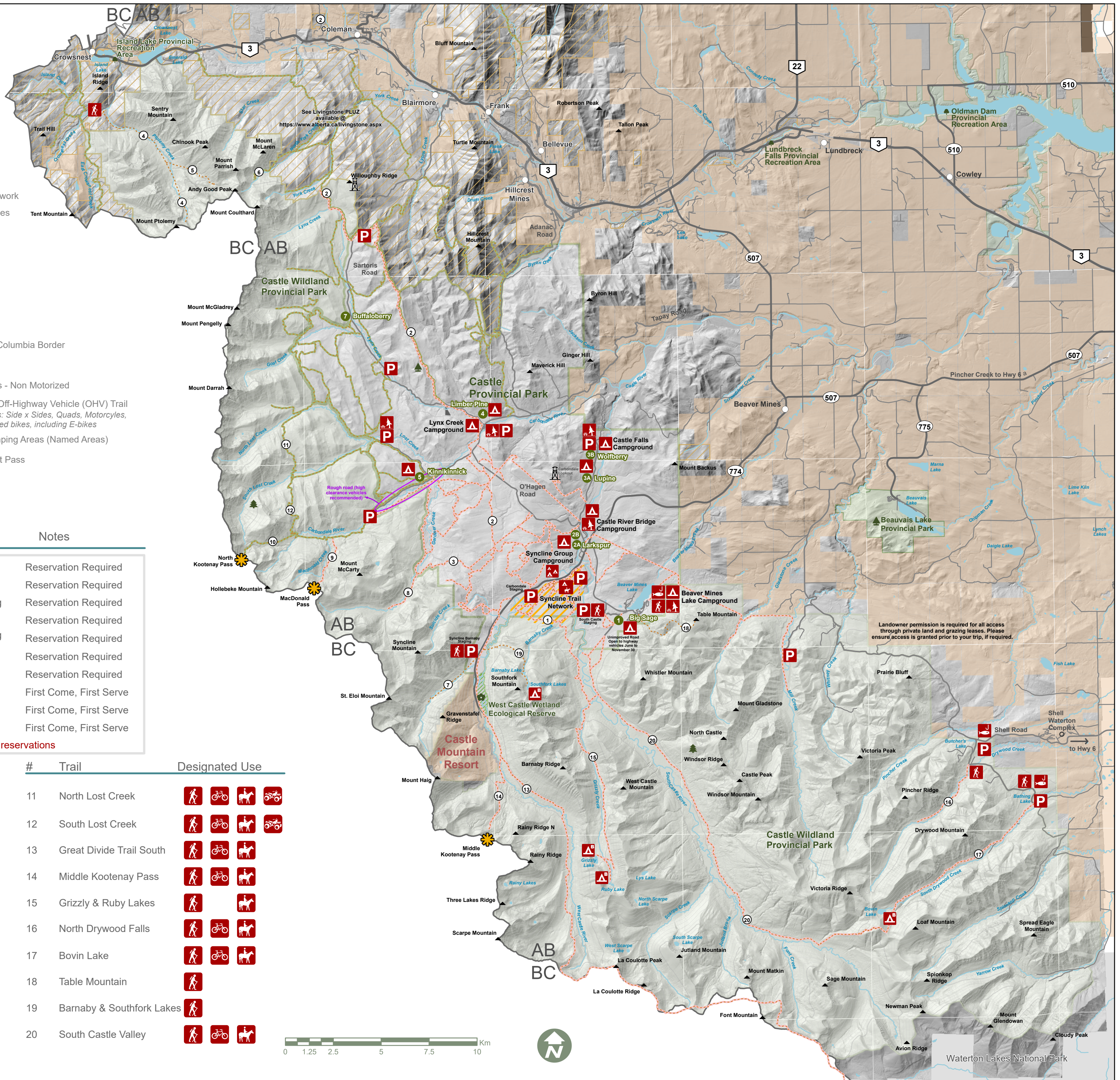
- Castle Provincial Park
- Castle Wildland Provincial Park
- Private Land
- Livingstone PLUZ
- Other Provincial Parks
- Ecological Reserve
- Campground
- Backcountry Campground
- Group Use Campground
- Equestrian Campground
- Day Use Area
- Fishing
- Staging / Parking
- Trailhead
- View Point
- Washrooms*
* Pit toilets available at most day use, camping and staging areas
- Syncline Trail Network
- Towns and Villages
- Mountain
- Pass
- Lakes
- Rivers / Streams
- Roads - Paved
- Roads - Gravel
- Alberta - British Columbia Border
- Hiking Trail
- Resource Routes - Non Motorized
- Multi-Use Trail / Off-Highway Vehicle (OHV) Trail
** Permitted OHVs: Side x Sides, Quads, Motorcycles, and Power - assisted bikes, including E-bikes
- Designated Camping Areas (Named Areas)
- MD of Crowsnest Pass

Campground	# of Sites	Services	Notes
Syncline Group A	11	Power	Reservation Required
Syncline Group B	10	Power	Reservation Required
Beaver Mines Lake	5 Cabins	Comfort Camping	Reservation Required
Beaver Mines Lake	81	Basic	Reservation Required
Castle River Bridge	5 Cabins	Comfort Camping with Power	Reservation Required
Castle River Bridge	25	Power	Reservation Required
Castle Falls	46	Basic	Reservation Required
Lynx Creek	27	Basic	First Come, First Serve
Equestrian Campground	10	Basic	First Come, First Serve
Designated Camping Areas # 1-5,7		Basic	First Come, First Serve

Please check: shop.albertaparks.ca for reservations

#	Trail	Designated Use	#	Trail	Designated Use
1	Syncline Trail Network		11	North Lost Creek	
2	Great Divide Trail North		12	South Lost Creek	
3	Gardiner Creek / Great Divide Connector		13	Great Divide Trail South	
4	Mount Ptolemy		14	Middle Kootenay Pass	
5	Andy Good Base		15	Grizzly & Ruby Lakes	
6	North York Creek / Plane Crash		16	North Drywood Falls	
7	Syncline Brook		17	Bovin Lake	
8	Gardiner Creek		18	Table Mountain	
9	MacDonald Pass		19	Barnaby & Southfork Lakes	
10	North Kootenay Pass		20	South Castle Valley	

** Electronic bikes (E-bikes) are permitted on OHV trails only



Landowner permission is required for all access through private land and grazing leases. Please ensure access is granted prior to your trip, if required.

Waterton Lakes National Park