

Peaceful Valley Provincial Recreation Area

Enhancing accessible day-use experiences

What is Peaceful Valley Provincial Recreation Area?

Peaceful Valley Provincial Recreation Area (PRA) is located 100 kilometres southwest of Edmonton near Pigeon Lake. It is a small site established and designated in 1997. PRAs support outdoor recreation and tourism, in a natural or near-natural setting. This park is regionally significant and provides immersive and therapeutic nature experiences to seniors and persons with disabilities.

An additional 37 hectares of land have been added to this PRA. These lands were donated to the Alberta Sport Connection Foundation with the intent to be added to this site. This addition enhances recreation opportunities and ensures conservation of Battle River views.

Why is this area important?

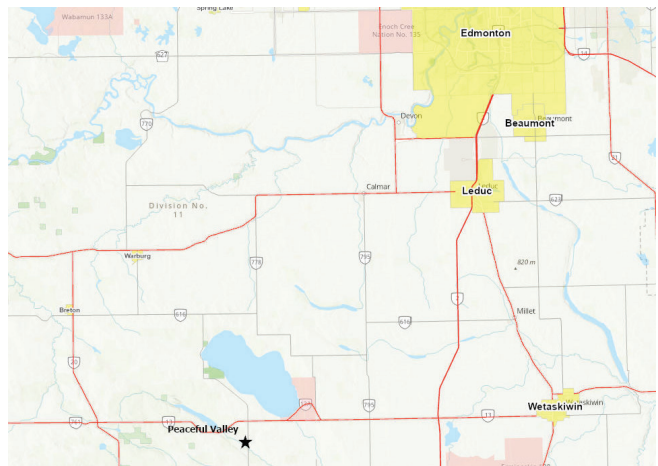
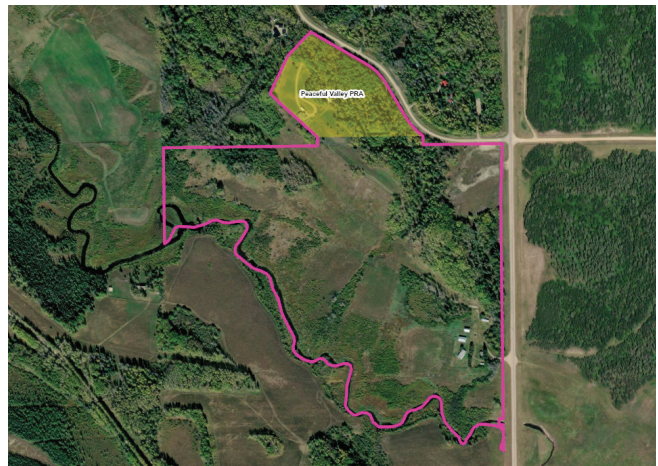
This PRA contains a day lodge that serves seniors, the terminally ill and Albertans with disabilities. It supports day use, and connects clients to a beautiful, scenic and serene location. Visitors can immerse themselves in nature, take in the scenery of the Battle River valley, and relax in the comfort of the craftsmen style lodge on site. The facilities accommodate visitors and caregivers with wheelchair access provided on two kilometres of trails, and in the lodge.

While the primary focus of this site is to enhance visitors' experience and quality of life; a secondary outcome is conservation. This addition of 37 hectares will ensure that scenic viewscapes are conserved, maintained and will enhance site-based recreation through trail development on these lands.

The Peaceful Valley Advisory Committee is supportive of this addition and the enduring benefits it would provide to Albertans.

Why was there no consultation before this park was expanded?

This land was donated to the department. No reduction in public use has occurred with the expansion of this existing PRA.



What activities are permitted?

Recreation Use

Recreation opportunities in Peaceful Valley PRA are focused on providing day-use to seniors, the terminally ill and person with disabilities.

There are wheelchair accessible amenities including a day use lodge and trails. Motorized recreation and overnight use is not permitted.

Land Use

Surface access for new petroleum and natural gas, mining and mineral extraction, coal development, surface materials extraction and commercial forestry are not permitted.

Summary

The expansion of Peaceful Valley PRA adds titled lands previously held by the Alberta Sport Connection Foundation. It enhances opportunities for connection with nature in the beautiful Battle River valley with a focus on accessibility for persons who are ill, disabled and elderly and for whom most recreation sites pose challenges in terms of access and use.