

Hunter Information Package

North Bruderheim Provincial Recreation Area

Wildlife Management Unit (WMU) 250

If you have questions or concerns please contact a Conservation Officer or park staff at 780-922-3293 or 780-672-7274. For emergencies please dial 911. To report poaching please call Report-A-Poacher at 1-800-642-3800.

Contents

Introduction	3
North Bruderheim PRA Map	5
Access Information	6
Successful Hunter Information	7
Wildlife Management Assistance	9
Important Park Specific Information for Hunters	11
Extra Word of Caution	13



Hunter Information Package

North Bruderheim Provincial Recreation Area
Wildlife Management Unit (WMU) 250

Introduction



Hunter Information Package

North Bruderheim Provincial Recreation Area
Wildlife Management Unit (WMU) 250

There are hunting opportunities on more than 85 percent of the land base in Alberta's Parks system. Hunting is permitted in all Wildland Provincial Parks and some Provincial Parks and Provincial Recreation Areas.

Hunting is a supported activity in Alberta Parks because of its alignment with preserving natural heritage, including traditional land use, providing exceptional recreation opportunities, providing tools for wildlife management, and getting people outside and connecting with nature.

Alberta Parks are enjoyed by a wide range of recreational users year-round and in Provincial Parks and Provincial Recreation Areas, where hunting is allowed, Firearm Discharge Permits are required to address public safety and wildlife management issues as well as to protect sensitive areas and species.

North Bruderheim is designated as a Provincial Recreation Area and is managed by the Parks Operations Division of Alberta Environment and Parks. It is located

in central Alberta near Bruderheim and the North Saskatchewan River, and is a valuable conservation area providing a space for recreational activities to occur.

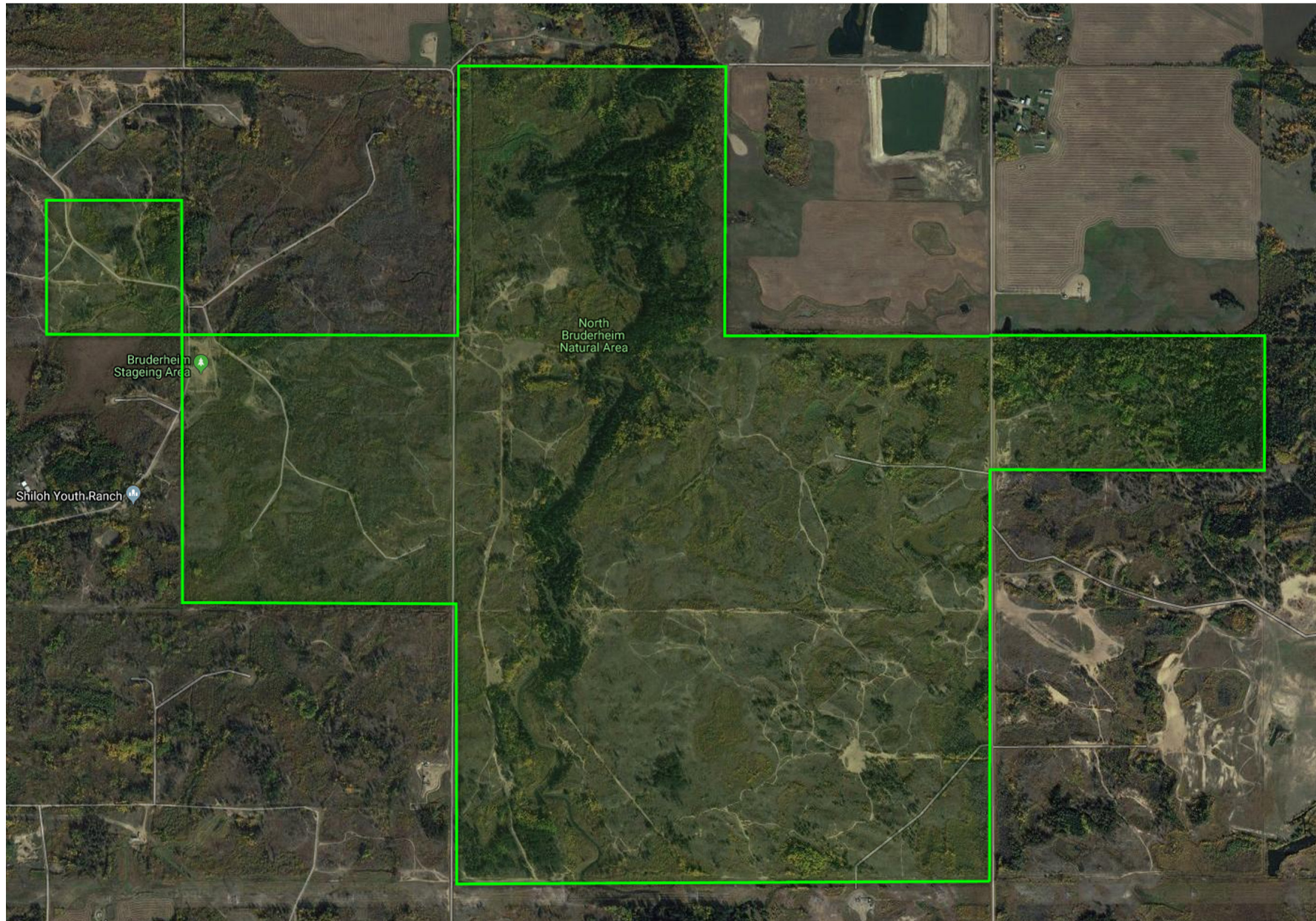
North Bruderheim Provincial Recreation Area is filled with wildlife representative of the Boreal Forest – Dry Mixedwood Sub-Region that it sits in.

Hikers, community groups, park employees, volunteers and hunters, as well as other recreationalists including OHV users, are present at all times of year at North Bruderheim Provincial Recreation Area. Private residences, farms and work sites that surround the Provincial Recreation Area are also occupied year round. Please be aware of their presence and take appropriate measures to ensure you are being safe and aware at all times.



Hunter Information Package
North Bruderheim Provincial Recreation Area
Wildlife Management Unit (WMU) 250

North Bruderheim PRA Map



Access Information

Access into the park is by a variety of ways including vehicle, off-highway vehicle (OHV), horse or foot power. OHVs can be used inside the park, however usage must comply with all applicable regulations. Hunters may use OHVs to travel around the park, but OHVs (including snowmobiles) cannot be operated on any roads, including Strathcona County roads (please check with Strathcona County for the most up to date information). OHVs and horses are to stay on established trails; please do not traverse off the trails or through the bush. Please be aware there may be adverse conditions that may make conditions poor (e.g. muddy or snowed in). On highway vehicles (like Jeeps and 4x4s) are NOT permitted on the established OHV trails. There are multi use trails are open to hunting.



Hunter Information Package

North Bruderheim Provincial Recreation Area
Wildlife Management Unit (WMU) 250



Please stay on designated trails and roads. Do not drive around water holes as it damages the trail and increases the size of the disturbances to the land.

Successful Hunter Information

Emergency Preparedness

Be prepared for weather changes including precipitation, unpredictable weather, and fluctuating temperature.

Be equipped with survival gear – matches, flashlight, warm clothes, compass, extra batteries, flagging tape, food, water. Carry bear spray and [know how to use it](#).*

It is advised to carry flagging tape so you can mark your kill site (so you can find it again) and find your path back to your vehicle. Make sure all flagging is removed on your way out.

Be prepared to spend the night outdoors. Unpredictable precipitation and weather create a need for 4x4s in some areas and road conditions are subject to change. Weather can make travel hazardous and you might find yourself unable to travel with or without a vehicle.



Hunter Information Package

North Bruderheim Provincial Recreation Area
Wildlife Management Unit (WMU) 250

*<https://youtu.be/VDgBY2PbnO4>

Tell a friend or family member where you are going, how to contact you, what time you expect to return, and make sure they know who to contact if you are late and they are unable to contact you.

Hunters should use caution and be aware that there are many predators in the area including bears, wolves and coyotes. Should it be necessary to leave your animal overnight, be sure to leave human scent around the carcass and drag the offal (organs) away from the carcass as these predators/scavengers will typically consume those parts first.



Hunter Information Package
North Bruderheim Provincial Recreation Area
Wildlife Management Unit (WMU) 250

Wildlife Management Assistance

Not frequently expected in North Bruderheim Provincial Recreation Area but if found, please report any ear tags to Conservation Officers upon discovery. Ear tags may be white with black numbers, or orange stating “DO NOT EAT” followed by a phone number. The “do not eat” tag is placed on animals that have been tranquilized; hunters must tag their animal and can still expect to salvage their harvest, but depending on when the animal was tranquilized, the hunter will find out whether the meat is safe to consume (or whether a replacement tag may be issued).

For deer hunters – WMU 250 has mandatory testing in effect. Deer heads should be submitted to the nearest Chronic Wasting Disease freezer drop off location, which is currently the north Edmonton location of Cabelas. Please refer to the website below for further details or alternate drop off sites. Please refer to [Chronic Wasting Disease – Information for Hunters](https://www.alberta.ca/chronic-wasting-disease-information-for-hunters.aspx)* for further information.



Hunter Information Package

North Bruderheim Provincial Recreation Area
Wildlife Management Unit (WMU) 250

*<https://www.alberta.ca/chronic-wasting-disease-information-for-hunters.aspx>

For more information on [Indigenous hunting and fishing in Alberta](#)** please refer to the webpage.

Contact the office at 403-340-7691 for further questions or concerns.



Hunter Information Package

North Bruderheim Provincial Recreation Area
Wildlife Management Unit (WMU) 250

**<https://www.alberta.ca/indigenous-hunting-and-fishing-in-alberta.aspx>

Important Park Specific Information for Hunters



Hunter Information Package
North Bruderheim Provincial Recreation Area
Wildlife Management Unit (WMU) 250

1. As a reminder, hunters must also abide by federal legislation regarding firearm transport and storage in a vehicle (particularly for times when a firearm is left unattended). The park does require that firearms not in use must be encased.
2. The permit holder shall not discharge a firearm within 183 metres (200 yards) of park facilities.
3. If a gate is open, please leave it open; if it is closed, please close it behind you.
4. Hunters must salvage their animal in accordance with the provincial Wildlife Regulations and will not receive assistance from park employees.
5. Do not cut any fences to provide easy access to your harvested animal; this includes any of the interior fences or the fences belonging to surrounding landowners.

6. Be a conscientious neighbour! If you wish to hunt on adjacent private land or you need to access private land in order to salvage your animal on adjacent private land, you must obtain permission from the landowner before doing so to avoid trespassing.
7. Open fires are not permitted in North Bruderheim Provincial Recreation Area.
8. Tree stands are permitted only if they are portable, man-made, self-contained (do not build it using natural materials from the park), and do no permanent damage (do not remove/knock down dead or live branches) to the tree(s) and surrounding vegetation. Tree stands must be taken down at the end of each hunt (every day) to ensure fairness and equal access to hunting locations throughout the season.



Hunter Information Package
North Bruderheim Provincial Recreation Area
Wildlife Management Unit (WMU) 250

Extra Word of Caution

North Bruderheim Provincial Recreation Area is close to the town of Bruderheim and the North Saskatchewan River. There are many active recreational users in the area. Please always be aware of your location.

There are topography changes in this area; go slow, and use caution on hills.

In case of an emergency, call 911. The nearest emergency medical care can be accessed at the Fort Saskatchewan Community Hospital in Fort Saskatchewan (non-emergency phone at 780-998-2256), or the Lamont Health Care Centre in Lamont (not 24/7, non-emergency phone at 780-895-2211).

To report concerns to a Conservation Officer, call 403-340-7691.



Hunter Information Package

North Bruderheim Provincial Recreation Area
Wildlife Management Unit (WMU) 250