

Hunter Information Package

Castle Provincial Park

Wildlife Management Unit (WMU) 400

If you have questions or concerns please contact a Conservation Officer or park staff at 403-627-1165. For emergencies please dial 911. To report poaching please call Report-A-Poacher at 1-800-642-3800.

Contents

Introduction	3
Castle PP Map	5
Access Information	6
Successful Hunter Information	7
Wildlife Management Assistance	9
Important Park Specific Information for Hunters	10
Extra Word of Caution	13



Hunter Information Package
Castle Provincial Park
Wildlife Management Unit (WMU) 400

Introduction

There are hunting opportunities on more than 85 percent of the land base in Alberta's Parks system. Hunting is permitted in all Wildland Provincial Parks and some Provincial Parks and Provincial Recreation Areas.

Hunting is a supported activity in Alberta Parks because of its alignment with preserving natural heritage, including traditional land use, providing exceptional recreation opportunities, providing tools for wildlife management, and getting people outside and connecting with nature.

Alberta Parks are enjoyed by a wide range of recreational users year-round and in Provincial Parks and Provincial Recreation Areas, where hunting is allowed, Firearm Discharge Permits are required to address public safety and wildlife management issues as well as to protect sensitive areas and species.

Castle is designated as a Provincial Park and is managed by the Parks Operations Division of Alberta Environment and Parks. It is located in South West



Hunter Information Package
Castle Provincial Park
Wildlife Management Unit (WMU) 400



Alberta near Pincher Creek and the parks are part of the Waterton Biosphere Reserve, and share borders with WatertonGlacier International Peace Park to the south, the Crowsnest Pass to the north and the Flathead River Valley of British Columbia to the west. Extensive wildlife corridors link all these unique areas and together they form part of the extraordinary Crown of the Continent ecosystem. Wildlife in this area is habitat for Mountain Goat, Bighorn Sheep, Grizzly Bear, Wolverine, and Elk.

Hikers, cyclists, snowshoers, equestrian users, bikers, school children, community groups, park employees, volunteers and hunters are present at all times of year at Castle Provincial Park. Please be aware of their presence and take appropriate measures to ensure you are being safe and aware at all times.



Hunter Information Package
Castle Provincial Park
Wildlife Management Unit (WMU) 400

Castle Provincial Park & Wildland Provincial Park Designated Summer Trails 2018

Map Legend

Castle Provincial Park

Castle Wildland Provincial Park

Other Provincial Parks

Ecological Reserve

Campground

Backcountry Campground

Group Use Campground

Day Use Area

Equestrian

Fishing

Staging / Parking

Trailhead

Off-Highway Vehicle (OHV) Staging

Washrooms*
*Pit toilets available at most day use, camping and staging areas

Towns and Villages

Mountain

Pass

Lakes

Rivers / Streams

Roads - Paved

Roads - Gravel

Alberta - British Columbia Border

Hiking Trail

Hiking / Biking / Equestrian Trail

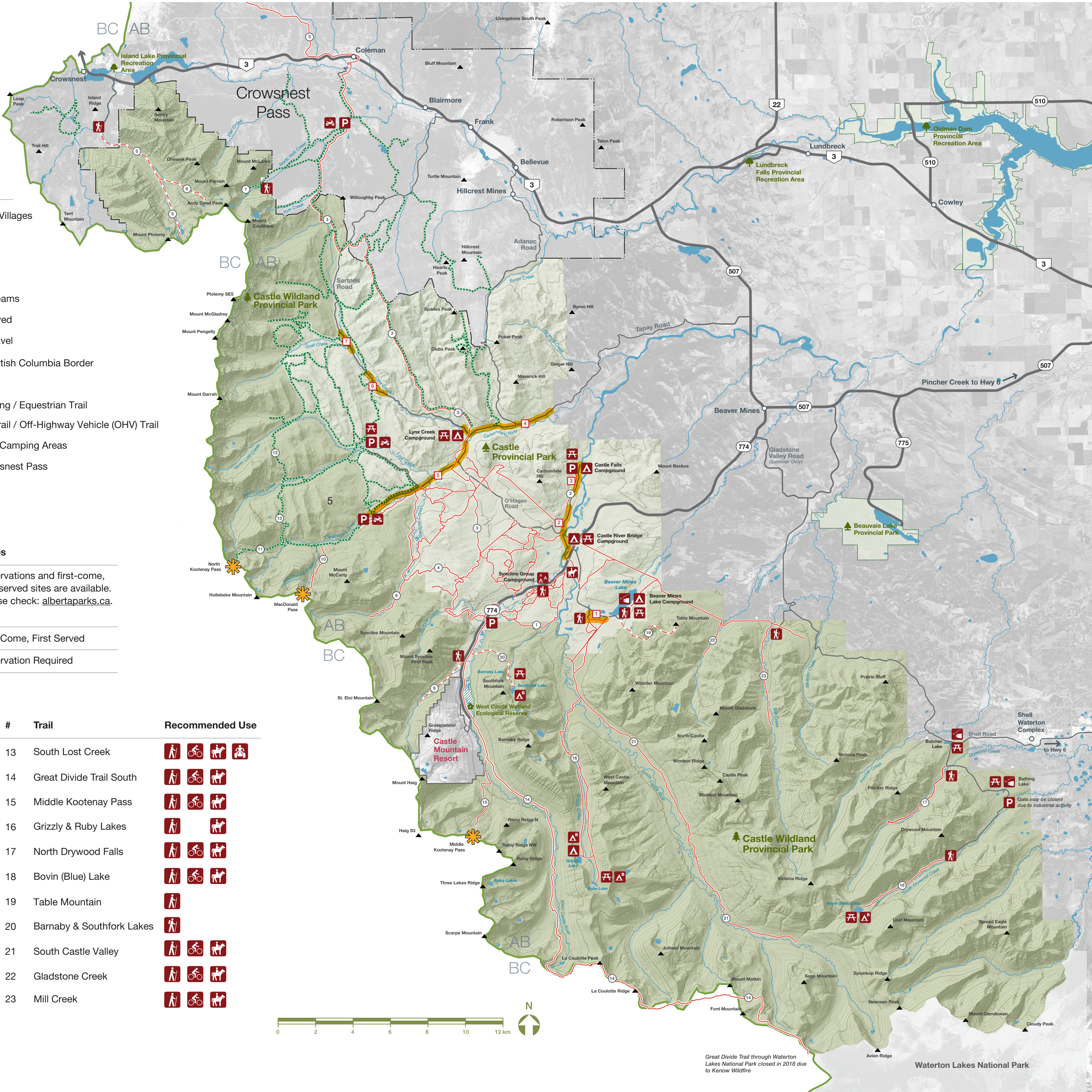
Multi-Use Trail / Off-Highway Vehicle (OHV) Trail

Designated Camping Areas

MD of Crowsnest Pass

Campground	# of Sites	Services	Notes
Beaver Mines Lake	86	Basic	Reservations and first-come, first-served sites are available. Please check: albertaparks.ca .
Castle Falls	47	Basic	
Castle River Bridge	30	Basic	
Lynx Creek	28	Basic	First Come, First Served
Syncline Group	20	Basic	Reservation Required

#	Trail	Recommended Use	#	Trail	Recommended Use
1	Syncline Trail Network		13	South Lost Creek	
2	Castle Falls Grassland		14	Great Divide Trail South	
3	Great Divide Trail North		15	Middle Kootenay Pass	
4	Gardiner Creek / Great Divide Connector		16	Grizzly & Ruby Lakes	
5	Mount Ptolemy		17	North Drywood Falls	
6	Andy Good Base		18	Bovin (Blue) Lake	
7	North York Creek / Plane Crash		19	Table Mountain	
8	Syncline Brook		20	Barnaby & Southfork Lakes	
9	Gardiner Creek		21	South Castle Valley	
10	MacDonald Pass		22	Gladstone Creek	
11	North Kootenay Pass		23	Mill Creek	
12	North Lost Creek				



Great Divide Trail through Waterton Lakes National Park closed in 2018 due to Kenow Wildfire

Waterton Lakes National Park

Snowmobiles (OHVs)

Snowmobiles are permitted from *December 1 to April 30* and only on designated winter snowmobiling trails and areas in Castle Provincial Park and Castle Wildland Park, as indicated on the trail map and on park signage. Please be respectful when using trails, be cautious of non-motorized trail users, and stay clear of wildlife.

Every snowmobile operating in the Castle parks must have:

- Valid registration and insurance
- Exhaust muffler with spark arrester
- Approved helmets for all off-highway vehicle users
- Direct adult supervision for operators under the age of 14 years
- A licence plate that is securely attached on front or rear of OHV and visible to other operators
- Tail lamp on the vehicle rear capable of emitting a red light visible from at least 60 metres (185 feet)
- At least one white headlamp on the front must be of sufficient intensity to reveal a person, another vehicle or a thing that is at least 60 metres ahead (185 feet)

To operate a snowmobile in the Castle Parks, people from outside Alberta:

- Carry proof of residency
- Follow the rules, regarding registration of the vehicle and the display of license plates, that are required by their home jurisdiction
- Produce valid proof of insurance
- If you have been in Alberta for more than 30 days, all Alberta requirements apply

Know Before You Go

It's your responsibility to become familiar with the activities allowed in this area before you visit. Refer to the information in this publication for further details. Pick up or download the Alberta Parks regulations brochure. Look for park information kiosks and contact park staff if you have any questions.



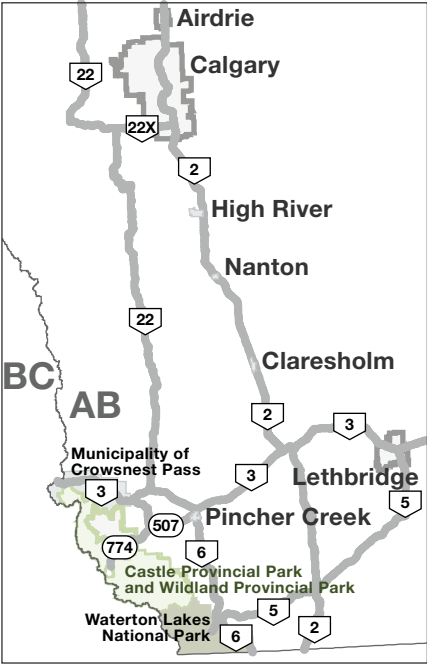
Tobogganing

Castle Provincial Park Map

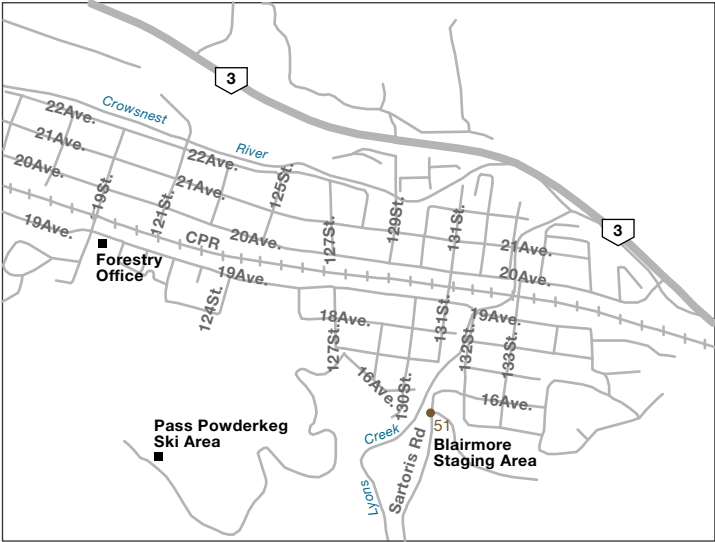
Legend

- Castle Wildland Provincial Park
 - Castle Provincial Park
 - Parks and Protected Areas
 - Private Land
 - Facility Zones¹
 - Random Ride Areas Designated
 - Winter Trails
 - Trail Intersections
 - Cross-Country Ski Area
 - Downhill Skiing
 - Fat Biking
 - Forestry Office
 - Ice Fishing
 - Information Kiosk
 - Parking
 - Picnic/Day Use Area
 - Snowmobile Shelter
 - Snowshoeing
 - Staging Area/Parking
 - Warming Hut
 - Accessible
 - Towns and Villages
 - Fire Lookout
 - Mountain
 - Pass
 - Roads - Paved
 - Roads - Gravel
- ¹ Refer to Hunting Regulations and Firearms Discharge Permits

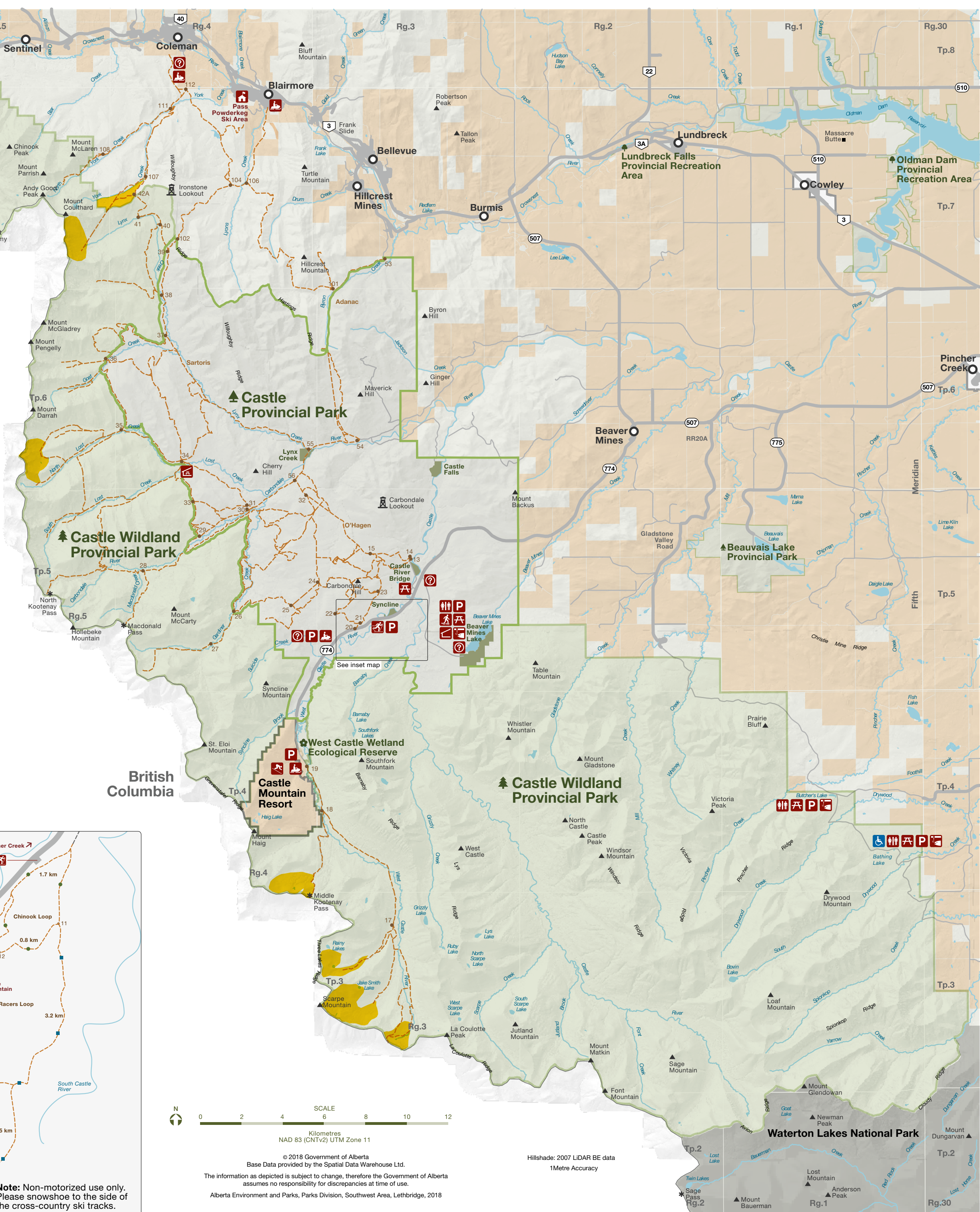
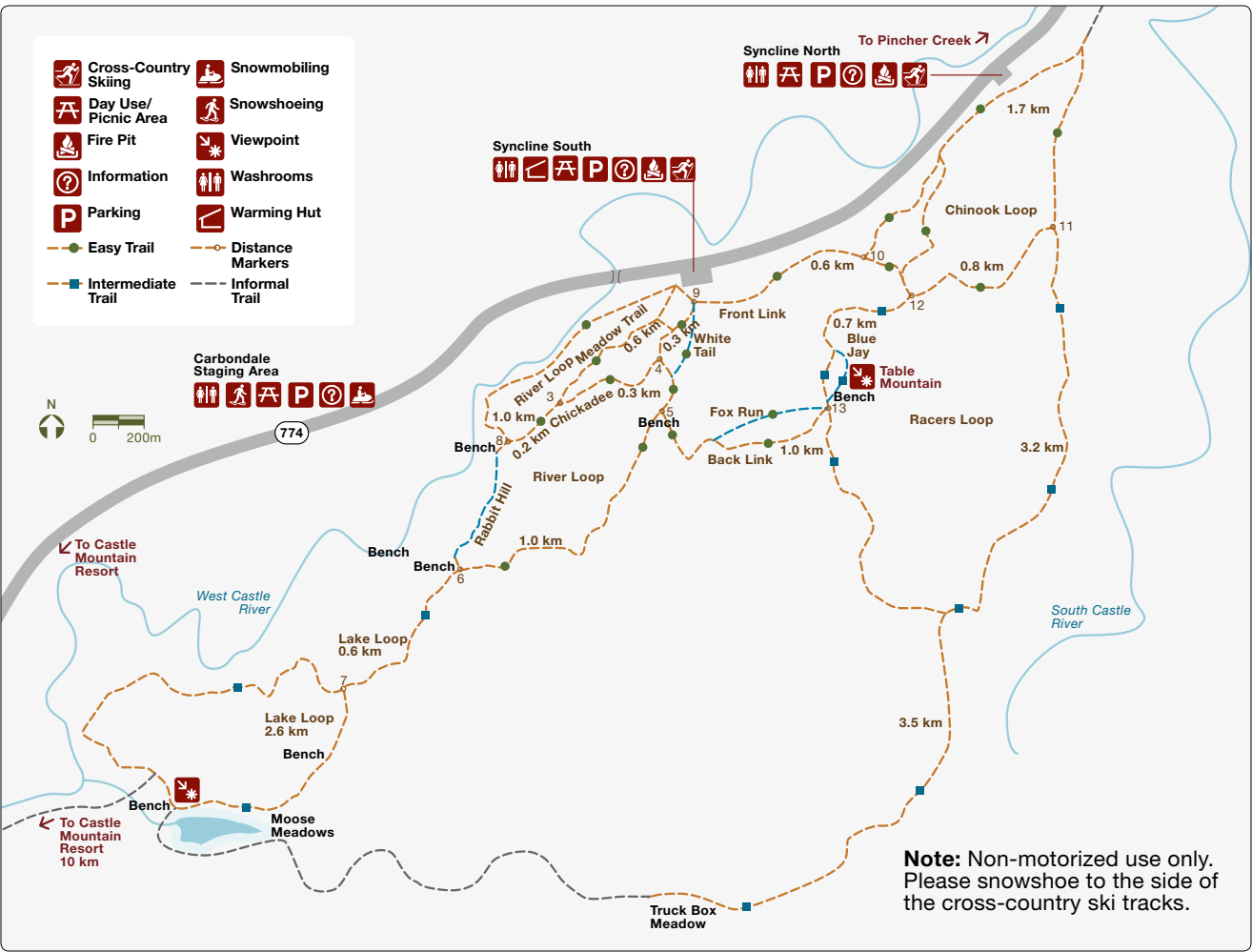
Directional Map



Blairmore Access



Syncline Cross-Country Ski Area Map



Access Information

Access into the park is by a variety of ways including vehicle, horse or foot power. Off-highway vehicles (OHVs) can be used inside the park on select trails that are designated and marked for OHV use from May 1st to November 30th. Snowmobiles are only allowed from December 1st to April 30th. Hunters may also use pedal bicycles, skis, and horses to travel around the park. All vehicles registered for highway use are only allowed on highways and secondary highways that access the Provincial Park. Vehicles must be parked in designated parking areas, or safely off to the side of the road when visitors are taking part in any recreational activity. Horses are to stay on designated trails; please do not traverse off the trails or through the bush. Please be aware there may be adverse conditions that may make conditions poor (e.g. muddy or snowed in). On highway vehicles (like Jeeps and 4x4s) are NOT permitted on trails. All multi use trails are open to hunting. Motorized travel within rivers and creeks is detrimental and prohibited.



Hunter Information Package
Castle Provincial Park
Wildlife Management Unit (WMU) 400



Please stay on designated trails and roads. Do not drive around water holes as it damages the trail and increases the size of the disturbances to the land.

Successful Hunter Information

Emergency Preparedness

Be prepared for weather changes including precipitation, unpredictable weather, and fluctuating temperature.

Avalanches are a significant threat to safety and can occur during hunting season. Check Avalanche Canada for reports and updates at avalanche.ca.

Be equipped with survival gear – matches, flashlight, warm clothes, compass, extra batteries, flagging tape, food, water. Bear spray is advised and be aware on [how use it appropriately](#).*

It is advised to carry flagging tape so you can mark your kill site (so you can find it again) and find your path back to your vehicle. Make sure all flagging is removed on your way out.

Be prepared to spend the night outdoors. Unpredictable



Hunter Information Package
Castle Provincial Park
Wildlife Management Unit (WMU) 400

*<https://youtu.be/VDgBY2PbnO4>

precipitation and weather create a need for 4x4s in some areas and road conditions are subject to change. Weather can make travel hazardous and you might find yourself unable to travel with or without a vehicle.

Tell a friend or family member where you are going, how to contact you, what time you expect to return, and make sure they know who to contact if you are late and they are unable to contact you.

Hunters should use caution and be aware that there are many predators in the area including Grizzly and Black Bears, Coyotes, Cougars, and Wolves. Should it be necessary to leave your animal overnight, be sure to leave human scent around the carcass and drag the offal (organs) away from the carcass as these predators/scavengers will typically consume those parts first.



Wildlife Management Assistance

Not frequently expected in Castle Provincial Park, but if found, please report any ear tags to Conservation Officers upon discovery. Ear tags may be white with black numbers, or orange stating “DO NOT EAT” followed by a phone number. The “do not eat” tag is placed on animals that have been tranquilized; hunters must tag their animal and can still expect to salvage their harvest, but depending on when the animal was tranquilized, the hunter will find out whether the meat is safe to consume (or whether a replacement tag may be issued).

For deer hunters. Please refer to [Chronic Wasting Disease – Information for Hunters](https://www.alberta.ca/chronic-wasting-disease-information-for-hunters.aspx)* for further information.

For more information on [Indigenous hunting and fishing in Alberta](https://www.alberta.ca/indigenous-hunting-and-fishing-in-alberta.aspx)** please refer to the webpage.

Contact the office at 403–340–7691 for further questions or concerns.



Hunter Information Package
Castle Provincial Park
Wildlife Management Unit (WMU) 400

*<https://www.alberta.ca/chronic-wasting-disease-information-for-hunters.aspx>

**<https://www.alberta.ca/indigenous-hunting-and-fishing-in-alberta.aspx>

Important Park Specific Information for Hunters



Hunter Information Package
Castle Provincial Park
Wildlife Management Unit (WMU) 400

1. As a reminder, hunters must also abide by federal legislation regarding firearm transport and storage in a vehicle (particularly for times when a firearm is left unattended). The park does require that firearms not in use must be encased.
2. The permit holder shall not discharge a firearm within 183 metres (200 yards) of park facilities. Details are listed in the terms and conditions and located on the map.
3. Grazing allotment holders hold an annual cattle drive along Highway 774 in late fall. Be prepared for short delays in traffic and to stop for cattle/workers.
4. You cannot access a pasture if there are cattle inside or if it is marked as 'closed'. If you wish to access a pasture that is marked as 'open' please leave the gate as you found it. If a gate is open, please leave it open; if it is closed, please close it behind you.

5. Hunters must salvage their animal in accordance with the provincial Wildlife Regulations and will not receive assistance from park employees.
6. Do not cut any fences to provide easy access to your harvested animal; this includes any of the interior pasture fences or the fences belonging to surrounding landowners.
7. Be a conscientious neighbour! If you wish to hunt on adjacent private land or you need to access private land in order to salvage your animal on adjacent private land, you must obtain permission from the landowner before doing so to avoid trespassing.
8. Open fires are only permitted in the engineered facilities (such as wood stoves and fire pits with steel rings) that are provided. Campfires are prohibited at times when a fire ban is in place. Firewood is available for purchase in nearby communities. Do not bring firewood from another province into Alberta. The collection of wood or any dead vegetation for

burning must be authorized from a Conservation Officer or a permit.

9. Camping is only permitted in Castle Provincial Park in designated camping areas. Please see reserve.albertaparks.ca for more information. Please note the adjacent Castle Wildland Provincial Park is a different classification and undesignated backcountry camping is allowed.
10. Tree stands are permitted only if they are portable, man-made, self-contained (do not build it using natural materials from the park), and do no permanent damage (do not remove/knock down dead or live branches) to the tree(s) and surrounding vegetation. Tree stands must be taken down at the end of each hunt (every day) to ensure fairness and equal access to hunting locations throughout the season.

Extra Word of Caution

Castle Provincial Park includes WMU 400 which may have different regulations than others. Please contact [Alberta Fish and Wildlife](http://www.albertaregulations.ca/huntingregs/)* for more information.

Castle Provincial Park borders Castle Wildland Provincial Park and private lands. There are numerous campgrounds and recreational activities in the area. Please always be aware of your location and others.



Hunter Information Package

Castle Provincial Park
Wildlife Management Unit (WMU) 400

*<http://www.albertaregulations.ca/huntingregs/>

In case of an emergency, call 911. To report concerns to a Conservation Officer, call 403-627-1165. The nearest hospital is located in Pincher Creek. The non-emergency line for the hospital is 403-627-1234.