

# Hunter Information Package

## Sulphur Gates Provincial Recreation Area

### Wildlife Management Unit (WMU) 444

If you have questions or concerns please contact a Conservation Officer or park staff at 780-827-7393 in Grande Cache or 780-865-8395 in Hinton. For emergencies please dial 911. To report poaching please call Report-A-Poacher at 1-800-642-3800.

# Contents

Introduction	3
Sulphur Gates PRA Map	5
Access Information	6
Successful Hunter Information	7
Wildlife Management Assistance	9
Important Park Specific Information for Hunters	10
Extra Word of Caution	13



## **Hunter Information Package**

Sulphur Gates Provincial Recreation Area  
Wildlife Management Unit (WMU) 444

# Introduction

There are hunting opportunities on more than 85 percent of the land base in Alberta's Parks system. Hunting is permitted in all Wildland Provincial Parks and some Provincial Parks and Provincial Recreation Areas under the *Provincial Parks Act*.

Hunting is a supported activity in Alberta Parks because of its alignment with preserving natural heritage, including traditional land use, providing exceptional recreation opportunities, providing tools for wildlife management, and getting people outside and connecting with nature.

Alberta Parks are enjoyed by a wide range of recreational users year-round and in Provincial Parks and Provincial Recreation Areas, where hunting is allowed, Firearm Discharge Permits are required to address public safety inform hunters of areas where discharge is prohibited because of site specific values and facilities.

Sulphur Gates is designated as a Provincial Recreation Area and is managed by the Parks Operations Division



**Hunter Information Package**  
Sulphur Gates Provincial Recreation Area  
Wildlife Management Unit (WMU) 444



of Alberta Environment and Parks. It is located in North West Alberta adjacent to the Smoky River and to the west of the Town of Grande Cache, with Willmore Wilderness Park bordering the south and Highway 40 to the north. It is located in the upper foothills and is a valuable conservation area providing a space for recreational activities. It is over 26 hectares and includes steep valley walls and erosion resistant bedrock of the Smoky River and provides access to the Willmore Wilderness Park and support to a wide variety of recreational activities.

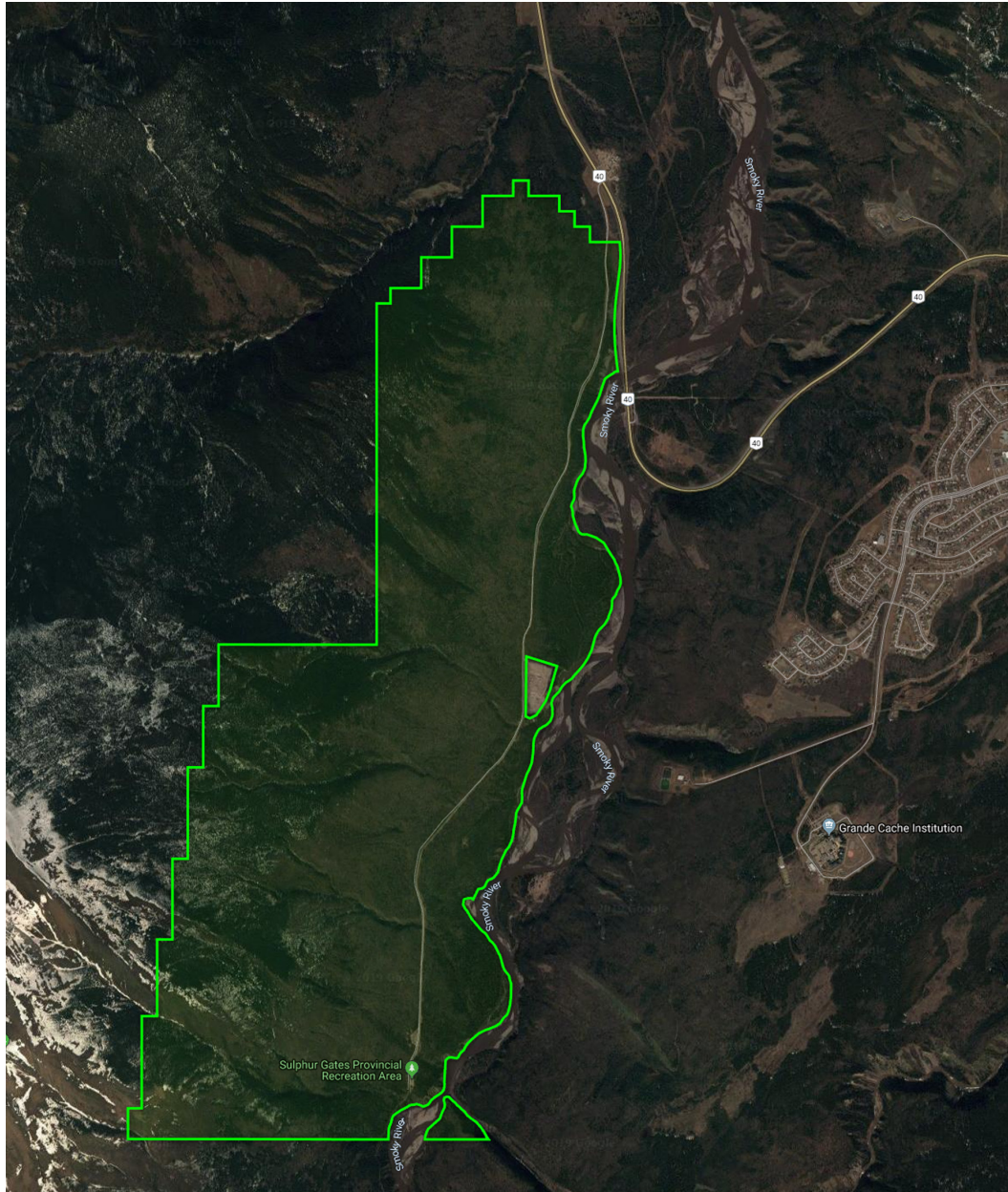
Sulphur Gates Provincial Recreation Area is filled with wildlife representative of the Foothills Natural Regions that it sits in including habitat for Bighorn Sheep, Mountain Goats, Grizzly and Black Bear, Moose, White-tailed and Mule Deer, Elk, and Cougar.

Other users are present at all times of year in Sulphur Gates Provincial Recreation Area. Please be aware of their presence and take appropriate measures to ensure you are being safe and aware at all times.



**Hunter Information Package**  
Sulphur Gates Provincial Recreation Area  
Wildlife Management Unit (WMU) 444

# Sulphur Gates PRA Map



## Access Information

Access into the park is by foot or vehicle and inside the park by a variety of ways of foot power. Off-highway vehicles (OHVs) cannot be used inside the park. Hunters may use pedal bicycles and skis, to travel around the park. Please be aware there may be adverse conditions that may make conditions poor (e.g. muddy or snowed in). All multi use trails are open to hunting. Motorized travel within rivers and creeks is detrimental and prohibited.



### **Hunter Information Package**

Sulphur Gates Provincial Recreation Area  
Wildlife Management Unit (WMU) 444

# Successful Hunter Information



**Hunter Information Package**  
Sulphur Gates Provincial Recreation Area  
Wildlife Management Unit (WMU) 444

## Emergency Preparedness

Be prepared for weather changes including precipitation, unpredictable weather, and fluctuating temperature.

Be equipped with survival gear – matches, flashlight, warm clothes, compass, extra batteries, flagging tape, food, water.

It is advised to carry flagging tape so you can mark your kill site (so you can find it again) and find your path back to your vehicle. Make sure all flagging is removed on your way out.

Be prepared to spend the night outdoors. Unpredictable precipitation, high elevation, and weather can make travel hazardous and you might find yourself unable to travel with or without a vehicle.

Tell a friend or family member where you are going, how to contact you, what time you expect to return, and make

sure they know who to contact if you are late and they are unable to contact you.

Hunters should use caution and be aware that there are many predators in the area including Grizzly and Black Bears, Cougars, and Coyotes. It is advised to carry bear spray on you and have it accessible at all times. Should it be necessary to leave your animal overnight, be sure to leave human scent around the carcass and drag the offal (organs) away from the carcass as these predators/scavengers will typically consume those parts first.



**Hunter Information Package**

Sulphur Gates Provincial Recreation Area  
Wildlife Management Unit (WMU) 444

# Wildlife Management Assistance

Not frequently expected in Sulphur Gates Provincial Recreation Area but if found, please report any ear tags to Conservation Officers upon discovery. Ear tags may be white with black numbers, or orange stating “DO NOT EAT” followed by a phone number. The “do not eat” tag is placed on animals that have been tranquilized; hunters must tag their animal and can still expect to salvage their harvest, but depending on when the animal was tranquilized, the hunter will find out whether the meat is safe to consume (or whether a replacement tag may be issued).

For deer hunters, please refer to [Chronic Wasting Disease – Information for Hunters](#)\* for further information.

For more information on [Indigenous hunting and fishing in Alberta](#)\*\* please refer to the webpage.

Contact the office at 403–893–4357 or 403–893–3833 for further questions or concerns.



## Hunter Information Package

Sulphur Gates Provincial Recreation Area  
Wildlife Management Unit (WMU) 444

\*<https://www.alberta.ca/chronic-wasting-disease-information-for-hunters.aspx>

\*\*<https://www.alberta.ca/indigenous-hunting-and-fishing-in-alberta.aspx>

# Important Park Specific Information for Hunters



**Hunter Information Package**  
Sulphur Gates Provincial Recreation Area  
Wildlife Management Unit (WMU) 444

1. As a reminder, hunters must also abide by federal legislation regarding firearm transport and storage in a vehicle (particularly for times when a firearm is left unattended). The park does require that firearms not in use must be encased.
2. The permit holder shall not discharge a firearm within 183 meters (200 yards) of park facilities including the campground, and staging area. Details are listed in the terms and conditions and located on the map.
3. Please leave any gate as you found it. If a gate is open, please leave it open; if it is closed, please close it behind you.
4. Hunters must salvage their animal in accordance with the provincial Wildlife Regulations and will not receive assistance from park employees.
5. Do not cut any fences to provide easy access to your

harvested animal; this includes any of the interior fences or the fences belonging to surrounding landowners.

6. Be a conscientious neighbour! If you wish to hunt on adjacent private land or you need to access private land in order to salvage your animal on adjacent private land, you must obtain permission from the landowner before doing so to avoid trespassing.
7. Open fires are only permitted in the engineered facilities (such as wood stoves and fire pits with steel rings) that are provided in campgrounds or day use facilities. Campfires are prohibited at times when a fire ban is in place. It's an offence to burn deadfall.
8. Tree stands are permitted only if they are portable, man-made, self-contained (do not build it using natural materials from the park), and do no permanent damage (do not remove/knock down dead or live branches) to the tree(s) and surrounding vegetation. Tree stands must be taken down at

the end of each hunt (every day) to ensure fairness and equal access to hunting locations throughout the season.



**Hunter Information Package**  
Sulphur Gates Provincial Recreation Area  
Wildlife Management Unit (WMU) 444

## Extra Word of Caution

Sulphur Gates Provincial Recreation Area has a campground with 15 campsites and 4 equestrian campsites with corrals. There is also a staging area (and buffer) where hunting is not allowed. Campers, hikers, birders, canoers, equestrian users, and fishers are located within this park, please be aware of where you and others are at all times while hunting.

Please refer to the [Alberta Hunting Regulations](http://www.albertaregulations.ca/huntingregs/) for further information.



### Hunter Information Package

Sulphur Gates Provincial Recreation Area  
Wildlife Management Unit (WMU) 444

\*<http://www.albertaregulations.ca/huntingregs/>

In case of an emergency, call 911. To report concerns to a Conservation Officer, call 780-827-7393 or 780-865-6972. The nearest hospital is located in Grande Cache. Their non-emergency line is 780-827-3701.