

Hunter Information Package

Saskatoon Mountain Provincial Recreation Area

Wildlife Management Unit (WMU) 357

If you have questions or concerns please contact a Conservation Officer or park staff at 780-538-5350. For emergencies please dial 911. To report poaching please call Report-A-Poacher at 1-800-642-3800.

Contents

Introduction	3
Saskatoon Mountain PRA Map	5
Access Information	6
Successful Hunter Information	8
Wildlife Management Assistance	10
Important Park Specific Information for Hunters	11
Extra Word of Caution	15



Hunter Information Package
Saskatoon Mountain Provincial
Recreation Area
Wildlife Management Unit (WMU) 357

Introduction

There are hunting opportunities on more than 85 percent of the land base in Alberta's parks system. Hunting is permitted in all Wildland Provincial Parks and some Provincial Parks and Provincial Recreation Areas.

Hunting is a supported activity in Alberta Parks because of its alignment with preserving natural heritage, including traditional land use, providing exceptional recreation opportunities, providing tools for wildlife management, and getting people outside and connecting with nature.

Alberta Parks are enjoyed by a wide range of recreational users year-round and in Provincial Parks and Provincial Recreation Areas, where hunting is allowed, Firearm Discharge Permits are required to address public safety and wildlife management issues as well as to protect sensitive areas and species.

Saskatoon Mountain is designated as a Provincial Recreation Area and is managed by the Parks Operations Division of Alberta Environment and Parks. It is located



Hunter Information Package
Saskatoon Mountain Provincial
Recreation Area
Wildlife Management Unit (WMU) 357



in Northwestern Alberta near Grande Prairie and is a valuable conservation area providing a space for recreational activities to occur in the appropriate areas.

Saskatoon Mountain Provincial Recreation Area is filled with wildlife representative of the Boreal Forest – Dry Mixedwood Natural Region that it sits in.

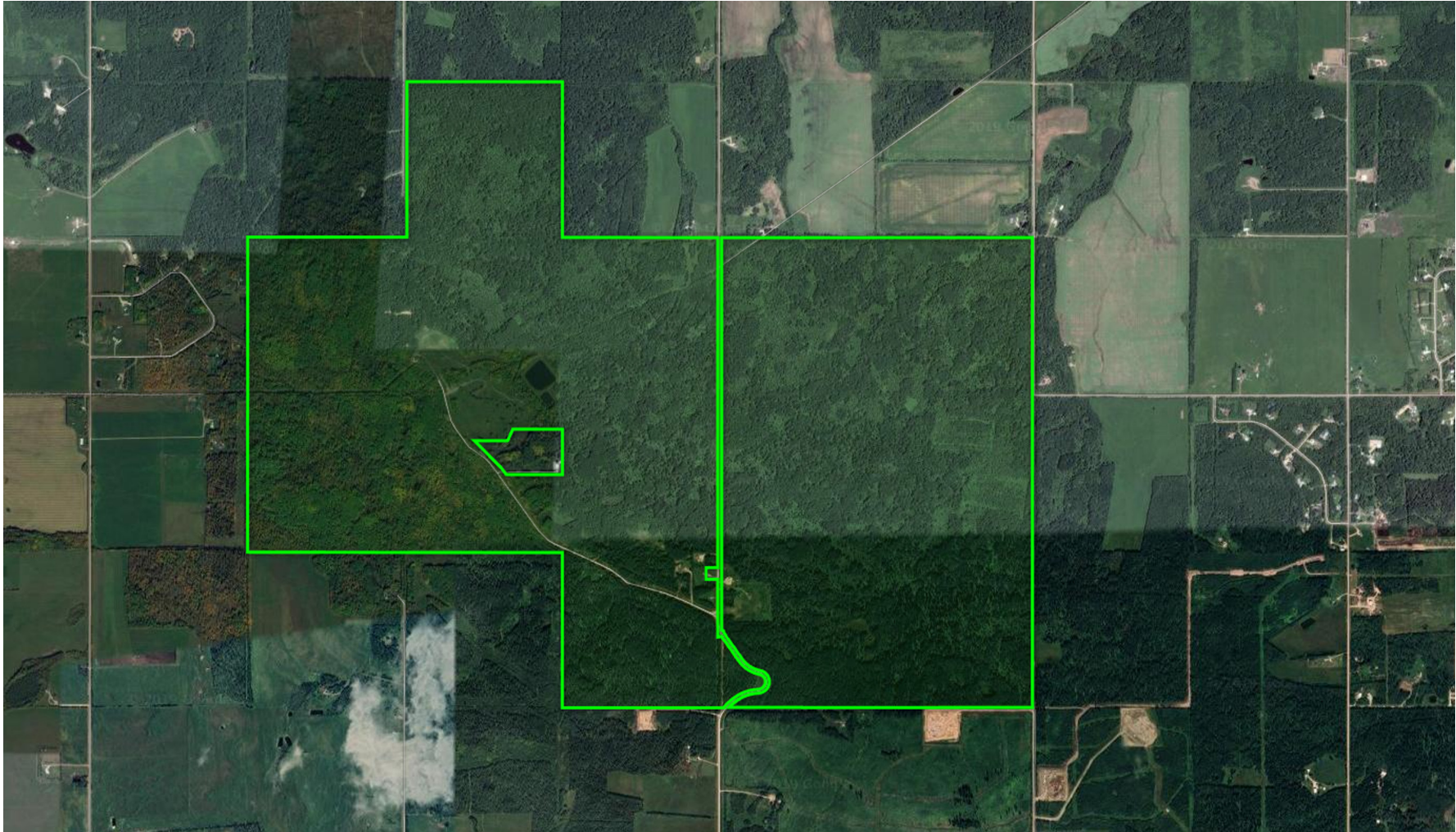
Hikers, bird watchers, cross-country skiers, community groups, other recreationalists, park employees, volunteers and hunters, are present at various times throughout the year at Saskatoon Mountain Provincial Recreation Area. Additionally, many people from the surrounding communities use the area to walk their dogs. Please be aware of their presence and take appropriate measures to ensure you are being safe and aware at all times.



Hunter Information Package
Saskatoon Mountain Provincial
Recreation Area
Wildlife Management Unit (WMU) 357



Saskatoon Mountain PRA Map



Access Information

Access into the park is by a variety of ways including vehicle, off-highway vehicle (OHV), horse or foot power. OHVs can be used inside the park, however usage must comply with all applicable regulations. There are approximately 15 kilometers of trails and bridges.

Hunters may only use an Off Highway Vehicle (OHV) in Saskatoon Mountain Provincial Recreation Area in those areas west of Range Road 92, and must have permission from a Conservation Officer or the Regional Director. The use of OHV's is not permitted on any lands east of Range Road 92, unless the OHV is being used for retrieval of a legally harvested big game animal AND the permit holder has acquired permission directly from a Conservation Officer or the Regional Director.

Hunters may use pedal bicycles, skis, or foot power to travel around the park. Please be aware there may be adverse conditions that may make conditions poor



Hunter Information Package
Saskatoon Mountain Provincial
Recreation Area
Wildlife Management Unit (WMU) 357

(e.g. muddy or snowed in). All multi use trails are open to hunting. Motorized travel within rivers and creeks is detrimental and prohibited.



Hunter Information Package
Saskatoon Mountain Provincial
Recreation Area
Wildlife Management Unit (WMU) 357



Please stay on designated trails and roads.
Do not drive around water holes as it
damages the trail and increases the size of
the disturbances to the land.

Successful Hunter Information

Emergency Preparedness

Be prepared for weather changes including precipitation, unpredictable weather, and fluctuating temperature.

Be equipped with survival gear – matches, flashlight, warm clothes, compass, extra batteries, flagging tape, food, water.

It is advised to carry flagging tape so you can mark your kill site (so you can find it again) and find your path back to your vehicle. Make sure all flagging is removed on your way out.

Be prepared to spend the night outdoors. Unpredictable precipitation and weather create a need for 4x4s in some areas and road conditions are subject to change. Weather can make travel hazardous and you might find yourself unable to travel with or without a vehicle.

Tell a friend or family member where you are going, how



Hunter Information Package
Saskatoon Mountain Provincial
Recreation Area
Wildlife Management Unit (WMU) 357

to contact you, what time you expect to return, and make sure they know who to contact if you are late and they are unable to contact you.

Hunters should use caution and be aware that there are many predators in the area. Should it be necessary to leave your animal overnight, be sure to leave human scent around the carcass and drag the offal (organs) away from the carcass as these predators/scavengers will typically consume those parts first.



Hunter Information Package
Saskatoon Mountain Provincial
Recreation Area
Wildlife Management Unit (WMU) 357

Wildlife Management Assistance

Not frequently expected in Saskatoon Mountain Provincial Recreation Area but if found, please report any ear tags to Conservation Officers upon discovery. Ear tags may be white with black numbers, or orange stating “DO NOT EAT” followed by a phone number. The “do not eat” tag is placed on animals that have been tranquilized; hunters must tag their animal and can still expect to salvage their harvest, but depending on when the animal was tranquilized, the hunter will find out whether the meat is safe to consume (or whether a replacement tag may be issued).

Please refer to [Chronic Wasting Disease – Information for Hunters](#)* for information.

For more information on [Indigenous hunting and fishing in Alberta](#)** please refer to the webpage.

Contact the office at 780–538–5350 for further questions or concerns.



Hunter Information Package
Saskatoon Mountain Provincial
Recreation Area
Wildlife Management Unit (WMU) 357

*<https://www.alberta.ca/chronic-wasting-disease-information-for-hunters.aspx>

**<https://www.alberta.ca/indigenous-hunting-and-fishing-in-alberta.aspx>

Important Park Specific Information for Hunters



Hunter Information Package
Saskatoon Mountain Provincial
Recreation Area
Wildlife Management Unit (WMU) 357

1. As a reminder, hunters must also abide by federal legislation regarding firearm transport and storage in a vehicle (particularly for times when a firearm is left unattended). The park does require that firearms not in use must be encased.
2. Only primitive weapons are authorized in this area of WMU 357. This includes bow and arrow, shotgun, or muzzle loading firearms of 0.44 calibre or greater. When hunting big game during an open season hunters can only use specific types of weapons as referenced in the Wildlife Regulation.
3. When hunting bird game and other non-licence species in the park (which is part of Wildlife Management Unit 357), hunters can use other legal weapons as can be used in the rest of the WMU (e.g. a grouse hunter using a pellet gun).

4. The permit holder shall not discharge a firearm within 183 metres (200 yards) of park facilities. Details are listed in the terms and conditions and located on the map.
5. Hunters must salvage their animal in accordance with the provincial Wildlife Regulations and will not receive assistance from park employees.
6. Do not cut any fences to provide easy access to your harvested animal; this includes any of the interior fences or the fences belonging to surrounding landowners.
7. Be a conscientious neighbour! If you wish to hunt on adjacent private land or you need to access private land in order to salvage your animal on adjacent private land, you must obtain permission from the landowner before doing so to avoid trespassing.
8. Open fires are only permitted in the engineered facilities (such as wood stoves and fire pits with steel rings) that are provided in the picnic area that is



Hunter Information Package
Saskatoon Mountain Provincial
Recreation Area
Wildlife Management Unit (WMU) 357

operated by the County of Grande Prairie. Campfires are prohibited at times when a fire ban is in place. It's an offence to burn deadfall.



Hunter Information Package
Saskatoon Mountain Provincial
Recreation Area
Wildlife Management Unit (WMU) 357

9. Tree stands are permitted between July 25th and January 31st annually in Saskatoon Mountain. They are only permitted if they are portable, man-made, self-contained (do not build it using natural materials from the park), and do no permanent damage (do not remove/knock down dead or live branches) to the tree(s) and surrounding vegetation. Tree stands must be taken down at the end of each hunt (every day) to ensure fairness and equal access to hunting locations throughout the season.
10. Hunters may only use an Off Highway Vehicle (OHV) in Saskatoon Mountain Provincial Recreation Area in those areas west of Range Road 92 and must have permission from a Conservation Officer or the Regional Director. The use of OHV's is not permitted on any lands east of Range Road 92, unless the OHV

is being used for retrieval of a legally harvested big game animal AND the permit holder has acquired permission directly from a Conservation Officer or the Regional Director.



Hunter Information Package
Saskatoon Mountain Provincial
Recreation Area
Wildlife Management Unit (WMU) 357

Extra Word of Caution

Saskatoon Mountain Provincial Recreation Area is part of WMU 357. Please contact [Alberta Fish and Wildlife](#)* for more information.

Saskatoon Mountain Provincial Recreation Area is close to the town of Grande Prairie as well as Saskatoon Island Provincial Park, please always be aware of your location. Additionally, municipal bylaws for lands surrounding Saskatoon Mountain may have different rules related to hunting. Please ensure you understand and abide by all rules for the land you are using.

In case of an emergency, call 911. To report concerns to a Conservation Officer, call 780-538-5350. The nearest hospital is located in Grande Prairie. The non-emergency line for the hospital is 780-538-7100.



Hunter Information Package
Saskatoon Mountain Provincial
Recreation Area
Wildlife Management Unit (WMU) 357

*<http://www.albertaregulations.ca/huntingregs/>