

# Bob Creek Wildland Provincial Park Black Creek Heritage Rangeland

Backcountry Guide



Welcome to Bob Creek Wildland and Black Creek Heritage Rangeland. Please be respectful of the grassland, wildlife, cattle and other users.

Located in SW Alberta, between the Livingstone Range of the Rocky Mountain Front, the Oldman River and Highway 22, these protected wildlands surround one of Alberta's unique ecological areas known as "The Whaleback". Together the Wildland and the Rangeland protect the largest intact tract of montane landscape in Alberta which is comprised of unique features that support elk herds, grizzly bears and wolves, species at risk while also maintaining historic uses of the land.

The area is underlain by folded and faulted sedimentary rock, and ridges follow major fault lines. The modern topography is the result of several glaciations and erosion of this underlying rock. As a result of the geography combined with the unique weather patterns of SW Alberta the landscape is now characterized by rolling fescue grasslands, steep grass and forested ridges with many springs and small creeks along the valley bottoms.

## Cycling

Please show respect to the natural environment in the following ways:

- When coming up behind other trail users and when approaching blind corners, use your bell to warn others of your presence. Stay alert! You could startle bears or other wildlife if you move too quietly along trails.
- When approaching horses, say hello to the rider to let the horse know that you are human. Move your bike off the trail and keep it between you and the horse. This will facilitate passing and will put you in a safer position as the horse is passing. Follow the instructions of the rider.
- Please stay on trails when mountain biking.
- Remember, you are traveling fast and you can surprise wildlife. Be extra cautious when riding your mountain bike.
- Bring extra clothing and safety supplies when biking. Bob Creek Wildland is a remote location and the weather can change quickly.

## Fishing

World-class fishing is possible from Maycroft Provincial Recreation Area just outside the wildland. Park in designated day use parking and carefully access the Oldman River. Be extremely cautious of high water and cliffs when navigating to the edge of the river.

Please follow the fishing regulations from the sport fishing guide, available wherever you purchased your fishing license.

## Caution to Trail Users

The designated OHV (Off Highway Vehicle) trails in Bob Creek Wildland should be considered rustic or unimproved and may present obstacles and challenges to users due to weather related conditions, blow downs, etc. The trails also have steep sections where caution must be exercised. It is recommended that users travel in groups.

## Practice "No-Trace" Camping

- Hikers, hunters and equestrians are welcome to pack in, set up and take down camps.
- Backcountry camping is permitted in Bob Creek Wildland.
- Backcountry camping is not permitted in the Heritage Rangeland at any time.
- Camping is not permitted within the confines of the Staging Area.
- If you pack it in, pack it out! Please help us out by packing out any garbage that you may come across.
- Wash and relieve yourself at a minimum of 50 meters (150 feet) from any water source.
- Bury human waste and toilet paper.
- If you use wood burning camp stoves in the wildland, ensure spark arresters are on the chimney.
- No open fires are allowed in Black Creek Heritage Rangeland.
- The maximum stay for a camp is 16 days. All camps must be completely removed at the end of your stay. Any abandoned items will be removed and disposed of by conservation officers.



## Hunting

Hunting is permitted in Bob Creek Wildland and Black Creek Heritage Rangeland subject to wildlife regulations pertinent to the wildlife management the protected areas are in. These are WMU 308, 402 and a small portion of 306. **It is the responsibility of the hunter to know the regulations for each WMU. Currently trails for recreational OHV use west and north of trail marker 7 are closed until further notice.**

## Off-Highway Vehicles (OHVs)

**OHV use (snowmobiles and quads only) is permitted on designated trails only but not on trails west and north of trail marker 7. Off trail use is prohibited.**

Be responsible when using your quad or snowmobile by complying with the following:

- OHV Operators will be required to produce valid registration and insurance.

## Respect the Rights of Others

- All users should respect each other.
- Obtain permission from all leaseholders or landowners prior to accessing or crossing any lands other than the heritage rangeland. Access to the Heritage Rangeland can be restricted by the leaseholder of the area for management purposes.
- Leave gates as you find them.
- Wildlife and livestock need space, quiet and time to feed. Respect these needs.
- Please report vandalism or other illegal behavior to conservation officers 1-844-HELP-PRK or 1-844-435-7775.



- Only snowmobiles and quad motorized vehicles are permitted on designated trails in Bob Creek Wildland.
- You can use a snowmobile and quad to access a camping area within 100 meters of designated trails, so long as there is an established trail to it.
- A quad has been defined as a four-wheeled, (but also includes three -wheeled) vehicle that:
  - has low ground-pressure tires, (10psi or less)
  - has a vehicle weight not exceeding 386 kilograms
  - has no tracks
  - has a wheel base of 1.55 meters or less, and width of 1.22 metres or less
  - is steered by changing the horizontal alignment of front wheels
  - must be equipped with functional headlights, tail-lights and spark arrestor
- Quads and snowmobiles must meet current provincial regulation standards. These OHV standards exist to ensure rider safety and to minimize environmental impacts.
- Stay on designated trails at all times (designated trails are shown on the map).
- Designated trails are available for use from May 1 – December 20.
- Do not drink and drive.
- Use of low-pressure tires is mandatory to reduce impacts (e.g. scarring).
- Avoid spinning quad tires in mud or on soft trails.
- Be aware of the potential negative effects of recreational OHV use (wildlife disruption, soil and water contamination, loss of vegetation cover, soil erosion and noise).
- Obey all lawfully posted signs.
- For more information about recreational access on leased lands visit [mywildalberta.com](http://mywildalberta.com).

## Equestrian Users

Enjoy your ride and please show respect to the natural environment in the following ways:

- Please only park your horse trailer in designated parking location and never block cattle guards, other vehicles, loading ramps or roadways.
- Please use cubes, pellets or certified weed-free hay. Make sure your horse finishes their feed so that none is left behind.
- Do not clean your horse trailer out in the parking lot.
- When accessing water, use hard ground surfaces and avoid soft ground conditions to prevent steam bank erosion and possible bogging of your horse. Be extremely careful around springs, wetlands and small muddy stream crossings. These can potentially be very dangerous to cross.
- Do not tie or highline your horses to evergreen trees or cottonwoods or near creeks or springs. Aspen are a tree species that is taking over the fescue grassland and are more suitable for tying your horses.
- Bring extra clothing and safety supplies, Bob Creek Wildland is a remote location and the weather can change quickly.

## Minimize Your Impact

- Be aware of your effect on the environment and act responsibly.
- Familiarize yourself with regulations in effect in the areas you are using. Choose lightweight equipment that is durable and safe.
- Check weather conditions before you go.
- Be aware of the potential negative effects of recreational use (wildlife disruption, soil and water contamination, loss of vegetation cover, soil erosion, noise).
- When in the backcountry, garbage must be packed out, never buried or burned. Wildlife that find and dig up garbage become accustomed to human food and become problem wildlife. Feeding wildlife creates similar problems.

## Safety in the Backcountry

- Know the basics of navigation, first aid and traceless camping.
- Know your route and the area; obtain proper maps and keep track of where you are at all times by map and compass, GPS, or both.
- Carry extra batteries and have a compass available in case the GPS fails. Consider a personal SPOT GPS device for emergency communications.

## Contact

### Alberta Parks Information

Phone: (403) 627-1165

### General Provincial Park Information

Web: [albertaparks.ca](http://albertaparks.ca)

Toll Free: 1-866-427-3582

### Conservation Officer and Public Safety

Toll Free: 1-844-HELP-PRK (435-7775)

### Fire Bans in Alberta

[albertafirebans.ca](http://albertafirebans.ca)

### Report a Forest Fire

Toll Free: 310-FIRE (3473)

### Report-A-Poacher and Public Lands Complaints

Phone: 1-800-642-3800

### Emergency (Fire, Police, Ambulance)

Phone: 911

## Recommended Resources

### Alberta Guide to Sport Fishing Regulations

Published annually, available where you purchase fishing permits and online at [www.srd.alberta.ca](http://www.srd.alberta.ca)

### Alberta Guide to Hunting Regulations

Published annually, available where you pick up hunting permits and online at [www.srd.alberta.ca](http://www.srd.alberta.ca)

**Parks Brochures** online at [albertaparks.ca](http://albertaparks.ca):

- Bear Smart
- Living With Cougars
- Regulations brochure
- Research & Collection Permits
- Filming & Photography in Alberta Parks

Updated September 2019

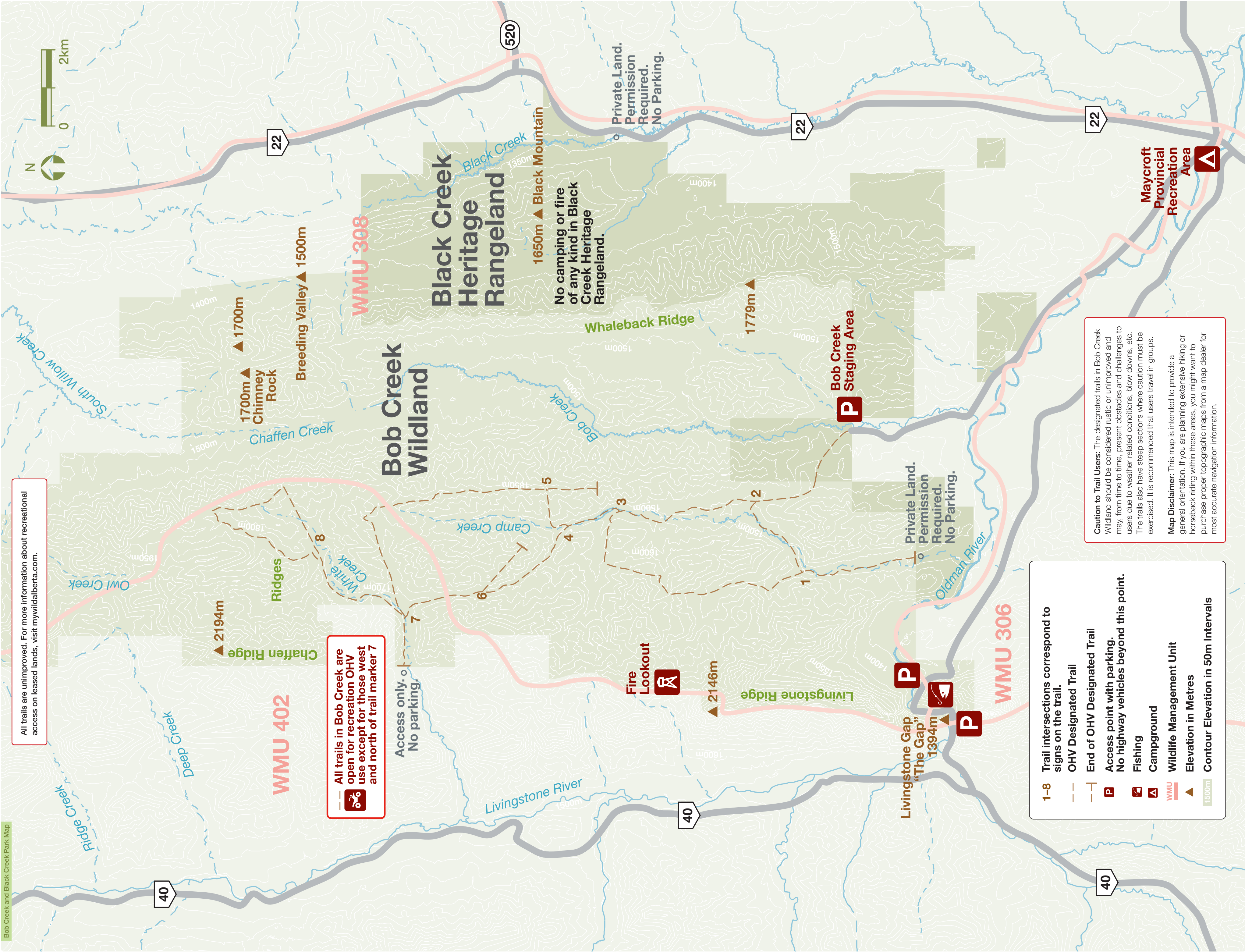
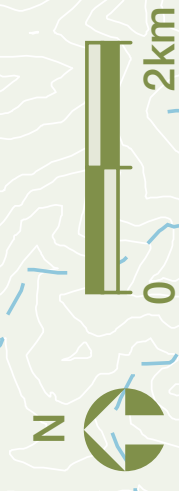
## Hiking

When hiking, keep your groups under 10 and be respectful of the grassland, wildlife, cattle and other users. The following guidelines will help you enjoy your hike.

- Avoid low wet areas; when this is not possible, take care to minimize your disturbance of vegetation.
- Bob Creek Wildland and Black Creek Heritage Rangeland is a wilderness area and all visitors must be prepared for backcountry hiking. Ensure you have enough gear and safety equipment should you need it due to changing weather conditions and enough experience to safely travel in the area.
- Keep litter in your pockets or bring along a bag to put it in.
- Please be considerate of neighbouring private land, seek permission well ahead of time if you are hoping to cross it.
- The best way to access Bob Creek Wildland and Black Creek Heritage Rangeland is from the south end.
- Never park your vehicle so it blocks access to a cattle guard, loading ramps, other vehicles or roadways.
- When hiking ridge tops, please keep your group size to a maximum of 10 individuals.



All trails are unimproved. For more information about recreational access on leased lands, visit [mywildalberta.com](http://mywildalberta.com).



**WMU 402**

All trails in Bob Creek are open for recreation OHV use except for those west and north of trail marker 7

Access only. No parking.

**WMU 308**

**Black Creek Heritage Rangeland**

1650m ▲ Black Mountain  
No camping or fire of any kind in Black Creek Heritage Rangeland.

Private Land. Permission Required. No Parking.

**WMU 306**

- 1-8 Trail intersections correspond to signs on the trail.
- OHV Designated Trail
- End of OHV Designated Trail
- Access point with parking. No highway vehicles beyond this point.
- Fishing
- Campground
- Wildlife Management Unit
- Elevation in Metres
- Contour Elevation in 50m Intervals

**Caution to Trail Users:** The designated trails in Bob Creek Wildland should be considered rustic or unimproved and may, from time to time, present obstacles and challenges to users due to weather related conditions, blow downs, etc. The trails also have steep sections where caution must be exercised. It is recommended that users travel in groups.

**Map Disclaimer:** This map is intended to provide a general orientation. If you are planning extensive hiking or horseback riding within these areas, you might want to purchase proper topographic maps from a map dealer for most accurate navigation information.

**Maycroft Provincial Recreation Area**