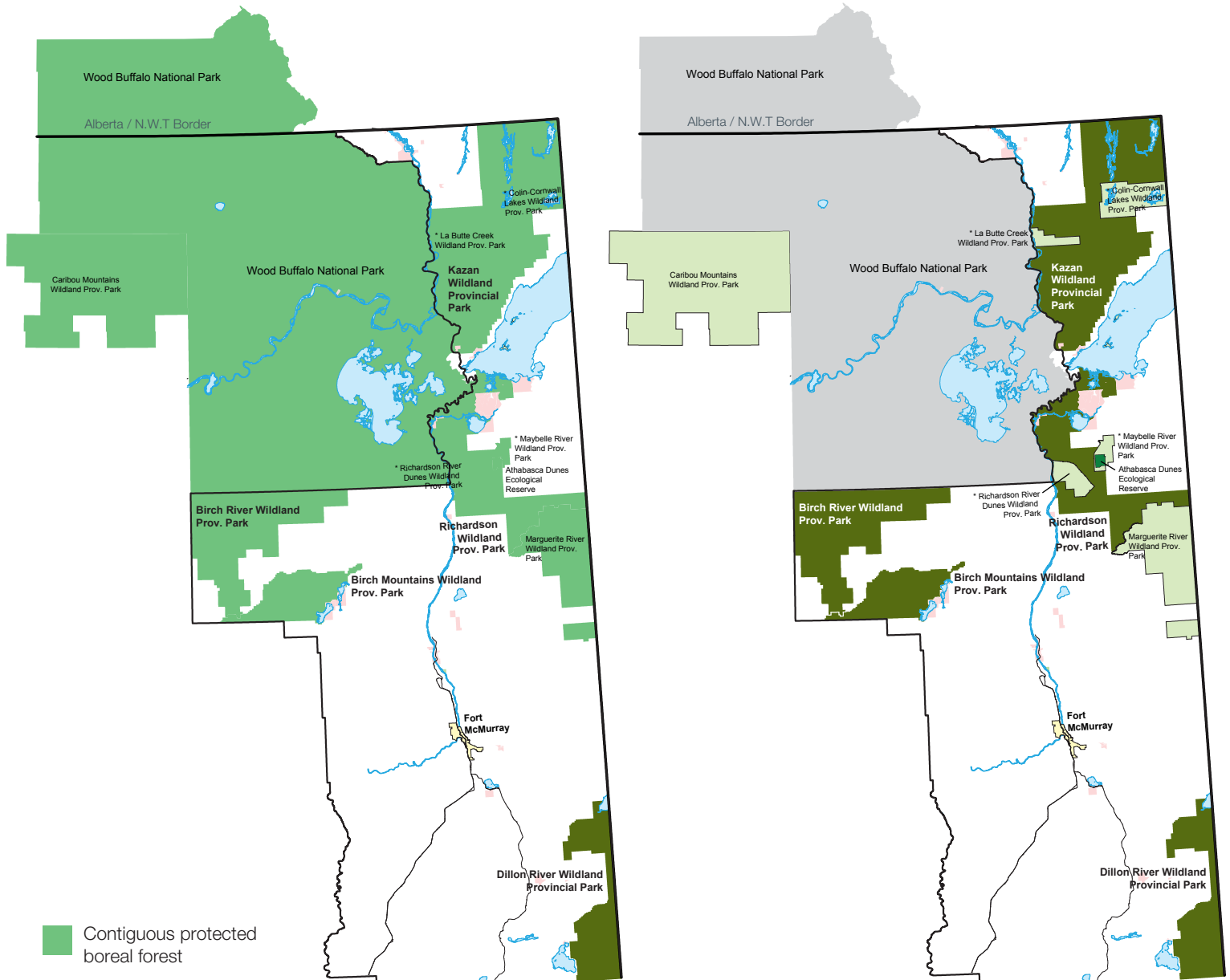


# World's Largest Boreal Protected Forest

The designation of four wildland provincial parks and the expansion of another will add more than 1.36 million hectares of new conserved land for future generations of Albertans.

The additional land and its proximity to Wood Buffalo National Park will create the largest contiguous boreal protected area in the world, and conserve vital habitat that is home to several species of conservation concern, including three federally designated species at risk.



Contiguous protected boreal forest

Kazan Wildland Provincial Park:  
Total final consolidated site area: 659,397 ha

Richardson Wildland Provincial:  
Total final consolidated site area: 312,068 ha

Dillon River Wildland Provincial Park (new park):  
Newly established area: 191,545 ha

Birch River Wildland Provincial Park (new park):  
Newly established area: 331,832 ha

Birch Mountains Wildland Provincial Park (expansion):  
Total final consolidated site area: 145,969 ha

\* consolidated wildland provincial parks