

Wildcrafted Colour: Dyeing with Invasive Plants

Immerse yourself in the wild beauty of Lesser Slave Lake Provincial Park during this learning experience for beginner dyers. Textile artist Megan Samms will lead you through the process of preparing and dyeing natural fibres using invasive plants harvested from the boreal forest within the park.

Participant Information

This workshop vacation includes:

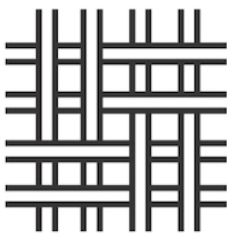
- Instruction and hands-on experience in all aspects of dyeing with plants;
- Small samples of 100% wool yarn and 100% organic cotton fabric for you to dye and take home with you as references for your future dyeing efforts; and
- Lunches – locally sourced ingredients prepared by Slave Lake's The Fix Coffee Bar & Bakery.



Yarns and fabrics dyed by Megan Samms.

You will need to find your own accommodations; there are hotels in the town of Slave Lake, private campgrounds outside the park, and provincial park campgrounds inside the park. See Appendix A for details.

About Megan Samms



[Megan Samms](#) lives in the boreal forest of British Columbia during the winter and protects the boreal forest of Alberta during the summer when she works as a fire tower lookout person in the Slave Lake Forest. She grows dye plants in her garden and sustainably harvests others from the forest around her. She is committed to using 100% natural fibres, organic whenever possible. She weaves her hand-dyed fibres into beautiful textiles

and was the Artist In Residence at Custom Woolen Mills in Carstairs, Alberta in fall 2017. She is the Vice President and Northern Representative of the [Guild of Canadian Weavers](#) and an active contributor to their newsletter, The Bulletin.

About Lesser Slave Lake Provincial Park

Located on the northeastern shore of Lesser Slave Lake, Lesser Slave Lake Provincial Park (LSLPP) protects an unusual sand dune and wetland complex as well as representative examples of the boreal forest and foothills natural regions. Trails, campgrounds, lakes and 7 km of natural sand beach provide a variety of recreational opportunities to visitors, including hiking, birdwatching, mountain biking, swimming, sunbathing, fishing, paddling, kitesurfing, and, of course, camping.



A Lesser Slave Lake Provincial Park sunset.



A chestnut-sided warbler banded at the LSLBO.

Special mention must be made of the [Lesser Slave Lake Bird Observatory](#) (LSLBO), a hub for monitoring bird migration within LSLPP. This facility is operated by a non-profit organization and is part of the Canadian Migration Monitoring Network. Since the LSLBO was established in 1993, they have recorded over 250 species of birds within LSLPP and banded nearly 75,000 birds. Migration data collected by the LSLBO contributes to our understanding of migration routes, bird lifespans, and bird population trends.

The Boreal Centre for Bird Conservation

The Boreal Centre for Bird Conservation (BCBC) is a unique research and education facility operated as a partnership between the LSLBO and Alberta Parks. Interactive displays provide an in-depth look at the world of birds and their vital relationship with the boreal forest, while our dynamic staff are happy to answer any questions you may have about the centre, the boreal forest, or its wildlife.

The real stars of the BCBC are the neo-tropical migrant birds that pass through the area and fill their boreal forest breeding grounds with song and the elusive flash of coloured feathers all summer long. These tiny travellers are the BCBC's *raison d'être*, and the focal point for its research, monitoring, and educational programs.

What to Bring

To maximize your enjoyment of the **Wildcrafted Colour: Dyeing with Invasive Plants** workshop, please bring the following:

- Insect repellent and sunscreen
- Clothing for a variety of weather conditions as a good portion of the workshop will be taking place outdoors. Please ensure that you bring:
 - Rain gear including boots
 - Comfortable footwear for walking
 - Warm layers as well as summer clothes, including swimwear. Slave Lake is great for swimming after the workshop finishes each day.
 - Hat and sunglasses
 - Some old clothes that you don't mind getting stained with dye
- A refillable water bottle.
- A notebook and pen – this is where you can keep your notes on the processes Megan will be teaching you, as well as your dyed wool and cotton samples.
- **Optional:** Lunches and refreshment breaks will be provided but you might wish to bring some of your favourite snack foods.
- **Optional:** Camera
- **Optional:** Binoculars in case there's some great wildlife viewing opportunities



Wool skeins dyed by Megan Samms.

Schedule

Saturday, August 4, 2018

Time	Location	Activity
9:00 am – 10:00 am	BCBC entry foyer	Registration, explore the BCBC
10:00 am – 10:15 am	BCBC lawn	Icebreaker
10:15 am – 10:30 am	BCBC lawn	Refreshment break
10:30 am – 10:45 am	BCBC lab	Introduction to the workshop and orientation to the site
10:45 am – 12:00 pm	BCBC lab	History and uses of natural dyes
12:00 pm – 1:00 pm	BCBC lawn	Lunch catered by The Fix
1:00 pm – 2:30 pm	BCBC lab and lawn	Introduction to dyeing – necessary tools, chemicals, tips and tricks and where to purchase supplies
2:30 pm – 3:00 pm	BCBC lawn	Refreshment break
3:00 pm – 4:30 pm	BCBC lab and lawn	Scouring and mordanting fibre

Sunday, August 5, 2018

Time	Location	Activity
9 am – 11:00 am	Trails around the BCBC	Dye and food plants of the boreal forest – identification in the wild
10:30 am – 11:00 am	BCBC lawn	Refreshment Break
11:00 am – 12:00 pm	Around the BCBC	Invasive weed identification and harvesting invasive weeds to make dyes
12:00 pm – 1:00 pm	BCBC lawn	Lunch catered by The Fix
1:00 pm – 2:30 pm	Around the BCBC	Harvesting invasive weeds to make dyes
2:30 pm – 3:00 pm	BCBC lawn	Refreshment Break
3:00 pm – 4:30 pm	BCBC lab and lawn	Preparation of dyes – cleaning and garbling plants harvested, boiling them in the pots

Monday, August 6, 2018

Time	Location	Activity
9:00 am – 10:30 am	BCBC lab and lawn	Colour shifting, using modifiers, post-mordanting
10:30 am – 11:00 am	BCBC lawn	Refreshment Break
11:00 am – 12:00 pm	BCBC lab and lawn	Dye time!
12:00 pm – 1:00 pm	BCBC lawn	Lunch catered by The Fix
1:00 pm – 2:30 pm	BCBC lab and lawn	More dye time!
2:30 pm – 3:00 pm	BCBC lawn	Refreshment Break
3:00 pm – 4:00 pm	BCBC lab and lawn	Even more dye time!
4:00 pm – 4:15 pm	BCBC lawn	Group photo with dyed goods
4:15pm – 4:30 pm	BCBC lab or lawn	Good byes

APPENDIX A

Local Accommodations

This is not an exhaustive list.

Cabins

Name	Reservations	More information
Norm's Walleye Camp & RV Park	780-849-5204	https://www.albertacampgroundguide.ca/campgrounds/norms-walleye-camp-and-r-v-park/
North Shore Homestead	780-849-2174 or ree_nsh@telusplanet.net	https://www.northshorehomestead.com/

Motels and Hotels

Name	Reservations	More information
Big Lake Inn	Online or 780-849-6668	http://www.biglakeinn.com/
Holiday Inn Express & Suites Slave Lake	Online	http://www.ihg.com/ or 780-849-4819
Hotel Northern Star (Formerly the Travelodge)	Various online options	780-849-3300
Lakeview Inns & Suites – Slave Lake	Online or 1-877-355-3500	https://www.lakeviewhotels.com/slave-lake/
Slave Lake Inn & Conference Centre	Online or 1-855-843-4101 or reservations@slavelakeinn.ca	http://slavelakeinn.ca/
Super 8 by Wyndham Slave Lake	Online or 780-640-5971	https://www.wyndhamhotels.com/super-8/

Campgrounds

Name	Reservations	More information
Big Fish Bay RV Resort	https://bigfishbay.com/reserve-online/ or 780-849-2020 or office@bigfishbay.com	https://bigfishbay.com/
Lakeview Campground and Marina	780-849-1003	https://www.slavelakeregion.ca/directory/lakeview-campground-marina/
Lesser Slave Lake Provincial Park - Marten River Campground	www.Reserve.AlbertaParks.ca or 1-877-537-2757	https://www.albertaparks.ca/parks/northwest/lesser-slave-lake-pp/information-facilities/camping/marten-river/
Lesser Slave Lake Provincial Park - Devonshire RV Campground	n/a – self registration kiosk	https://www.albertaparks.ca/parks/northwest/lesser-slave-lake-pp/information-facilities/camping/devonshire-short-stay/
Norm's Walleye Camp & RV Park	780-849-5204	https://www.albertacampgroundguide.ca/campgrounds/norms-walleye-camp-and-r-v-park/
Roland on the River	780-849-5020	https://www.slavelakeregion.ca/directory/roland-on-the-river/
Sak Ata Wahk RV Park and Campground	780-849-1718 or registration@sakatawahk-rvpark-campground.com	http://www.sakatawahk-rvpark-campground.com/

APPENDIX B

Local Attractions

If you're looking for something to do in the evenings, or would like to extend your stay in the area to explore a little, here's a few highlights of things to do in the area.

Craft Beer Tasting

- [Dog Island Brewing](#)

Dining

- Lots of great restaurants in town!

Golf

- [Gilwood Golf Course](#)

Outdoor adventures

- [Lesser Slave Lake Provincial Park](#)
 - [Boreal Centre for Bird Conservation](#)
 - [Devonshire Beach](#)
 - [Hiking and mountain biking trails](#)
 - [Summer Interpretation Programs](#)
- [Lesser Slave Lake Bird Observatory](#)
- [Mike's Kayak Shak](#) kayak, canoe, and paddleboard rentals
- Boat Rentals
 - [Norm's Walleye Camp](#)
 - [Roland on the River](#)
- Fishing

Shopping

- The Town of Slave Lake has many locally owned businesses with beautiful, interesting and sometimes quirky clothing, home décor, and gifts.
- Local artists and artisans sell their original works and handmade products at the Slave Lake Region Visitor Information Centre, The Flipside, and the gift shop at the Boreal Centre for Bird Conservation.