

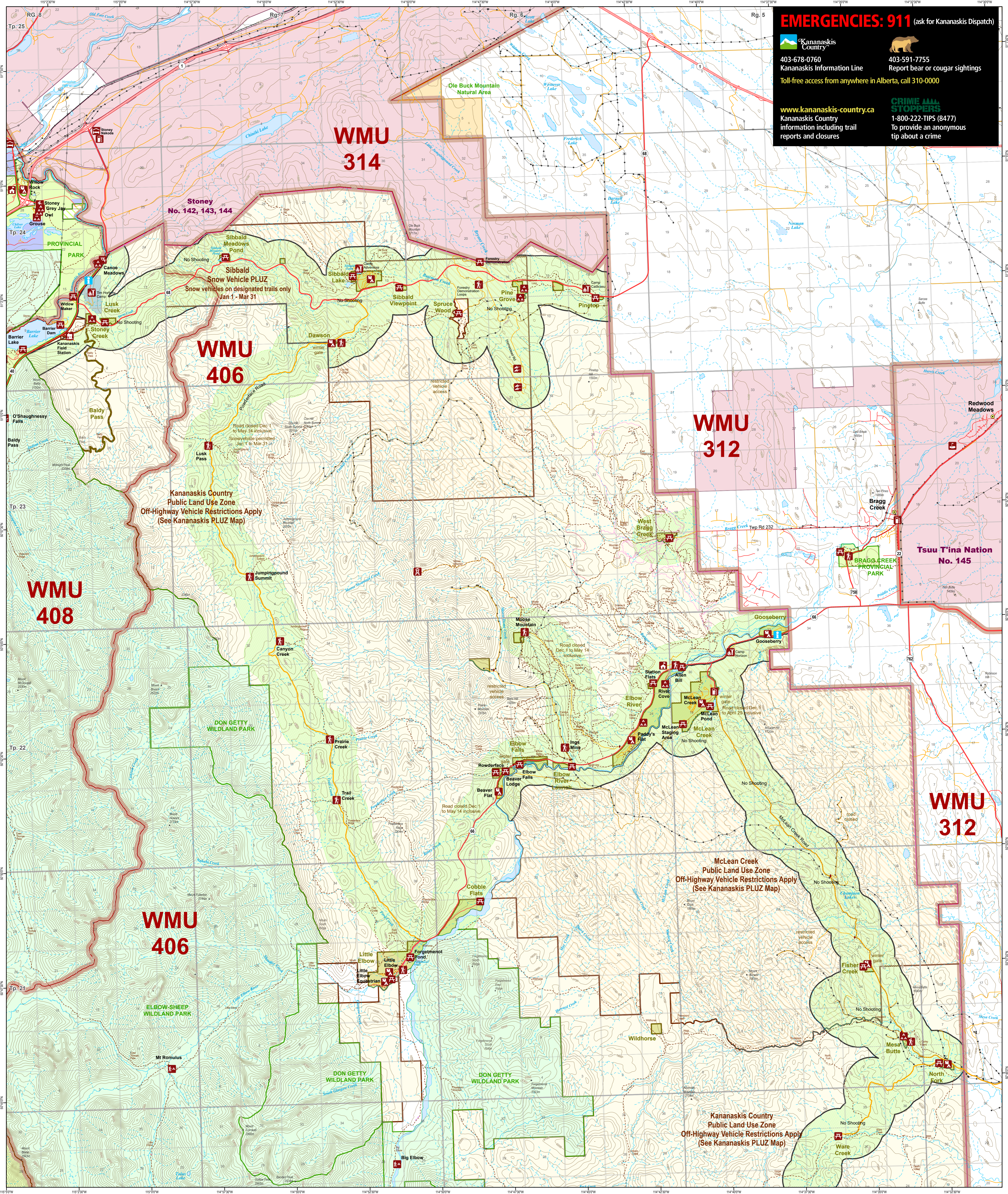
EMERGENCIES: 911 (ask for Kananaskis Dispatch)

Kananaskis Country
 403-673-0760
 Kananaskis Information Line
 Toll-free access from anywhere in Alberta, call 310-0000

403-591-7755
 Report bear or cougar sightings

www.kananaskis-country.ca
 Kananaskis Country information including trail reports and closures

CRIME STOPPERS
 1-800-222-TIPS (8477)
 To provide an anonymous tip about a crime



**SIBBALD & ELBOW
 NORTHEAST KANANASKIS COUNTRY**

LEGEND

- | | | | | | | | | | |
|----------------------------|--------------------------------|------------------|----------------------------|----------------------|------------------------------|---------------------|-------------------------------|-----------|---------------------|
| PROTECTED AREAS | Wildlife management unit (WMU) | No shooting zone | Visitor information centre | Children's camp | CAMPING | TRAILS | ROADS | Gate | River / stream |
| Provincial Park | Kananaskis Country | Hamlet | Park office | Hotel, lodge, resort | Tent or trailer | Trail | Highway - divided | Rail | Stream (indefinite) |
| Wildland Provincial Park | Public land use zone (PLUZ) | | Trailhead | Shooting range | Group | Trail - winter only | Paved 2-4 lane | Pipeline | Waterbody |
| Provincial Natural Area | PLUZ Off Highway Vehicle Zone | | Day use | Boat launch | Backcountry | | Local paved | Powerline | Glacier |
| Provincial Recreation Area | Lease | | Fire lookout | Small craft launch | Random camping not permitted | | Unpaved 2 lane | | Contour - 50 metre |
| Protected area (SSRP) | Other Crown Land | | Fuel | Rafting | | | Local unpaved | | Township line |
| | Private land | | Research centre | | | | Forestry or resource road | | Section line |
| | First Nations | | Golf course | | | | All terrain vehicle (ATV/OHV) | | |

