

LEPIDOPTERA OF DRY ISLAND BUFFALO JUMP PROVINCIAL PARK, 1999-2006

Charles Durham Bird, 24 April 2007
Box 22, Erskine, AB, T0C 1G0
cdbird@xplornet.com

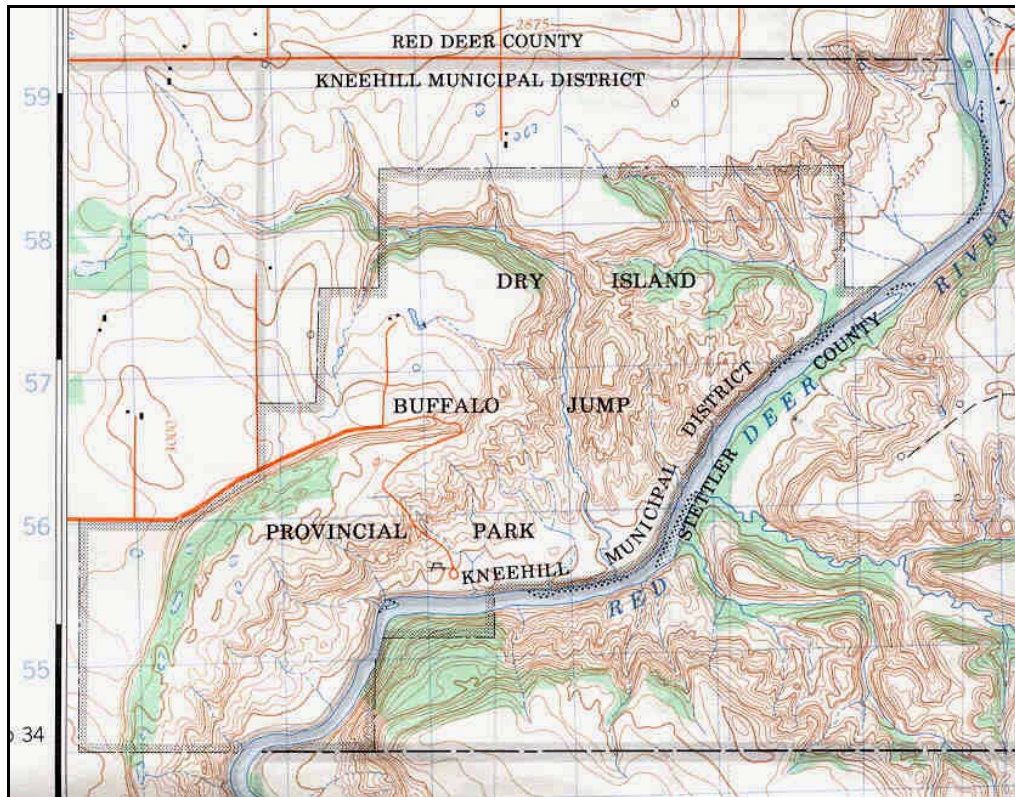
THE AREA



Dry Island Buffalo Jump Provincial Park looking east from the escarpment on July 8, 2001.

Dry Island Buffalo Jump Provincial Park, established in 1970, is located on the Red Deer River, 25 km northeast of Trochu. It is 15 km east of Highway 21. The area is so-named because of a flat-topped mesa, or “dry island” which rises some 200 metres above the river. On the west side of the Park, there is a precipitous cliff over which buffalo were stampeded by Indians. Ecologically, the Park is made up of badland terrain, grassy flats, shrub (saskatoon, chokecherry, silver willow, buckbrush) thickets, deciduous (aspens) woodland and riverine (balsam poplar) forest.

An ecological survey of the Park by Kondla & Smith (1972) came up with an impressive 148 species of birds, 25 of mammals, and 225 of flowering plants. Later studies by Wallis (1977), Nordstrom and Wilkinson (1980), Campbell (1983) and Lohr (1993) have added to these totals. The present report incorporates all information in the earlier reports (Bird 2002, 2003, 2004, 2005) as well as making a few corrections and adding new information based on studies carried out in 2005.



Dry Island Buffalo Jump Provincial Park

BACKGROUND

Provincial Parks and other areas where natural vegetation is protected are of great value as the flora and fauna present in them is typical of what was in Alberta before widespread agricultural activities replaced them with flora and fauna that was much reduced in numbers and made up of species that were associated with cultivated grains and hay crops. As a result, many of Alberta “rare and endangered” species are now found only in, or mainly in, such protected areas.

The present author, a member of the Alberta Lepidopterist’s Guild, the purpose of which is to encourage study of Alberta’s moths and butterflies, is retired and living in Erskine, Alberta. He has long been interested in the natural flora and fauna of the province. In the spring of 2000, he commenced an examination of the moths of south-central Alberta, the purpose of which was to document the species present in various natural areas. He has led North American Butterfly Association (NABA) counts at Dry Island on 2 Jul 1999, 11 Jul 2000, 8 Jul 2001, 7 Jul 2002 and 6 Jul 2003. The Park was visited five times during 2001: June 8, June 20, July 8, August 8 and September 1. On the first two and the last two visits, ultraviolet light traps were run overnight in badland terrain. On the last two visits, moths were collected at a mercury vapor light and sheet set up in riverine forest. Research was carried out five times in the Park in 2002: June 4, June 27, July 7, August 21 and September 10. The coordinates that cover the studied sites are 51.93, 112.97. The results of studies made in 2001, 2002 and 2003 are in Bird (2002, 2003 and 2004). In 2003, light traps were set up in the same location on May 21 and July 12. On June 25, 2003, traps were set up in Section 26, a separate part of the Park, located

about two miles south of the main Park area (51.86, 113/01) and mainly on the escarpment on the east side of the Red Deer River valley. The area was studied 7 times in 2004: May 30, June 19, July 11 and 18, August 15 and 28, and September 24. In 2005: the area was studied 5 times: April 24, June 21, July 10, August 2 and 28.



Looking ESE from the escarpment north of the “Dry Island”, June 19, 2004.

SPECIES RANKINGS

Due to a lack of sufficient information, rankings of the moths of Alberta have been difficult to make. For this reason, it is important that baseline studies, such as the present, be carried out. The provincial butterflies have, on the other hand, been ranked and it is of interest that *Icaricia shasta* and *I. acmon* have been found in the Park.

SPECIMEN DISPOSITION

All specimens collected by the writer presently reside in his collection but they will eventually be donated to the Strickland Museum at the University of Alberta and, possibly also to the Northern Forest Research Centre in Edmonton and the Canadian National Collection in Ottawa. Unless otherwise indicated, specimens collected by Ernest Mengersen reside in the collection at Olds College.

CHECKLIST

The order and terminology, is that of R.W. Hodges (1983) except where recent changes in taxonomy have occurred. While most of the larger or macromoths are relatively well known, the same cannot be said for many of the smaller or micromoths. Identifications, especially of the latter, can be difficult or are at present impossible, until such time as revisionary studies are made. Also, genitalic dissection and examination is

necessary for positive identification in some groups. For these reasons, some of the determinations should be regarded as tentative. The scientific names of the species are followed by the day-month-year of the collection and the number of individuals mounted; an “SR” indicates a sight record.

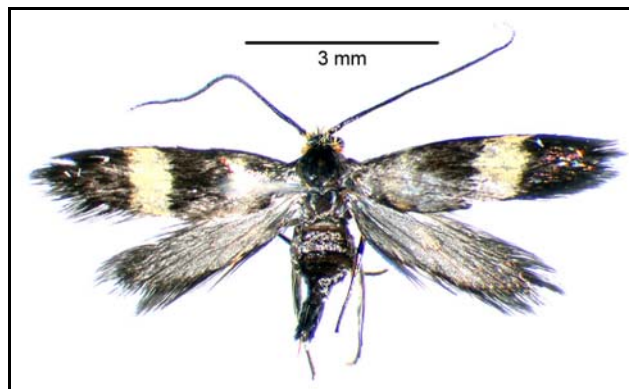
Kenneth Bowman’s (1951) list of the Lepidoptera of Alberta presents all species known at that time and gives the distribution of each according to 21 Areas. His Areas 5, 8 and 10 essentially cover all of south-central Alberta, with the study area being in Area 5. Most of Bowman’s records are from Area 10, which includes Edmonton, so most of the species found in the following list would be additions to his Area 5.

In addition to the results of the 2004 research, the present report incorporates all of the findings in the reports for the 2001, 2002 and 2003 studies, and includes a number of corrections to previous identifications.

HEPIALIDAE – Ghost Moths and Swifts

19. *Sthenopsis purpurascens* (Pack.) – 10-VII-2005 1.
 29. *Gazoryctra novigannus* (B. & Benj.) – 1-IX-2001 1, 10-IX-2002 1, 28-VIII-2004 1, 24-IX-2004 1 and 28A-VIII-2005 1.

ADELIDAE – Adelid Moths



Adela (Caucas sp.) – 12-VI-2006 1. Greg Pohl sent an image (see above) of this specimen to Dr. Ron Davis. Davis was unable to name it and it is possible that the specimen belongs to an undescribed species. The moth was collected during the day (diurnal) with a net as it was flying over *Juniperus communis* on a south-facing slope.

TINEIDAE – Clothes Moths and others

334. *Amydria effrentella* Clem. – 21-VIII-2002 1, 10-IX-2002 4, 18-VII-2004 1, 15-VIII-2004 1 and 27A-VIII-2006 1.
 399. *Tinea irrepta* Braun – 25B-VI-2003 3, 12A-VII-2003 1, 19-VI-2004 2, 18-VII-2004 1, 21-V-2005 2, 2A-VIII-2005 4 and 2B-VIII-2005 3.

421. *Monopis spilotella* (Tengström) – 6A-VIII-2006 1.

BUCULATRICIDAE – Bucculatricid Moths

Bucculatrix sp. – 25-VI-2003 1.

GRACILLARIIDAE – Gracillariid Moths

Gracillariidae indet. – 16A-V-2006 1.

583-644. *Caloptilia* spp. – 8-VI-2001 1 and 20-VI-2001 4.

587. *Caloptilia alnivorella* (Cham.) – 24-IX-2004 1 and 16B-V-2006 1.

589. *Caloptilia anthobaphes* (Meyr.) – 19-VI-2004 1.

594.1. *Caloptilia betulivora* McD. – 16A-V-2006 1 and 16B-VI-2006 2.

595. *Caloptilia bimaculatella* (Ely) – 8-VIII-2001 1.

639. *Caloptilia stigmatella* (F.) – 8-VI-2001 1 and 6A-VIII-2006 1.

669. *Parornix conspicuella* (Dietz) – 19-VI-2004 3, 21-VI-2005 2 and 12C-V-2006 1.

692. *Acrocercops astericola* (F. & B.) – 21-VI-2005 1.

725/802. *Phyllonorycter* sp. – 21-VI-2005 1.

OECOPHORIDAE – Oecophorid Moths

889. *Agonopterix argillacea* (Wlsm.) – 28A-VIII-2005 1.

908. *Depressariodes ciniflonella* Lienig. & Zell. – 2B-VIII-2005 1, 28A-VIII-2005 2 and 16B-V-2006 3.

910. *Martyrhilda fulva* (Wlsm.) – 8-VI-2001 1, 20-VI-2001 1 and 12C-VI-2006 3.

912. *Semioscopis packardella* (Clem.) – 22A-IV-2005 2.

915. *Semioscopis megamicrella* Dyar – 22A-IV-2005 3 and 22B-IV-2005 2.

916. *Semioscopis aurorella* Dyar – 22A-IV-2005 1.

918. *Depressaria atrostrigella* Clarke – 24-IX-2004 6, 28A-VIII-2005 2 and 27B-VIII-2006 1.

926. *Depressaria alienella* Bsk. – 28A-VIII-2005 1.

1058. *Polix coloradella* (Wlsm.) – 28A-VIII-2005 1.

ELACHISTIDAE – Elachistid Moths

Elachista sp. – 27-VI-2002 1, 12-VII-2003 1, 12B-VII-2003 1, 12B-VI-2006 2 and 12C-VI-2006 4.

1088.01. *Elachista virgatula* Kaila – 25B-VI-2003 1.

SYMMOCIDAE – Symmocid Moths

1138.31. *Glyphidocera hurlberti* Adamski – 18-VII-2004 1. This species was described by Adamski in 2000.

BLASTOBASIDAE – Blastobasid Moths

1133-1253. Species unknown – 10-IX-2002 3, 28A-VIII-2005 1, 6A-VIII-2006 1 and 6B-VIII-2006 1. Species in this family are still very poorly known.

1156. *Hypatopa titanella* McD. – 18-VII-2004 1.

COLEOPHORIDAE – Casebearer Moths

1254-1398. *Coleophora* spp. – 20-VI-2001 1, 8-VIII-2001 1, 27-VI-2002 3, 12-VII-2002 2, 10-IX-2002 1, 25C-VI-2003 2, 12A-VII-2003 1, 12B-VII-2003 2, 19-VI-2004 1, 18-VII-2004 4, 15-VIII-2004 4, 28-VIII-2004 1, 21-VI-2005 4, 2A-VIII-2005 1, 2B-VIII-2005 1, 28A-VIII-2005 3, 12B-VI-2006 2, 12C-VI-2006 1, 6A-VIII-2006 1, 6B-VIII-2006 1, 27A-VIII-2006 1, 27B-VIII-2006 2 and 27C-VIII-2006 1. The above specimens are currently with Dr. J.-F. Landry who is doing a North American monograph of the group. Some of the specimens may be of species that remain to be described.

1313. *Coleophora rosaevorella* McD. – 19-VI-2004 1.

1352. *Coleophora sparsipulvella* Cham. – 12B-VII-2004 1.

1388. *Coleophora trifolii* (Curt.) (Large Clover Case-bearer) – 20-VI-2001 1, 12-VII-2002 2, 12B-VII-2003 1 and 18-VII-2004 2.

1399. *Batrachedra praeangusta* (Haw.) – 27A-VIII-2006 1.

MOMPHIDAE – Momphid Moths

Mompha sp. – 21-VI-2005 1.

COSMOPTERYGIDAE – Cosmopterygid Moths

1515. *Lymnaecia phragmitella* Staint. – 15-VIII-2004 2.

1615. *Walshia miscecolorella* (Cham.) – 27-VI-2002 1, 12-VII-2002 1, 25C-VI-2003 2, 12A-VII-2003 1, 12B-VII-2003 2, 18-VII-2004 3, 21-VI-2005 1, 2A-VIII-2005 1, 12B-VI-2006 2 and 27B-VIII-2006 1.

SCYTHRIDIDAE – Scythrid Moths

1655. *Scythris eboracensis* (Haw.) – 12-VI-2006 1. Determined by Dr. Jean-François Landry.

GELECHIIDAE – Gelechiid Moths

1681-2311. Species unknown – 4-VI-2002 9, 27-VI-2002 1, 12-VII-2002 5, 21-VIII-2002 9, 10-IX-2002 9, 19-VI-2004 8, 18-VII-2004 15, 15-VIII-2004 14, 28-VIII-2004 12, 24-IX-2004 13, 22A-IV-2005 5, 22B-IV-2005 1, 21-VI-2005 10, 2A-VIII-2005 4, 2B-VIII-2005 5, 28A-VIII-2005 17, 16A-V-2006 2, 16B-V-2006 1, 12A-VI-2006 1, 12C-VI-2006 5, 2B-VIII-2006 1, 6A-VIII-2006 4, 6B-VIII-2006 2,

- 27A-VIII-2006 4, 27B-VIII-2006 6 and 27C-VIII-2006 1. Little is known about many of the species in this family and it may be many years before some of these specimens are determined or even described.
- 1734-1762. *Aristotelia* sp. – 21-VIII-2002 1.
1734. *Aristotelia devexella* Braun – 25C-VI-2003 1, 15-VIII-2004 3, 2A-VIII-2005 1 and 28A-VIII-2005 1.
1761. *Aristotelia roseosuffusella* (Clem.) – 10-IX-2002 2, 15-VIII-2004 2 and 28A-VIII-2005 1.
1762. *Aristotelia rubidella* (Clem.) – 2-VIII-2002 1 and 25C-VI-2003 1.
1792. *Coleotechnites atrupictella* Dietz – 2B-VIII-2005 2.
1796. *Coleotechnites blastovora* McLeod – 22A-IV-2005 5, 22B-IV-2005 2 and 16B-V-2006 5.
1826. *Coleotechnites picaella* (Kft.) – 18-VII-2004 1 and 28A-VIII-2005 1.
1880. *Xenolechia velatella* (Bsk.) – 19-VI-2004 1.
1898. *Lita sexpunctella* (F.) – 2-V-2004 SR GP. Observed on the “Dry Island” by Greg Pohl. It was associated with bearberry.
1902. *Lita variabilis* (Bsk.) – 21-VIII-2002 5, 10-IX-2002 8, 15-VIII-2004 3, 28-VIII-2004 1, 28A-VIII-2005 8, 6C-VIII-2006 1, 27B-VIII-2006 1 and 27C-VIII-2006 2.
1946. *Gelechia lynceola* Zell. – 10-IX-2002 1, 19-VI-2004 1 and 21-VI-2005 1.
- 1968-2010. *Gnorimoschema* sp. – 1-IX-2001 1.
2000. *Gnorimoschema septentrionella* Fyles – 24-IX-2004 1.
2040. *Caryocolum casella* (Wlk.) – 20-VI-2001 2.
- 2054-2125. *Chionodes* spp. – 8-VI-2001 2, 18-VII-2004 1.
- 2069.11. *Chionodes sattleri* Hodges – 19-VI-2004 1, 15-VIII-2004 1, 21-VI-2005 5 and 6A-VIII-2006 1.
- 2071.1. *Chionodes landryi* Hodges – 27-VI-2002 6, 12B-VII-2003 10, 12B-VI-2006 2 and 12C-VI-2006 1.
2093. *Chionodes mediofuscella* (Clem.) – 4-VI-2002 1, 25C-VI-2003 1, 19-VI-2004 6, 21-VI-2005 2 and 28A-VIII-2005 2, 16B-V-2006 1..
2099. *Chionodes obscuruscella* (Cham.) – 28A-VIII-2005 8.
2111. *Chionodes psilopterus* (B. & Bsk.) – 1-IX-2001 1, 25-VI-2003 1, 12A-VII-2003 1, 12B-VII-2003 1, 19-VI-2004 1, 18-VII-2004 2, 15-VIII-2004 5, 2B-VIII-2005 1, 12C-VI-2006 1, 6A-VIII-2006 2, 6B-VIII-2006 2, 27A-VIII-2006 1, 27B-VIII-2006 2 and 27C-VIII-2006 2.
2117. *Chionodes terminimaculella* (Kft.) – 20-VI-2001 1 and 27-VI-2002 1.
2123. *Chionodes viduella* (F.) – 18-VII-2004 6.
2127. *Filatima abactella* (Clarke) – 27-VI-2002 2, 19-VI-2004 2, 21-VI-2005 1, 16A-V-2006 1 and 16B-V-2006 1.
2192. *Aroga* nr. *paraplutella* (Bsk.) – 20-VI-2001 2, 27-VI-2002 2. The specimens were examined by Dr, Jean-François Landry who originally thought that they were of *Aroga paraplutella* which would have been a new species for Alberta. Further examination indicates that this material is of an undescribed species of *Aroga*.
2235. *Anacampsis fragariella* Bsk. – 28 A-VIII-2005 1.
2237. *Anacampsis innocuella* (Zell.) – 28A-VIII-2005 9 and 16A-V-2006 1.

2243. *Anacampsis niveopulvella* (Cham.) – 18-VII-2004 4, 15-VIII-2004 3 and 28A-VIII-2005 4.
2267. *Helcystogramma fernaldella* (Bsk.) – 20-VI-2001 1, 27-VI-2002 1, 25C-VI-2003 1 and 12B-VI-2006 2.
2302. *Dichomeris setosella* (Clem.) – 28A-VIII-2005 2.
2303. *Dichomeris simpliciella* Bsk. – 12B-VII-2003 1, 18-VII-2004 3, 28-VIII-2004 1, 24-IX-2004 1 and 21-VI-2005 1.
2308. *Dichomeris purpureofusca* (Wlsm.) – 20-VI-2001 1.

ALUCITIDAE – Many-plume Moths

2313. *Alucita montana* Barnes & Lindsey (Six Plume Moth) – 20-VI-2001 3, 8-VIII-2001 1, 1-IX-2001 2, 4-VI-2002 5, 10-IX-2002 1, 25A-VI-2003 1, 19-VI-2004 2, 24-IX-2004 2 and 21-VI-2005 1. Bernard Landry and Jean-François Landry (2004) have shown that true *hexadactyla* does not occur in North America and that three other species occur in Alberta.

EPERMINIIDAE – Eperminiid Moths

2334. *Ochromolopis ramapoella* (Kft.) – 8-VI-2001 2, 20-VI-2001 6 and 27-VI-2002 1, 16B-V-2006 1 and 12C-VI-2006 4. Reported as new to Alberta in Pohl et al (2005).

PLUTELLIDAE – Plutellid Moths

2366. *Plutella xylostella* (L.) (Diamondback Moth) – 8-VIII-2001 2, 1-IX-2001 1, 10-IX-2002 1, 24-IX-2004 4, 22A-IV-2005 1, 22B-IV-2005 1, 21-VI-2005 3, 2B-VIII-2005 1, 28A-VIII-2005 2, 6A-VIII-2006 1, 27A-VIII-2006 1, 27B-VIII-2006 1 and 27C-VIII-2006 1.
2371. *Ypsolopha canariella* (Wlsm.) – 1-IX-2001 1, 21-VIII-2002 1, 10-IX-2002 1, 15-VIII-2004 1, 18-VIII-2004 2, 2B-VIII-2005 1 and 28A-VIII-2005 1.
2376. *Ypsolopha dentiferella* (Wlsm.) – 15-VIII-2004 1, 28A-VIII-2005 1, 27A-VIII-2006 1 and 27B-VIII-2006 1.
2380. *Ypsolopha falciferella* (Wlsm.) – 18-VII-2004 1, 22A-IV-2005 2 and 16A-V-2006 1.

ARGYRESTHIIDAE – Argyresthiid Moths

- 2433-2484. *Argyresthia* sp. – 19-VI-2004 1.
2449. *Argyresthia conjugella* Zell. – 20-VI-2001 1, 18-VII-2004 2, 6A-VIII-2006 1 and 6B-VIII-2006 1.



SESIIDAE – Sesiid Moths

2581. *Synanthedon polygona* (Hy. Edw.) – 5-VI-2006 photo by Dr. Heather Proctor (see above). This is a first report of this western North American species for Alberta. The food plant is thought to be *Eriogonum flavum* (Yellow Umbrella-plant) which occurs on steep south-facing slopes in the area.

TORTRICIDAE – Tortricid Moths

- Species unknown – 8-VI-2001 2, 20-VI-2001 1 and 28A-VIII-2005 1.
Bactra sp. – 10-IX-2002 1 (female).
 2743a. *Endothenia nubilana* (Clem.) – 18-VII-2004 2.
 2745. *Endothenia albolineana* (Kft.) (Spruce Needleminer) – 19-VI-2004 1 and 21-VI-2005 4.
 2753. *Apotomis capreana* (Hbn.) (Sallow Apotomis Moth) – 16A-V-2006 1.
 2766. *Apotomis dextrana* (McD.) (Green Aspen Leafroller Moth) – 8-VIII-2001 1, 4-VI-2002 1 and 27-VI-2002 1.
 2769. *Pseudosciaphila duplex* (Wlsm.) (Spotted Aspen Leafroller Moth) – 27-VI-2002 1, 21-VI-2005 1 and 12A-VI-2006 2.
 2770. *Orthotaenia undulana* (D. & S.) (Dusky Leafroller Moth) – 20-VI-2001 4 and 19-VI-2004 6, 21-VI-2005 5, 12A-VI-2006 3, 12B-VI-2006 1 and 12C-VI-2006 3.
 2774-2859. *Olethreutes* spp. – 8-VIII-2001 1, 27-VI-2002 1, 10-IX-2002 1, 25A-VI-2003 1, 25C-VI-2003 1, 12B-VII-2003 1, 18-VII-2004 3, 15-VIII-2004 1, 21-VI-2005 1, 2A-VIII-2005 1, 12A-VI-2006 2 and 12C-VI-2006 1. Many of the species in this genus are difficult to identify and require genitalic examination.
 2788. *Olethreutes inornatana* (Clem.) (Inornate Olethreutes Moth) – 18-VII-2004 1 and 21-VI-2005 1.
 2794. *Olethreutes quadrifidus* (Zell.) – 27-VI-2002 1 and 21-VI-2005 5.
 2821. *Olethreutes appendicea* (Zell.) (Serviceberry Olethreutes Moth) – 16A-V-2006 2.
 2835. *Olethreutes galaxana* Kft. – 8-VI-2001 1 and 20-VI-2001 1.
 2861. *Hedya ochroleucana* (Frölich) (Off-white Hedya Moth) – 18-VII-2004 1.
 2900. *Petrova burkeana* (Kft.) – 18-VII-2004 1.
 2937. *Phaneta parmatana* (Clem.) – 12A-VI-2006 1.
 2947. *Phaneta influana* (Heinr.) – 17-VI-2002 2.
 2956. *Phaneta tarandana* (Mösch.) – 10-IX-2002 2, 15-VIII-2004 1 and 27C-VIII-2006 1.

2965. *Phaneta fertoriana* (Heinr.) – 20-VI-2001 2, 25A-VI-2003 4, 19-VI-2004 2 and 21-VI-2005 2.
2969. *Phaneta indagatricana* (Heinr.) – 12A-VII-2003 1, 12B-VII-2003 2, 18-VII-2004 7, 12B-VI-2006 1 and 12C-VI-2006 1.
2972. *Phaneta dorsiatomana* (Kft.) – 4-VI-2002 2.
2973. *Phaneta striatana* (Clem.) – 27-VI-2002 1, 21-VI-2005 2, 16B-V-2006 1 and 12B-VI-2006 1.
2977. *Phaneta modicellana* (Heinr.) – 25A-VI-2003 1 and 18-VII-2004 3.
2980. *Phaneta pallidicostana* (Wlsm.) – 27-VI-2002 1, 12-VII-2002 1, 18-VII-2004 3, 12B-VI-2006 1 and 12C-VI-2006 1.
2985. *Phaneta infimbriana* (Dyar) – 2A-VIII-2005 1, 28A-VIII-2005 4, 6B-VIII-2006 2, 27B-VIII-2006 1 and 27C-VIII-2006 1.
2986. *Phaneta octopunctana* (Wlsm.) – 12B-VII-2003 2.
- Eucosma* n. sp. 1 – 10-IX-2002 1. Mentioned in last year's report as 3156 *Pelochrista occipitana*, this is an undescribed species according to Dr. Don Wright.
3014. *Eucosma ridingsana* (Rob.) (Riding's *Eucosma* Moth) – 10-IX-2002 1.
3031. *Eucosma serpentana* (Wlsm.) – 27-VI-2002 1, 12-VII-2002 1, 21-VIII-2002 1, 10-IX-2002 3, 12B-VII-2003 2, 18-VII-2004 6, 15-VIII-2004 5, 28-VIII-2004 2, 24-IX-2004 1, 21-VI-2005 2, 28A-VIII-2005 3, 12B-VI-2006 1 and 12C-VI-2006 2.
3035. *Eucosma morrisonii* (Wlsm.) – 18-VII-2004 5.
3037. *Eucosma agricolana* (Wlsm.) – 27-VI-2002 7, 12-VII-2002 1, 10-IX-2002 1, 25B-VI-2003 1, 12B-VII-2003 2, 19-VI-2004 15, 18-VII-2004 14, 15-VIII-2004 4, 21-VI-2005 11, 16A-V-2006 1, 12A-VI-2006 1, 12B-VI-2006 3 and 12C-VI-2006 2.
3049. *Eucosma serapicana* (Heinr.) – 8-VI-2001 1, 20-VI-2001 1 and 27-VI-2002 1.
3104. *Eucosma mediotriata* (Wlsm.) – 18-VII-2004 14.
3116. *Eucosma dorsisignatana* (Clem.) (Triangle-backed *Eucosma* Moth) – 27A-VIII-2006 1, 27B-VIII-2006 3, 27C-VIII-2006 2 – 1-IX-2001 1, 10-IX-2002 2, 28A-VIII-2005 3 and 12C-VI-2006 1.
3119. *Eucosma juncticiliana* (Wlsm.) – 6B-VIII-2006 1.
3133. *Eucosma consobrinana* (Heinr.) – 18-VII-2004 1.
3142. *Eucosma cataclystana* (Wlk.) (Solidago *Eucosma* Moth) – 25B-VI-2003 1 and 21-VI-2005 1.
- Pelochrista* n. sp. 3 – 15-VIII-2004 1. Mentioned in last year's report as *Pelochrista occipitana*, this is an undescribed species according to Dr. Don Wright.
- 3151a. *Pelochrista scintillana* (Clem.) – 18-VII-2004 4.
3156. *Pelochrista occipitana* (Zell) group – 21-VI-2005 2.
3161. *Pelochrista fuscosparsa* (Wlsm.) – 8-VI-2001 1, 20-VI-2001 1, 27-VI-2002 1, 12B-VII-2003 1 and 26-VI-2004 2.
3185. *Epiblema benignatum* (McD.) – 18-VII-2004 2, 21-VI-2005 2, 28A-VIII-2005 2, 27B-VIII-2006 4 and 27C-VIII-2006 1.
3209. *Notocelia purpurissitana* (Heinr.) – 27-VI-2002 1, 19-VI-2004 2 and 18-VII-2004 5.
3211. *Notocelia culminana* (Wlsm.) – 10-IX-2002 1, 2A-VIII-2005 1, 2B-VIII-2005 4, 6A-VIII-2006 1 and 27B-VIII-2006 1.
3223. *Gypsonoma fasciolana* (Clem.) – 20-VI-2001 5, 12A-VI-2006 2 and 12C-VI-2006 1.
3227. *Gypsonoma substitutionis* (Heinr.) – 12A-VI-2006 1.

3229. *Gypsonoma adjuncta* Heinr. – 12A-VI-2006 3.
3230. *Proteoteras aesculana* Riley (Early *Proteoteras* Moth) – 27A-VIII-2006 1.
3248. *Pseudexentera oregonana* (Wlsm.) (Early Aspen Leafroller) – 22A-IV-2005 1, 16A-V-2006 1 and 16B-V-2006 1.
3269. *Griselda radicana* Heinr. – 24-IX-2004 1 and 27A-VIII-2006 1.
3276. *Rhopobota naevana* (Haw.) (Holly Tortrix Moth) – 24-IX-2004 1, 2B-VIII-2005 2 and 28A-VIII-2005 2.
3288. *Epinotia castaneana* (Wlsm.) – 18-VII-2004 1.
3296. *Epinotia albicapitana* (Kft.) – 24-IX-2004 4, 27A-VIII-2006 4 and 27B-VIII-2006 2. Reported as new for Alberta in Pohl et al (2005).
3306. *Epinotia nisella* (Cl.) (Variable Tortrix Moth) – 10-IX-2002 1, 18-VII-2004 4, 15-VIII-2004 3, 24-IX-2004 1, 28A-VIII-2005 1, 6A-VIII-2006 2 and 27A-VIII-2006 1.
3307. *Epinota criddleana* Kft. – 28A-VIII-2005 1.
3324. *Epinotia columbia* sensu R.L. Brown – 6B-VIII-2006 1. This appears to be new to Alberta.
3342. *Epinotia lomonana* (Kft.) – 24-IX-2004 5, 28A-VIII-2005 6 and 27A-VIII-2006 2..
3351. *Epinotia lindana* (Fern.) (Diamondback *Epinotia* Moth) – 28-VIII-2004 1, 28A-VIII-2005 5 and 27A-VIII-2006 3.
3355. *Ancylis subaequana* (Zell.) – 21-VI-2005 1 and 12C-VI-2006 1.
3374. *Ancylis comptana* (Frölich) (Strawberry Leafroller Moth) – 19A-VI-2006 1.
3382. *Ancylis unguicella* (L.) – 19-VI-2004 2 and 12B-VI-2006 1.
3384. *Ancylis mediofusca* (Clem.) – 8-VI-2001 1, 16A-V-2006 2 and 16B-V-2006 2.
3386. *Ancylis tineana* (Hbn.) – 8-VI-2001 1.
3391. *Hystrichophora stygiana* (Dyar) – 25B-VI-2003 1, 12B-VII-2003 1, 19-VI-2004 2, 18-VII-2004 1, 2A-VIII-2005 1, 6A-VIII-2006 1, 6C-VIII-2006 1 and 27A-VIII-2006 1.
3396. *Hystrichophora ochreicostana* (Wlsm.) – 18-VII-2004 1 and 21-VI-2005 2.
3399. *Hystrichophora vestaliana* (Zell.) – 21-VI-2005 4. New to Alberta.
3404. *Dichorampha simulana* (Wlsm.) – 27-VI-2002 1.
3406. *Dichorampha bittana* (Bsk.) – 19-VI-2004 1.
3412. *Dichrorampha sedatana* (Bsk.) (Tanacetum Root Moth) – 8-VI-2002 1.
- Cydia* or *Dichrorampha* – 21-VI-2005 1.
3455. *Cydia strobilella* (L.) – 12B-VI-2006 1.
3460. *Cydia ingrata* (Heinr.) – 16B-V-2006 3.
3463. *Cydia populana* (Bsk.) – 27-VI-2002 1 and 21-VI-2005 1.
3465. *Cydia flexiloqua* (Heinr.) – 27-VI-2002 1 and 2B-VIII-2005 1.
3502. *Croesia albicomana* (Clem.) – 12-VII-2002 2, 12B-VII-2003 1, 18-VII-2004 2 and 2B-VIII-2005 1.
- 3506-3563. *Acleris* sp. – 10-IX-2002 1 and 27B-VIII-2006 1.
3525. *Acleris forbesana* (McD.) – 16A-V-2006 1 and 16B-V-2006 4.
3529. *Acleris oxycoccana* (Pack.) – 20-VI-2001 1, 24-IX-2004 1 and 27A-VIII-2006 1.
3536. *Acleris robinsoniana* (Fbs.) – 24-IX-2004 1, 28A-VIII-2005 3, 6A-VIII-2006 1, 6B-VIII-2006 1, 27A-VIII-2006 1, 27B-VIII-2006 1 and 27C-VIII-2006 1.
3548. *Acleris variana* (Fern.) (Black-headed Budworm Moth) – 28A-VIII-2005 2 and 6A-VIII-2006 2.

3559. *Acleris emargana* (F.) (Hook-winged Tortrix Moth) – 27A-VIII-2006 1.
 3568. *Eana argentana* (Cl.) – 12-VII-2002 1.
 3580. *Decodes hororianus* (Wlsm.) – 1-IX-2001 1, 10-IX-2002 1 and 24-IX-2004 2.
 3595. *Pandemis canadana* Kft. (Green Aspen Leafier) – 6B-VIII-2006 1.
 3621. *Argyrotaenia quadrifasciana* (Fern.) (Lesser All-green Leafroller Moth) – 2B-VIII-2005 1.
 3635. *Choristoneura rosaceana* (Harr.) (Oblique-banded Leafroller Moth) – 12-VII-2002 2, 18-VII-2004 4, 15-VIII-2004 1, 6A-VIII-2006 2 and 27A-VIII-2006 1.
 3536. *Acleris robinsoniana* (Fbs.) – 24-IX-2004 1.
 3637. *Choristoneura conflictana* (Wlk.) (Large Aspen Tortrix) – 27-VI-2002 1, 12-VII-2002 1, 19-VI-2004 2, 18-VII-2004 2, 21-VI-2005 2 and 12C-VI-2006 1.
 3638. *Choristoneura fumiferana* (Clem.) (Spruce Budworm Moth) – 15-VIII-2004 6.
 3648. *Archips argyrospila* (Wlk.) (Fruit-tree Leafroller Moth) – 18-VII-2004 1.
 3661. *Archips cerasivorana* (Fitch) (Ugly Nest Caterpillar Moth) – 2A-VIII-2005 1.
 3675. *Aphelia alleniana* (Fern.) – 20/21-VII-2001 1 E. Mengersen (OLDS), 12-VII-2002 1 and 25C-VI-2003 1.
 3682. *Clepsis persicana* (Fitch) (White Triangle Tortrix Moth) – 20-VI-2001 3, 27-VI-2002 2, 12-VII-2002 1, 18-VII-2004 1, 21-VI-2005 2, 12A-VI-2006 1 and 12C-VI-2006 1.
 3684. *Clepsis clemensiana* (Fern.) (Clemen's Clepsis Moth) – 28-VIII-2004 1.
 3688. *Ptycholoma peritana* (Clem.) (Garden Tortrix Moth) – 18-VII-2004 1 and 2A-VIII-2005 1.
 3689. *Ptycholoma virescana* (Clem.) – 27C-VIII-2006 2.
 3706. *Sparganothis xanthoides* (Wlk.) (Mosaic Sparganothis Moth) – 12-VII-2002 1.
 3711. *Sparganothis unifasciana* (Clem.) (One-lined Sparganothis Moth) – 12-VII-2002 2, 25C-VI-2003 1, 12B-VII-2003 1, 18-VII-2004 3 and 21-VI-2005 1.
 3712. *Sparganothis vocaridorsana* Kft. – 20-VI-2001 1.
 3720. *Sparganothis reticulatana* (Clem.) (Reticulated Fruitworm Moth) – 10-IX-2002 2 and 18-VII-2004 2.
 3740. *Platynota idaeusalis* (Wlk.) (Tufted Apple Bud Moth) – 18-VII-2004 1 and 28A-VIII-2005 1.

COCHYLIDAE – Cochylid Moths

The members of this family are being revised by Dr. Eric Metzler and Dr. John Brown. Some of the following specimens are now being studied by them.

3758. *Aethes rutilana* (Hbn.) – 12-VII-2002 1.
 3792. *Phtheochroa fulvuplicana* (Wlsm.) – 12-VII-2002 1 and 18-VII-2004 1.

HESPERIIDAE - Skippers

3910. *Thorybes pylades* (Scudder) (Northern Cloudywing) – 7-VII-2002 SR.
 3966. *Pyrgus communis* (Grt.) (Checkered Skipper) – 2-VII-1999 SR, 11-VII-2000 SR, 8-VII-2001 SR, 7-VII-2002 SR, 6-VII-2003 7 SR, 11-VII-2004 1 SR and 10-VII-2005 2 SR.

4007. *Oarisma garita* (Reak.) (Garita Skipperling) – 2-VII-1999 SR, 11-VII-2000 SR, 8-VII-2001 SR, 7-VII-2002 SR, 6-VII-2003 1 SR, 11-VII-2004 23 SR and 10-VII-2005 4 SR, 12-VI-2006 1 and 9-VII-2006 5 SR.
4041. *Polites themistocles* (Latr.) (Tawny-edged Skipper) – 7-VII-2002 SR.
4043. *Polites mystic* (Edw.) (Long Dash Skipper) – 8-VII-2002? SR and 7-VII-2002 SR.

PAPILIONIDAE - Swallowtails

4166. *Papilio machaon dodi* McD. (Dod's Old World Swallowtail) – 2-VII-1999 SR, 11-VII-2000 (SR, 8-VII-2001 SR, 7-VII-2002 SR, 6-VII-2003 1 SR, 11-VII-2004 12 SR and 10-VII-2005 7 SR.
- 4176a. *Papilio glaucus canadensis* (R. & J.) (Canadian Tiger Swallowtail) – 2-VII-1999 SR, 7-VII-2002 SR and 6-VII-2003 1 SR.

PIERIDAE – White and Sulphur Butterflies

4194. *Pieris occidentalis* (Reak.) (Western Checkered White) – 2-VII-1999 SR, 8-VII-2001 SR, 7-VII-2002 SR, 10-VII-2005 14 SR and 9-VII-2006 30 SR.
4197. *Pieris rapae* (L.) (Cabbage Butterfly) – 8-VII-2001 SR, 7-VII-2002 SR, 10-VII-2005 1 SR and 9-VII-2006 5 SR.
4209. *Colias philodice* Godt. (Clouded Sulphur) – 2-VII-1999 SR, 8-VII-2001 SR, 7-VII-2002 SR, 12-VI-2006 1 and 10-VII-2005 7 SR.
- 4211e. *Colias christina* Edw. (Christina Sulphur) – 11-VII-2000 SR, 7-VII-2002 SR and 6-VII-2003 1 SR.

LYCAENIDAE – Blue and Copper Butterflies

4275. *Harkenclenus titus* (F.) (Coral Hairstreak) – 8-VII-2001 SR, 7-VII-2002 SR, 11-VII-2004 3 SR and 10-VII-2005 1.
4362. *Everes amyntula* (Bdv.) (Western Tailed Blue) – 2-VII-1999 SR, 8-VII-2001 SR, 7-VII-2002 SR and 9-VII-2006 1 SR.
4363. *Celastrina ladon* (Cram.) (Spring Azure) – 2-V-2004 SR GP. Observed on the “Dry Island” by Greg Pohl.
- 4372a. *Glaucopsyche lygdamus couperi* Grt. (Silvery Blue) – 8-VII-2001 SR, 7-VII-2002 SR, 6-VII-2003 2 SR.
4375. *Lycaeides melissa* (Edw.) (Melissa Blue) – 11-VII-2001 SR, 8-VII-2001 SR, 7-VII-2002 SR, 10-VII-2005 1 SR and 12-VI-2006 3.
4376. *Plebejus saepiolus* (Bdv.) (Greenish Blue) – 2-VII-1999 SR, 8-VI-2001 1, 7-VII-2002 SR, 6-VII-2003 2 SR, 11-VII-2004 1 SR and 12-VI-2006 3.
4379. *Icaricia shasta* (Edw.) (Shasta Blue) – 2-VII-1999 SR, 2-VII-2000 2, 8-VII-2001 SR, 7-VII-2002 SR, 10-VII-2005 3 SR and 12-VI-2006 1.
4380. *Icaricia acmon* (Westwood & Hewitson) (Acmon Blue) – 11-VII-2000 SR and 7-VII-2002 SR.
- 4384d. *Plebejus rusticus rusticus* (Edw.) (Rustic or Arctic Blue) – 12-VI-2006 1.

NYMPHALIDAE - Fritillaries

4427. *Polygonia gracilis* (G. & R.) (Hoary Comma) – 8-VII-2001 SR.
 4435. *Vanessa cardui* (L.) – 10-VII-2005 8 SR
 4437. *Vanessa atalanta* (L.) (Red Admiral) – 8-VII-2001 SR and 7-VII-2002 SR.
 4450c. *Speyeria cybele pseudocarpenteri* (Edw.) (Great Spangled Fritillary) – 8-VII-2001 SR and 7-VII-2002 SR.
 4451. *Speyeria aphrodite* (F.) (Aphrodite Fritillary) – 11-VII-2000 SR, 8-VII-2001 SR, 7-VII-2002 SR and 11-VII-2004 1 SR.
 4457. *Speyeria callippe* (Bdv.) – 16 VII-2006 1.
 4459s. *Speyeria atlantis lais* (Edw.) (Northwestern Fritillary) – 2-VII-1999 SR, 2-VII-2000 1, 8-VII-2001 SR, 7-VII-2002 SR, 6-VII-2003 7 SR, 11-VII-2004 4 SR and 10-VII-2005 6 SR.
 4481.1. *Phyciodes cocyta* (Cram.) (Northern Pearl Crescent) – 2-VII-1999 SR, 2-VII-2000 1, 11-VII-2000 SR, 8-VII-2000 SR, 7-VII-2002 SR, 11-VII-2004 1 SR and 10-VII-2005 8 SR.
 4482. *Phyciodes batesii* (Reak.) (Tawny Crescent) – 2-VII-1999 SR, 11-VII-2000 1, 2-VII-2000 1, 8-VII-2001 SR, 7-VII-2002 SR, 6-VII-2003 1 SR, 11-VII-2004 5 SR, 10-VII-2005 3 SR and 12-VI-2006 1.
 4522. *Basilarchia arthemis* (Drury) (White Admiral) – 2-VII-1999 SR, 11-VII-2000 SR, 8-VII-2001 SR, 7-VII-2002 SR, 11-VII-2004 3 SR, 10-VII-2005 2 SR and 9-VII-2006 3.

SATYRIDAE – Browns and Alpines

- 4583b. *Coenonympha inornata benjamini* McD. (Inornate Ringlet) – 2-VII-1999 SR, 11-VII-2000 SR, 8-VII-2001 SR, 7-VII-2002 SR, 6-VII-2003 4 SR and 10-VII-2005 10 SR.
 4587. *Cercyonis pegala* (F.) (Common Wood Nymph or Meadow Brown) – 9-VII-2006 10 SR.
 4596. *Erebia discoidalis* (Kby.) (Red-disked Alpine) – 2-V-2004 SR GP. Observed by Greg Pohl.
 4599. *Erebia epipsodea* Butler (Common Alpine) – 2-VII-1999 SR and 10-VII-2005 5 SR.

PYRALIDAE – Pyralid or Snout Moths

4703. *Gesneria centuriella* (D. & S.) – 18-VII-2004 1.
 4716. *Scoparia biplagiata* Wlk. (Double-striped Scoparia Moth) – 5-VIII-2001 5, 18-VII-2004 1, 2A-VIII-2005 1 and 2B-VIII-2005 2, 2B-VIII-2006 2 and 6A-VIII-2006 1.
 4773. *Petrophila kearfottalis* (B. & McD.) – 8-VIII-2001 4, 1-IX-2001 1, 12A-VII-2003 1, 12B-VII-2003 1, 18-VII-2004 1, 2B-VIII-2005 1, 27A-VIII-2006 2 and 27B-VIII-2006 1.
 4826. *Mimoschinia rufofascialis* (Steph.) – 25B-VI-2003 1.

4951. *Perispasta caeculialis* Zell. (Titian Peale's Pyralid Moth) – 20-VI-2001 1, 27-VI-2002 2, 12B-VII-2003 1, 21-VI-2005 1 and 12C-VI-2006 1.
4957. *Mutuuraia mysippusalis* (Wlk.) – 18-VII-2004 1 and 21-VI-2005 1.
4974. *Achyra bifidalis* (F.) – 12B-VI-2006 2 and 6A-VIII-2006 1.
4987. *Sitochroa chortalis* (Grt.) (*Sitochroa* Moth) – 2-VII-1999 SR, 2-VII-2000 1, 8-VI-2001 1, 20-VI-2001 2, 27-VI-2002 1 and 19-VI-2004 1.
5004. *Loxostege sticticalis* (L.) (Beet Webworm Moth) – 27-VI-2002 1, 12-VII-2002 2, 25A-VI-2003 1, 12B-VII-2003 1, 19-VI-2004 3, 18-VII-2004 2, 15-VIII-2004 2, 21-VI-2005 2, 12-VI-2006 2 and 27B-VIII-2006 1.
5017. *Loxostege cereralis* (Zell.) (Alfalfa Webworm Moth) – 21-VI-2005 1.
5032. *Pyrausta nicalis* (Grt.) – 25C-VI-2003 1 and 21-VI-2005 3.
5034. *Pyrausta signatalis* (Wlk.) (Raspberry *Pyrausta* Moth) – 20-VI-2001 1, 27-VI-2002 3, 21-VI-2005 2, 12-VI-2006 2, 12A-VI-2006 1 and 12C-VI-2006 2.
5056. *Pyrausta generosa* (G. & R.) – 12-VII-2002 1 and 12B-VII-2003 1.
5068. *Pyrausta unifascialis* (Pack.) (Pussytoes *Pyrausta* Moth) – 20-VI-2001 1, 27-VI-2002 1, 25C-VI-2003 1 and 12-VI-2006 1.
5074. *Pyrausta fodinalis* (Led.) – 20/21-VI-2001 (EM), 12B-VII-2003 1, 18-VII-2004 3, 15-VIII-2004 1, 21-VI-2005 1, 2A-VIII-2005 2, 28A-VIII-2005 1, 12-VI-2006 4, 12A-VI-2006 2 and 6B-VIII-2006 3.
5099. *Udea itysalis* (Wlk.) – 2B-VIII-2005 1 and 6A-VIII-2006 1.
5128. *Choristostigma plumbosignalis* (Fern.) – 12-VII-2002 1.
5135. *Mecyna submedialis* (Grt.) (Orange-tines *Mecyna* Moth) – 12-VII-2002 2, 12B-VII-2003 1, 18-VII-2004 4 and 2A-VIII-2005 1.
5137. *Mecyna mustelinalis* (Pack.) – 20-VI-2001 3, 27-VI-2002 1, 12-VII-2002 1, 21-VIII-2002 1, 19-VI-2004 3, 18-VII-2004 4, 15-VIII-2004 1, 21-VI-2005 3, 2A-VIII-2005 1 and 12B-VI-2006 1.
5156. *Nomophila nearctica* Mun. (Lucerne Moth) – 6B-VIII-2006 1.
5299. *Acentria ephemerella* (Denis & Schiffermüller) (Water Veneer Moth) – 12-VII-2002 2, 10-IX-2002 3, 15-VIII-2004 2 and 21-VI-2005 1. Reported as new for Alberta from this and other areas in Pohl et al. (2005).
- 5343a. *Crambus perlellus innotatellus* Wlk. – 12-VII-2002 2, 21-VIII-2002 1, 12A-VII-2003 1, 18-VII-2004 1, 18-VIII-2004 1 and 2A-VIII-2005 1.
5345. *Crambus whitmerellus browni* Klots – 20-VI-2001 3, 27-VI-2002 5, 25A-VI-2003 1, 25C-VI-2003 1, 12B-VII-2003 1, 21-VI-2005 1, 12-VI-2006 2, 12B-VI-2006 5 and 12C-VI-2006 2.
5352. *Crambus trichusalis* (Hulst) – 28-VIII-2004 2.
5354. *Crambus ainliellus* Klots – 27B-VIII-2006 1.
- 5354/5357. *Crambus ainliellus* Klots or *leachellus* (Zinck.) – 1-IX-2001 2 and 10-IX-2002 7. Dissection of the male genitalia is necessary to differentiate these two species.
5379. *Neodactria luteolella* Clem. (Mottled Grass-veneer Moth) – 27-VI-2002 1, 18-VII-2004 2.
5380. *Neodactria zeella* (Fern.) – 12-VII-2002 1 and 15-VIII-2004 1. Material thought to be this species now appears to be a species, perhaps undescribed, of *Pediasia*.
5391. *Chrysopteuchia topiaria* (Zell.) (Cranberry Girdler or topiary Grass-veneer Moth) – 2-VII-1999 SR, 2-VII-2000 1, 20-VI-2001 14, 27-VI-2002 1, 12-VII-2002 1,

- 25C-VI-2003 1, 12B-VII-2003 1, 18-VII-2004 2, 21-VI-2005 7, 12-VI-2006 2, 12A-VI-2006 1, 12B-VI-2006 4, 12C0VI-2006 2, 27A-VIII-2006 1, 27B-VIII-2006 1 and 27C-VIII-2006 1.
5394. *Platytes vobisne* Dyar – 27-VI-2002 1. New to Alberta according to Pohl et al. (2005).
5397. *Agriphila plumbifimbriella* (Dyar) – 8-VIII-2001 2, 21-VIII-2002 3, 10-IX-2002 1, 18-VII-2004 1 and 2A-VIII-2005 3 and 6C-VIII-2006 2. The forewings lack the AM and PM lines usually associated with *A. ruricolella*. Some specimens have the ST lines usually associated with *A. plumbifimbriella*, though this line, if present, is faint. Most fresh specimens have a distinct yellowish-orange shade in the terminal area in which the seven black dots are found. *Agriphila ruricolella* lacks this feature. *Agriphila ruricolella* is basically an eastern species while *A. plumbifimbriella* is western. There are no known genitalic differences between the two species. Thus, taking everything into account, this material fits *plumbifimbriella* better than *zuricolella*. It is possible that *plumbifimbriella* should be regarded as a synonym of *zuricolella*.
5404. *Agriphila vulgivagella* (Clem.) (Vagabond Crambus Moth or Vagabond Sod Webworm Moth) – 27A-VIII-2006 2, 27B-VIII-2006 3 and 27C-VIII-2006 2.
5408. *Catoptria latiradiella* (Wlk.) (Three-spotted Crambus Moth) – 27-VI-2002 2, 12B-VII-2003 3, 19-VI-2004 1 and 18-VII-2004 7, 15-VIII-2004 1.
- 5410-5417. *Pediasia* spp. – 12-VII-2002 3, 21-VIII-2002 1, 12B-VII-2003 1, 18N-VII-2004 2, 18S-VII-2004 2 and 15-VIII-2004 3. These could be any of *Pediasia abnaki*, *aridella edmontella*, *laciniella*, or even an undescribed species.
5413. *Pediasia trisecta* (Wlk.) (Sod Webworm Moth) – 1/2-IX-2001 (EM), 12-VII-2002 1, 10-IX-2002 3, 15-VIII-2004 2, 28A-VIII-2005 4, 6A-VIII-2006 1, 6C-VIII-2006 1, 27A-VIII-2006 1, 27B-VIII-2006 1 and 27C-VIII-2006 1.
5417. *Pediasia dorsipunctella* (Kft.) – 20-VI-2001 1, 8-VIII-2001 5, 10-IX-2002 5, 12B-VII-2003 2, 18-VII-2004 2, 15-VIII-2004 3, 2A-VIII-2005 1 and 2B-VIII-2005 1.
- 5441a. *Thaumatopsis fernaldella nortella* Kft. – 8-VIII-2001 1, 27-VI-2002 2, 12-VII-2002 3, 12A-VII-2003 1 and 18-VII-2004 3.
5455. *Euchromius californicalis* (Pack.) (California Grass-veneer Moth) – 18-VII-2004 1 and 28A-VIII-2005 1.
5585. *Toripalpus trabalis* (Grt.) (Jocara Moth) – 27-VI-2002 1, 12-VII-2002 1, 12B-VII-2003 1 and 18-VII-2004 2.
5606. *Tetralopha asperatella* (Clem.) (Maple Webworm) – 19-VI-2004 2, 18-VII-2004 1, 21-VI-2005 2 and 12A-VI-2006 1.
5655. *Acrobasis tricolorella* Grt. (Tricolored Acrobasis Moth) – 12-VII-2002 1, 12A-VII-2003 1, 19-VI-2004 1, 18-VII-2004 7, 21-VI-2005 1, 2A-VIII-2005 1 and 12B-VI-2006 1.
5718. *Myelopsis subtetricella* (Rag.) – 1-IX-2001 1, 4-VI-2002 5, 27-VI-2002 2, 21-VIII-2002 8, 10-IX-2002 2, 19-VI-2004 2, 18-VII-2004 3, 24-IX-2004 1, 21-VI-2005 2, 2A-VIII-2005 1, 16A-V-2006 2, 12A-VI-2006 2 and 6A-VIII-2006 1.
5719. *Myelopsis minutularia* (Hulst) (*M. conicella*) – 4/5-VII-2001 (EM), 8/9-VIII-2001 (EM), 21-VIII-2002 2 10-IX-2002 4, 12B-VII-2003 1, 18-VII-2004 3, 15-VIII-2004 8, 28-VIII-2004 3, 24-IX-2004 2, 2A-VIII-2005 2, 28A-VIII-2005 3, 6A-VIII-2006 1 and 6B-VIII-2006 1.

5721. *Apomyelois bistratella* (Hulst) – 18-VII-2004 1.
- 5746/5751. *Pima boisduvaliella* (Gn.) or *Pima fulvirugella* (Rag.) – 8-VI-2001 2, 20-VI-2001 3, 27-VI-2002 7, 25C-VI-2003 3, 12B-VII-2003 3, 18-VII-2004 1, 21-VI-2005 1 and 12B-VI-2006 3. Though there are some general features that separate these two species, examination of the female genitalia is necessary to tell them apart (Neunzig 2003). Neunzig made *P. vividella* a synonym of *P. fulvirugella*.
5759. *Ambesa laetella* Grt. – 18-VII-2004 2.
5764. *Catastia actualis* (Hulst) – 21-VI-2005 1.
5787. *Meroptera pravella* (Grt.) (Lesser Aspen Webworm) – 27-VI-2002 2, 25C-VI-2003 1, 21-VI-2005 4, 16B-V-2006 1, 12A-VI-2006 2 and 12C-VI-2006 2.
5792. *Nephoterix fernaldi* (Rag.) – 25B-VI-2003 1 and 18-VII-2004 3. This may be an undescribed species of *Sciota* according to Dr. H. Neunzig.
5799. *Nephoterix basilaris* Zell. – 20-VI-2001 1, 27-VI-2002 4 and 12A-VI-2006 1.
5812. *Telethusia ovalis* (Pack.) – 15-VIII-2004 2.
5827. *Pyla aenigmatica* Heinr. – 21-VIII-2002 1 and 18-VII-2004 4.
5829. *Pyla fusca* (Haw.) (Speckled Black Pyla Moth) – 15-VIII-2004 1, 2A-VIII-2005 1, 2B-VIII-2005 1 and 27A-VIII-2006 2.
5831. *Pyla hanhamella* Dyar – 27-VI-2002 1. Identified by Dr. George Balogh.
5870. *Sarata caudelella* (Dyar) – 22A-IV-2005 4.
5886. *Lipographis fenestrella* (Pack.) – 15-VIII-2004 1. Reported as new to Alberta from this and another area in Pohl et al. (2005).
5918. *Hulstia undulatella* (Clem.) (Sugarbeet Crown Borer Moth) – 1/2-IX-2001 (EM), 12-VII-2002 1 and 18-VII-2004 1.
5936. *Homoeosoma stipiticellum* Grt. – 18-VII-2004 1.
5946. *Phycitoides mucidellum* (Rag.) – 8-VIII-2001 2, 10-IX-2002 1, 28A-VIII-2005 1, 27B-VIII-2006 2 and 27C-VIII-2006 1.
5968. *Zophodia grossulariella* Hbn. (Gooseberry Fruitworm Moth) – 4-VI-2002 2 and 21B-V-2003 2.
5971. *Melitara dentata* (Grt.) – 21-VIII-2002 1, 15-VIII-2004 5 and 2A-VIII-2005 2.
5999. *Eulogia ochrifrontella* (Zell.) (Broad-banded Eulogia Moth) – 12A-VII-2003 1, 12B-VII-2003 1 and 18-VII-2004 2.
- 6007a. *Vitula seratilineella* Rag. – 18-VII-2004 1, 24-IX-2004 3, 21-VI-2005 1, 2A-VIII-2005 1, 28A-VIII-2005 3, 12A-VI-2006 1, 12B-VI-2006 1, 6A-VIII-2006 3, 24A-VIII-2006 4, 27B-VIII-2006 2 and 27C-VIII-2006 1.
6038. *Anerastia lotella* (Hbn.) – 21-VIII-2002 2.
6053. *Peoria approximella* (Wlk.) (Carmine Snout Moth) – 27-VI-2002 1, 12B-VII-2003 2, 18-VII-2004 4, 15-VIII-2004 3, 21-VI-2005 4, 12B-VI-2006 3 and 12C-VI-2006 2.

PTEROPHORIDAE – Plume Moths

- 6089-6234. Indet. Pterophorids – 12-VII-2002 2, 2-VIII-2005 2, 21-VIII-2005 1 and 12-VI-2006 2. These specimens are currently being examined by Doug Macaulay.
6102. *Dejongia lobidactylus* (Fitch) – 12-VII-2003 1.
6107. *Gillmeria pallidactyla* (Haw.) – 20-VI-2001 3, 21-VI-2005 1 and 12-VI-2006 3.

6166. *Oidaematophorus mathewianus* (Zell.) (Mathew's Plume Moth) – 2-VIII-2005 1, 6-VIII-2006 1 and 27-VIII-2006 1.
 6171. *Oidaematophorus grisescens* Wlsm. – 15-VIII-2004 1.
 6203. *Hellinsia homodactylus* (Wlk.) – 18-VII-2004 1.

THYATIRIDAE – Thyatirid Moths

6248. *Ceranemota albertae* Clarke – 1-IX-2001 1, 28N-VIII-2004 2 (5 SR), 28S-VIII-2004 2 SR and 28A-VIII-2005 3 and 27A-VIII-2006 1.

DREPANIDAE – Hooktips

6252. *Drepana bilineata* (Pack.) (Two-lined Hooktip) – 12B-VII-2003 2.

GEOMETRIDAE – Inchworm or Geometrid Moths

6270. *Protitame virginalis* (Hulst) (Virgin Moth) – 20-VI-2001 1, 19-VI-2004 3, 18-VII-2004 2, 21-VI-2005 3 and 12-VI-2006 1.
 6272. *Eumacaria latiferrugata* (Wlk.) (Brown-bordered Geometer) – 2-VII-1999 SR and 8-VI-2001 1.
 6279. *Macaria (Itame) occiduaria* (Pack.) (Western Sulphur) – 18-VII-2004 1, 21-VI-2005 1 and 2B-VIII-2005 1.
 6290. *Macaria (Itame) loricaria* (Evers.) (False Bruce Spanworm) – 18-VII-2004 2, 12A-VI-2006 1 and 12C-VI-2006 1.
 6304. *Macaria (Itame) bitactata* (Wlk.) – 20/21-VI-2001 (EM), 15-VIII-2004 2 and 2B-VIII-2005 2.
 6344. *Macaria (Semiothisa) signaria* (Hbn.) (Pale-marked Angle) – 19-VI-2004 3 and 21-VI-2005 3.
 6373. *Digrammia (Semiothisa) denticulata* Grt. (Striped Granite) - 8-VI-2001 2, 4-VI-2002 2, 27-VI-2002 1, 10-IX-2002 2, 25B-VI-2003 1, 25C-VI-2003 2, 18-VII-2004 1 and 21-VI-2005 2.
 6380. *Digrammia (Semiothisa) californiaria* (Pack.) – 19-VI-2004 1, 27B-VIII-2006 2 and 27C-VIII-2006 1.
 6394. *Digrammia rippertaria* (Dup.) (*Semiothisa hebetata*) – 20/21-VI-2001 (EM).
 6396. *Digrammia (Semiothisa) neptaria* (Gn.) – 4-VI-2002 3, 27-VI-2002 1 and 10-IX-2002 1.
 6431. *Hesperumia sulphuraria* Pack. (Sulphur Moth) – 18-VII-2004 3.
 6598. *Protoboarmia porcelaria* (Gn.) (Speckled Carpet) – 18-VII-2004 1.
 6640. *Biston betularia* (L.) (Salt and Pepper Moth) – 20-VI-2001 1.
 6654. *Hypagyrtis unipunctata* (Haw.) (One-spotted Variant) – 20/21-VI-2001 (EM) and 12-VII-2002 1.
 6666. *Lomographa semiclarata* (Wlk.) (Bluish Spring Moth) – 8-VI-2001 1, 16A-V-2006 1 and 16V-2006 2.
 6677. *Cabera erythemaria* Gn. (Yellow-dusted Cream Moth) – 27-VI-2002 2, 12-VII-2002 2 and 21-VI-2005 1.

6678. *Cabera variolaria* Gn. (The Vestal or The Pink-striped Spanworm Moth) – 20-VI-2001 2, 12-VII-2002 2 and 21-VI-2005 1.
6715. *Aspitates aberratus* (Hy. Edw.) – 2-VII-1999 SR, 2-VII-2000 2, 8-VI-2001 3, 20-VI-2001 2, 4-VI-2002 1, 27-VI-2002 1, 25A-VI-2003 2, 25B-VI-2003 1, 25C-VI-2003 1, 12B-VII-2003 1, 19-VI-2004 1, 18-VII-2004 1, 12A-VI-2006 1, 12B-VI-2006 1 and 12C-VI-2006 1.
6726. *Euchlaena obtusaria* (Hdn.) (Obtuse *Euchlaena*) – 12-VII-2002 1 and 12A-VI-2006 1.
6729. *Euchlaena johnsonaria* (Fitch) (Johnson's *Euchlaena*) – 12-VII-2002 2, 12B-VII-2003 1 and 18-VII-2004 1.
6731. *Euchlaena madusaria* (Wlk.) – 12B-VII-2003 1, 19-VI-2004 1, 18-VII-2004 1 and 21-VI-2005 1.
6734. *Euchlaena marginaria* (Minot (Alberta Thorn)) – 8-VI-2001 1 and 16B-V-2006 1.
6737. *Euchlaena tigrinaria* (Gn.) (Variable Thorn or Mottled *Euchlaena*) – 20/21-VI-2001 (EM) and 12A-VI-2006 1.
6743. *Xanthotype sospeta* (Drury) – 21-VI-2005 1.
6755. *Pero morrisonaria* (Hy. Edw. (Lesser UMBER or Morrison's *Pero*)) – 20-VI-2001 1, 4-VI-2002 1, 27-VI-2002 1, 19-VI-2004 3 and 12A-VI-2006 1.
6797. *Ennomos magnaria* Gn. (Maple Spanworm Moth) – 1-IX-2001 1, 10-IX-2002 1 and 24-IX-2004 1.
6819. *Metanema inatomaria* Gn. ((Pale *Metanema*)) – 20-VI-2001 1.
6820. *Metanema determinata* (Wlk.) (Dark-banded Thorn) – 20-VI-2001 1.
6822. *Metarranthis duaria* (Gn.) (Canadian Thorn or Ruddy *Metarranthis*) – 4-VI-2002 1 and 16B-V-2006 1.
6837. *Probole alienaria* (H.-S.) – 20VI-2001 1, 19-VI-2004 1.
6838. *Probole amicaria* (H.-S.) (Sharp-toothed Thorn or Friendly *Probole*) – 18-VII-2004 1.
6842. *Plagodis phlogosaria* (Gn.) (Straight-lined *Plagodis*) – 16B-V-2006 1.
6912. *Sicya macularia* (Harr.) (Pink-bordered Yellow) – 18-VII-2004 1.
6926. *Plataea trilinearia* (Pack.) (Sagebrush Girdle) – 8-VI-2001 8, 20-VI-2001 2, 27-VI-2002 1, 12-VII-2002 1, 12B-VII-2003 1, 18-VII-2004 1, 21-VI-2005 2, 12A-VI-2006 1, 12B-VI-2006 1 and 12C-VI-2006 1.
6982. *Prochoerodes transversata* (Drury) (Large Maple Spanworm Moth) – 10-IX-2002 2, 15-VIII-2004 3 and 6A-VIII-2006 1.
7018. *Nemoria unitaria* (Pack.) – 13-VII-2002 1.
7058. *Synchlora aerata* (F.) (Wavy lined Emerald) – 12-VII-2002 6 and 27C-VIII-2006 2.
7065. *Chaetoscelis bistriaria* (Pack.) (Red-fringed Emerald) - 12B-VII-2003 1 and 18-VII-2004 2.
7125. *Idea rotundopennata* (Pack.) (Round-winged Wave) – 19-VI-2004 3.
7159. *Scopula limboundata* (Haw.) (Large Lace-border) – 18-VII-2004 2.
7164. *Scopula junctaria* (Wlk.) (United Wave) – 12-VII-2002 2 and 18-VII-2004 2.
7166. *Scopula frigidaria* Mös. (Frigid Wave) – 12B-VII-2003 1 and 19-VI-2004 1.
7169. *Scopula inductata* (Gn.) (Soft-lined Wave) – 27-VI-2002 2, 12B-VII-2003 1, 18-VII-2004 1, 21-VI-2005 2, 12C-VI-2006 1, 27A-VIII-2006 1, 27B-VIII-2006 1 and 27C-VIII-2006 1.
7172. *Scopula sentinaria* (Gey.) – 2-VII-2000 1 and 12-VI-2006 1.

7180. *Leptostales ferruminaria* (Zell.) – 4-VI-2002 1.
 7182. *Dysstroma citrata* (L.) (Dark Marbled Carpet) – 28A-VIII-2005 1 and 6A-VIII-2006 1.
 7189. *Dysstroma hersiliata* (Gn.) (Orange-barred Carpet) – 20-VI-2001 1, 18-VII-2004 1.
 7199. *Eulithis propulsata* (Wlk.) – (Barred Yellow or Currant Eulithis) – 18-VII-2004 1.
 7207. *Eulithis xyliina* (Hulst) (The Phoenix) – 18-VII-2004 3.
 7219. *Thera otisi* (Dyar) (Dyar's Carpet) – 8-VIII-2001 EM, 10-IX-2002 1, 15-VIII-2004 6, 28-VIII-2004 2, 24-IX-2004 1, 2B-VIII-2005 1, 28A-VIII-2005 6, 6A-VIII-2006 2, 6B-VIII-2006 1 and 27B-VIII-2006 2.
 7254. *Hydriomena ruberata* (Frey.) – 19-VI-2004 1.
 7257. *Hydriomena furcata* (Thunb.) – 2B-VIII-2005 2.
 7307. *Mesoleuca ruficillata* (Gn.) (Red-fringed Carpet) – 27-V-2004 1.
 7316. *Perizoma basaliata* (Wlk.) (Twin-spot Wave) – 12A-VI-2006 1.
 7328. *Perizoma custodiata* (Gn.) – 8-VI-2001 4, 4-VI-2002 2, 25C-VI-2003 1, 21-VI-2005 2, 16A-V-2006 1, 12B-VI-2006 1, 6B-VIII-2006 1, 27A-VIII-2006 1, 27B-VIII-2006 1 and 27C-VIII-2006 1.
 7370. *Xanthorhoe abrasaria* (H.-S.) – 18-VII-2004 1.
 7394. *Epirrhoe alternata* (Müller) – 21-VI-2005 1, 12A-VI-2006 1 and 12C-VI-2006 1.
 7408. *Zenophleps alpinata* Cass. – 10-IX-2002 1, 15-VIII-2004 1, 28N-VIII-2004 1 (4 SR), 2B-VIII-2005 2, 28A-VIII-2005 1, 6A-VIII-2006 1, 27A-VIII-2006 1 and 27B-VIII-2006 1.
 7440. *Eubaphe mendica* (Wlk.) (The Beggar) – 12-VII-2002 1.
 7445. *Horisme intestinata* (Gn.) (Many-lined Pug) – 20-VI-2001 2.
 7446. *Horisme incana* Swett – 20-VI-2001 2, 27-VI-2002 1, 12-VII-2002 1, 25C-VI-2003 2, 16B-V-2006 1, 12-VI-2006 1, 12B-VI-2006 1 and 12C-VI-2006 1.
 7449-7605. *Eupithecia* spp. – 15-VIII-2004 1, 12A-VI-2006 2, 12B-VI-2006 1, 12C-VI-2006 1. These are presently being identified by Dr. George Balogh.
 7483. *Eupithecia regina* Tayl. – 20-VI-2001 2 and 21-VI-2005 1.
 7487. *Eupithecia subfuscata* (Haw.) – 20-VI-2001 1, 27-VI-2002 1 and 19-VI-2004 1.
 7522. *Eupithecia nimbicolor* (Hulst) – 8-VI-2001 1.
 7524. *Eupithecia cimicifugata* Pears. – 21-VI-2005 1.
 7539. *Eupithecia multistrigata* (Hulst) – 10-IX-2002 1.
 7548. *Eupithecia lachrymosa* (Hulst) – 20-VI-2001 1, 19-VI-2004 1 and 21-VI-2005.
 7551a. *Eupithecia interruptofasciata* Pack. – 1-IX-2001 2, 10-IX-2002 1, 24-IX-2004, 28-VIII-2005 6, 27A-VIII-2006 3, 27B-VIII-2006 1 and 27C-VIII-2006 1.
 7575. *Eupithecia mutata* Pears. – 20-VI-2001 1 and 19-VI-2004 1.
 7605. *Eupithecia ravocostaliata* Pack. (Great Variegated Pug) – 16B-V-2006 1.
 7640. *Lobophora nivigerata* Wlk. (Two-lined Aspen Looper) – 25C-VI-2003 1.

LASIOCAMPIDAE – Tent Caterpillar or Lappet Moths

7687. *Phyllodesma americana* (Harr.) (Lappet Moth) – 17-VI-2002 1, 21A-V-2003 1 and 12A-VI-2006 1.
 7698. *Malacosoma dissτρια* Hbn. (Forest Tent Caterpillar) – 12-VII-2002 1, 12B-VII-2003 1 and 18-VII-2004 1.
 7702. *Malacosoma californicum* (Pack.) (Western Tent Caterpillar) – 18-VII-2004 1.

SATURNIDAE – Giant Silk Moths

7757. *Antheraea polyphemus* (Cram.) (Polyphemus Moth) – 8/9-VI-2001 (EM).

SPHINGIDAE – Sphinx Moths

7803. *Sphinx vashti* Stkr. (Vashti or Snowberry Sphinx) – 20-VI-2001 1, 4-VI-2002 10 SR, 27-VI-2002 1, 25B-VI-2003 1 and 19-VI-2004 1.
7812. *Sphinx drupiferarum* J. E. Smith (Wild Cherry Sphinx) – 27-VI-2002 1. Seldom encountered in Alberta. Known from Red Deer (1916) and Tolman Bridge (Gary Anweiler, 14/15-VI-2002). Similar to *Smerinthus cerisyi* but darker and larger (the wingspan on the above specimen being 92 mm).
7821. *Smerinthus jamaicensis* (Drury) (Twin-spot Sphinx) – 20-VI-2001 1, 12-VII-2002 2 SR and 12C-VI-2006 2.
7822. *Smerinthus cerisyi* Kby. (One-eyed Sphinx) – 20-VI-2001 1, 4-VI-2002 15 SR, 12-VII-2002 10 SR and 19-VI-2004 1.
7824. *Paonias excaecatus* (J. E. Smith) (Blinded Sphinx) – 8/9-VI-2001 (EM), 27-VI-2002 1, 12-VII-2002 1 SR, 12A-VI-2006 1 and 12B-VI-2006 1.
7825. *Paonias myops* (J. E. Smith) (Small-eyed Sphinx) – 8/9-VI-2001 (EM), 12-VII-2002 2 SR, 25C-VI-2003 1 and 12C-VI-2006 1.
7828. *Pachysphinx modesta* (Harr.) (Large Poplar Sphinx) – 8/9-VI-2001 (EM).
7893. *Hyles gallii* (Rottemburg) (Galium Sphinx or Bedtraw Hawkmoth) – 25C-VI-2003 1, 21-VI-2005 1 and 12C-VI-2006 1.

NOTODONTIDAE – Prominent Moths

7895. *Clostera albosigma* Fitch (Sigmoid Prominent or Rusty-lined Leaf-tier Moth) – 8-VIII-2001 1 and 22B-IV-2005 1.
7898. *Clostera strigosa* (Grt.) (Striped Chocolate-tip) – 4-VI-2002 1 and 27-VI-2002 1.
7900. *Clostera brucei* (Hy. Edw.) (Bruce's Chocolate-tip) – 21A-V-2003 1.
7901. *Clostera apicalis* (Wlk.) (Common Chocolate-tip or Red-marked Tentmaker Moth) – 4-VI-2002 1 and 12-VI-2002 1.
7915. *Nadata gibbosa* (J. E. Smith) (White-dotted Prominent or Yellow-lined Caterpillar Moth) – 27-VI-2002 1, 12-VII-2002 1, 19-VI-2004 6 (25 SR), 18-VII-2004 2, 21-VI-2005 1 and 12A-VI-2006 1.
7922. *Pheosia rimosa* Pack. (Black-rimmed Prominent) – 18-VII-2004 1.
7924. *Odontosia elegans* (Stkr.) (Elegant Prominent) – 20/21-VI-2001 (EM) and 12-VII-2002 1.
7926. *Notodonta scitipennis* Wlk.) (Base-streaked Prominent) – 20/21-VI-2001 (EM) and 18-VII-2004 1.
7928. *Notodonta simplaria* Graef – 21-VI-2005 2 and 12C-VI-2006 1.
7931. *Gluphisia septentrionis* (Wlk.) (Small Pebble) – 8-VI-2001 1, 20-VI-2001 2, 27-VI-2002 1, 12-VII-2002 1 SR, 16B-V-2006 1 and 12A-VI-2006 1.
7934. *Gluphisia lintneri* (Grt.) – 22B-IV-2005 1.
7939. *Furcula occidentalis* (Lint.) (Willow Kitten) – 12B-VII-2003 1.

7941. *Furcula modesta* (Huds.) (Modest Kitten) – 4-VI-2002 1.
 8007. *Schizura unicornis* (J. E. Smith) (Variegated Prominent or Unicorn Caterpillar Moth) – 20-VI-2001 3, 27-VI-2002 1 and 19-VI-2004 1.

ARCTIIDAE – Tiger Moths and others

8043. *Eilema bicolor* (Grt.) (Yellow-edged Footman or Bicolored Moth) – 21-VIII-2002 1, 10-IX-2002 2, 18-VII-2004 1, 15-VIII-2004 1, 28-VIII-2004 1 and 28A-VIII-2005 2.
 8051. *Crambidia casta* (Pack.) (Pearly-winged Lichen Moth) – 1-IX-2001 3, 21-VIII-2002 3, 10-IX-2002 3, 21-VIII-2003 1, 15-VIII-2004 2, 28-VIII-2004 1, 28A-VIII-2005 3, 6B-VIII-2006 1, 27A-VIII-2006 1, 27B-VIII-2006 1 and 27C-VIII-2006 1.
 8089. *Hypoprepia miniata* (Kby.) (Scarlet-winged Lichen Moth) – 12-VII-2002 2, 12B-VII-2003 1 and 18-VII-2004 3.
 8098. *Clemensia albata* Pack. (Little White Lichen Moth) – 18-VII-2004 2.
 8123. *Holomelina ferruginosa* (Wlk.) (Rusty Holomelina or Spotted Salmon Tiger Moth) – 12-VII-2002 1, 18-VII-2004 3 and 15-VIII-2004 1.
 8129. *Pyrrharctia isabella* (J. E. Smith) – 20-VI-2001 2, 27-VI-2002 1 and 12-VII-2002 2.
 8131. *Estigmene acraea* (Drury) – 20-VI-2001 1.
 8134. *Hyphantria congrua* (Wlk.) – 8-VI-2001 1, 20-VI-2001 2, 21-VI-2005 2 and 12A-VI-2006 1.
 8136. *Spilosoma dubia* (Wlk.) – 8/9-VI-2001 (EM).
 8137. *Spilosoma virginica* (F.) (Virginian Tiger Moth, Red-marked Tentmaker or Yellow Woolly Bear) – 20/21-VI-2001 (EM) and 18-VII-2004 1.
 8144. *Hypercompe permaculata* (Pack.) – 8-VI-2001 3, 20-VI-2001 1, 27-VI-2002 1, 12-VII-2002 2, 25B-VI-2003 1, 25C-VI-2003 2, 12B-VII-2003 2, 18-VII-2004 1, 15-VIII-2004 2, 21-VI-2005 1, 2A-VIII-2005 1, 12B-VI-2006 1 and 12C-VI-2006 1.
 8158. *Phragmatobia assimilans* (Wlk.) (Large Ruby Tiger Moth) – 4-VI-2002 2 and 16B-V-2006 1.
 8162. *Platarctia parthenos* (Harr.) (St. Lawrence Tiger Moth) – 19-VI-2004 1.
 8186. *Grammia williamsii* (Dodge) – 20-VI-2001 2, 27-VI-2002 2, 12-VII-2002 2, 25B-VI-2003 1, 25C-VI-2003 1, 12B-VII-2003 1, 18-VII-2004 1, 21-VI-2005 3 and 12C-VI-2006 1.
 8196. *Grammia parthenice* (W. Kirby) (Parthenice Tiger Moth) – 12A-VII-2003 1, 12B-VII-2003 1, 18-VII-2004 2, 15-VIII-2004 2 and 2B-VIII-2005 1.
 8197. *Grammia virgo* (L.) (Virgin Tiger Moth) – 20-VI-2001 2, 12-VII-2002 1 and 18-VII-2004 1.
 8214. *Lophocampa maculata* Harr. (Spotted Tussock Moth) – 27-VI-2002 1.
 8262. *Ctenucha virginica* (Esp.) (Virginia Ctenucha) – 2-VII-1999 SR and 2-VII-2001 1.

LYMANTRIIDAE – Tussock Moths

8294. *Dasychira vagans* (B. & McD.) (Variable Tussock Moth) – 20-VI-2001 1, 12-VII-2002 1 and 25C-VI-2003 1.
 8304. *Dasychira plagiata* (Wlk.) (Northern Conifer Tussock Moth) – 18-VII-2004 1.

NOCTUIDAE – Owlets or Noctuid Moths

8322. *Idia americalis* (Gn.) (American Snout Moth) – 20-VI-2001 2, 8-VIII-2001 2, 19-VI-2004 1, 18-VII-2004 1, 15-VIII-2004 1, 28A-VIII-2005 1, 12A-VI-2006 1, 12C-VI-2006 1, 6A-VIII-2006 1 and 27C-VIII-2006 1.
8323. *Idia aemula* Hbn. (Powdered Snout) – 18-VII-2004 1.
8334. *Idia lubricalis* (Gey.) (Glossy Black Idia) – 10-IX-2002 2, 18-VII-2004 1 and 15-VIII-2004 1.
8354. *Zanclognatha lotalba* (Sm.) (The Canadian Zanclognatha) – 18-VII-2004 3.
8356. *Chytolita petrealis* Grt. (Lesser Luteous Snout) – 19-VI-2004 4 and 21-VI-2005 1.
8362. *Phalaenostola metonalis* (Wlk.) (Pale Phalaenostola or Tufted Snout) – 12-VII-2002 1.
8365. *Phalaenostola hanhami* (Sm.) (Hanham's Snout Moth) – 18-VII-2004 1.
8370. *Bleptina caradrinalis* Gn. (Bent-winged Owlet) – 27-VI-2002 2, 25C-VI-2003 4, 18-VII-2004 1, 21-VI-2005 1 and 12A-VI-2006 1.
8397. *Palthis angulalis* (Hbn.) (Angulated Snout Moth) – 19-VI-2004 1.
8421. *Hypenodes fractilinea* (Sm.) (Broken-line Hypenodes) – 18-VII-2004 1.
8461. *Hypena humuli* Harr. – 22A-IV-2005 1, 22B-IV-2005 2 and 28A-VIII-2005 1.
8555. *Scoliopteryx libatrix* (L.) (The Herald) – 12A-VI-2006 1.
8632. *Drasteria hudsonica* (G. & R.) (Northern Arches) – 8-VI-2001 2, 20-VI-2001 2, 27-VI-2002 1, 25C-VI-2003 1, 21-VI-2005 1 and 12C-VI-2006 1.
8635. *Drasteria perplexa* (Hy. Edw.) (Perplexing Arches) – 18-VII-2004 1, 21-VI-2005 1, 16A-V-2006 1 and 12B-V-2006 1.
8636. *Drasteria adumbrata* (Behr) – 12-VII-2002 1.
8697. *Zale minerea* (Gn.) (Colorful Zale) – 16B-V-2006 2.
8731. *Euclidea cuspeida* (Hbn.) (Pointed Grass Moth) – 16B-V-2006 1 and 12-VI-2006 1.
8738. *Caenurgina crassiuscula* (Haw.) (Clover Looper Moth) – 8-VI-2001 1, 4-VI-2002 1, 27-VI-2002 2, 12-VII-2002 1, 12B-VII-2003 1, 16B-V-2006 1 and 12C-VI-2006 1.
8739. *Caenurgina erechtea* (Cram.) (Forage Looper Moth) – 28A-VIII-2005 1 and 16-VII-2006 1.
8803. *Catocala relictata* Wlk. (White Underwing) – 8-VIII-2001 1, 21-VIII-2002 1, 10-IX-2002 1 and 15-VIII-2004 1 and 27A-VIII-2006 1.
8805. *Catocala unijuga* (Wlk.) (Once-married Underwing) – 8-VIII-2001 1, 15-VIII-2004 1, 6A-VIII-2006 1 and 27B-VIII-2006 1.
8812. *Catocala hermia* Hy. Edw. (Hermia Underwing) – 15-VIII-2004 1.
8817. *Catocala briseis* Edw. (Briseis Underwing) – 8-VIII-2001 1 and EM, 21-VIII-2002 1.
8821. *Catocala semirelictata* Grt. (Semirelict Underwing) – 10-IX-2002 1.
8867. *Catocala blandula* Hulst (Charming Underwing) – 24-IX-2004 1.
8914. *Autographa californica* (Speyer) (Alfalfa Looper Moth) – 8-VIII-2001 EM, 1-IX-2001 2, 24-IX-2004 1, 22A-IV-2005 1 and 6B-VIII-2006 1.
8924. *Anagrapha falcifera* (Kby.) (Celery Looper Moth) – 27-VI-2002 1, 25B-VI-2003 1, 25C-VI-2003 1, 21-VI-2005 1 and 28A-VIII-2005 1.

8926. *Syngrapha octoscripta* (Grt.) – 10-IX-2002 1.
9048. *Lithacodia albidula* (Gn.) (Common Midget) – 8-VI-2001 2, 20-VI-2001 1 and 12A-VI-2006 1.
9053. *Pseudostrotia carneola* (Gn.) (Pink-barred Lithacodia) – 20/21-VI-2001 EM, 27-VI-2002 3, 10-IX-2002 1, 19-VI-2004 1 and 21-VI-2005 1.
9066. *Leuconycta lepidula* (Grt.) (Brown Leuconycta) – 20/21-VI-2001 EM.
9101. *Tarachidia tortricina* (Zell.) (Olive-shaded Bird-dropping Moth) – 20/21-VI-2001 EM, 27-VI-2002 4, 12-VII-2002 1, 12B-VII-2003 2, 18-VII-2004 1, 15-VIII-2004 2, 21-VI-2005 1 and 12-VI-2006 1.
9110. *Conochares arizonae* (Hy. Edw.) (Arizona Bird-dropping Moth) – 8-VI-2001 6, 20-VI-2001 1 and EM, 8-VIII-2001 EM, 4-VI-2002 1, 27-VI-2002 3, 12-VII-2002 1, 25C-VI-2003 1, 12B-VII-2003 1, 19-VI-2004 1, 18-VII-2004 1 and 12B-VI-2006 2.
9112. *Theresea flavicosta* (Sm.) (Narrow-winged Midget) – 20-VI-2001 1, 25A-VI-2003 1, 25C-VI-2003 1, 19-VI-2004 2, 18-VII-2004 2 and 16A-V-2006 1.
9177. *Panthea acronyctoides* (Wlk.) (Black Zigzag) – 18-VII-2004 2.
9193. *Raphia frater* Grt. (The Brother) – 20-VI-2001 2 and EM, 27-VI-2002 1, 12B-VII-2003 1, 19-VI-2004 1, 21-VI-2005 1 and 12A-VI-2006 1.
9209. *Acronicta radcliffei* (Harr.) (Radcliff's Dagger Moth) – 16A-V-2006 1. This species has been rarely collected in Alberta. An early record is from Red Deer.
9212. *Acronicta grisea* (Wlk.) (Gray Dagger Moth) – 16B-V-2006 1.
9224. *Acronicta quadrata* Grt. – 18-VII-2004 1.
9226. *Acronicta superans* Gn. – 21-VI-2005 1.
9229. *Acronicta hasta* Gn. (Speared Dagger Moth) – 27-VI-2002 1.
9241. *Acronicta fragilis* (Gn.) (Fragile Dagger Moth) – 20-VI-2001 1, 19-VI-2004 2 and 16B-V-2006 1.
9257. *Acronicta impleta* Wlk. (Yellow-haired Dagger Moth) – 4-VI-2002 EM OLDS.
9261. *Acronicta impressa* Wlk. (Willow Dagger Moth) – 18-VII-2004 1.
9284. *Agriopodes teratophora* (H.-S.) (Gray Marvel) – 20-VI-2001 2 and EM.
9286. *Harrisimemna trisignata* (Wlk.) (Harris's Three-spot) – 20-VI-2001 1.
9341. *Apamea vultuosa* (Grt.) (Narrow-bordered Quaker of Airy Quaker) – 12C-VI-2006 1.
9348. *Apamea amputatrix* (Fitch) (Northern Quaker or Yellow-headed Cutworm Moth) – 4/5-VII-2001 EM and 12-VII-2002 3.
9351. *Apamea alia* (Gn.) (Dewy Quaker) – 12A-VI-2006 1.
9359. *Apamea commoda* (Wlk.) (Gray Quaker) – 12-VII-2002 2, 19-VI-2004 2, 18-VII-2004 2 and 21-VI-2005 1.
9364. *Apamea sordens* (Hufn.) (*A. finitima*) (Bordered Apamea) – 12C-VI-2006 1.
9365. *Apamea scoparia* Mikkola, Mustelin & Laf. (Red-winged Quaker) – 20-VI-2001 2, 8-VIII-2001 1, 25B-VI-2003 1, 25C-VI-2003 1 and 12B-VII-2003 1.
9369. *Apamea inficita* (Wlk.) (Inficita Quaker) – 8-VIII-2001 1, 12-VII-2002 1, 18-VII-2004 1 and 5-VIII-2004 1.
9374. *Apamea niveivenosa* (Grt.) – 21-VIII-2005 1.
9382. *Apamea devastator* (Brace) (Glassy Cutworm Moth) – 10-IX-2002 1, 25C-VI-2003 2, 12B-VII-2003 1, 18-VII-2004 2, 15-VIII-2004 3, 21-VI-2005 2, 2A-VIII-2005

- 1, 2B-VIII-2005 1, 28A-VIII-2005 2, 12A-VI-2006 1, 12C-VI-2006 1, 6A-VIII-2006 1 and 6C-VIII-2006 1.
9383. *Apamea longula* (Grt.) (Mountain Quaker) – 4/5-VII-2001 EM, 2A-VIII-2005 2 and 2B-VIII-2005 2.
9396. *Eremobina claudens* (Wlk.) – 28A-VIII-2005 1.
9417. *Oligia egens* (Wlk.) (Neomogen's Quaker) – 1-IX-2001 1.
9419. *Oligia mactata* (Gn.) – 28A-VIII-2005 2, 27A-VIII-2006 1, 27B-VIII-2006 1 and 27C-VIII-2006 1.
9420. *Oligia illocata* (Wlk.) (Wandering Quaker) – 19-VI-2004 1, 28-VIII-2004 1 and 28A-VIII-2005 1.
9434. *Spartiniphaga includens* (Wlk.) (Silver-C Borer) – 2-IX-2004 1 and 28A-VIII-2005 1.
9440. *Chortodes rufostrigata* (Pack.) (Brown-streaked Rustic) – 12-VII-2002 1 and 18-VII-2004 1.
9457. *Amphipoea americana* (Speyer) (American Ear Moth) – 8-VIII-2001 EM, 1-IX-2001 1, 21-VIII-2002 2, 10-IX-2002 1 and 28A-VIII-2005 1.
9525. *Bellura obliqua* (Wlk.) (Cattail Borer Moth) – 8-VIII-2001 EM.
9543. *Aseptis characta* (Grt.) – 12-VII-2002 1 and 18-VII-2004 1.
9549. *Enargia decolor* (Wlk.) (Angle-striped Sallow) – 1-IX-2001 1, 28B-VIII-2004 6 SR, 24N-IX-2004 1 (9 SR), 28A-VIII-2005 2, 6A-VIII-2006 1, 27A-VIII-2006 1, 27B-VIII-2006 1 and 27C-VIII-2006 1.
9550. *Enargia infumata* (Gret.) (Lesser Angle-striped Sallow) – 18-VII-2004 3, 15-VIII-2004 2, 2A-VIII-2005 1 and 28A-VIII-2005 3.
9555. *Ipimorpha pleonectusa* Grt. (Even-lined Sallow) – 15-VIII-2004 1, 2B-VIII-2005 1 and 27A-VIII-2006 1.
9556. *Chytonix palliatricula* (Gn.) (Cloakes Marvel) – 19-VI-2004 1.
9564. *Andropolia contacta* (Wlk.) (Canadian Giant) – 15-VIII-2004 1, 2A-VIII-2005 1, 2B-VIII-2005 1 and 6A-VIII-2006 1.
9647. *Proxenus miranda* (Grt.) (Glistening Rustic) – 8-VI-2001 4, 20-VI-2001 5 and EM, 27-VI-2002 1, 25C-VI-2003 2 and 12C-VI-2006 1.
9649. *Proxenus mendosa* McD. – 8-VIII-2001 1.
9654. *Platyperigea meralis* (Morr.) – 2A-VIII-2005 1.
9656. *Platyperigea montana* (Bremer) (*P. extima*) (Civil Rustic) – 20-VI-2001 1, 8-VIII-2001 1, 12-VII-2002 2 SR, 10-IX-2002 1, 25C-VI-2003 1, 28N-VIII-2004 1 (2 SR), 28S-VIII-2004 3 SR, 24S-IX-2004 3 SR, 24N-IX-2004 2 SR, 2A-VIII-2005 1, 28A-VIII-2005 1, 27A-VIII-2006 1 and 27B-VIII-2006 1.
9681. *Elaphria festivoides* (Gn.) (Festive Midget) – 20-VI-2001 1 and EM, 19-VI-2004 2 and 12A-VI-2006 1.
9873. *Xylena nupera* (Lint.) (American Swordgrass) – 27-VI-2002 1.
9874. *Xylena curvimacula* (Morr.) (Dot-and-Dash Swordgrass Moth) – 24-IX-2004 1.
9878. *Lithomoia germana* (Morr.) (American Peasant) – 27C-VIII-2006 1.
9884. *Litholomia napaea* (Morr.) (Dark Gray Peasant) – 1-IX-2001 1, 24N-IX-2004 1 (3 SR), 24S-IX-2004 3 SR, 22A-IV-2005 1 and 22B-IV-2005 1.
9909. *Lithophane tepida* Grt. (Dowdy Pinion) – 27A-VIII-2006 1.
9913. *Lithophane georgii* Grt. (Large Grey Pinion) – 16B-V-2006 1.

9952. *Eucirroedia pampina* (Gn.) (Spotted Sallow) – 1-IX-2001 1, 24-IX-2004 1 and 28A-VIII-2005 1, 27A-VIII-2006 2, 27B-VIII-2006 1.
9962. *Anathix puta* (Grt. & Rob.) (Putta Sallow) – 1-IX-2001 2, 10-IX-2002 1, 15-VIII-2004 1, 28-VIII-2004 1 and 28A-VIII-2005 1.
9965. *Xanthia tatago* Laf. & Mik. (Pink-barred Sallow) – 10-IX-2002 1.
9987. *Mniotype ducta* (Grt.) – 25C-VI-2003 1.
9993. *Brachylomia populi* (Stkr.) (Cloaked Peasant) – 1-IX-2001 2.
9988. *Brachylomia algens* (Grt.) ((Willow Peasant) – 1-IX-2001 1.
9999. *Brachylomia discinigra* (Wlk.) (Black-disked Peasant) – 27A-VIII-2006 1.
10028. *Pleromelloida obliquata* (Sm.) – 22A-IV-2005 1 and 22B-IV-2005 1.
10035. *Noctua pronuba* (B. & McD.) (Large Yellow Underwing) – 6A-VIII-2006 1 and 27A-VIII-2006 2.
10055. *Apharetra dentata* (Grt.) – 2B-VIII-2005 1.
10059. *Homohadena badistriga* (Grt.) – 2A-VIII-2005 1.
10062. *Homohadena stabilis* Sm. (Brown Sallow) – 8-VIII-2001 1, 18-VII-2004 1.
10065. *Homohadena infixa* (Wlk.) (Broad-lined Sallow) – 12-VII-2002 2 and 28-VIII-2004 1.
10124. *Oncocnemis cibalis* Grt. (Delicate Beauty) – 1-IX-2001 EM, 10-IX-2002 3 and 24-IX-2004 1.
- 10130.1. *Oncocnemis pallidior* (Barnes) – 20-VI-2001 1 and EM, 17-VI-2002 1, 10-IX-2002 1, 25B-VI-2003 1, 25C-VI-2003 2, 18-VII-2004 2 and 21-VI-2005 1.
10143. *Oncocnemis mackiei* B. & Benj. (Mackie's Beauty) – 1-IX-2001 11 and EM, 10-IX-2002 4, 24-IX-2004 3, 28A-VIII-2005 2, 27A-VIII-2006 1, 27B-VIII-2006 1 and 27C-VIII-2006 1.
10194. *Cucullia intermedia* Speyer (Intermediate Falconer or Goldenrod Cutworm Moth) – 8-VI-2001 1 and 16B-V-2006 1.
- 10228c. *Discestra oregonica montanica* McD. – 4-VI-2002 2 and 25C-VI-2003 1.
10232. *Discestra farnhami* (Grt.) (Farnham's Discestra) – 3-VI-2002 3.
10233. *Discestra crotchi* (Grt.) – 4-VII-2002 1.
10238. *Scotogramma submarina* (Grt.) – 4-VI-2002 6, 17-VI-2002 2, 19-VI-2004 1, 18-VII-2004 1 and 21-VI-2005 1, 16A-V-2006 1, 16B-V-2006 3 and 12A-VI-2006 1.
10265. *Sideridis rosea* (Harv.) (The Rosywing) – 8-VI-2001 2, 4-VI-2002 3, 27-VI-2002 1, 16A-V-2006 1, 12B-VI-2006 1 and 12C-VI-2006 1.
10271. *Mamestra configurata* Wlk. (Bertha Armyworm Moth) – 4/5-VII-2001 EM, 12-VII-2002 1, 18-VII-2004 1 and 2A-VIII-2005 1.
10273. *Polia discalis* (Grt.) (Large Gray Polia) – 18-VII-2004 2.
10275. *Polia nimbosa* (Gn.) (Stormy Arches) – 20-VI-2001 2 and 12C-VI-2006 1.
10276. *Polia imbrifera* (Gn.) (Cloudy Arches) – 12-VII-2002 1, 21-VI-2005 1 and 12A-VI-2006 1.
10280. *Polia purpurissata* (Grt.) (Purple Arches) – 8-VIII-2001 4, 12-VII-2002 3, 21-VIII-2002 1, 18-VII-2004 2, 15-VIII-2004 2 and 2A-VIII-2005 3.
10281. *Polia nugatis* (Sm.) – 4/5-VII-2001 EM, 8-VIII-2001 1 and EM, 12-VIII-2002 1 and 28-VIII-2004 1.
10288. *Polia detracta* (Wlk.) (Dingy Arches) – 20-VI-2001 5, 4-VI-2002 1, 27-VI-2002 2, 25B-VI-2003 1, 25C-VI-2003 3, 19-VI-2004 3, 21-VI-2005 2, 12A-VI-2006 2 and 12C-VI-2006 2.

10289. *Polia goodelli* (Grt.) (Goodell's Arches) – 8-VI-2001 1.
10290. *Polia obscura* (Sm.) (Obscure Arches) – 8-VI-2001 2.
10298. *Lacanobia radix* (Wlk.) (Garden Arches) – 4-VI-2002 1, 12-VII-2002 1, 16A-V-2006 1, 16B-V-2006 1, 12A-VI-2006 1 and 12C-VI-2006 1.
10299. *Lacanobia subjuncta* (G. & R.) (Harnessed Arches) – 12C-VI-2006 1.
10300. *Spirameter grandis* (Gn.) (Pale-banded Arches) – 20-VI-2001 1.
10305. *Trichordestra dodii* (Sm.) (Dod's Arches) – 8-VI-2001 1, 20-VI-2001 EM, 27-VI-2002 1 and 19-VI-2004 1.
10307. *Lacanobia lilacina* (Harv.) (Lilac Arches) – 4/5-VII-2001 EM, 27-VI-2002 1 and 12B-VII-2003 1.
10308. *Trichordestra liquida* (Grt.) (Liquid Arches) – 8-VI-2001 3, 20-VI-2001 1 and 25C-VI-2003 1.
10310. *Papestra quadrata* (Sm.) (Quadrate Arches) – 4-VI-2002 2 and 16B-V-2006 3.
10322. *Hadena circumvadis* Sm. – 12B-V-2005 1.
10368. *Lacinipolia meditata* (Grt.) (The Thinker) – 4/5-VII-2001 EM.
10370. *Lacinipolia lustralis* (Grt.) (Lustrous Arches) – 20-VI-2001 3 and 12B-VI-2006 1.
10372. *Lacinipolia anguina* (Grt.) (Snaky Arches) – 8-VI-2001 1, 20-VI-2001 1, 4-VI-2002 3, 25B-VI-2003 1, 21-VI-2005 1 and 16B-V-2006 1.
10381. *Lacinipolia naevia* (Sm.) – 8-VI-2001 1, 20-VI-2001 1 and 19-VI-2004 2.
10394. *Lacinipolia vicina* (Grt.) (Small Gray Arches) – 20-VI-2001 1, 4/5-VII-2001 EM, 12-VII-2002 1, 18-VII-2004 2 and 21-VI-2005 1.
10397. *Lacinipolia renigera* (Steph.) (Kidney-spotted Arches or Bristly Cutworm Moth) – 12-VII-2002 1.
10405. *Lacinipolia lorea* (Gn.) (Bridled Arches) – 20-VI-2001 1, 12B-VII-2003 1, 18-VII-2004 1, 21-VI-2005 1 and 12A-VI-2006 1.
10406. *Lacinipolia olivacea* (Morr.) (Olive Arches) – 8-VIII-2001 2.
10428. *Dargida procincta* (Grt.) (The Girdler) – 24-IX-2004 1.
10431. *Faronta diffusa* (Wlk.) (Wheat Head Armyworm Moth) – 20-VI-2001 2 and 25B-VI-2003 1.
10436. *Aletia oxygala* (Grt.) (Lesser Wainscot) – 8-VIII-2001 1 and 6C-VIII-2006 1.
10438. *Pseudaletia unipuncta* (Haw.) – 8-VI-2001 EM.
10446. *Leucania multilinea* Wlk. – 2B-VIII-2005 1.
10447. *Leucania commoides* Gn. (Comma Wainscot) – 8-VIII-2001 2, 12-VII-2002 1, 21-VIII-2002 2, 12B-VII-2003 1 and 2A-VIII-2005 1.
10449. *Leucania insueta* Gn. (Heterodox Wainscot) – 8-VI-2001 2 and EM, 20-VI-2001 1, 25C-VI-2003 1 and 12C-VI-2006 1.
10490. *Orthosia revicta* (Morr.) (Subdued Quaker) – 4-VI-2002 1, 22A-IV-2005 1 and 22B-IV-2005 1.
10493. *Orthosia segregata* (Sm.) (Segregate Penman) – 21A-V-2003 2, 22A-IV-2005 3, 22B-IV-2005 1 and 16A-V-2006 1.
10493. *Orthosia segregata* f. *negussa* (Sm.) – 21B-V-2003 1, 22A-IV-2005 1 and 22B-IV-2005 1.
10495. *Orthosia hibisci* (Gn.) – 22A-IV-2005 1 and 22B-IV-2005 1.
10513. *Egira dolosa* (Grt.) (Greiving Woodling or Greater Black-letter Dart) – 22B-IV-2005 1, 16A-V-2006 1 and 16B-V-2006 1.
10523. *Tholera americana* (Sm.) – 27C-VIII-2006 1. At the northern limit of its range.

10524. *Nephelodes minians* Gn. (Bronzed Cutworm Moth) – 4/5-VII-2001 EM, 21-VIII-2002 1, 10-IX-2002 1, 15-VIII-2004 1, 26-VIII-2004 1, 28N-VIII-2004 1 SR, 22A-VIII-2005 2, 6A-VIII-2006 1, 6C-VIII-2006 1, 27A-VIII-2006 1, 27B-VIII-2006 1 and 27C-VIII-2006 1.
10563. *Protorthodes oviduca* (Gn. (Ruddy Quaker) – 4-VI-2002 1, 25C-VI-2003 1 and 16B-V-2006 1.
10645. *Agrotis orthogonia* Morr. – 28A-VIII-2005 1.
10650. *Agrotis robustior* (Sm.) (Robust Dart) – 8-VIII-2001 1, 15-VIII-2004 1, 28A-VIII-2005 2 and 27A-VIII-2006 1.
10651. *Agrotis venerabilis* (Wlk.) (Venerable Dart) – 1-IX-2001 3, 27-VI-2002 1, 21-VIII-2002 1, 10-IX-2002 1, 28-VIII-2004 1, 28A-VIII-2005 2, 27A-VIII-2006 1, 27B-VIII-2006 1 and 27C-VIII-2006 1.
10652. *Agrotis vancouverensis* Grt. (Vancouver Dart) – 8-VI-2000 1, 8-VI-2001 3, 20-VI-2001 2, 27-VI-2002 3, 25B-VI-2003 1, 25C-VI-2003 1, 12B-VII-2003 1, 19-VI-2004 3, 12A-VI-2006 1 and 12C-VI-2006 1.
10660. *Agrotis obliqua* (Sm.) (Oblique Dart) – 16A-V-2006 1 and 16B-V-2006 1.
10670. *Feltia jaculifera* (Gn.) (Dingy Cutworm Moth) – 4/5-VII-2001 EM, 21-VIII-2002 1, 10-IX-2002 1, 15-VIII-2004 1, 2B-VIII-2005 2, 28A-VIII-2005 3, 6C-VIII-2006 1, 27A-VIII-2006 1, 27B-VIII-2006 1 and 27C-VIII-2006 1.
- 10698.2. *Trichosilia mollis* (Wlk.) – 12B-VII-2003 1.
- 10701.1. *Euxoa adumbrata* (Ev.) (Sordid Dart) – 20/21-VI-2001 EM.
- 10701.2. *Euxoa auxiliaris* (Grt.) (Auxiliary Dart) – 4-VI-2002 1, 27-VI-2002 4, 21-VIII-2002 2, 10-IX-2002 2, 25C-VI-2003 4 and 12B-VII-2003 1.
10702. *Euxoa divergens* (Wlk.) (Divergent Dart) – 20-VI-2001 1, 12-VII-2002 2, 25C-VI-2003 3, 12B-VII-2003 1, 19-VI-2004 1 and 18-VII-2004 2.
10705. *Euxoa messoria* (Harr.) (Reaper Dart or Dark-sided Cutworm) – 24-IX-2004 1.
10723. *Euxoa tristicula* (Morr.) (Early Cutworm Moth) – 27-VI-2002 1, 12-VII-2002 2, 12B-VII-2003 1 and 18-VII-2004 2.
10755. *Euxoa declarata* (Wlk.) – 28A-VIII-2005 1.
10756. *Euxoa campestris* (Grt.) (Flat Dart) – 8-VIII-2001 1, 10-IX-2002 2 and 2B-VIII-2005 1.
10769. *Euxoa nevada* (Sm.) (Nevada Dart) – 1-IX-2001 EM.
10777. *Euxoa aequalis* (Harv.) – 10-IX-2002 3 and 24-IX-2004 1.
10780. *Euxoa comosa* (Morr.) (Hairy Dart) – 8-VIII-2001 4, 1-IX-2001 2, 1-IX-2001 1 EM, 10-IX-2002 1, 27-VIII-2002 1, 10-IX-2002 4, 18-VII-2004 1, 28-VIII-2004 1, 24-IX-2004 1, 2A-VIII-2005 2, 2B-VIII-2005 1, 28A-VIII-2005 4, 6B-VIII-2006 1, 27A-VIII-2006 2, 27B-VIII-2006 2 and 27C-VIII-2006 1.
10794. *Euxoa setonia* McD. (Seton Lake Dart) – 20-VI-2001 4, 27-VI-2002 3, 12-VII-2002 2, 25C-VI-2003 1, 12B-VII-2003 1 and 12B-VI-2006 1.
10798. *Euxoa basalis* (Grt.) (Basal Dart) – 8-VIII-2001 1 and 21-VIII-2002 1.
10801. *Euxoa ochrogaster* (Gn.) (Red-backed Cutworm Moth) – 8-VIII-2001 5, 1-IX-2001 3, 21-VIII-2002 1, 10-IX-2002 4, 15-VIII-2004 1 and 28A-VIII-2005 1.
10804. *Euxoa plagigera* (Morr.) (Plaited Dart) – 15-VIII-2004 1 and 28A-VIII-2005 1.
10807. *Euxoa albipennis* (Grt.) (White-winged Dart) – 10-IX-2002 1 and 28-VIII-2004 1.
10813. *Euxoa medialis* (Sm.) (Median-banded Dart) – 10-IX-2002 1 and 24-IX-2004 1.

10817. *Euxoa obeliscoides* (Gn.) Obelisk Dart) – 1-IX-2001 4 EM, 10-IX-2002 1 and 24-IX-2004 3.
10826. *Euxoa* nr. *idahoensis* (Grt.) – 2B-VIII-2005 1.
10830. *Euxoa quadridentata* (Grt. & Rob.) (Four-toothed Dart) – 1-IX-2001 EM.
10833. *Euxoa olivalis* (Grt.) – 18-VII-2004 1 and 2A-VIII-2005 1.
- 10852/10854. *Euxoa auripennis* Laf. or *E. servita* (Sm.) – 8-VIII-2001 1, 1-IX-2001 2, 18-VII-2004 1 and 6B-VIII-2006 1.
10861. *Euxoa ridingsiana* (Grt.) (Riding's Dart) – 8-VIII-2001 3, 21-VIII-2002 3, 10-IX-2002 2 and 15-VIII-2004 1.
10891. *Ochropleura implecta* Laf. – 20-VI-2001 1.
10894. *Protophygia querula* (Dod) – 25C-VI-2003 1 and 18-VII-2004 1.
10910. *Anicla tepperi* (Sm.) (Black-girdled Dart) – 19-VI-2004 2, 18-VII-2004 1, 24-IX-2004 1 and 21-VI-2005 4.
10915. *Peridroma saucia* (Hbn.) – 4-VI-2002 1, 27-VI-2002 3, 21-VIII-2002 2, 10-IX-2002 2, 25C-VI-2003 4 and 12B-VII-2003 1.
10923. *Actebia balanitis* (Grt.) (*Protexarnis squalid*) (Acord Dart or Bracketed Dart) – 20-VI-2001 2, 1-IX-2001 1, 27-VI-2002 1, 12-VII-2002 1, 25B-VI-2003 2, 25C-VI-2003 1, 18-VII-2004 1, 28A-VIII-2005 2, 27A-VIII-2006 1, 27B-VIII-2006 1 and 27C-VIII-2006 1.
10926. *Spaelotis clandestina* (Harr.) (Clandestine Dart) – 2-VII-2000 1, 12-VII-2002 1, 21-VIII-2002 2, 25C-VI-2003 3, 18-VII-2004 1, 24-IX-2004 2, 21-VI-2005 1, 28A-VIII-2005 1, 27A-VIII-2006 1 and 27B-VIII-2006 1.
- 10927.1. *Spaelotis bicava* Laf. – 20-VI-2001 1.
10929. *Eurois occulta* (L.) (Great Grey Dart) – 28A-VIII-2005 1 and 6A-VIII-2006 1.
10930. *Eurois astricta* Morr. (Great Brown Dart) – 18-VII-2004 3 and 28A-VIII-2005 1.
10931. *Eurois nigra* (Sm.) – 18-VII-2004 1 and 15-VIII-2004 1.
10942. *Xestia c-nigrum* (L.) (Lesser Black-letter Dart) – 20-VI-2001 2.
10944. *Xestia smithii* (Snell.) (Smith's Dart or Spotted Clay Dart) – 8-VIII-2001 3, 15-VIII-2004 1, 2A-VIII-2005 1, 2B-VIII-2005 5, 6A-VIII-2006 2, 6B-VIII-2006 1 and 27A-VIII-2006 1.
10954. *Agnorisma bugrai* (Koçak) (*Xestia collaris*) (Collared Dart) – 8-VIII-2001 1, 1-IX-2001 2, 15-VIII-2004 4 and 28A-VIII-2005 4, 27A-VIII-2006 1, 27B-VIII-2006 2 and 27C-VIII-2006 1.
10962. *Xestia* (*Anomogyna*) *perquiritata* (Morr.) (Divided Dart) – 6A-VIII-2006 1.
10992. *Paradiarsia littoralis* (Pack.) (Labrador Dart) – 2-VII-1999 SR, 2-VII-2000 1, 8-VI-2001 2, 20-VI-2001 1, 12-VII-2002 1, 25B-VI-2003 1, 25C-VI-2003 1, 18-VII-2004 1, 12A-VI-2006 1 and 12C-VI-2006 1.
11004. *Protolampra rufipectus* (Morr.) (Red-breasted Dart) – 18-VII-2004 1 and 2B-VIII-2005 1 and 6A-VIII-2006 1.
- 11013-11042. *Abagrotis* spp. – 15-VIII-2004 3 and 28-VIII-2004 1.
11018. *Abagrotis trigona* (Sm.) – 10-IX-2002 1 and 2A-VIII-2005 1.
- 11032.1. *Abagrotis orbis* (Grt.) – 28A-VIII-2005 1.
11038. *Abagrotis nanalis* (Grt.) – 21-VIII-2002 1 and 15-VIII-2004 2.
11041. *Abagrotis placida* (Grt.) group (Placid Dart) – 2A-VIII-2005 1, 2B-VIII-2005 1, 28A-VIII-2005 6, 6B-VIII-2006 1, 27B-VIII-2006 2 and 27C-VIII-2006 1. A taxonomic revision is needed in this group.

- 11041.1. *Abagrotis hermina* Laf. – 1-IX-2001 1, 12-VII-2002 1, 21-VIII-2002 2, 10-IX-2002 3, 18-VII-2004 1, 15-VIII-2004 5, 28-VIII-2004 1 and 28A-VIII-2005 1.
 11051. *Ufeus satyricus* Grt. (*Satyr* Dart) – 11-IX-2004 4.
 11192. *Schinia cumatilis* (Grt.) (*Silver-banded Gem*) – 18-VII-2004 1.

DISCUSSION

A meaningful comparison can be made between the moths of Dry Island Buffalo Jump Provincial Park and those of the Buffalo Lake Conservation Area, north of Stettler, Alberta. Percentage-wise, 49.6% (342 species) of the recorded moths were common to both, while 27.9% (194 species) were found only in the Buffalo Lake area and 22.9% (159 species) were found only in the Dry Island area. This can be explained on the basis of the ecological dissimilarities of the two areas: the Buffalo Lake area being typical native Aspen Parkland; while the Dry Island area is comprised of diverse communities, including riverine forest, badland terrain on south facing slopes, native grassland, shrubland and mixed woods on north-facing slopes. The higher number of plant species and the greater range of soil and microclimate habitats in the Dry Island area meet the ecological requirements of a greater number of moth species.

SUMMARY

Up to the end of 2001 (Bird 2002) a total of 212 species of Lepidoptera, 179 moths and 25 butterflies and skippers, were known from the Park. Since then, further studies have steadily raised the totals: Bird (2003) to 319 species of Lepidoptera, Bird (2004) to 349, Bird (2005) to 459, Bird (2006) to 525; while the present report raises it to 580 species. The vast majority of these were not reported from Area 5 by Bowman (1951). Many are known, however, from Tolman Bridge about 15 km downstream (see Bird 2006). It is felt that the overall total can be brought to over 700 by further study. To put things into perspective, it is thought that there are about 1000 macromoths, 1000 micromoths and 170 butterflies in the province. The present report is still “a work in progress”. Many more species can still be added, some of the present reports will be found to be misidentified, and there are still species in the “unknown” category which will eventually be determined.

At least three moths (a *Cauchas* (*Adela*), an *Aroga*, a *Eucosma*, a *Pelochrista*, and possibly a *Sciota*) collected in the area, appear to be undescribed species. Many prairie species, such as *Synanthedon polygona*, *Epiblema beningatum*, *Epinotia columbia* sensu R.L. Brown, *Mimoschinia rufofascialis*, *Nephopterix fernaldi*, *Toripalpus trabalis*, *Catastia actualis*, *Toripalpus trabalis*, *Platytes vobisne*, *Chaetoscelis bistriaria*, *Catocala hermia*, *Conocharis arizonae*, *Aseptis characta*, *Platyperigea meralis*, *Oncocnemis pallidior*, *Lacinipolia naevia*, *Tholera americana*, *Protogygia querula* and *Abagrotis trigona* reach their northern distribution limits here. Other species, such as *Epinotia albicapitana*, *Lipographis fenestrella*, *Leptostales ferruminaria*, *Sphinx drupiferarum* and *Acrionicta radcliffei* have been seldom encountered in Alberta. The insect fauna of the present area, and that of Tolman Bridge (mentioned above), is of special interest due to the protected status of the areas, and to the large number of habitats that are present.

Most Dry Island Buffalo Jump Provincial Park collections prior to 2004 were from south-facing badland habitats. In 2004 a serious attempt was made to sample steep north-facing slopes with white spruce in an area north of the “Dry Island”. This proved particularly worthwhile as many additional species were found.

The large number of species found in the Park to date indicates that it may be more biodiverse than any other area in Alberta and this provides strong support for the setting aside of the area as a Provincial Park where it receives special protection from agricultural and other commercial activities.

ACKNOWLEDGEMENTS

Wayne Nordstrom and Gerald Bennett helped with the procurement of Letters of Authority to collect Lepidoptera in the Park. Sincere thanks are extended to Gary Anweiler for verifying or identifying macromoths and Greg Pohl for his help in identifying various micromoths; also to Chris Schmidt to verifying Arctiids and Geometrids and to George Balogh for identifying the Eupithecias. Jean-François Landry identified the Coleophora species and Doug Macaulay identified the Pterophorids. Even though others helped, I personally take responsibility for the identification of the species mentioned in this report.

Felix Sperling and Danny Shpeley facilitated the study of specimens in the Bowman Collection of the Strickland Museum, and Greg Pohl did the same for the Northern Forest Research Centre Entomology Collection. Ernest Mengersen is thanked for his company in the field on several occasions and for allowing access to his extensive collection at Olds College. Wayne Nordstrom and Gerry Bennett are thanked for their help in obtaining Letters of Authority to allow the collecting of Lepidoptera in Dry Island Buffalo Jump Provincial Park.

LITERATURE CITED

- Adamski, David. 2000. A new species of Glyphidocera from south-central Colorado (Lepidoptera: Gelechioidea: Glyphidoceridae). *Faberies* 25(4): 69-78.
- Bird, C.D. 2002. Lepidoptera of Dry Island Provincial Park, a first report. Report prepared for Alberta Parks and Protected Areas. 10 pp.
- Bird, C.D. 2003. Lepidoptera of Dry Island Provincial Park, a second report. Report prepared for Alberta Parks and Protected Areas. 14 pp.
- Bird, C.D. 2004. Lepidoptera of the Tolman Bridge area, a second report. Report prepared for Alberta Parks and Protected Areas. 24 pp.
- Bird, C.D. 2004. Lepidoptera of Dry Island Buffalo Jump Provincial Park, a third report. Report prepared for Alberta Parks and Protected Areas. 18 pp.
- Bird, C.D. 2005. Lepidoptera of Dry Island Buffalo Jump Provincial Park, 1999-2004. Report prepared for Alberta Parks and Protected Areas. 24 pp.
- Bird, C.D. 2006. Lepidoptera of Dry Island Buffalo Jump Provincial Park, 1999-2005. Report prepared for Alberta Parks and Protected Areas. 27 pp.

- Bowman, Kenneth 1951. An annotated list of the Lepidoptera of Alberta. *Can. J. Zoology* 29: 121-165.
- Campbell, T.Y. 1983. Dry Island Buffalo Jump Provincial Park Master Planning Study; Biophysical Resource Overview and Assessment. Resource Planning Section, Alberta Recreation & Parks, Gov. Alberta. 67 pp + appendixes and maps.
- Hodges, R. W. (ed.). 1983. Check List of the Lepidoptera of America North of Mexico. E.W. Classey Ltd. & The Wedge Entomological Research Foundation.
- Kondla, N. & W. Smith. 1972. An ecological survey of Dry Island Buffalo Jump Provincial Park. Dept. Lands & Forests, Gov. Alberta. 55 pp.
- Landry, B. & J.-F. Landry. 2004. The genus *Alucita* in North America, with description of two new species (Lepidoptera: Alucitidae). *The Canadian Entomologist* 136: 553-579.
- Lohr, Lloyd. 1993. Dry Island Buffalo Jump Provincial Park Lists. Birds. Report submitted to Alberta Parks and Recreation.
- Neunzig, H. H. 2003. The Moths of America North of Mexico. Fasc. 15.5. Pyraloidea, Pyralidae (part), Phycitinae (part). The Wedge Entomological Research Foundation. Pp. 1-338.
- Nordstrom, W. & K. Wilkinson. 1980. Dry Island Buffalo Jump Provincial Park – Preliminary Recommendations and Management Considerations. Alberta Recreation & Parks, Gov. Alberta.
- Pohl, G., C. D. Bird, J.-F. Landry & G. Anweiler. 2005. New records of Microlepidoptera in Alberta, Canada. *J. Lep. Soc.* 59(2): 61-82.
- Wallis, C. 1977. Red Deer River Resource Evaluation. Alberta Recreation, Parks & Wildlife, Gov. Alberta.

USEFUL ONLINE INFORMATION SOURCES ON MOTHS

Information on many of our Alberta moths can be found at the Entomology Collection Search site of the E.H. Strickland Entomological Museum of the Department of Biological Sciences at the University of Alberta: <http://www.entomology.ualberta.ca/>.

Illustrations of Alberta macromoths can be found at a site put together by D. Lafontaine and J. Troubridge called “The Moths of Canada”:
http://www.cbif.gc.ca/spp_pages/misc_moths/phps/mothindex_e.php.

Illustrations on many of the western American macromoths can also be found on a site put together by The Moth Photographers Group:
<http://www.origins.tv/MothPhotographersGroup/WestPlates.htm>.

D. Lynn Scott has a web site with natural photos of over 400 species of moths that she has found in Ottawa, Ontario (<http://acleris.com/dls/mothindex.html>). As many of the species also occur in Alberta, these images can be quite helpful

USEFUL BOOKS ON MOTHS

- Covell, Charles V., Jr. 1984. A Field guide to Moths; Eastern North America. Houghton, Mifflin Co., Boston, New York.

- Handfield, Louis. 1999. *Le Guide des Papillons du Quebec*. Vol. 1. Broquet, Boucherville, QC.
- Ives, W.G. H. & H. R. Wong. 1988. *Tree and Shrub Insects of the Prairie Provinces*. Can. Forestry Serv., Northern For. Centre, Inf. Rept. NOR-X-292.

APPENDIX

Collection dates, sites and other details

- 11 July 1999 – Diurnal, Butterfly Count in area from north lookout to picnic area.
- 2 July 2000 – Diurnal, Butterfly Count in area from north lookout to picnic area.
- 8 June 2001 – UV trap, S-facing slope & vicinity of picnic area, 51.93, 112.97.
- 20 June 2001 – UV trap, S-facing slope & vicinity of picnic area, 51.93, 112.97. With Ernest Mengersen.
- 8 July 2001 – Diurnal, Butterfly Count in area from north lookout to picnic area.
- 8 August 2001 – UV trap, S-facing slope & vicinity of picnic area, 51.93, 112.97. With Ernest Mengersen.
- 1 September 2001 – UV trap, S-facing slope & vicinity of picnic area, 51.93, 112.97. An ALG outing with Gary & Judy Anweiler, Ernest Mengersen, Felix Sperling, Rob Hughes & Bruce Christensen.
- 4 June 2002 – UV trap, S-facing slope & vicinity of picnic area, 51.93, 112.97. With Ernest Mengersen.
- 27 June 2002 – UV trap, S-facing slope & vicinity of picnic area, 51.93, 112.97.
- 7 July 2002 – Diurnal, Butterfly Count in area from north lookout to picnic area.
- 21 August 2002 – UV trap, S-facing slope & vicinity of picnic area, 51.93, 112.97.
- 10 September 2002 – UV trap, S-facing slope & vicinity of picnic area, 51.93, 112.97.
- 21A May 2003 – UV trap, vicinity of picnic area, 51.936, 112.961, 722 m.
- 21B May 2003 – UV trap, S-facing slope, 51.939, 112.964, 760 m.
- 25A June 2003 – UV trap, Section 26, grassland above badlands, vicinity of old windmill, 51.863, 113.014, 800 m.
- 25B June 2003 – UV trap, Section 26, grassland, SE-facing slope 100 yards south of old windmill, 51.86323, 113.01442, 810 m.
- 25C June 2003 – UV trap, Section 26, S-facing slope 300 yards SE of old windmill, 51.86294, 113.01372, 800 m.
- 6 Jul 2003 – Diurnal, Butterfly Count in area from north lookout to picnic area.
- 12A July 2003 – UV trap, vicinity of picnic area, 51.936, 112.961, 722 m.
- 12B July 2003 – UV trap, S-facing slope, 51.939, 112.965, 760 m.
- 19A June 2004 – Diurnal, Badland terrain, north trail to “Dry Island”, 51.95, 112.95, 800-850 m.
- 19B June 2004 – UV trap, steep N-facing slope, mixed woods, north of “Dry Island”, 51.959, 112.746, 836 m.
- 11 July 2004 – Diurnal, Butterfly Count in area from north lookout to picnic area.
- 18A July 2004 – Diurnal, badland terrain, north of “Dry Island”, 51.95, 112.95, 850 m.
- 18N July 2004 – UV trap, steep N-facing slope, mixed woods, north of “Dry Island”, 51.959, 112.746, 836 m.
- 18SE July 2004 – UV trap, SE facing badland slope, north of “Dry Island”, 51.958, 112.942, 823 m.

- 15N August 2004 – UV trap, steep N-facing slope, mixed woods, north of “Dry Island”, 51.959, 112.746, 836 m.
- 15SE August 2004 – UV trap, SE facing badland slope, north of “Dry Island”, 51.958, 112.942, 823 m.
- 28N August 2004 – UV trap, steep N-facing slope, mixed woods, north of “Dry Island”, 51.959, 112.746, 836 m.
- 28SE August 2004 – UV trap, SE facing badland slope, north of “Dry Island”, 51.958, 112.942, 823 m.
- 24SE September 2004 – UV trap, SE facing badland slope, north of “Dry Island”, 51.958, 112.942, 823 m.
- 24N September 2004 – UV trap, steep N-facing slope, mixed woods, north of “Dry Island”, 51.959, 112.746, 836 m.
- 22A April 2005 – UV trap, SE facing badland slope, north of “Dry Island”, 51.958, 112.942, 823 m.
- 22B April 2005 – UV trap, Steep N-facing slope, mixed woods, north of “Dry Island”, 51.959, 112.746, 836 m.
- 21N June 2005 – UV trap, Steep N-facing slope, mixed woods, north of “Dry Island”, 51.959, 112.746, 836 m.
- 21SE June 2005 – UV trap, SE facing badland slope, north of “Dry Island”, 51.958, 112.942, 823 m.
- 10 July 2005 – Diurnal, Butterfly Count in area from north lookout to picnic area.
- 2A August 2005 – UV trap, SE facing badland slope, north of “Dry Island”, 51.958, 112.942, 823 m.
- 2B August 2005 – UV trap, steep N-facing slope, mixed woods, north of “Dry Island”, 51.959, 112.746, 836 m.
- 28A August 2005 – UV trap, SE facing badland slope, north of “Dry Island”, 51.958, 112.942, 823 m.
- 28B August 2005 – UV trap, steep N-facing slope, mixed woods, north of “Dry Island”, 51.959, 112.746, 836 m.
- 16A May 2006 – UV trap, SE facing badland slope, north of “Dry Island”, 51.958, 112.942, 823 m.
- 16B May 2006 – UV trap, steep N-facing slope, mixed woods, north of “Dry Island”, 51.959, 112.746, 836 m.
- 12 June 2006 – Diurnal, badlands, mainly S-facing, north and NE of the picnic area, 51.94, 112.96, abt 800 m.
- 12A June 2006 UV trap, Edge of riverine forest, beside aspen & silverwillow, picnic area, 51.936, 112.961, 720 m.
- 12B June 2006 – UV trap, bottom of draw with *Juniperus horizontalis*, north of picnic area, 51.939, 112.966, 748 m.
- 12C June 2006 – UV trap, prairie near aspen, north of picnic area, 51.943, 112.969, 822 m.
- 9 July 2006 – Diurnal, CNF Field trip in area from north lookout to picnic area.
- 16 July 2006 – Diurnal, Butterfly Count in area from north lookout to picnic area.
- 6A August 2006 – UV trap, Steep N-facing slope, mixed woods, north of the “Dry Island”, 51.959, 112.746, 836 m.
- 6B August 2006 – UV trap, SE facing badland slope, north of the “Dry Island”, 51.958, 112.942, 823 m.

- 6C August 2006 – UV trap, steep, S-facing grassy slope with *Artemisia biennis* & *longifolia*, north of the “Dry Island”, 51.95728, 112.94668, 850 m.
- 27A August 2006 – UV trap, Steep N-facing slope, mixed woods, north of the “Dry Island”, 51.959, 112.746, 836 m.
- 27B August 2006 – UV trap, SE facing badland slope, north of the “Dry Island”, 51.958, 112.942, 823 m.
- 27C August 2006 – UV trap, steep, S-facing grassy slope with *Artemisia biennis* & *longifolia*, north of the “Dry Island”, 51.95728, 112.94668, 850 m.