

Visitation Statistics

Provincial Parks & Recreation Areas

1998/99



prepared by
Alberta Environment
Natural Resources Service
Parks and Protected Areas Division
Program Development and Coordination Branch

Visitation Statistics

Provincial Parks & Recreation Areas

1998/99

prepared by
Alberta Environment
Natural Resources Service
Parks and Protected Areas Division
Program Development and Coordination Branch

Foreword

The 'Visitation Statistics, 1998/99' report, covering the period April 1, 1998 to March 31, 1999, is published annually to supply selected information on Provincial Parks and Recreation Areas. This publication provides data on the following aspects of park visitation:

Camping Use Statistics

Based on camping permit sales analysis, and / or reasonable estimates of camping use and camper surveys.

Day Use Statistics

Collected through Automatic Traffic Counter readings and traffic surveys.

Group Camping Use Statistics

Based on group use permit sales analysis.

Fixed Roof Accommodation Use Statistics

Kananaskis Country - actual number of guests.

Visitation statistics are reported both at the park or 'management unit' level and 'area' level (i.e., individual campgrounds, day use areas, group use areas, fixed roof accommodation facilities). Statistics are summarized for provincial parks and recreation areas. The data collection systems associated with these visitation statistics are discussed in detail in the Introduction Section.

Ten years of historical statistics for camping, group camping, fixed roof accommodation, and day use are included in this report.

As of year-end 1999, there were 64 provincial parks and 282 provincial recreation areas in the province. The majority of parks and approximately half of the provincial recreation areas report visitation. Provincial recreation areas that experience marginal visitation do not report use.

In addition to visitation, this report provides information covering facilities and services for selected sites. To put the province in perspective, a map (see Appendix) is also included. It shows the six Alberta Environment corporate regions in Alberta. Additional information on the provincial parks and provincial recreation areas can be obtained from the following 'Web Site':
(<http://www.gov.ab.ca/env/parks.html>)

Inquiries regarding the statistics reported in this document or a further explanation of the methodology are welcomed, and should be directed to the Program Evaluation and Research Coordinator at (780) 427-7009.

Copies of this publication are distributed to other Alberta government agencies, all provincial park agencies in Canada, Parks Canada, and selected libraries (e.g., the Alberta Legislature, Alberta Provincial Archives and the National Library of Canada). In addition, copies of this report are also available in electronic format. Inquiries should be directed to:

Alberta Environment
Natural Resources Service
Parks and Protected Areas Division
Program Evaluation and Research Coordinator
2nd Floor, Oxbridge Place
9820 - 106 Street
Edmonton, Alberta
T5K 2J6

Telephone: (780) 427-7009
Fax: (780) 427-5980

The Parks and Protected Areas Division greatly appreciates and acknowledges the conscientious efforts of all those who collect and record the data.

Table of Contents

	Page		Page
Foreword	iii	Appendix	55
Introduction	1	Map of Regional Boundaries	57
Camping Statistics Methodology	1	Summer Facilities Chart	59
Day Use Statistics Methodology	2	Charts	
Group Camping Statistics Methodology	3	Percent of Visitation by Type	11
Fixed Roof Statistics Methodology	3	Provincial Historic Visitation Summary	12
Historical Comparison	4		
Visitation Highlights For 1998/99	5		
Glossary of Terms	7		
Provincial Summary			
Visitation Statistics	9		
Historical Comparison	10		
Regional Summary			
Prairie Region	13		
Parkland Region	15		
Northeast Boreal Region	17		
Northwest Boreal Region	19		
Northern East Slopes Region	20		
Southern East Slopes Region	22		
Fixed Roof	29		
Historical Comparison			
Camping	31		
Group Use	42		
Day Use	48		
Fixed Roof	29		

Introduction

This report presents Visitation Statistics for the period of April 1, 1998 to March 31, 1999. Information is presented for all Provincial Parks and Recreation Areas, at both the park level and 'area' level (e.g., individual campground statistics for those parks with multiple campgrounds).

Visitation statistics have been reported for approximately the last 30 years. This is the 12th year of publication of this particular report. Since the first publication in 1986/87, the reporting format virtually remained unchanged. The 1991/92 report represented the first major formatting change as part of an effort to make the report more complete and to provide users with as much useful information as possible. The 1993/94 report was dramatically 'streamlined' in an effort to make the information more user friendly. The 1998/99 report continues with this approach. Additional changes will be phased in, in an on-going basis to better suit the current and / or changing needs of the report users.

Visitation data is not collected for the province's 3 wilderness areas, 155 natural areas, 16 ecological reserves, 31 crown reservations, Willmore Wilderness Park and 15 wildland parks.

Tables summarising statistics for camping use, day use, group use, and fixed roof accommodation use are included in this report. Charts are also included to facilitate the comparison of visitation type and previous year provincial comparisons for the same reporting period. It is important to note that individual campground

statistics do not include overflow. This statistic is only included at the park level. Also, for those parks which have more than one day use area, the Park level day use statistic total discounts for any multiple visitation (i.e., a day use party who visits more than one day use area in the park).

Selected visitation statistics (e.g., campground turnaways, nights at a specified percent range occupancy for camping, or area night's available / occupied for group use areas) which were reported in the past, are not included. They are, however, available upon request. In addition, visitation data can be further analysed to meet specific information requirements. These queries should be directed to the Program Evaluation and Research Coordinator. Brief descriptions of the data collection methodologies used for each category of use statistics follow.

Camping Statistics Methodology

Camping statistics are based primarily upon information obtained from camping permits. These permits are issued via two systems:

- The Standard Camping Permit system; and
- the Self-Registration Permit (envelope) system.

Standard Camping Permits and associated periodic surveys provide information on occupied campsite nights, average camping party size and accommodation unit usage. This information enables calculation of the

number of campers and camping permits issued (see Glossary).

It is important to note that the average number of camping permits issued for a site is based on past peak season (April to September) survey results. Camping permits issued are therefore derived for the same period. Off-season (October to March) camping permit figures are equivalent to the occupied campsite nights for the corresponding period. There are no off-season survey statistics available for calculating an average number of camping permits issued figure.

Occupied campsite nights are based on the premise that a site is considered occupied when a permit has been issued and that site is occupied by the permittee and at least one camping accommodation unit.

Self-Registration Permits also provide statistics on occupied campsite nights, and requires periodic surveys to provide data on camping party size and accommodation unit usage.

Campground occupancy data are determined from an analysis of:

1. campground capacity,
2. the number of days in July and August,
3. the number of sites affected by closures per day; and
4. the total occupied campsite nights per month.

Refer to the Glossary for the formula used in calculating July-August average daily percent occupancy. The average daily percent occupancy for July-August is only reported, since this is considered to be the busiest time of the year for camping. Average daily percent occupancy for weekends / weekdays by month and average daily percent occupancy by month are however available upon request. Overflow unit night figures, whenever appropriate, and number of campsites for each campground is included in the camping statistics tables.

Backcountry camping is collected through a permit system.

Day Use Statistics Methodology

An evaluation of day use data collection procedures in 1981 concluded that the methodology then in use was non-systematic and resulted in day use statistics, which were not accurate. Consequently a day use calibration program was implemented in the summer of 1983 and since then, all Provincial Parks have been surveyed as well as the sub-districts within Kananaskis Country.

For the Provincial Parks and the sub-districts within Kananaskis Country, peak season day use statistics are based on figures collected from automatic traffic counters. Adjustments to these counts include determining the ratio of day use vehicles to all other vehicles entering or exiting the park and average party size. It is important to

note that the ratio of day use to all other vehicles also discounts for multiple visitations to day use facilities or multiple stops along recreation corridors (e.g., the sub-districts within Kananaskis Country). Both the ratio of day use to all other vehicles and average party size adjustment factors are obtained through a periodic day use calibration survey.

The survey involves stopping traffic on 20 randomly selected days during the peak season (April - September) to conduct brief interviews. Daily vehicle counts and the survey information are analysed to yield **estimates** of day use visitation. When traffic counter readings are not available, the total vehicle counts are supplemented by estimates. This, plus the fact that adjustment factors obtained from past day use calibration surveys are becoming increasingly dated, serves to illustrate the need to **interpret the day use data with caution**.

It is important to note a significant change to the day use statistics reported for provincial recreation areas. For the majority of provincial recreation areas outside of Kananaskis Country, day use statistics prior to 1989 were calculated using camping figures multiplied by the relative relationship between camping and day use. Beginning in 1989, day use statistics for provincial recreation areas are based upon Automatic Traffic Counter readings, as is the case with provincial parks.

The day use methodology for provincial recreation areas adjusts traffic counts for camper traffic (determined from permit sales and estimates of non-compliance and multiple entries/exits) and estimates of non-recreational vehicles to yield survey information and the estimates of day use visitation. This approach to day use estimation is referred to as the 'Residual Method'. This approach is also used for reporting off-season day use estimates at the majority of provincial parks, which have not completed an off-season traffic survey. Due to the change in the collection methodologies at provincial recreation areas, no historical day use comparison is provided prior to the implementation of the residual method.

Group Camping Statistics Methodology

A standard system for collecting group camping use statistics was implemented in 1986. No prior statistics are available. Currently the group use permit system collects information pertaining to group camping unit nights, group campers, and occupancy. A survey component of the group use permit provides the average number of people in a group unit, which is required to calculate the number of group campers.

Fixed Roof Accommodation Use Statistics Methodology

Occupied room nights and number of guests are derived from receipts, summarized and forwarded from Kananaskis Country to Parks and Protected

Areas Division. The number of guests are based on actual figures as opposed to derived (i.e., using an average party size to calculate number of guests).

Historical Comparison

Some of the regional boundaries have changed over the years and as a result, the shifting of

regional responsibilities for some parks and recreation areas has also occurred. It is therefore not possible to compare regional totals, for historical comparison purposes, from one publication to another (the exception being park specific totals). This report should be used to that end.

Visitation Highlights For 1998/99

Total Visitation

Nearly 8.7 million people visited provincial parks and recreation areas during the 1998/99 Fiscal Year. This represents an increase of 2.1 percent from 1997/98 Fiscal Year.

The weather, fire hazard, road construction and other factors affect visitation to specific parks and recreation areas. Weather conditions for the summer months of 1998 were characterised by above normal temperature anomalies and drier than normal conditions.

Overnight Visitation

The total number of campsites in operation during the 1998/99 Fiscal Year was 13,320. This represents a slight increase over the previous year.

The total number of camping parties increased 2.1 percent from the 1997/98 Fiscal Year. However it is important to note that for a number of sites, camping data was either incomplete or not available. The reported camping for these sites is based on a five-year average. These sites are identified in the statistics tables.

Group camping decreased by 12.5 percent from the 1997/98 Fiscal Year.

Day Use

An estimated 6.7 million-day use visitors used provincial parks and recreation areas during the 1998/99 Fiscal Year. This represents an increase of 2.0 percent from 1997/98 Fiscal Year.

It should be noted that for several areas within Kananaskis Country, day use data was incomplete. These areas are identified in the statistics tables as '🔔 - Data Incomplete'. A figure is, however, estimated which is included in the regional (i.e., Southern East Slopes Region) and provincial totals. The estimated value is based on a previous five-year average for Kananaskis Country.

In addition, for a number of other sites, day use data was either incomplete or not available. The reported day use for these sites is based on a five-year average. These sites are identified in the statistics tables.

Final Synopsis

In comparing the Fiscal Year 1998/99 over the previous year, the province experienced an increase in camping and day use while group camping decreased. Overall, total visitation to provincial parks and recreation areas increased slightly. It is important to note that for several areas, data was either not available or incomplete. For the most part, this effected the reported day use visitation. Clearly this has an impact on the reported visitation but the extent cannot be ascertained at this point in time. The information contained in this report is the best available at the time of preparation.

Efforts to review the statistics collection system to meet present and future needs through automated query facilities are ongoing. For further information on this, please contact: Program Evaluation and Research Coordinator.

Glossary

Camping Use Definitions

Average Camping Party Size - Average number of people per occupied campsite. This is determined for each area by a periodic survey of camping permits.

Average Daily July-August Percent Campground Occupancy - Total occupied campsite nights for July and August divided by the total number of site nights available for the same period. Resultant figures are expressed as a percentage (i.e., multiplied by 100).

Campers - Average camping party size multiplied by the number of occupied campsite nights. In the past, this was referred to as Individual Camper Nights.

Camping Accommodation Unit - A tent, a tent trailer, a travel-trailer, a motorhome, a camperized van, or a truck camper.

Camping Permits - Average number of camping permits issued per campsite multiplied by the monthly total of occupied campsite nights. It is important to note that this statistic represents an **estimate** of the number of camping permits issued. In the past, this estimate was referred to as Accommodation Unit Nights.

Occupied Campsite Night - One site occupied for one night.

Overflow Unit Night - One camping accommodation unit in an area designated as an overflow area for one night.

Group Use Definitions

Group Area Nights Available - Number of group use areas multiplied by nights per month minus group areas closed per month multiplied by nights affected.

Group Camping Area Capacity - Each group camping area has a defined capacity. It is based on the number of camping accommodation units that can be accommodated in the group camping area.

Group Unit Night - One camping accommodation unit in an area designated as a group use area for one night.

Group Campers - Average camping party size multiplied by the number of group unit nights. In the past, this was referred to as Individual Group Camper Nights.

Day Use Definitions

Average Day Use Party Size - Average number of people associated with a vehicle entering a Provincial Park or Recreation Area for one day or portion of one day without staying overnight. This is determined by a periodic survey of day users.

Day Use Party Visit - Person(s) in a vehicle entering a Provincial Park or Recreation Area for one day or portion of one day without staying overnight.

Note: In the case of 'walk-in' day users, a party is considered to be one or more individuals who appear to enter the park together.


Day Use Visitors - Person(s) making a recreational visit to a Provincial Park or Recreation Area for one day or portion of one day without staying overnight. In the past, this was referred to as Individual Day Users.


Fixed Roof Accommodation Use Definitions


Average Daily July-August Percent Fixed Roof Occupancy - Total occupied room nights for July and August divided by the total number of room nights available for the same period. Resultant figures are expressed as a percentage (i.e., multiplied by 100).


Occupied Room Night - One room occupied for one night.

Guests - Actual number of people per occupied room.

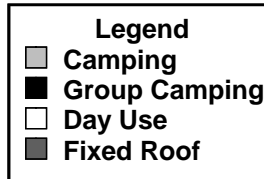
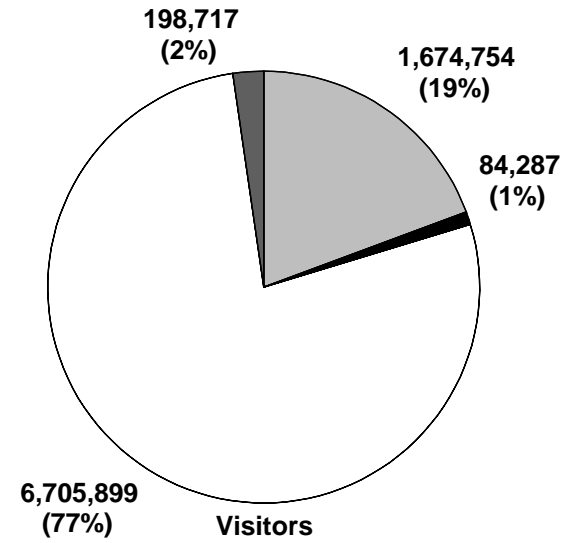
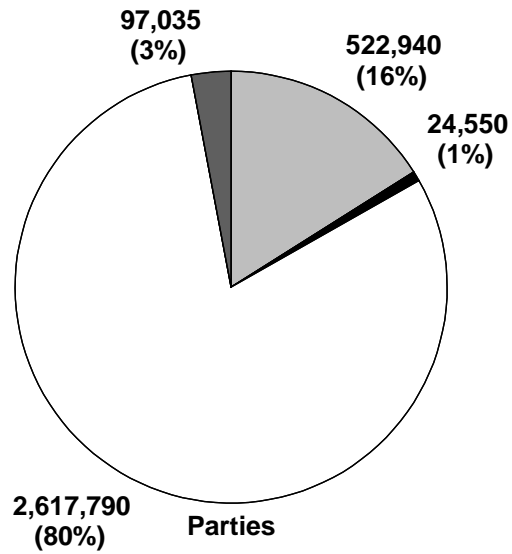
Provincial Visitation Statistics (April 1, 1998 to March 31, 1999)	Northeast Boreal Region	Northern East Slopes Region	Northwest Boreal Region	Parkland Region	Prairie Region	Southern East Slopes Region	Provincial Total
Camping							
Occupied Campsite Nights	65,145	50,819	31,794	96,088	83,180	195,914	522,940
Camping Permits Issued	66,715	51,677	33,185	99,460	87,588	213,285	551,910
Campers	213,820	155,315	102,882	319,893	266,624	616,220	1,674,754
July-August % Occupancy	NR	35	NR	47	NR	40	NR
Number of Campsites	2,128	1,280	983	2,250	2,090	4,589	13,320
Average Party Size	3.3	3.1	3.2	3.3	3.2	3.1	3.2
Group Camping							
Group Unit Nights	1,164	2,878	2,710	4,325	3,035	10,438	24,550
Group Campers	3,722	9,125	9,534	13,969	11,730	36,207	84,287
Average Party Size	3.2	3.2	3.5	3.2	3.9	3.5	3.4
Day Use							
Day Use Party Visits	177,376	93,430	106,259	239,335	330,565	1,670,825	2,617,790
Day Use Visitors	491,379	264,542	296,143	706,579	1,027,377	3,919,879	6,705,899
Average Party Size	2.8	2.8	2.8	3.0	3.1	2.3	2.6
Sub-Total Visitation							
Parties	243,685	147,127	140,763	339,748	416,780	1,877,177	3,165,280
Visitors	708,921	428,982	408,559	1,040,441	1,305,731	4,572,306	8,464,940
Fixed Roof 							
Occupied Room Nights						97,035	97,035
Guests						198,717	198,717
July-August % Occupancy						NR	NR
Number of Rooms						461	461
Average Party Size						2.0	2.0
Total Visitation							
Parties	243,685	147,127	140,763	339,748	416,780	1,974,212	3,262,315
Visitors	708,921	428,982	408,559	1,040,441	1,305,731	4,771,023	8,663,657

 Data Incomplete
NR Not Reported

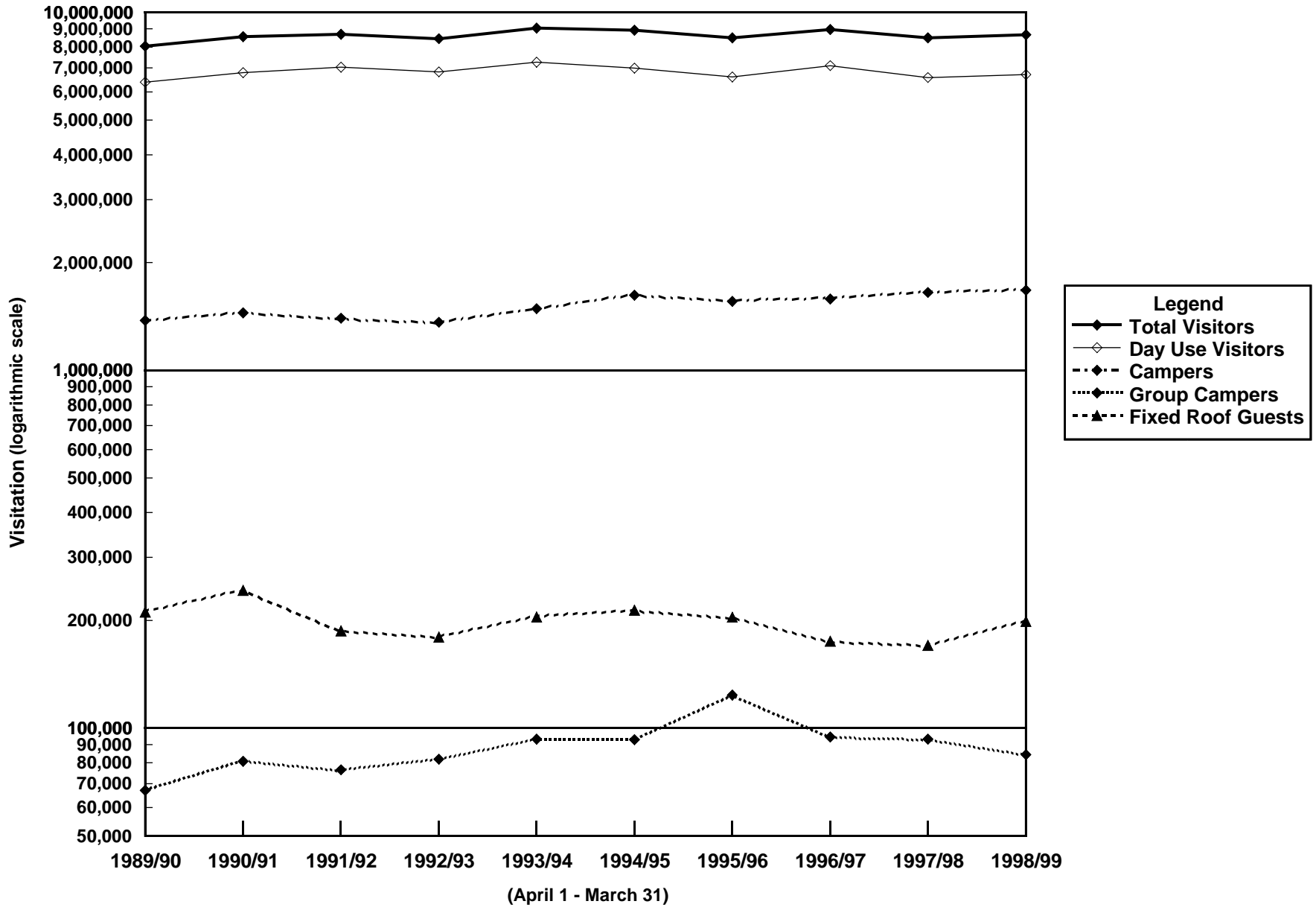
Historical Comparison (April 1, to March 31)	1989/90	1990/91	1991/92	1992/93	1993/94	1994/95	1995/96	1996/97	1997/98	1998/99	% Change From Last Year
Occupied Campsite Nights											
Northeast Boreal Region	59,262	67,823	67,825	63,355	66,113	66,254	68,042	66,265	62,704	65,145	3.9
Northern East Slopes Region	36,040	37,459	39,250	37,761	40,231	44,187	41,910	42,080	45,896	50,819	10.7
Northwest Boreal Region	22,661	24,867	21,383	21,612	25,843	26,949	29,970	28,283	29,238	31,794	8.7
Parkland Region	73,018	75,281	75,596	77,060	85,760	87,692	89,251	91,534	92,625	96,088	3.7
Prairie Region	77,649	81,912	73,836	70,845	76,925	89,319	87,983	88,868	84,413	83,180	-1.5
Southern East Slopes	158,019	153,984	149,323	140,425	158,304	184,132	166,511	172,709	197,425	195,914	-0.8
Provincial Total	426,649	441,326	427,213	411,058	453,176	498,533	483,667	489,739	512,301	522,940	2.1
Group Unit Nights											
Northeast Boreal Region	1,295	1,812	1,598	1,487	1,453	1,672	1,679	1,659	1,677	1,164	-30.6
Northern East Slopes Region	2,020	2,973	2,882	3,133	3,461	3,334	3,067	3,508	2,807	2,878	2.5
Northwest Boreal Region	2,029	2,109	1,992	2,446	2,419	2,667	2,642	2,644	2,771	2,710	-2.2
Parkland Region	2,861	3,646	2,968	3,610	4,708	4,484	5,213	6,215	6,502	4,325	-33.5
Prairie Region	3,459	3,470	3,930	3,841	4,968	5,167	5,591	4,742	5,292	3,035	-42.6
Southern East Slopes	9,549	9,800	9,088	10,012	11,235	10,506	18,916	9,541	9,009	10,438	15.9
Provincial Total	21,213	23,810	22,458	24,529	28,244	27,830	37,108	28,309	28,058	24,550	-12.5
Day Use Party Visits											
Northeast Boreal Region	199,680	206,025	203,850	213,000	188,413	197,975	183,775	177,400	168,425	177,376	5.3
Northern East Slopes Region	266,047	376,495	271,475	255,825	224,025	203,175	146,925	115,550	101,325	93,430	-7.8
Northwest Boreal Region	118,100	113,475	93,926	106,725	119,110	113,280	117,000	112,725	102,225	106,259	3.9
Parkland Region	194,894	229,925	240,650	221,675	275,795	228,894	173,575	192,125	193,125	239,335	23.9
Prairie Region	315,313	337,620	320,900	310,285	371,200	380,050	345,725	361,375	387,275	330,565	-14.6
Southern East Slopes	1,372,789	1,509,010	1,593,624	1,468,410	1,660,275	1,656,975	1,585,280	1,763,875	1,602,925	1,670,825	4.2
Provincial Total	2,466,823	2,772,550	2,724,425	2,575,920	2,838,818	2,780,349	2,552,280	2,723,050	2,555,300	2,617,790	2.4
Occupied Room Nights											
Kananaskis Village 	97,287	113,880	85,403	86,071	94,197	97,583	96,630	76,335	34,458	90,163	NR
Sundance Lodge				592	1,482	1,706	-	-	-	-	NR
William Watson Lodge	6,080	6,187	5,972	6,194	6,353	7,011	6,932	6,490	6,635	6,872	3.6
Total	103,367	120,067	91,375	92,857	102,032	106,300	103,562	82,825	41,093	97,035	NR
Total Visitation											
Parties	3,018,052	3,357,753	3,265,471	3,104,364	3,422,270	3,413,012	3,176,617	3,323,923	3,136,752	3,262,315	4.0
Visitors	8,404,774	8,556,793	8,690,973	8,443,861	9,042,464	8,915,118	8,485,459	8,952,748	8,489,105	8,663,657	2.1

 Data Incomplete
- No Data
NR Not Reported

**Percent of Visitation by Type
Provincial Total - 1998/99**



Provincial Historic Visitation Summary



Visitation Summary by Region - April 1, 1998 to March 31, 1999

	Number of Campsites	Occupied Campsite Nights	Camping Permits	Campers	July-Aug Occupancy	Group Unit Nights	Group Campers	Day Use Party Visits	Day Use Visitors	Total Parties	Total Visitors
Prairie Region	2,090	83,180	87,588	266,624	NR	3,035	11,730	330,565	1,027,377	416,780	1,305,731
<i>Provincial Parks</i>											
Cypress Hills	436	25,101	26,058	79,366	66	1,450	5,861	61,125	161,168	87,676	246,394
- Elkwater	80	7,495	7,643	23,382	93						
- Beaver Creek	39	2,643	2,651	7,239	75						
- Ferguson Hill	65	2,930	2,989	10,120	61						
- Lodge Pole	49	1,875	1,931	6,197	49						
- Firerock	100	5,826	5,960	18,988	76						
- Reesor Lake	40	2,378	2,698	7,483	57						
- Reesor Lake Dock	24	251	294	640	10						
- Spruce Coulee	10	404	525	1,277	38						
- Nicholl Spring	10	154	171	427	15						
- Battle Creek	16	369	420	1,172	25						
- Upper Graburn	3	0	0	0	0						
- Hwy #41						109	425				
- Main						411	1,808				
- Willow Creek Equestrian						280	1,092				
- Old Girl Guides						650	2,535				
- Elkwater Townsite								52,550	137,820		
- Reesor Lake/Spruce Coulee								8,975	24,435		
Dinosaur	128	9,487	9,709	30,141	69	429	1,684	14,600	49,725	24,516	81,549
Dry Island Buffalo Jump								3,975	12,803	3,975	12,803
Wyndham-Carseland (02)	196	8,256	9,899	26,420	NR	99	386	17,560	54,436	25,915	81,242
- Carseland A						36	140				
- Carseland B						36	140				
- Carseland C						27	105				
- Wyndham Main								-	-		
- Wyndham Johnson Island								-	-		
- Wyndham Weir								-	-		

02 Reported Camping and Day Use Based Upon Estimates
 NR Not Reported
 - No Data


Visitation Summary by Region - April 1, 1998 to March 31, 1999

Prairie Region (continued)	Number of Campsites	Occupied Campsite Nights	Camping Permits	Campers	July-Aug Occupancy	Group Unit Nights	Group Campers	Day Use Party Visits	Day Use Visitors	Total Parties	Total Visitors
Gooseberry Lake	82	1,463	1,672	4,491	16	175	522	3,325	7,648	4,963	12,661
- Gooseberry Lake Area A						81	259				
- Gooseberry Lake Area B						94	263				
Kinbrook Island	166	12,933	13,011	43,972	85	8	31	25,500	71,400	38,441	115,403
Little Bow (03)	193	7,710	7,962	25,704	32	322	1,256	11,230	34,813	19,262	61,773
Little Fish Lake	100	72	72	248	1			425	1,198	497	1,445
Midland								126,275	437,633	126,275	437,633
- Mine Site 1 2 3								7,375	24,563		
- McMullen Island								11,825	45,115		
- Tyrell Museum								117,700	406,955		
Park Lake	40	2,840	3,107	9,879	84	105	273	28,775	83,448	31,720	93,599
- Park Lake Area A						71	192				
- Park Lake Area B						34	82				
- Park Lake Boat Launch								4,400	9,860		
- Park Lake Main Area								24,425	72,438		
Taber	65	199	225	655	NR	1	4	6,900	21,055	7,100	21,714
- Old Man A						0	0				
- Old Man B						1	4				
Tillebrook	120	5,268	5,308	13,053	42			6,525	18,068	11,793	31,121
Woolford	30	265	265	887	9	30	117	1,375	4,538	1,670	5,542
Writing-On-Stone	75	5,324	5,835	18,138	73	416	1,596	8,875	30,543	14,615	50,277
<i>Provincial Recreation Areas</i>											
Bleriot Ferry	35	537	537	1,821	18			7,550	21,140	8,087	22,961
Tolman Bridge	69	877	931	3,181	11			6,550	17,765	7,427	20,946
- Tolman Bridge East	39	715	759	2,593	17			4,600	13,223		
- Tolman Bridge West	30	162	172	588	4			2,775	7,208		
Travers Dam	100	557	586	1,704	7			0	0	557	1,704
Little Bow Reservoir	25	406	427	1,225	0					406	1,225
St. Mary's (37)	130	89	94	266	4			0	0	89	266
- Lower Campground	100	0	0	0	4						
- Upper Campground	30	89	94	266	4						
McGregor Reservoir	100	1,796	1,891	5,474	13			0	0	1,796	5,474

03 Reported Day Use Based Upon Estimates **37** Construction
 NR Not Reported

Visitation Summary by Region - April 1, 1998 to March 31, 1999

	Number of Campsites	Occupied Campsite Nights	Camping Permits	Campers	July-Aug Occupancy	Group Unit Nights	Group Campers	Day Use Party Visits	Day Use Visitors	Total Parties	Total Visitors
Parkland Region	2,250	96,088	99,460	319,893	47	4,325	13,969	239,335	706,579	339,748	1,040,441
<i>Provincial Parks</i>											
Aspen Beach	586	27,342	27,342	95,334	58	0	0	62,575	187,045	89,917	282,379
- Lakeview (86)	280	12,277	12,277	42,443	52			-	-		
- Brewers Beach (86)	306	15,065	15,065	52,890	62			-	-		
- Ebeling Beach (03)								62,575	187,045		
- Aspen Beach A						0	0				
- Aspen Beach B						0	0				
- Aspen Beach C						0	0				
Big Knife	60	1,427	1,620	4,507	16			3,400	10,360	4,827	14,867
Dillberry Lake	235	2,322	2,341	8,014	11	10	34	4,125	13,868	6,457	21,916
Jarvis Bay	171	12,020	12,116	38,985	87					12,020	38,985
Ma-Me-O Beach								-	-	NR	NR
Miquelon Lake	275	16,591	17,151	53,647	60	2,062	6,458	30,350	88,655	49,003	148,760
- Miquelon Lake 1						448	1,422				
- Miquelon Lake 2						122	390				
- Miquelon Lake 3						92	294				
- Miquelon Lake 4						196	627				
- Miquelon Lake 5						82	262				
- Miquelon Lake 6						863	2,633				
- Miquelon Lake 7						259	829				
Rochon Sands	69	2,361	2,831	8,620	39	0	0	6,275	17,903	8,636	26,522
Pigeon Lake (03)	316	14,263	14,497	49,417	49	1,416	4,713	11,920	36,952	27,599	91,082
- Pigeon Lake	206	8,500	8,619	28,629	44			⚡	⚡		
- Zeiner	110	5,763	5,878	20,788	58			⚡	⚡		
- Pigeon Lake A						471	1,743				
- Pigeon Lake B						324	1,004				
- Pigeon Lake C						403	1,290				
- Pigeon Lake D						218	676				

86 Day Use Statistics Not Reported: Incompatible
03 Reported Day Use Based Upon Estimates
 Data Incomplete
 - No Data
 NR Not Reported

Visitation Summary by Region - April 1, 1998 to March 31, 1999

Parkland Region (continued)	Number of Campsites	Occupied Campsite Nights	Camping Permits	Campers	July-Aug Occupancy	Group Unit Nights	Group Campers	Day Use Party Visits	Day Use Visitors	Total Parties	Total Visitors
Red Lodge	117	6,438	7,408	22,322	52			6,725	25,605	13,163	47,927
Sylvan Lake (03)								75,545	234,190	75,545	234,190
Vermilion	98	3,650	3,842	10,203	38	410	1,418	14,275	36,170	18,335	47,791
- Vermilion A						212	784				
- Vermilion B						87	278				
- Vermilion C						111	355				
- Vermilion D						0	0				
- West						0	0				
<i>Provincial Recreation Areas</i>											
Buffalo Lake	40	1,335	1,335	4,657	45			3,625	9,063	4,960	13,720
Buck Lake	27	1,118	1,118	3,242	29					1,118	3,242
Coal Lake North	10	94	96	297	10					94	297
Coal Lake South	14	190	193	587	11					190	587
The Narrows	61	590	683	1,753	9			2,325	5,813	2,915	7,566
Cooking Lake-Blackfoot								15,975	34,075	15,975	34,075
- Central								2,025	4,945		
- Waskahegan								10,200	20,995		
- Islet Lake								3,125	7,538		
- Blackfoot Lake								1,875	4,010		
Calhoun Bay (03)	50	1,351	1,351	3,918	19			2,220	6,882	3,571	10,800
Gleniffer Lake	83	2,718	3,221	7,299	35					2,718	7,299
Dickson Dam - S B L Group						427	1,346			427	1,346
- Dickson Dam South Area						151	469				
- Dickson Dam North Area						276	877				
Medicine Lake	38	2,278	2,317	7,089	64					2,278	7,089

03 Reported Day Use Based Upon Estimates

Visitation Summary by Region - April 1, 1998 to March 31, 1999

	Number of Campsites	Occupied Campsite Nights	Camping Permits	Campers	July-Aug Occupancy	Group Unit Nights	Group Campers	Day Use Party Visits	Day Use Visitors	Total Parties	Total Visitors
Northeast Boreal Region	2,128	65,145	66,715	213,820	NR	1,164	3,722	177,376	491,379	243,685	708,921
<i>Provincial Parks</i>											
Calling Lake	25	–	–	–	–	–	–	–	–	NR	NR
Cross Lake	130	1,949	2,263	6,973	17	232	789	6,875	19,048	9,056	26,809
Cold Lake	117	2,946	2,984	8,845	28	186	558	15,775	41,988	18,907	51,391
Garner Lake	66	1,862	1,867	6,222	24	–	–	5,725	18,720	7,587	24,942
Gregoire Lake	140	6,566	6,566	21,903	43	–	–	30,925	85,838	37,491	107,741
- Gregoire Lake								23,475	51,645		
- Anzac								7,525	21,653		
Long Lake	220	14,157	14,228	45,301	66	740	2,351	10,050	29,138	24,947	76,790
- Long Lake A						470	1,487				
- Long Lake B						270	864				
Moose Lake (02)	59	1,161	1,297	3,831	NR	–	–	2,615	7,061	3,776	10,892
Sir Winston Churchill (02)	72	3,496	3,573	11,537	NR	–	–	13,705	37,004	17,201	48,541
Whitney Lakes	211	2,557	2,652	8,459	12	6	24	3,750	10,850	6,313	19,333
- Ross Lake	149	2,153	2,164	6,924	15	–	–	1,975	5,820		
- Whitney Lake	62	404	488	1,535	6	–	–	175	350		
- Ross Lake G						6	24				
- Ross Lake H						0	0				
- Ernie's Point								1,475	4,053		
<i>Provincial Recreation Areas</i>											
Beaver Lake (02)	80	2,625	2,733	8,663	NR	–	–	10,775	29,093	13,400	37,756
Crane Lake East (02)	26	1,128	1,128	3,724	NR	–	–	6,788	18,328	7,916	22,052
Crane Lake West (02)	24	1,252	1,252	4,130	NR	–	–	7,925	21,398	9,177	25,528
English Bay (02)	30	1,454	1,454	4,799	NR	–	–	3,345	9,032	4,799	13,831
Floatingstone Lake (02)	66	610	636	2,012	NR	–	–	3,785	10,220	4,395	12,232
Fork Lake (02)	43	1,353	1,420	4,464	NR	–	–	3,160	8,532	4,513	12,996
Franchere Bay (02)	200	4,392	4,607	14,492	NR	–	–	7,815	21,101	12,207	35,593
French Bay	10	604	604	1,680	60	–	–	–	–	604	1,680
Kehiwin (02)	46	1,733	1,781	5,718	NR	–	–	9,085	24,530	10,818	30,248

02 Reported Camping and Day Use Based Upon Estimates
 – No Data
 NR Not Reported

Visitation Summary by Region - April 1, 1998 to March 31, 1999

Northeast Boreal Region (continued)	Number of Campsites	Occupied Campsite Nights	Camping Permits	Campers	July-Aug Occupancy	Group Unit Nights	Group Campers	Day Use Party Visits	Day Use Visitors	Total Parties	Total Visitors
Lower Mann Lake (01)								3,845	10,382	3,845	10,382
Muriel Lake (03)	22	113	139	445	6			4,245	11,462	4,358	11,907
North Buck Lake	125	4,225	4,508	14,155	34			17,550	51,540	21,775	65,695
Lakeland (27)	233	3,455	3,455	12,084	NR	0	0	N/A	N/A	3,455	12,084
- Pinehurst Lake (01)	70	3,427	3,427	11,309	NR						
- Touchwood Lake	100	2,452	2,452	8,575	28						
- Seibert Lake	43	1,003	1,003	3,509	22						
- Ironwood Lake (01)	20	436	436	1,438	NR						
Hangingstone (03)	57	123	125	378	1			5,119	13,821	5,242	14,199
Hanmore Lake	30	1,333	1,356	4,150	46			2,025	5,568	3,358	9,718
Minnie Lake (03)	8	106	108	329	14			2,494	6,733	2,600	7,062
Wolf Lake (01)	63	1,868	1,898	6,166	NR					1,868	6,166
Engstrom	12	33	34	93	3					33	93
Maqua	13	182	185	521	23					182	521

- 01 Reported Use Based Upon Estimates
- 03 Reported Day Use Based Upon Estimates
- 27 Day Use Calibration Program has to be done.
- NR Not Reported
- N/A Not Applicable

Visitation Summary by Region - April 1, 1998 to March 31, 1999

	Number of Campsites	Occupied Campsite Nights	Camping Permits	Campers	July-Aug Occupancy	Group Unit Nights	Group Campers	Day Use Party Visits	Day Use Visitors	Total Parties	Total Visitors
Northwest Boreal Region	983	31,794	33,185	102,882	NR	2,710	9,534	106,259	296,143	140,763	408,559
<i>Provincial Parks</i>											
Hilliard's Bay	189	2,887	3,346	9,650	15	558	2,135	4,075	12,563	7,520	24,348
- Area A						297	1,247				
- Area B						137	466				
- Area C						124	422				
Queen Elizabeth (04)	55	1,235	1,325	3,951	NR	-	-	7,075	20,503	8,310	24,454
Lesser Slave Lake	113	4,722	4,873	16,913	54	924	3,402	17,125	51,265	22,771	71,580
- Lily Creek						249	722				
- Marten River Youth Camp						576	2,304				
- Golf Course						99	376				
- Marten River								1,875	4,938		
- North Shore								16,375	49,355		
- Marten Mountain								2,825	8,363		
Moonshine Lake	110	4,480	4,602	14,989	29	62	174	9,775	27,690	14,317	42,852
Notikewin (02)	19	58	74	185	NR			940	2,632	998	2,817
O'Brien (01)								9,475	26,530	9,475	26,530
Saskatoon Island (05)	96	7,184	7,233	21,780	67	472	1,603	29,075	72,688	36,731	96,071
Williamson	60	1,736	1,833	5,476	28			4,700	13,160	6,436	18,636
Winagami Lake	62	2,043	2,319	7,209	29	274	792	6,700	21,255	9,017	29,256
Young's Point	92	2,637	2,663	7,726	23	420	1,428	2,450	7,095	5,507	16,249
Dunvegan (04)	67	2,298	2,335	7,354	NR			4,175	10,438	6,473	17,792
<i>Provincial Recreation Areas</i>											
Twin Lakes (02)	49	572	588	1,829	NR			1,794	5,023	2,366	6,852
Figure Eight Lake (04)	19	943	977	3,016	NR			8,900	25,303	9,843	28,319
Heart River Dam	7	50	51	149	5					50	149
Simonette River	9	-	-	-	NR					NR	NR
Smoky River	12	950	965	2,656	75					950	2,656
Waskahigan	24	-	-	-	NR					NR	NR

01 Reported Use Based Upon Estimates
02 Reported Camping and Day Use Based Upon Estimates
04 Reported Camping Based Upon Estimates

05 Reported Group Camping Based Upon Estimates
 NR Not Reported
 - No Data

Visitation Summary by Region - April 1, 1998 to March 31, 1999

	Number of Campsites	Occupied Campsite Nights	Camping Permits	Campers	July-Aug Occupancy	Group Unit Nights	Group Campers	Day Use Party Visits	Day Use Visitors	Total Parties	Total Visitors
Northern East Slopes Region	1,280	50,819	51,677	155,315	35	2,878	9,125	93,430	264,542	147,127	428,982
<i>Provincial Parks</i>											
Carson-Pegasus	182	13,639	13,665	38,695	69	897	3,021	11,900	31,983	26,436	73,699
William A Switzer	220	6,105	6,403	20,089	34	250	739	9,530	26,684	21,055	61,728
- Jarvis Lake	24	1,424	1,596	4,933	69			7,175	23,250		
- Cache	14	559	559	1,947	47						
- Graveyard/Halfway	18	437	437	1,048	22						
- Gregg Lake	164	3,685	3,810	12,161	29			1,900	5,775		
- Beaver Ranch						36	97				
- Pine Bay						214	642				
- Nordic Centre						0	0				
- Cache/Graveyard								1,525	3,938		
- Kelley's Bathtub								-	-		
Hasse Lake								1,850	5,460	1,850	5,460
Pembina River	132	6,200	6,200	18,286	52	351	1,086	18,225	48,535	24,776	67,907
Strathcona Science								-	-	NR	NR
Thunder Lake	127	5,753	5,753	20,470	44	1,365	4,232	18,275	49,580	25,393	74,282
- Island View						906	2,809				
- Tenting Area 3						459	1,423				
- Thunder Lake Boat Launch								7,425	17,970		
- Thunder Lake Main Area								10,950	32,065		
Wabamun Lake	287	10,253	10,427	32,810	26	-	-	26,150	81,300	36,403	114,110
- Wabamun Lake A											
- Wabamun Lake B											
<i>Provincial Recreation Areas</i>											
Gunn (03)	26	823	1,003	2,057	20			7,500	21,000	8,323	23,057
Holmes Crossing	8	249	303	697	18					249	697
Big Berland	12	340	345	960	33					340	960

03 Reported Day Use Based Upon Estimates
 - No Data
 NR Not Reported

Visitation Summary by Region - April 1, 1998 to March 31, 1999

Northern East Slopes Region (continued)	Number of Campsites	Occupied Campsite Nights	Camping Permits	Campers	July-Aug Occupancy	Group Unit Nights	Group Campers	Day Use Party Visits	Day Use Visitors	Total Parties	Total Visitors
Fairfax Lake	39	948	963	2,704	25					948	2,704
Lovett River	17	241	245	682	14					241	682
Pembina Forks	20	296	301	845	15					296	845
Pierre Grey's Lakes	83	3,274	3,326	9,374	40					3,274	9,374
Rock Lake	93	1,594	1,619	4,512	20					1,594	4,512
Wildhay Group						15	47			15	47
Wildhorse (Kinky Lake)	23	904	918	2,564	46					904	2,564
Sulphur Gates	11	200	203	572	21					200	572

Visitation Summary by Region - April 1, 1998 to March 31, 1999

	Number of Campsites	Occupied Campsite Nights	Camping Permits	Campers	July-Aug Occupancy	Group Unit Nights	Group Campers	Day Use Party Visits	Day Use Visitors	Total Parties	Total Visitors
Southern East Slopes Region	4,589	195,914	213,285	616,220	40	10,438	36,207	1,670,825	3,919,879	1,877,177	4,572,306
<i>Provincial Parks</i>											
Beauvais Lake	95	3,658	4,018	11,130	39	590	2,222	5,300	13,688	9,548	27,040
Big Hill Springs								-	-	NR	NR
Chain Lakes	120	3,301	3,572	9,797	23	508	1,986	9,200	23,090	13,009	34,873
Crimson Lake	208	11,585	11,842	38,916	63	1,498	5,378	-	-	13,083	44,294
- Crimson Lake	162	9,808	9,808	32,816	72	850	3,315	-	-		
- Twin Lakes	46	1,777	2,034	6,100	34	648	2,063	-	-		
Fish Creek								890,475	1,817,528	890,475	1,817,528
- Ranch Area								124,000	253,408		
- Votier's Flats								65,100	134,423		
- Mallard Point								47,850	84,993		
- Glennfield								150,050	308,320		
- Shaw's Meadow								93,325	172,103		
- Bankside/Burnsmead								35,825	63,873		
- Sikome Lake/Hulls Wood								183,000	362,953		
- Shannon Terrace								67,852	154,154		
- Bebo Grove								130,250	290,415		
Police Outpost	46	2,618	2,689	7,483	47			5,550	17,868	8,168	25,351
Willow Creek	40	1,871	1,871	6,336	48			4,075	12,905	5,946	19,241

- No Data
NR Not Reported

Visitation Summary by Region - April 1, 1998 to March 31, 1999

Southern East Slopes Region (continued)	Number of Campsites	Occupied Campsite Nights	Camping Permits	Campers	July-Aug Occupancy	Group Unit Nights	Group Campers	Day Use Party Visits	Day Use Visitors	Total Parties	Total Visitors
Elbow Sub-District	581	23,026	25,050	71,845	35	1,069	3,574	251,475	667,695	275,570	743,114
- Gooseberry	88	4,170	4,741	12,817	42						
- Mclean Creek	170	7,822	7,976	23,481	37						
- Paddys Flat	98	4,259	5,063	14,888	38	435	1,228				
- Beaver Flats	55	2,315	2,797	7,558	40						
- Little Elbow	140	4,357	4,370	12,782	31						
- Romulus Backcountry	10	–	–	–	NR						
- Tombstone Backcountry	10	–	–	–	NR						
- Big Elbow Backcountry	5	–	–	–	NR						
- Wildhorse Backcountry	5	–	–	–	NR						
- River Cove						634	2,346				
Sheep Sub-District	254	6,577	8,047	21,979	23	958	2,889	32,600	87,573	40,135	112,441
- North Fork	24	672	825	2,341	25						
- Mesa Butte Equestrian	15	405	495	1,156	23	144	446				
- Sandy McNabb	98	2,244	2,739	7,630	18						
- Sandy McNabb Equestrian	21	655	811	2,237	25						
- Blue Rock	66	2,247	2,747	7,349	33						
- Blue Rock Equestrian	17	348	424	1,246	22						
- Three Point Backcountry	8	–	–	–	NR						
- Wolf Creek Backcountry	5	–	–	–	NR						
- Sandy McNabb A						391	1,251				
- Sandy McNabb B						423	1,192				
Highwood Sub-District	204	2,812	3,281	8,451	13	519	1,480	🕒	🕒	NR	NR
- Strawberry Equestrian	18	240	247	732	1						
- Etherington Creek	61	1,112	1,290	3,208	18	229	668				
- Etherington Creek Equestrian	10	97	126	264	13						
- Cataract	102	1,106	1,297	3,349	9						
- Greenford	13	257	320	897	21						
- Highwood River						290	812				
Spray Lakes Sub-District	50	2,628	2,628	8,283	62			20,725	51,813	23,353	60,096

🕒 Data Incomplete
 – No Data
 NR Not Reported

Visitation Summary by Region - April 1, 1998 to March 31, 1999

Southern East Slopes Region (continued)	Number of Campsites	Occupied Campsite Nights	Camping Permits	Campers	July-Aug Occupancy	Group Unit Nights	Group Campers	Day Use Party Visits	Day Use Visitors	Total Parties	Total Visitors
Peter Lougheed Park Sub-District	606	35,047	39,183	114,533	68	1,807	5,118	82,250	230,300	119,104	349,951
- Canyon	52	2,626	3,023	8,077	68						
- William Watson	20	433	466	1,209	15						
- Elkwood	130	8,354	8,504	28,404	86						
- Boulton	118	8,773	9,015	28,441	80						
- Lower Lake	104	6,114	7,246	20,131	70	1,187	3,442				
- Mount Sarrail	44	1,445	1,644	3,988	45						
- Interlakes	48	4,907	5,781	15,352	102						
- Elbow Lake Backcountry	15	334	511	1,244	22						
- Point Backcountry	20	531	835	2,151	19						
- Forks Backcountry	17	371	598	1,461	22						
- Three Island Lake Backcountry	15	357	526	1,279	27						
- Turbine Canyon Backcountry	13	248	397	891	22						
- Aster Backcountry	10	139	221	536	17						
- Pocaterra						620	1,676				
Sibbald Sub-District	144	4,448	5,297	14,543	28	0	0	☹	☹	NR	NR
- Sibbald Lake	134	4,341	5,190	14,191	30						
- Dawson Cr. Equestrian	10	74	74	243	7						
- Pine Grove A						0	0				
- Pine Grove B						0	0				
Trans Canada Sub-District	370	23,566	25,011	69,120	62	0	0	☹	☹	NR	NR
- Willow Rock	124	5,426	5,639	14,550	40						
- Bow Valley	134	11,028	11,312	33,549	81						
- Lac Des Arcs	27	1,384	1,579	4,381	52						
- Three Sisters	33	3,483	3,942	10,131	99						
- Bow River	32	2,245	2,539	6,511	73						
- Quaité Valley Backcountry	20	-	-	-	NR						
- Grouse						0	0				
- Old Church Camp 'Owl'						0	0				

☹ Data Incomplete - No Data
 NR Not Reported

Visitation Summary by Region - April 1, 1998 to March 31, 1999

Southern East Slopes Region (continued)	Number of Campsites	Occupied Campsite Nights	Camping Permits	Campers	July-Aug Occupancy	Group Unit Nights	Group Campers	Day Use Party Visits	Day Use Visitors	Total Parties	Total Visitors
Highway #40 Sub-District	375	23,967	27,386	81,528	39	69	214	☼	☼	NR	NR
- Mount Kidd RV	229	20,894	23,944	72,462	49						
- Eau Claire	51	3,073	3,442	9,066	67						
- Sundance Lodge	23	–	–	–	NR						
- Lusk Pass Backcountry	10	–	–	–	NR						
- Ribbon Falls Backcountry	12	–	–	–	NR						
- Ribbon Lake Backcountry	20	–	–	–	NR						
- Lillian Lake Backcountry	20	–	–	–	NR						
- Jewel Bay Backcountry	10	–	–	–	NR						
- Canoe Meadows						0	0				
- Porcupine						0	0				
- Stony Creek						69	214				
Canmore Nordic Centre								87,275	247,728	87,275	247,728
<i>Provincial Recreation Areas</i>											
Castle River	20	220	239	621	14					220	621
Fallen Timber	20	430	430	1,430	22					430	1,430
James River Bridge	8	119	119	372	9					119	372
Lundbreck Falls	53	4,257	4,391	12,035	83			20,750	58,100	25,007	70,135
Raven	16	110	110	291	6					110	291
Tay River	34	429	429	1,345	10					429	1,345
Ghost Reservoir	32	–	–	–	NR					NR	NR
Leslieville	12	132	157	346	11					132	346
Old Man River	40	1,906	2,005	5,675	45					1,906	5,675
Payne	30	1,842	1,940	5,540	61			6,575	15,780	8,417	21,320
Waterton	25	95	100	283	3					95	283
Indian Graves	27	425	532	1,497	16			3,900	10,920	4,325	12,417
Island Lake	41	1,121	1,177	3,379	29					1,121	3,379
Maycroft	12	130	136	389	12					130	389

☼ Data Incomplete
 – No Data
 NR Not Reported

Visitation Summary by Region - April 1, 1998 to March 31, 1999

Southern East Slopes Region (continued)	Number of Campsites	Occupied Campsite Nights	Camping Permits	Campers	July-Aug Occupancy	Group Unit Nights	Group Campers	Day Use Party Visits	Day Use Visitors	Total Parties	Total Visitors
Old Man River Dam	157	3,224	3,379	9,756	10	771	3,007			3,995	12,763
- Cottonwood	82	2,188	2,301	6,627	26						
- Chinook RV	30	452	472	1,363	3						
- Island View	45	413	435	1,246	8						
- Windy Point (Random)		171	171	521	10						
Aylmer	7	90	95	270	9					90	270
Beaverdam	38	332	350	1,003	9					332	1,003
Blackstone	10	220	232	662	15					220	662
Brazeau Reservoir	57	2,322	2,434	7,015	40					2,322	7,015
- Reservoir	33	1,074	1,131	3,238	37						
- West Canal	18	861	907	2,597	43						
- East Canal	6	178	187	535	18						
Brazeau River	7	253	266	765	34					253	765
Brown Creek	9	587	608	1,778	30					587	1,778
Cartier Creek	19	69	73	210	3					69	210
Chambers Creek	26	1,697	1,787	5,115	72	406	1,583			2,103	6,698
Crescent Falls	26	1,773	1,866	5,326	72					1,773	5,326
Dry Haven	8	450	474	1,355	59					450	1,355
Dutch Creek	42	1,822	1,918	5,462	47					1,822	5,462
Elk Creek	13	219	231	662	15					219	662
Fish Lake	92	5,276	5,554	15,792	62					5,276	15,792
Goldeye Lake	44	2,266	2,386	6,803	55					2,266	6,803
Harlech	17	715	753	2,146	43					715	2,146
Horburg	7	289	304	879	46					289	879
Jackfish Lake	8	518	545	1,564	42					518	1,564
James Wilson	32	257	271	786	14					257	786
Kootenay Plains	20	2,150	2,262	6,408	91	1,622	6,327			3,772	12,734
Livingstone Falls	22	1,056	1,112	3,169	58					1,056	3,169
Mitchell Creek	5	42	44	127	7					42	127
North Ram River	19	545	574	1,639	35					545	1,639
Oldman River North	10	357	376	1,072	43	17	66			374	1,139
Peppers Lake	16	1,260	1,327	3,788	59					1,260	3,788

Visitation Summary by Region - April 1, 1998 to March 31, 1999

Southern East Slopes Region (continued)	Number of Campsites	Occupied Campsite Nights	Camping Permits	Campers	July-Aug Occupancy	Group Unit Nights	Group Campers	Day Use Party Visits	Day Use Visitors	Total Parties	Total Visitors
Phyllis Lake	8	467	492	1,401	51					467	1,401
Prairie Creek Group						251	982			251	982
Prairie Creek	50	1,489	1,567	4,522	24					1,489	4,522
Racehorse	37	1,086	1,144	3,261	33					1,086	3,261
Ram Falls	54	1,789	1,884	5,369	33					1,789	5,369
Red Deer River	64	432	455	1,318	6					432	1,318
Saunders	5	178	187	539	36					178	539
Seven Mile	36	422	444	1,280	10					422	1,280
Shunda Viewpoint	6	246	259	743	41					246	743
Snow Creek						353	1,381			353	1,381
South Fork	22	174	183	532	6					174	532
Strachan	27	976	1,028	2,953	32					976	2,953
Swan Lake	16	760	800	2,281	43					760	2,281
Thomspon Creek	55	2,710	2,854	8,085	55					2,710	8,085
Upper Shunda Creek	21	935	984	2,816	45					935	2,816
Elk River	14	141	148	426	14					141	426

Fixed Roof Visitation Summary - April 1, 1998 to March 31, 1999

Fixed Roof Accommodation	Number of Rooms	Occupied Room Nights	Number of Guests	July-Aug Occupancy
Kananaskis Village (01)	415	90,163	171,310	NR
Sundance Lodge	24	-	-	NR
William Watson Lodge	22	6,872	27,407	NR
Total	461	97,035	198,717	NR

Historical Summary (Occupied Room Nights)	1989/90	1990/91	1991/92	1992/93	1993/94	1994/95	1995/96	1996/97	1997/98	1998/99	% Change From Last Year
Kananaskis Village	97,287	113,880	85,403	86,071	94,197	97,583	96,630	76,335	34,458	90,163	NR
Sundance Lodge				592	1,482	1,706	-	-	-	-	NR
William Watson Lodge	6,080	6,187	5,972	6,194	6,353	7,011	6,932	6,490	6,635	6,872	3.6
Total	103,367	120,067	91,375	92,857	102,032	106,300	103,562	82,825	41,093	97,035	NR

01 Reported Use Based Upon Estimates
 - No Data
 NR Not Reported

**Summary of Historic Camping Use - 1989/90 To 1998/99
(Occupied Campsite Nights)**

	1989/90	1990/91	1991/92	1992/93	1993/94	1994/95	1995/96	1996/97	1997/98	1998/99	% Change From Last Year
Prairie Region	77,649	81,912	73,836	70,845	76,925	89,319	87,983	88,868	84,413	83,180	-1.5
<i>Provincial Parks</i>											
Cypress Hills	28,434	30,330	25,941	22,818	22,709	25,788	26,188	25,559	24,538	25,101	2.3
- Elkwater	8,121	8,588	7,733	7,245	7,427	7,800	7,772	7,153	7,612	7,495	-1.5
- Beaver Creek	3,648	3,665	2,894	2,720	2,830	2,994	3,082	2,582	2,699	2,643	-2.1
- Ferguson Hill	2,876	3,219	2,880	2,196	1,917	2,625	2,860	3,388	2,700	2,930	8.5
- Lodgepole	1,874	2,127	1,906	1,799	2,100	2,444	2,185	1,920	1,743	1,875	7.6
- Firerock	5,585	6,613	5,171	4,726	4,406	4,793	5,622	5,461	5,424	5,826	7.4
- Reesor Lake	2,643	2,778	2,774	2,250	2,348	2,625	2,575	2,558	2,527	2,378	-5.9
- Reesor Lake Dock	782	352	547	330	362	336	167	189	321	251	-21.8
- Spruce Coulee	319	409	322	233	241	343	471	471	434	404	-6.9
- Nicholl Spring	260	243	247	195	175	187	222	208	153	154	0.7
- Battle Creek	365	324	264	199	136	253	253	214	326	369	13.2
- Upper Graburn	35	30	43	16	1	0	0	0	0	0	N/A
Dinosaur	4,751	4,326	4,033	4,006	4,053	6,447	7,592	8,277	8,516	9,487	11.4
Wyndham-Carseland	10,111	10,878	9,382	8,970	7,098	8,546	7,893	9,157	8,587	8,256	-3.9
Gooseberry Lake	2,103	1,805	1,152	1,112	1,236	948	1,189	987	1,345	1,463	8.8
Kinbrook Island	7,067	7,315	9,120	8,624	11,282	12,579	12,575	12,419	7,562	12,933	71.0
Little Bow	7,663	8,083	7,445	6,347	6,929	8,644	8,978	8,513	9,959	7,710	-22.6
Little Fish Lake	557	509	280	129	103	105	151	88	107	72	-32.7
Park Lake	0	2,784	2,984	2,775	3,213	3,897	3,621	3,756	3,294	2,840	-13.8
Taber	4,382	3,185	2,195	2,198	2,787	3,424	498	2389	2,714	199	NR
Tillebrook	5,641	5,213	3,203	3,812	5,221	5,883	5,478	4,961	5,961	5,268	-11.6
Woolford	282	191	137	101	110	98	173	201	203	265	30.5
Writing-On-Stone	4,122	4,909	5,211	5,689	5,511	6,290	6,187	5,913	6,004	5,324	-11.3

N/A Not Applicable
NR Not Reported

**Summary of Historic Camping Use - 1989/90 To 1998/99
(Occupied Campsite Nights)**

Prairie Region (continued)	1989/90	1990/91	1991/92	1992/93	1993/94	1994/95	1995/96	1996/97	1997/98	1998/99	% Change From Last Year
<i>Provincial Recreation Areas</i>											
Bleriot Ferry	1,708	1,358	1,499	1,100	609	671	829	618	462	537	16.2
Tolman Bridge	828	1,026	1,254	1,360	1,342	982	1,003	1,039	690	877	27.1
- Tolman Bridge East	697	795	1,028	1,000	984	746	801	766	584	715	22.4
- Tolman Bridge West	131	219	226	360	358	236	202	273	106	162	52.8
Travers Dam					265	624	485	524	498	557	11.8
Little Bow Reservoir				111	373	725	551	889	741	406	-45.2
St. Mary's				1,337	1,799	1,955	2,561	1,477	1,022	89	NR
- Lower Campground				1,193	1,381	1,636	2,119	1,363	771	0	NR
- Upper Campground				144	418	319	442	114	251	89	NR
McGregor Reservoir				356	2,285	1,713	2,031	2,101	2,210	1,796	-18.7
Parkland Region	73,018	75,281	75,596	77,060	85,760	87,692	89,251	91,534	92,625	96,088	3.7
<i>Provincial Parks</i>											
Aspen Beach	20,987	24,785	23,343	22,369	24,328	27,034	24,764	27,952	28,434	27,342	-3.8
- Lakeview	7,345	9,925	9,936	9,751	10,101	12,883	10,604	12,509	12,608	12,277	-2.6
- Brewer's Beach	13,642	14,764	13,407	12,618	14,227	14,151	14,160	15,443	15,826	15,065	-4.8
Big Knife	2,055	2,168	1,613	1,380	1,458	1,197	1,416	1,598	1,299	1,427	9.9
Dillberry Lake	4,489	4,429	4,150	3,344	2,945	2,782	2,943	2,665	3,931	2,322	-40.9
Jarvis Bay	13,309	13,854	13,314	12,098	13,660	13,126	12,979	12,943	12,370	12,020	-2.8
Miquelon Lake	10,409	8,489	11,150	13,121	13,867	14,732	15,138	15,537	15,759	16,591	5.3
Rochon Sands	2,237	2,073	2,142	1,811	2,254	1,942	1,596	2,002	2,107	2,361	12.1
Pigeon Lake	10,270	10,146	9,620	8,747	9,728	10,148	9,552	10,246	11,297	14,263	26.3
- Pigeon Lake	5,180	5,028	4,986	4,640	5,225	5,443	4,964	5,642	5,720	8,500	48.6
- Zeiner	4,961	4,809	4,492	3,904	4,193	4,432	4,283	4,440	4,517	5,763	27.6
Red Lodge	5,399	5,215	4,612	4,226	4,739	5,210	5,716	5,916	6,150	6,438	4.7
Vermilion	2,491	2,214	1,896	2,517	2,102	2,171	2,400	2,467	3,689	3,650	-1.1
<i>Provincial Recreation Areas</i>											
Buffalo Lake	528	425	727	621	910	732	831	1,145	975	1,335	36.9

NR Not Reported

**Summary of Historic Camping Use - 1989/90 To 1998/99
(Occupied Campsite Nights)**

Parkland Region (continued)	1989/90	1990/91	1991/92	1992/93	1993/94	1994/95	1995/96	1996/97	1997/98	1998/99	% Change From Last Year
Buck Lake			626	878	927	1,220	1,293	847	758	1,118	47.5
Coal Lake North				125	233	126	110	133	136	94	-30.9
Coal Lake South				301	482	269	365	385	215	190	-11.6
The Narrows	844	740	1,160	1,180	1,372	985	702	625	616	590	-4.2
Calhoun Bay	0	743	1,243	1,634	1,996	1,683	2,397	1,314	951	1,351	42.1
Gleniffer (95)				889	607	1,235	1,651	N/A	N/A	2,718	N/A
Dickson Dam - Cottonwood								194	110		N/A
Dickson Dam - Dickson Point								663	732		N/A
Dickson Dam - North Dyke								507	546		N/A
Dickson Dam - South Dyke								567	615		N/A
Medicine Lake							2,681	2,227	1,935	2,278	17.7
Northeast Boreal Region	59,262	67,823	67,825	63,355	66,113	66,254	68,042	66,265	62,704	65,145	3.9
<i>Provincial Parks</i>											
Calling Lake	693	791	829	905	832	1,035	706	-	-	-	N/A
Cross Lake	3,062	3,490	3,667	3,528	3,618	2,800	2,975	4,318	3,829	1,949	-49.1
Cold Lake	2,385	2,154	2,038	1,863	2,574	2,357	2,432	2,014	2,293	2,946	28.5
Garner Lake	1,891	2,159	2,476	2,690	3,091	3,070	3,259	2,984	2,625	1,862	-29.1
Gregoire Lake	4,694	6,268	5,553	5,436	5,156	5,798	5,417	6,380	6,316	6,566	4.0
Long Lake	10,578	10,750	11,770	11,544	12,267	12,874	12,437	12,423	11,860	14,157	19.4
Moose Lake	1,322	1,274	1,037	732	753	1,084	1,047	1,241	1,680	1,161	-30.9
Sir Winston Churchill	3,797	3,629	4,075	3,736	4,024	3,865	3,296	3,497	2,799	3,496	24.9
Whitney Lakes	2,372	2,693	2,216	1,860	2,070	1,988	2,212	2,569	3,643	2,557	-29.8
- Ross Lake	1,721	1,995	1,800	1,473	1,716	1,566	1,742	2,139	3,177	2,153	-32.2
- Whitney Lake	651	698	416	387	354	422	470	430	466	404	-13.3
<i>Provincial Recreation Areas</i>											
Beaver Lake	4,321	3,766	2,954	2,651	2,182	2,689	3,188	2,536	2,530	2,625	3.8
Crane Lake East	903	922	1,088	1,085	984	1,133	1,160	1,120	1,245	1,128	-9.4

95 As of 1996/97, reported to Dickson Dam area levels. - No Data
N/A Not Applicable

**Summary of Historic Camping Use - 1989/90 To 1998/99
(Occupied Campsite Nights)**

Northeast Boreal Region (continued)	1989/90	1990/91	1991/92	1992/93	1993/94	1994/95	1995/96	1996/97	1997/98	1998/99	% Change From Last Year
Crane Lake West	885	1,005	1,137	959	1,161	1,217	1,250	1,340	1,290	1,252	-2.9
English Bay	1,145	1,251	1,571	1,524	1,627	1,615	1,616	1,378	1,035	1,454	40.5
Floatingstone Lake	1,854	1,927	1,307	992	765	691	581	513	499	610	22.2
Fork Lake	2,091	2,187	2,163	1,438	1,141	1,419	1,327	1,303	1,574	1,353	-14.0
Franchere Bay	7,163	6,783	5,858	4,788	4,695	3,998	4,422	4,249	4,594	4,392	-4.4
French Bay	409	313	507	448	416	500	436	643	–	604	N/A
Kehiwin	2,124	1,730	2,437	2,033	2,116	1,769	1,857	1,387	1,534	1,733	13.0
Lower Mann Lake	1,258	1,338	793	322	162	134	142	N/A	N/A	N/A	N/A
Muriel Lake	655	668	909	526	346	433	257	244	251	113	-55.0
North Buck Lake	4,880	4,583	4,528	3,709	3,881	3,753	3,551	3,686	3,707	4,225	14.0
Lakeland		7,246	7,847	8,078	8,579	8,563	8,837	8,026	6,383	3,455	-45.9
- Pinehurst Lake		3,600	3,964	3,769	3,831	3,666	3,526	3,219	2,893	3,427	18.5
- Touchwood Lake		1,737	2,136	2,669	3,532	3,733	4,200	3,730	2,946	2,452	-16.8
- Seibert Lake		964	926	927	658	712	593	725	235	1,003	NR
- Ironwood Lake		945	821	713	548	452	518	352	309	436	41.1
Hangingstone				532	1,150	1,235	1,043	898	257	123	-52.1
Hanmore Lake				654	1,035	1,246	811	926	888	1,333	50.1
Minnie Lake				162	264	88	147	173	222	106	-52.3
Wolf Lake							2,217	1,930	1,458	1,868	28.1
Engstrom							267	351	106	33	-68.9
Maqua							221	198	86	182	111.6

– No Data
N/A Not Applicable
NR Not Reported

**Summary of Historic Camping Use - 1989/90 To 1998/99
(Occupied Campsite Nights)**

	1989/90	1990/91	1991/92	1992/93	1993/94	1994/95	1995/96	1996/97	1997/98	1998/99	% Change From Last Year
Northwest Boreal Region	22,661	24,867	21,383	21,612	25,843	26,949	29,970	28,283	29,238	31,794	8.7
<i>Provincial Parks</i>											
Hilliard's Bay	4,017	4,083	3,669	3,730	3,083	3,014	3,742	2,938	3,243	2,887	-11.0
Queen Elizabeth	1,590	1,625	1,484	1,225	1,340	1,206	1,129	1,345	1,154	1,235	7.0
Lesser Slave Lake	4,405	4,831	4,241	4,221	5,001	5,516	5,697	3,959	3,473	4,722	36.0
Moonshine Lake	3,086	2,396	1,914	1,641	1,923	2,318	2,741	3,987	3,742	4,480	19.7
Notikewin	133	0	84	64	55	76	100	33	25	58	132.0
Saskatoon Island	3,027	4,717	3,712	3,618	5,014	5,159	5,904	5,550	6,273	7,184	14.5
Williamson	2,940	3,262	2,472	2,206	1,962	1,674	1,566	1,509	1,609	1,736	7.9
Winagami Lake	1,493	1,318	1,412	1,520	1,767	1,561	1,915	1,833	1,708	2,043	19.6
Young's Point	680	1,246	1,402	1,542	2,698	2,882	2,770	2,763	3,223	2,637	-18.2
Dunvegan	760	798	461	966	1,691	2,030	2,744	2,654	2,371	2,298	-3.1
<i>Provincial Recreation Areas</i>											
Twin Lakes	530	591	532	518	543	551	591	623	550	572	4.0
Figure Eight Lake				217	700	895	988	1,020	1,110	943	-15.0
Heart River Dam				144	66	67	83	69	127	50	-60.6
Simonette River									48	-	N/A
Smoky River									204	950	365.7
Waskahigan									378	-	N/A
Northern East Slopes Region	36,040	37,459	39,250	37,761	40,231	44,187	41,910	42,080	45,896	50,819	10.7
<i>Provincial Parks</i>											
Carson-Pegasus	12,141	12,616	13,553	12,300	13,662	14,554	14,965	14,002	13,115	13,639	4.0
William A. Switzer	4,636	4,312	4,508	4,808	4,668	5,829	5,353	6,015	6,388	6,105	-4.4
- Jarvis Lake	1,323	919	1,067	1,490	1,423	1,495	1,288	1,564	1,599	1,424	-10.9
- Cache	246	295	352	66	294	359	340	376	536	559	4.3
- Graveyard/Halfway	168	233	357	487	368	471	481	391	410	437	6.6
- Gregg Lake	2,899	2,865	2,729	2,760	2,583	3,504	3,244	3,664	3,843	3,685	-4.1
Pembina River	4,368	4,260	4,439	4,524	4,421	5,463	5,282	5,763	6,357	6,200	-2.5

- No Data
N/A Not Applicable

**Summary of Historic Camping Use - 1989/90 To 1998/99
(Occupied Campsite Nights)**

Northern East Slopes Region (continued)	1989/90	1990/91	1991/92	1992/93	1993/94	1994/95	1995/96	1996/97	1997/98	1998/99	% Change From Last Year
Thunder Lake	5,872	6,648	6,552	5,617	6,285	6,775	6,490	6,343	5,493	5,753	4.7
Wabamun Lake	9,023	9,623	10,198	9,633	9,587	9,195	7,407	7,850	7,456	10,253	37.5
<i>Provincial Recreation Areas</i>											
Gunn							629	565	509	823	61.7
Holmes Crossing				105	189	157	123	164	156	249	59.6
Big Berland									280	340	21.4
Fairfax Lake										948	N/A
Lovett River										241	N/A
Pembina Forks										296	N/A
Pierre Grey's Lakes									2,836	3,274	15.4
Rock Lake									1,282	1,594	24.3
Wildhorse 'Kinky Lake'									981	904	-7.8
Sulphur Gates										200	N/A
Southern East Slopes Region	158,019	153,984	149,323	140,425	158,304	184,132	166,511	172,709	197,425	195,914	-0.8
<i>Provincial Parks</i>											
Beauvais Lake	3,950	3,620	3,075	2,494	3,027	3,534	3,671	3,852	3,763	3,658	-2.8
Chain Lakes	2,975	2,529	2,135	1,675	2,140	2,831	2,825	3,664	3,321	3,301	-0.6
Crimson Lake	10,286	10,622	9,940	9,553	9,239	10,832	10,577	11,098	10,875	11,585	6.5
- Crimson Lake	8,727	9,038	8,662	8,211	7,838	8,939	8,644	8,988	9,215	9,808	6.4
- Twin Lakes	1,559	1,563	1,278	1,342	1,401	1,893	1,933	2,110	1,660	1,777	7.0
Police Outpost	984	604	552	2,241	1,680	2,266	2,907	2,952	3,040	2,618	-13.9
Willow Creek	3,199	2,870	2,491	2,560	2,492	2,663	395	2,159	2,026	1,871	-7.7
Elbow Sub-District	27,567	28,830	27,652	24,848	26,773	30,446	26,426	28,217	30,158	23,026	-23.6
- Gooseberry	4,585	4,212	4,114	3,795	3,868	4,180	3,963	4,136	4,636	4,170	-10.1
- Mclean Creek	9,361	10,412	9,460	9,143	10,206	11,102	9,553	10,686	11,308	7,822	-30.8
- Paddy's Flat	4,930	5,282	5,028	4,266	4,584	5,329	4,273	4,664	5,293	4,259	-19.5
- Beaver Flats	2,972	2,558	2,678	2,163	2,405	2,800	2,384	2,634	2,828	2,315	-18.1
- Little Elbow	4,937	5,428	5,390	4,888	5,090	5,628	5,618	5,242	5,806	4,357	-25.0

N/A Not Applicable

**Summary of Historic Camping Use - 1989/90 To 1998/99
(Occupied Campsite Nights)**

Southern East Slopes Region (continued)	1989/90	1990/91	1991/92	1992/93	1993/94	1994/95	1995/96	1996/97	1997/98	1998/99	% Change From Last Year
- Romulus Backcountry	202	169	161	60	483	118	296	0		–	N/A
- Tombstone Backcountry	247	315	258	151	218	425	232	202	3	–	N/A
- Big Elbow Backcountry	110	123	112	97	97	269	73	149	3	–	N/A
- Wildhorse Backcountry	36	24	27	14	28	51	1	4	0	–	N/A
Sheep Sub-District	6,394	6,411	6,762	5,992	7,510	8,305	9,168	8,202	8,130	6,577	-19.1
- North Fork					871	935	878	914	712	672	-5.6
-Mesa Butte Equestrian					376	450	432	365	364	405	11.3
- Sandy Mcnabb	2,285	2,259	2,268	2,138	2,411	2,497	3,028	2,779	2,732	2,244	-17.9
- Sandy Mcnabb Equestrian	1,155	1,159	1,281	1,094	784	969	778	794	962	655	-31.9
- Blue Rock	2,351	2,379	2,587	2,167	2,396	2,741	3,111	2,841	2,738	2,247	-17.9
- Blue Rock Equestrian	541	549	543	544	447	502	740	476	590	348	-41.0
- Three Point Backcountry					130	124	93	0	0	–	N/A
- Wolf Creek Backcountry	28	27	33	43	43	60	37	0	0	–	N/A
Highwood Sub-District	5,219	5,036	5,477	4,356	5,441	5,503	4,869	4,412	3,941	2,812	-28.6
- Strawberry Equestrian	998	983	861	860	1,615	1,075	1,420	305	329	240	-27.1
- Etherington Creek	1,588	1,650	1,554	1,244	1,321	1,697	1,951	1,571	1,498	1,112	-25.8
- Etherington Creek Equestrian	213	217	199	140	167	187	39	115	132	97	-26.5
- Cataract	1,789	1,682	1,570	1,314	1,490	1,618	648	1,631	1,421	1,106	-22.2
- Greenford			1,011	527	569	604	648	520	498	257	-48.4
Spray Lakes Sub-District	5,378	4,203	3,611	1,802	2,228	2,926	2,425	2,709	3,144	2,628	-16.4
Peter Lougheed Park Sub-District	30,492	31,067	31,024	27,062	29,087	33,505	35,365	33,721	34,152	35,047	2.6
- Canyon	2,690	2,480	2,444	2,649	2,053	2,287	2,606	2,710	2,605	2,626	0.8
- William Watson	552	620	480	495	628	685	792	634	613	433	-29.4
- Elkwood	7,451	7,572	7,531	6,617	6,705	7,640	8,187	7,975	7,973	8,354	4.8
- Boulton	8,859	8,721	7,604	6,554	7,777	8,477	9,078	7,948	8,303	8,773	5.7
- Lower Lake	4,189	4,618	4,468	3,558	4,113	5,337	5,625	5,641	5,594	6,114	9.3
- Mount Sarrail	1,014	1,096	1,109	796	945	1,087	1,242	1,308	1,213	1,445	19.1

– No Data
N/A Not Applicable

**Summary of Historic Camping Use - 1989/90 To 1998/99
(Occupied Campsite Nights)**

Southern East Slopes Region (continued)	1989/90	1990/91	1991/92	1992/93	1993/94	1994/95	1995/96	1996/97	1997/98	1998/99	% Change From Last Year
- Interlakes	3,926	3,842	3,983	3,246	3,826	4,569	4,584	4,532	4,720	4,907	4.0
- Elbow Lake Backcountry	204	298	714	528	386	588	329	773	703	334	-52.5
- Point Backcountry	368	542	932	930	641	1,253	1,058	632	700	531	-24.1
- Forks Backcountry	374	444	739	579	544	639	839	670	797	371	-53.5
- Three Island Lake Backcountry	362	540	496	352	434	445	427	317	465	357	-23.2
- Turbine Canyon Backcountry	234	208	272	315	229	258	361	308	288	248	-13.9
- Aster Backcountry						57	14	44	66	139	110.6
Sibbald Sub-District	3,253	3,115	3,665	2,940	3,674	4,053	5,015	4,935	4,197	4,448	6.0
- Sibbald Lake	3,221	3,092	3,649	2,899	3,608	3,976	4,938	4,847	4,059	4,341	6.9
- Dawson Cr. Equestrian	32	23	16	41	66	61	77	88	92	74	-19.6
Trans Canada Sub-District	21,204	19,327	17,440	16,115	19,441	19,840	19,532	21,238	21,430	23,566	10.0
- Willow Rock	6,321	5,342	4,560	3,995	4,767	3,913	4,538	4,577	4,599	5,426	18.0
- Bow Valley	8,660	8,395	7,877	7,220	8,137	9,024	8,503	9,968	8,978	11,028	22.8
- Lac Des Arcs	1,496	1,554	1,243	1,083	1,302	1,343	1,444	1,306	1,204	1,384	15.0
- Three Sisters	3,038	2,638	2,487	2,425	3,138	3,204	3,214	3,223	3,553	3,483	-2.0
- Bow River	1,682	1,398	1,259	1,190	1,671	1,797	1,825	1,873	1,912	2,245	17.4
- Quaiite Valley Backcountry				202	426	550	0	291	1,114	-	N/A
Highway #40 Sub-District	29,668	29,102	28,719	28,302	30,626	42,131	31,914	31,574	32,627	23,967	-26.5
- Mount Kidd RV	26,248	25,837	25,776	25,132	26,350	35,763	26,864	25,292	24,057	20,894	-13.1
- Eau Claire	2,678	2,804	2,564	2,200	2,575	3,209	3,308	3,060	2,994	3,073	2.6
- Sundance Lodge					1,015	1,319	1,742	1,926	-	-	N/A
- Lusk Pass								107	784	-	N/A
- Ribbon Falls Backcountry	252	134	196	326	223	492	0	272	1,018	-	N/A
- Ribbon Lake Backcountry	244	133	108	362	173	462	0	342	1,072	-	N/A
- Lillian Lake Backcountry	246	194	75	282	290	724	0	400	2,033	-	N/A
- Jewel Bay Backcountry						161	0	171	669	-	N/A

- No Data
N/A Not Applicable

**Summary of Historic Camping Use - 1989/90 To 1998/99
(Occupied Campsite Nights)**

Southern East Slopes Region (continued)	1989/90	1990/91	1991/92	1992/93	1993/94	1994/95	1995/96	1996/97	1997/98	1998/99	% Change From Last Year
<i>Provincial Recreation Areas</i>											
Castle River	340	303	267	209	354	479	20	6	252	220	-12.7
Fallen Timber	439	382	478	428	276	244	303	303	202	430	112.9
James River Bridge	221	189	213	360	86	102	100	87	93	119	28.0
Lundbreck Falls	3,668	3,392	3,862	3,452	3,492	3,889	4,414	4,506	4,418	4,257	-3.6
Raven	413	286	115	168	164	144	172	162	126	110	-12.7
Tay River	1,074	623	354	552	780	474	448	444	450	429	-4.7
Ghost Reservoir	778	953	695	832	806	779	-	-	-	-	N/A
Leslieville										132	N/A
Old Man River				1,788	2,310	1,649	1,297	2,140	2,019	1,906	-5.6
Payne				664	1,818	1,388	1,027	2,243	2,733	1,842	-32.6
Waterton				24	37	103	903	99	88	95	8.0
Indian Graves	517	520	796	568	646	668	538	476	450	425	-5.6
Island Lake				646	624	473	500	719	917	1,121	22.2
Maycroft				93	62	110	200	263	340	130	-61.8
Old Man River Dam				701	3,491	4,795	1,500	2,798	3,194	3,224	0.9
- Cottonwood				701	2,624	3,258	381	1,692	1,990	2,188	9.9
- Chinook					203	379	478	541	525	452	-13.9
- Island View					664	1,158	641	565	553	413	-25.3
- Windy Point									126	171	35.7
Alymer									80	90	12.5
Beaverdam									183	332	81.4
Blackstone									114	220	93.0
Brazeau Reservoir										2,322	N/A
- Reservoir										1,074	N/A
- West Canal										861	N/A
- East Canal										178	N/A

- No Data
N/A Not Applicable

**Summary of Historic Camping Use - 1989/90 To 1998/99
(Occupied Campsite Nights)**

Southern East Slopes Region (continued)	1989/90	1990/91	1991/92	1992/93	1993/94	1994/95	1995/96	1996/97	1997/98	1998/99	% Change From Last Year
Brazeau River									219	253	15.5
Brown Creek									274	587	114.2
Cartier Creek										69	N/A
Chambers Creek									1,251	1,697	35.7
Crescent Falls									1,383	1,773	28.2
Dry Haven									402	450	11.9
Dutch Creek									1,540	1,822	18.3
Elk Creek										219	N/A
Fish Lake									4,144	5,276	27.3
Goldeye Lake									1,939	2,266	16.9
Harlech									631	715	13.3
Horborg									241	289	19.9
Jackfish Lake									346	518	49.7
James Wilson										257	N/A
Kootenay Plains									1,811	2,150	18.7
Livingstone Falls									905	1,056	16.7
Mitchell Creek										42	N/A
North Ram River									464	545	17.5
Oldman River North									303	357	17.8
Peppers Lake										1,260	N/A
Phyllis Lake										467	N/A
Prairie Creek										1,489	N/A
Racehorse									917	1,086	18.4
Ram Falls										1,789	N/A
Red Deer River										432	N/A
Saunders									196	178	-9.2
Seven Mile										422	N/A
Shunda Viewpoint									190	246	29.5

N/A Not Applicable

**Summary of Historic Camping Use - 1989/90 To 1998/99
(Occupied Campsite Nights)**

Southern East Slopes Region (continued)	1989/90	1990/91	1991/92	1992/93	1993/94	1994/95	1995/96	1996/97	1997/98	1998/99	% Change From Last Year
South Fork										174	N/A
Strachan										976	N/A
Swan Lake										760	N/A
Thompson Creek									2,851	2,710	-4.9
Upper Shunda Creek									833	935	12.2
Elk River									122	141	15.6

N/A Not Applicable

**Summary of Historic Group Camping Use - 1989/90 To 1998/99
(Group Unit Nights)**

	1989/90	1990/91	1991/92	1992/93	1993/94	1994/95	1995/96	1996/97	1997/98	1998/99	% Change From Last Year
Prairie Region	3,459	3,470	3,930	3,841	4,968	5,167	5,591	4,742	5,292	3,035	-42.6
<i>Provincial Parks</i>											
Cypress Hills	1,320	1,195	1,354	1,357	2,130	1,932	2,190	1,207	1,377	1,450	5.3
- Hwy. #41	247	266	216	338	459	352	322	188	163	109	-33.1
- Main	755	707	869	704	1,270	1,221	1,246	736	382	411	7.6
- Willow Creek Equestrian.	318	222	269	315	401	359	622	283	432	280	-35.2
- Old Girl Guide									400	650	62.5
Dinosaur						259	373	699	492	429	-12.8
Wyndham-Carseland	1,292	1,220	1,047	882	1,136	1,091	1,281	1,128	1,099	99	-91.0
- Carseland A	475	358	329	277	358	305	327	356	310	36	-88.4
- Carseland B	269	288	245	212	283	285	405	264	265	36	-86.4
- Carseland C	548	574	473	393	495	501	549	508	524	27	-94.8
Gooseberry Lake	416	512	416	427	285	179	231	118	348	175	-49.7
- Gooseberry Lake Area A	416	512	175	244	206	144	170	90	290	81	-72.1
- Gooseberry Lake Area B			77	71	52	8	32	0	58	94	62.1
Kinbrook Island										8	N/A
Little Bow						180	133	418	475	322	-32.2
Park Lake			322	462	602	524	574	409	737	105	-85.8
- Park Lake Area A			225	303	330	342	331	235	301	71	-76.4
- Park Lake Area B			97	159	272	182	243	174	436	34	-92.2
Taber	380	495	556	306	309	207	81	149	183	1	NR
- Old Man A	201	285	272	249	229	159	57	54	76	0	NR
- Old Man B	179	210	284	57	80	48	24	95	107	1	NR
Woolford	51	48	55	75	3	42	61	22	64	30	-53.1
Writing-On-Stone			180	332	456	584	520	521	483	416	-13.9
<i>Provincial Recreation Areas</i>											
St. Mary's					47	169	147	71	34	N/A	NR

N/A Not Applicable
NR Not Reported

**Summary of Historic Group Camping Use - 1989/90 To 1998/99
(Group Unit Nights)**

	1989/90	1990/91	1991/92	1992/93	1993/94	1994/95	1995/96	1996/97	1997/98	1998/99	% Change From Last Year
Parkland Region	2,861	3,646	2,968	3,610	4,708	4,484	5,213	6,215	6,502	4,325	-33.5
<i>Provincial Parks</i>											
Aspen Beach	517	553	428	425	384	503	832	1,368	1,185	–	N/A
- Aspen Beach A	290	328	202	288	245	250	341	375	513	–	N/A
- Aspen Beach B	227	225	226	137	139	253	282	535	427	–	N/A
- Aspen Beach C							209	461	245	–	N/A
Dillberry Lake			35	59	214	133	23	22	39	10	-74.4
Miquelon Lake	1,054	1,135	955	1,485	2,227	2,246	2,593	2565	3,266	2,062	-36.9
- Miquelon Lake 1	304	365	284	395	484	540	579	668	534	448	-16.1
- Miquelon Lake 2	750	770	671	809	168	160	122	184	186	122	-34.4
- Miquelon Lake 3				117	135	158	157	126	138	92	-33.3
- Miquelon Lake 4				0	156	204	135	196	226	196	-13.3
- Miquelon Lake 5				77	157	188	241	266	262	82	-68.7
- Miquelon Lake 6				87	788	651	817	731	1,632	863	-47.1
- Miquelon Lake 7					339	345	542	394	288	259	-10.1
Rochon Sands	182	319	166	262	229	198	185	264	217	–	N/A
Pigeon Lake	954	1,289	1,365	1,169	1,493	1,237	1,299	1,292	1,253	1,416	13.0
- Pigeon Lake - A	470	502	440	232	310	313	462	273	271	471	73.8
- Pigeon Lake - B	164	372	272	275	455	272	211	476	238	324	36.1
- Pigeon Lake - C			224	289	315	346	311	288	386	403	4.4
- Pigeon Lake - D	320	415	429	373	413	306	315	255	358	218	-39.1
Vermilion	154	350	19	210	161	167	281	680	259	410	58.3
- Vermilion A	45	31	0	35	14	78	152	135	68	212	211.8
- Vermilion B	27	34	13	46	0	21	57	165	80	87	8.7
- Vermilion C	54	159	6	87	52	38	60	114	72	111	54.2
- Vermilion D								50	23	–	N/A
- West	28	126	0	42	95	30	12	216	16	–	N/A

– No Data
N/A Not Applicable

**Summary of Historic Group Camping Use - 1989/90 To 1998/99
(Group Unit Nights)**

Parkland Region (continued)	1989/90	1990/91	1991/92	1992/93	1993/94	1994/95	1995/96	1996/97	1997/98	1998/99	% Change From Last Year
<i>Provincial Recreation Areas</i>											
Dickson Dam - S B L Group								24	283	427	50.9
- Dickson Dam-S.B.L.*									132	151	14.4
- Dickson Dam-N.B.L.*								24	151	276	82.8
Northeast Boreal Region	1,295	1,812	1,598	1,487	1,453	1,672	1,679	1,659	1,677	1,164	-30.6
<i>Provincial Parks</i>											
Cross Lake	341	423	377	409	440	397	371	258	354	232	-34.5
Cold Lake	236	78	205	220	171	202	140	194	107	186	73.8
Gregoire Lake	158	108	232	171	169	296	227	179	236	-	N/A
Long Lake	279	374	420	445	435	548	685	756	729	740	1.5
- Long Lake A	279	374	420	445	435	404	488	475	541	470	-13.1
- Long Lake B						144	197	281	188	270	43.6
Moose Lake			20	34	36	75	51	47	80	-	N/A
Whitney Lakes	281	732	240	163	172	154	205	209	150	6	-96.0
- Ross Lake G	256	282	194	113	154	116	181	170	122	6	-95.1
- Ross Lake H	25	450	46	50	18	38	24	39	28	-	N/A
<i>Provincial Recreation Areas</i>											
Beaver Lake									0		
Floatingstone Lake								16	21	-	N/A
Northwest Boreal Region	2,029	2,109	1,992	2,446	2,419	2,667	2,642	2,644	2,771	2,710	-2.2
<i>Provincial Parks</i>											
Hilliard's Bay	518	668	594	692	459	377	599	614	575	558	-3.0
- Area A	262	269	335	414	272	121	398	315	357	297	-16.8
- Area B	90	102	66	94	79	75	48	125	76	137	80.3
- Area C	166	297	193	184	108	181	153	174	142	124	-12.7
Queen Elizabeth								59	228	-	N/A

- No Data
N/A Not Applicable

**Summary of Historic Group Camping Use - 1989/90 To 1998/99
(Group Unit Nights)**

Northwest Boreal Region (continued)	1989/90	1990/91	1991/92	1992/93	1993/94	1994/95	1995/96	1996/97	1997/98	1998/99	% Change From Last Year	
Lesser Slave Lake	663	756	671	538	700	632	845	653	394	924	134.5	
- Lily Creek	296	368	243	288	307	265	437	352	198	249	25.8	
- Marten River Youth Camp	352	353	400	233	347	307	408	301	176	576	227.3	
- Golf Course	15	35	28	17	46	60	0	0	20	99	395.0	
Moonshine Lake	467	214	131	312	405	224	201	180	284	62	-78.2	
Saskatoon Island	258	284	313	374	379	451	340	534	654	472	-27.8	
Winagami Lake	123	187	201	221	207	532	251	293	281	274	-2.5	
Young's Point			82	309	269	451	406	311	355	420	18.3	
Northern East Slopes Region	2,020	2,973	2,882	3,133	3,461	3,334	3,067	3,508	2,807	2,878	2.5	
Provincial Parks												
Carson-Pegasus	577	639	735	832	699	779	565	645	590	897	52.0	
William A. Switzer	489	938	826	660	863	694	829	852	839	250	-70.2	
- Beaver Ranch	195	143	233	24	121	187	164	81	148	36	-75.7	
- Nordic Centre									219	0	0	N/A
- Pine Bay	294	795	593	636	742	507	665	552	691	214	-69.0	
Pembina River	300	322	344	325	381	399	492	515	389	351	-9.8	
Thunder Lake	358	681	605	801	693	887	756	830	578	1,365	136.2	
- Island View							533	778	476	906	90.3	
- Group Area E							223	52	102	459	350.0	
Wabamun Lake	296	393	372	515	825	575	425	666	416	-	N/A	
- Wabamun Lake - A	146	138	172	218	236	158	193	231	96	-	N/A	
- Wabamun Lake - B	150	255	200	297	589	417	232	390	315	-	N/A	
Provincial Recreation Areas												
Wildhay Group										15	N/A	
Southern East Slopes Region	9,549	9,800	9,088	10,012	11,235	10,506	18,916	9,541	9,009	10,438	15.9	
Provincial Parks												
Beauvais Lake	366	621	484	385	553	420	441	35	473	590	24.7	

- No Data
N/A Not Applicable

**Summary of Historic Group Camping Use - 1989/90 To 1998/99
(Group Unit Nights)**

Southern East Slopes Region (continued)	1989/90	1990/91	1991/92	1992/93	1993/94	1994/95	1995/96	1996/97	1997/98	1998/99	% Change From Last Year
Chain Lakes	514	505	367	677	436	516	461	1,111	545	508	-6.8
Crimson Lake	480	630	435	703	658	508	719	1,045	788	1,498	90.1
- Crimson Lake								392	229	850	271.2
- Twin Lakes								653	559	648	15.9
Elbow Sub-District	1,676	824	1,116	1,582	1,545	1,440	1,450	1,347	1,806	1,069	-40.8
- Paddy's Flat	755	745	765	632	657	563	884	845	814	435	-46.6
- River Cove	921	79	351	950	888	877	566	502	992	634	-36.1
Sheep Sub-District	1,268	1,292	1,166	1,117	1,875	1,625	1,313	1,234	1,618	958	-40.8
- Mesa Butte Equestrian					487	281	170	272	126	144	14.3
- Sandy McNabb A	705	712	732	615	714	657	575	512	817	391	-52.1
- Sandy McNabb B	563	580	434	502	674	687	568	450	675	423	-37.3
Highwood Sub-District	926	1,374	1,150	1,035	1,151	963	486	907	982	519	-47.1
- Etherington Creek	465	480	520	606	489	453	286	480	322	229	-28.9
- Highwood River	461	894	630	429	662	510	200	427	660	290	-56.1
Peter Lougheed Park Sub-District	1,614	1,564	1,281	1,475	1,906	1,376	1,120	1,331	1,687	1,807	7.1
- Lower Lake	966	958	853	866	1,047	826	341	355	1,069	1,187	11.0
- Pocaterra	648	606	428	609	859	550	779	976	618	620	0.3
Sibbald Sub-District	1,390	1,928	1,536	1,805	1,931	1,461	1,478	1,089	0	-	N/A
- Pine Grove A	796	797	822	1,098	1,062	750	709	552	0	-	N/A
- Pine Grove B	594	1,131	714	707	869	711	769	537	0	-	N/A
Trans Canada Sub-District	544	830	831	648	183	1,218	10,918	525	0	-	N/A
- Grouse	544	830	831	648	142	755	259	295	0	-	N/A
- Old Church Camp/Owl					41	463	10,659	230	0	-	N/A
Highway #40 Sub-District	771	1,056	722	585	997	795	530	533	0	69	N/A
- Canoe Meadows	251	335	304	244	332	327	282	122	0	-	N/A
- Porcupine	520	721	418	301	414	391	55	277	0	-	N/A
- Stony Creek				40	251	77	193	134	0	69	N/A

- No Data
N/A Not Applicable

**Summary of Historic Group Camping Use - 1989/90 To 1998/99
(Group Unit Nights)**

Southern East Slopes Region (continued)	1989/90	1990/91	1991/92	1992/93	1993/94	1994/95	1995/96	1996/97	1997/98	1998/99	% Change From Last Year
<i>Provincial Recreation Areas</i>											
Old Man River Dam						184	0	384	421	771	83.1
Chambers Creek									398	406	2.0
Kootenay Plains										1,622	N/A
Old Man River North									23	17	-26.1
Prairie Creek Group										251	N/A
Snow Creek									268	353	31.7

N/A Not Applicable

**Summary of Historic Day Use - 1989/90 To 1998/99
(Day Use Party Visits)**

	1989/90	1990/91	1991/92	1992/93	1993/94	1994/95	1995/96	1996/97	1997/98	1998/99	% Change From Last Year
Prairie Region	315,313	337,620	320,900	310,285	371,200	380,050	345,725	361,375	387,275	330,565	-14.6
<i>Provincial Parks</i>											
Cypress Hills	61,220	57,225	60,225	56,725	58,175	63,875	57,350	58,675	57,650	61,125	6.0
- Elkwater Townsite	50,420	46,175	49,625	48,325	49,875	54,800	48,475	49,700	48,725	52,550	7.9
- Reesor Lake/Spruce Coulee	11,900	11,325	10,925	8,875	8,750	9,550	9,200	9,325	9,500	8,975	-5.5
Dinosaur	12,275	11,300	11,050	11,650	13,475	13,500	14,700	12,550	13,550	14,600	7.7
Dry Island Buffalo Jump	2,950	2,775	3,125	3,385	3,275	3,075	3,625	3,450	3,650	3,975	8.9
Wyndham-Carseland	14,426	20,095	17,675	15,900	21,325	15,200	16,150	17,125	18,000	17,560	-2.4
- Wyndham-Main	8,470	10,000	10,075	9,150	11,775	10,800	9,175	9,825	9,550	-	N/A
- Wyndham-Johnson Island	4,255	4,000	4,600	3,800	4,525	2,650	4,200	4,750	4,525	-	N/A
- Wyndham-Weir	1,625	6,075	3,025	3,050	5,025	1,200	2,825	2,675	3,975	-	N/A
Gooseberry Lake	6,390	5,800	5,575	5,925	3,550	2,525	3,300	1,975	3,050	3,325	9.0
Kinbrook Island	26,549	21,600	21,025	23,200	27,550	32,975	30,775	20,725	29,475	25,500	-13.5
Little Bow	10,430	13,275	12,100	10,200	11,200	13,400	11,700	9,925	9,925	11,230	13.1
Little Fish Lake	450	0	0	0	0	950	875	975	700	425	-39.3
Midland	145,640	136,950	122,075	119,300	143,325	134,875	115,500	138,325	163,125	126,275	-22.6
- Mine Site 1 2 3	4,490	4,150	5,400	4,800	5,375	4,650	5,575	5,350	4,800	7,375	53.6
- McMullen Island	8,325	8,500	8,625	7,400	8,100	9,079	7,350	8,575	8,450	11,825	39.9
- Tyrell Museum	141,375	132,225	116,325	114,900	138,625	130,075	110,400	133,150	158,450	117,700	-25.7
Park Lake	0	32,400	37,525	33,550	31,800	43,775	38,125	41,175	39,900	28,775	-27.9
- Park Lake-Boat Launch	0	5,025	4,475	3,825	3,660	5,925	6,375	7,425	7,100	4,400	-38.0
- Park Lake-Main Area	0	27,500	33,125	29,800	28,025	37,900	31,750	33,675	32,650	24,425	-25.2
Taber	19,710	14,475	12,750	10,675	10,175	11,275	1,750	7,125	10,325	6,900	-33.2
Tillebrook	7,688	10,200	5,875	5,425	8,600	12,650	8,250	8,250	8,050	6,525	-18.9
Woolford	830	700	625	600	1,300	975	2,100	1,800	1,400	1,375	-1.8
Writing-On-Stone	4,025	7,875	7,700	7,100	8,700	9,100	10,125	10,225	8,525	8,875	4.1

- No Data
N/A Not Applicable

**Summary of Historic Day Use - 1989/90 To 1998/99
(Day Use Party Visits)**

Prairie Region (continued)	1989/90	1990/91	1991/92	1992/93	1993/94	1994/95	1995/96	1996/97	1997/98	1998/99	% Change From Last Year
<i>Provincial Recreation Areas</i>											
Bleriot Ferry	50	0	0	575	5,075	5,125	6,425	7,200	6,725	7,550	12.3
Tolman Bridge	2,680	2,950	3,575	4,425	4,925	5,575	8,950	6,700	6,725	6,550	-2.6
- Tolman Bridge East	2,175	0	4,050	4,600	4,225	5,525	5,425	5,175	5,350	4,600	-14.0
- Tolman Bridge West	830	0	0	300	1,150	1,550	4,375	2,275	2,125	2,775	30.6
Travers Dam						2,450	-	-	-	-	N/A
St. Mary's					5,100	8,750	9,750	7,450	6,550	-	N/A
McGregor Reservoir				1,650	13,650	-	6,275	7,725	-	-	N/A
Parkland Region	194,894	229,925	240,650	221,675	275,795	228,894	173,575	192,125	193,125	239,335	23.9
<i>Provincial Parks</i>											
Aspen Beach	38,150	38,575	32,450	32,425	68,200	71,300	58,025	68,425	71,575	62,575	-12.6
- Brewer's Beach	0	3,275	3,100	3,425	10,225	2,250	4,025	3,125	3,250	-	N/A
- Ebeling Beach	33,030	35,325	29,350	29,600	57,975	69,025	53,975	65,350	68,375	62,575	-8.5
Big Knife	4,840	5,000	4,075	3,025	4,050	50	3,450	3,150	2,900	3,400	17.2
Dillberry Lake	7,000	7,025	6,550	6,250	6,050	6,425	5,725	4,300	4,775	4,125	-13.6
Ma-Me-O Beach	3,225	2,975	2,950	3,075	2,650	2,750	1,875	-	-	-	N/A
Miquelon Lake	25,630	30,450	26,575	15,600	20,875	27,900	25,675	26,700	27,625	30,350	9.9
Rochon Sands	7,855	7,750	6,650	5,925	5,975	6,700	4,800	9,200	8,975	6,275	-30.1
Pigeon Lake	11,374	15,700	13,600	13,175	13,450	12,525	11,525	12,000	10,100	11,920	18.0
- Pigeon Lake	7,770	10,950	9,575	9,075	8,725	8,475	8,225	7,650	5,825	-	N/A
- Zeiner	3,630	4,825	3,975	4,700	4,725	4,000	3,325	4,375	4,300	-	N/A
Red Lodge	6,320	5,475	11,650	11,325	11,325	-	-	-	6,300	6,725	6.7
Sylvan Lake	51,750	79,500	94,825	71,700	79,950	47,457	6,275	20,575	28,400	75,545	166.0
Vermilion	21,270	19,925	20,500	17,975	15,800	7,212	9,650	8,400	10,725	14,275	33.1
<i>Provincial Recreation Areas</i>											
Buffalo Lake	2,395	1,400	2,300	475	2,225	1,675	2,550	3,200	2,725	3,625	33.0
The Narrows	3,900	1,900	2,725	2,625	2,200	2,075	8,600	4,125	2,900	2,325	-19.8

- No Data
N/A Not Applicable

**Summary of Historic Day Use - 1989/90 To 1998/99
(Day Use Party Visits)**

Parkland Region (continued)	1989/90	1990/91	1991/92	1992/93	1993/94	1994/95	1995/96	1996/97	1997/98	1998/99	% Change From Last Year
Cooking Lake-Blackfoot	11,185	12,950	13,225	21,525	24,925	31,625	18,200	17,800	13,550	15,975	17.9
- Central	2,447	2,950	2,500	2,550	2,625	2,825	1,375	1,700	2,550	2,025	-20.6
- Waskahegan	3,235	5,750	9,225	18,675	18,850	24,775	14,000	12,150	7,475	10,200	36.5
- Islet Lake	1,510	2,900	3,325	2,875	1,775	2,925	2,300	2,775	2,375	3,125	31.6
- Blackfoot Lake	875	1,525	1,725	2,075	1,850	1,550	1,400	2,425	1,475	1,875	27.1
Calhoun Bay		1,300	2,575	2,475	2,250	1,900	1,900	-	2,575	2,220	-13.8
Northeast Boreal Region	199,680	206,025	203,850	213,000	188,413	197,975	183,775	177,400	168,425	177,376	5.3
<i>Provincial Parks</i>											
Calling Lake	4,650	3,550	3,700	4,225	2,925	3,075	3,250	-	-	-	N/A
Cross Lake	4,620	3,550	5,025	5,475	5,100	4,550	4,700	5,275	7,550	6,875	-8.9
Cold Lake	16,330	12,825	12,150	10,050	10,375	15,650	13,825	14,025	14,925	15,775	5.7
Garner Lake	6,230	8,475	9,850	8,050	8,100	9,550	9,175	9,850	5,700	5,725	0.4
Gregoire Lake	32,620	33,350	28,575	35,350	30,275	29,775	26,325	31,150	32,000	30,925	-3.4
- Anzac	6,695	5,425	650	7,200	5,775	6,375	6,100	7,875	7,975	7,525	-5.6
- Gregoire Lake	26,085	27,950	27,950	28,150	24,375	23,425	20,150	23,400	24,025	23,475	-2.3
Long Lake	9,015	8,475	8,550	8,850	8,325	9,500	9,125	9,275	8,275	10,050	21.5
Moose Lake	3,100	2,625	3,250	2,575	2,600	2,875	2,900	3,100	1,600	2,615	63.4
Sir Winston Churchill	14,400	13,950	14,100	30,575	21,775	12,300	10,225	11,425	12,800	13,705	7.1
Whitney Lakes	5,205	5,550	5,150	4,675	4,100	3,350	3,950	3,525	5,350	3,750	-29.9
- Ross Lake	3,555	2,975	2,625	2,300	2,175	2,000	2,225	2,225	3,100	1,975	-36.3
- Whitney Lake	780	450	400	575	525	225	-	100	175	175	0.0
- Ernie's Point	2,465	2,425	2,150	1,825	1,445	1,150	1,475	1,150	2,075	1,475	-28.9
<i>Provincial Recreation Areas</i>											
Beaver Lake	10,120	13,275	13,600	11,475	10,675	13,000	12,525	9,350	8,325	10,775	29.4
Crane Lake East	3,865	4,775	5,300	6,475	5,515	6,075	6,225	6,800	9,325	6,788	-27.2
Crane Lake West	5,010	6,575	6,125	7,150	7,225	7,550	7,925	7,975	8,950	7,925	-11.5
English Bay	2,855	3,575	3,625	3,275	3,625	3,650	3,775	3,175	2,500	3,345	33.8

- No Data
N/A Not Applicable

**Summary of Historic Day Use - 1989/90 To 1998/99
(Day Use Party Visits)**

Northeast Boreal Region (continued)	1989/90	1990/91	1991/92	1992/93	1993/94	1994/95	1995/96	1996/97	1997/98	1998/99	% Change From Last Year
Floatingstone Lake	6,690	6,225	6,175	5,125	4,075	4,375	3,175	3,850	3,450	3,785	9.7
Fork Lake	3,555	3,725	3,925	3,050	2,900	2,500	2,750	2,750	4,900	3,160	-35.5
Franchere Bay	7,435	11,300	8,525	9,425	9,225	8,425	7,525	7,125	6,775	7,815	15.4
French Bay	3,805	4,500	5,475	5,075	5,125	4,700	4,200	4,425	-	-	N/A
Kehiwin	10,270	7,575	11,075	9,450	10,875	7,325	10,075	9,175	7,975	9,085	13.9
Lower Mann Lake	6,300	6,125	6,450	4,450	4,900	4,200	4,100	2,525	3,500	3,845	9.9
Muriel Lake	4,480	5,800	6,775	5,150	4,200	4,675	3,000	4,900	4,450	4,245	-4.6
North Buck Lake	29,825	30,500	26,025	23,050	15,875	18,450	14,500	17,325	12,875	17,550	36.3
Hangingstone						7,225	4,500	4,575	4,175	5,119	22.6
Hanmore Lake					75	3,650	3,550	2,800	1,325	2,025	52.8
Minnie Lake						1,575	3,675	3,025	1,700	2,494	46.7
Northwest Boreal Region	118,100	113,475	93,926	106,725	119,110	113,280	117,000	112,725	102,225	106,259	3.9
<i>Provincial Parks</i>											
Hilliard's Bay	14,115	14,850	18,650	14,625	13,835	12,300	-	-	2,925	4,075	39.3
Queen Elizabeth (94)	4,000	4,125	4,925	4,825	4,650	4,750	8,675	8,825	8,700	7,075	-18.7
Lesser Slave Lake	20,155	22,325	13,700	19,425	20,625	17,675	18,575	15,000	10,500	17,125	63.1
- Marten River	2,190	2,250	2,000	2,000	2,075	2,575	2,450	2,275	2,025	1,875	-7.4
- Marten Mountain	3,435	2,925	2,050	2,525	1,700	575	2,500	1,825	2,500	2,825	13.0
- North Shore	17,545	20,850	17,275	17,375	19,925	16,125	16,900	13,850	8,000	16,375	104.7
Moonshine Lake	9,010	6,825	6,950	6,550	6,450	6,730	9,200	11,750	10,100	9,775	-3.2
Notikewin	1,125	875	625	875	850	800	1,450	600	1,000	940	-6.0
O'Brien	19,445	2,725	-	11,975	11,325	12,750	11,275	6,800	5,225	9,475	81.3
Saskatoon Island	18,105	27,425	21,951	27,400	25,025	25,875	29,425	29,450	28,975	29,075	0.3
Williamson	13,372	12,375	8,025	6,550	10,150	3,225	6,675	4,525	6,275	4,700	-25.1
Winagami Lake	5,050	5,000	6,050	6,050	7,525	7,775	9,300	7,275	4,925	6,700	36.0
Young's Point	2,555	4,100	3,600	3,550	3,225	3,450	3,250	4,025	4,725	2,450	-48.1

94 Day Use Calibration Program recalculated in 1995/96: Changes are not reflected for previous fiscal years.

- No Data

N/A Not Applicable

**Summary of Historic Day Use - 1989/90 To 1998/99
(Day Use Party Visits)**

Northwest Boreal Region (continued)	1989/90	1990/91	1991/92	1992/93	1993/94	1994/95	1995/96	1996/97	1997/98	1998/99	% Change From Last Year
Dunvegan	9,718	12,000	7,375	–	5,650	4,675	4,475	2,925	3,675	4,175	13.6
<i>Provincial Recreation Areas</i>											
Twin Lakes	1,450	850	2,075	2,550	1,550	1,200	1,650	2,220	2,350	1,794	-23.7
Figure Eight Lake				2,350	8,250	12,075	13,050	19,350	12,850	8,900	-30.7
Northern East Slopes Region	266,047	376,495	271,475	255,825	224,025	203,175	146,925	115,550	101,325	93,430	-7.8
<i>Provincial Parks</i>											
Carson-Pegasus	13,608	14,475	13,150	13,225	15,500	15,675	13,950	13,125	11,975	11,900	-0.6
William A. Switzer	8,095	6,800	7,100	7,100	8,050	9,100	9,850	9,000	11,650	9,530	-18.2
- Jarvis Lake	4,095	3,300	2,825	2,175	4,075	6,550	6,250	6,125	7,850	7,175	-8.6
- Gregg Lake	1,655	1,725	1,350	1,400	1,325	925	1,475	1,400	1,750	1,900	8.6
- Cache/Graveyard	1,940	875	825	3,050	2,475	1,450	1,450	1,425	1,600	1,525	-4.7
- Kelley's Bathtub	1,290	1,450	2,575	1,100	925	625	1,100	575	1,100	–	N/A
Hasse Lake	23,525	25,100	25,500	24,950	22,700	26,000	20,950	15,125	16,000	1,850	-88.4
Pembina River	13,930	13,350	14,500	16,400	13,600	14,550	15,400	16,475	17,275	18,225	5.5
Strathcona Science	137,114	136,045	134,075	109,250	87,025	14,400	–	6,175	–	–	N/A
Thunder Lake	29,130	24,625	28,450	27,275	18,950	29,500	25,500	19,575	17,000	18,275	7.5
- Thunder Lake-Boat Launch	8,500	12,100	14,150	13,575	7,475	10,925	13,950	8,450	6,825	7,425	8.8
- Thunder Lake-Main Area	20,730	12,675	14,275	13,775	11,500	18,625	11,725	11,200	10,200	10,950	7.4
Wabamun Lake	28,795	32,500	33,900	34,125	29,825	67,500	24,750	27,875	22,575	26,150	15.8
<i>Provincial Recreation Areas</i>											
Gunn				4,500	8,675	6,500	9,275	8,200	4,850	7,500	54.6
Southern East Slopes Region	1,372,789	1,509,010	1,593,624	1,468,410	1,660,275	1,656,975	1,585,280	1,763,875	1,602,925	1,670,825	4.2
<i>Provincial Parks</i>											
Beauvais Lake	9,210	8,375	9,550	8,225	12,200	12,000	13,525	12,800	6,450	5,300	-17.8
Big Hill Springs	14,875	14,800	17,050	11,900	11,100	6,150	–	–	–	–	N/A
Chain Lakes	10,140	8,350	6,915	6,550	9,575	10,075	9,150	6,600	7,450	9,200	23.5

– No Data
N/A Not Applicable

**Summary of Historic Day Use - 1989/90 To 1998/99
(Day Use Party Visits)**

Southern East Slopes Region (continued)	1989/90	1990/91	1991/92	1992/93	1993/94	1994/95	1995/96	1996/97	1997/98	1998/99	% Change From Last Year
Crimson Lake	15,405	13,500	12,400	15,325	14,425	11,575	17,450	17,725	-	-	N/A
- Crimson Lake	8,165	7,300	7,500	9,175	8,300	9,525	11,075	9,750	-	-	N/A
- Twin Lakes	7,140	4,300	4,975	6,150	6,125	2,025	6,225	7,975	-	-	N/A
Fish Creek	669,175	782,000	830,690	695,310	776,650	808,975	729,680	806,350	820,075	890,475	8.6
- Ranch Area	76,610	99,950	91,001	78,425	82,625	142,525	75,000	82,275	102,950	124,000	20.4
- Votier's Flats	79,545	68,675	79,250	65,675	77,075	60,875	59,075	58,700	65,175	65,100	-0.1
- Mallard Point	47,860	34,075	39,050	31,700	36,144	36,650	33,075	37,100	38,025	47,850	25.8
- Glennfield	99,815	99,325	103,125	96,325	120,350	110,450	109,845	110,025	136,325	150,050	10.1
- Shaw's Meadow	65,165	56,525	66,400	57,850	74,623	70,075	69,525	72,050	75,900	93,325	23.0
- Bankside/Burnsmead	58,360	36,125	39,275	34,800	37,200	42,925	39,200	48,900	34,525	35,825	3.8
- Sikome Lake/Hulls Wood	111,630	206,350	218,925	195,575	194,775	157,475	168,825	211,975	176,300	183,000	3.8
- Shannon Terrace	53,360	74,700	82,350	49,030	58,300	67,600	63,500	68,600	70,425	67,852	-3.7
- Bebo Grove	78,935	106,975	105,425	88,175	103,075	123,650	116,000	112,125	120,525	130,250	8.1
Police Outpost	2,550	2,000	2,825	6,300	4,900	6,300	8,875	8,875	7,925	5,550	-30.0
Willow Creek	7,740	4,075	2,450	2,775	2,600	4,425	2,775	5,075	7,650	4,075	-46.7
Elbow Sub-District	141,395	157,690	169,575	174,875	194,925	185,700	188,725	215,375	107,325	251,475	134.3
Sheep Sub-District	12,090	12,050	12,300	12,650	15,475	19,900	17,875	19,650	26,375	32,600	23.6
Highwood Sub-District	27,450	27,290	22,225	27,950	31,825	21,000	18,600	⚡	⚡	⚡	N/A
Spray Lakes Sub-District	28,145	26,885	45,750	33,725	29,500	23,500	20,075	25,475	23,475	20,725	-11.7
Peter Lougheed Park	67,480	55,405	49,900	96,975	101,275	96,100	100,700	107,850	91,700	82,250	-10.3
Sibbald Sub-District	28,631	26,460	50,218	27,975	60,625	29,425	26,750	41,675	⚡	⚡	N/A
Trans Canada S.D.	64,980	96,725	77,275	66,550	112,800	93,600	126,300	202,100	⚡	⚡	N/A
Highway #40 Sub-District	212,850	209,750	220,022	210,950	194,700	204,675	203,475	190,925	⚡	⚡	N/A
Canmore Sub-District	41,690	45,405	44,604	42,950	57,050	63,125	64,075	64,850	74,625	87,275	17.0

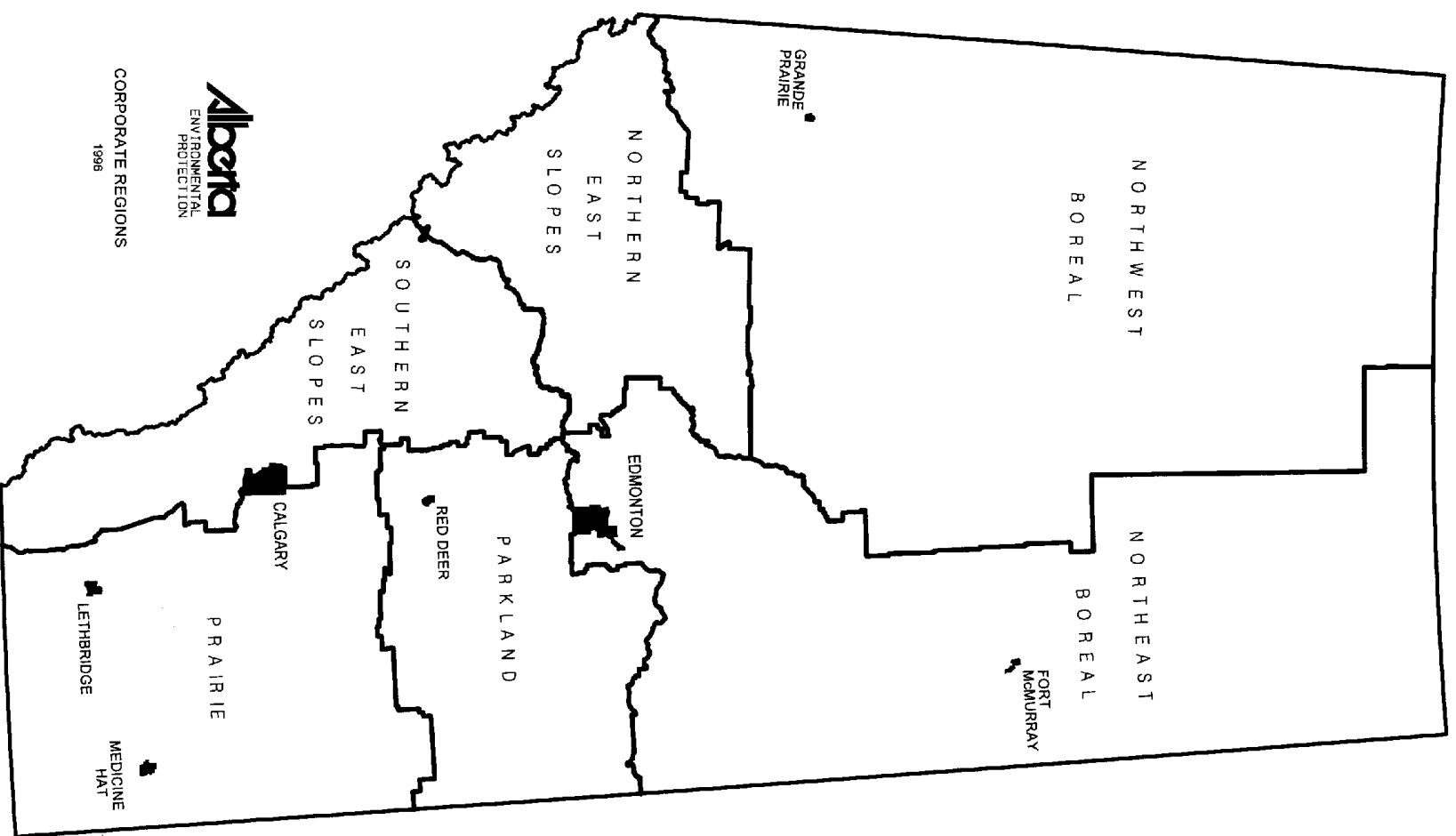
⚡ Data Incomplete
- No Data
N/A Not Applicable

**Summary of Historic Day Use - 1989/90 To 1998/99
(Day Use Party Visits)**

Southern East Slopes Region (continued)	1989/90	1990/91	1991/92	1992/93	1993/94	1994/95	1995/96	1996/97	1997/98	1998/99	% Change From Last Year
<i>Provincial Recreation Areas</i>											
Lundbreck Falls	-	-	-	1,050	9,425	25,975	24,525	23,725	21,900	20,750	-5.3
Payne				1,825	5,275	8,350	6,475	6,300	6,475	6,575	1.5
Waterton					1,025	5,950	4,050	5,325	-	-	N/A
Indian Graves					900	1,375	2,200	2,850	-	3,900	N/A
Island Lake					2,650	7,750	-	-	-	-	N/A

- No Data
N/A Not Applicable

Appendix



CORPORATE REGIONS
1996

Park or Recreation Area Name	Number Of Campsites	Facility Operator	Firewood Concession	Reservations	Water Hook-ups	Sewage Disposal	Electrical Hook-ups	Flush Toilets	Showers	Group Camping Area	Picnic Tables	Picnic Shelter	Fire pits	Water	Flush Toilets	Fishing	Fish Cleaning Station	Swimming	Change House	Beach	Playground	Horse Shoe Pits	Trails	Boating	Boat Launch	Hand Boat Launch	Park Office	Wheelchair Access	Public Phone	Food Concession	Boat Rentals	Interpretive Programs	
Allison		•									10	•	•	•									•										
Aylmer	7	•														•							•	•	•								
Aspen Beach	586	•		•		8	•	•	•	•	105		•	•	•	•	•	•	•	•	•	•	•	•	•		•	•	•	•	•	•	
Athabasca Lookout Nordic										•													•										
Beauvais Lake	95	•			•					•	37	•	•	•		•	•				•	•	•	•	•	•	•	•	•				
Beaver Creek											3		•			•							•										
Beaver Lake	89	•	\$					•	\$			•				•	•	•		•				•	•				•				
Beaver Lake Group Camp	80	•								•						•	•	•		•				•	•	•							
Beaver Mines Lake	97	•									5		•	•		•		•					•	•	•								
Beaver Dam	38	•									2	•	•			•							•										
Big Berland	12	•									6	•	•	•		•	•						•										
Big Hill Springs		•									4		•	•									•						•				
Big Knife	60				•						45		•	•		•		•			•	•		•	•		•	•	•				
Big Mountain Creek										•						•							•										
Bigelow Reservoir											5					•																	
Bison Flats Remote	7															•								•									
Blackstone	10	•									2	•	•			•							•	•									
Blackstone Viewpoint																•								•									
Bleriot Ferry	35															•		•						•									
Blue Bridge (Smoky River South)	22	•														•								•	•								
Brazeau Reservoir	57	•								•	18		•	•		•	•	•		•				•	•								
Brazeau River	7															•								•									
Brown Creek	9			•								•				•		•					•							•			
Brown Lowery																							•										
Buck Lake	27	•									10		•	•		•	•	•						•	•								
Buffalo Lake	40															•		•		•	•		•										
Bullshead Reservoir																•								•	•								
Burnt Timber	30	•														•							•										
Bustard Island Remote	2															•		•						•									
Calhoun Bay	50	•									5		•	•		•	•				•			•	•	•		•	•				

Park or Recreation Area Name	Number Of Campsites	Facility Operator	Firewood Concession	Reservations	Water Hook-ups	Sewage Disposal	Electrical Hook-ups	Flush Toilets	Showers	Group Camping Area	Picnic Tables	Picnic Shelter	Fire pits	Water	Flush Toilets	Fishing	Fish Cleaning Station	Swimming	Change House	Beach	Playground	Horse Shoe Pits	Trails	Boating	Boat Launch	Hand Boat Launch	Park Office	Wheelchair Access	Public Phone	Food Concession	Boat Rentals	Interpretive Programs
Calling Lake	25	•				•		•			10		•	•	•	•	•	•		•	•			•	•		•					
Calling River	4															•		•						•								
Cardinal River Divide																																
Carson - Pegasus	182	•	\$	•		•	•	•	\$	•	14		•	•	•	•	•	•		•	•	•	•	•	•	•	•	•	•	•	•	•
Cartier Creek	19	•														•								•								
Cascade Rapids	11															•		•						•								
Castle Falls	46	•									4		•	•		•							•	•								
Castle River	20	•	\$											•		•								•				•				
Castle River Bridge	30	•									2	•	•	•		•							•	•								
Chain Lakes	120	•			•					•	18			•		•					•	•		•	•		•	•	•			
Chambers Creek	26	•								•	2	•	•	•		•							•									
Chinook Lake	74	•									6	•	•	•		•		•					•	•								
Chisholm											•	•	•																			
Christina River	2															•		•						•								
Clausen's Landing	4															•								•								
Coal Lake North	10												•	•		•								•	•							
Coal Lake South	14		\$											•		•								•	•							
Coal Spur	8															•																
Cold Lake	117				•	•	•	\$	•	•	35		•	•	•	•	•	•	•	•	•	•	•	•	•	•	•	•	•	•	•	•
Coliseum																							•									
Cooking Lake/Blackfoot											60	•	•	•								•	•	•		•	•	•	•	•	•	•
Crane Lake East	26											•		•		•	•	•		•				•	•			•				
Crane Lake West	24											•		•		•	•	•		•				•	•			•	•			
Crescent Falls	26	•									6		•	•		•							•									
Crimson Lake	208	•		•	•	•	•	•	•	•	40	•	•	•		•	•	•		•	•	•	•	•	•	•	•	•	•	•	•	•
Cross Lake	130	•		•	•	•	•	\$	•	•	26		•	•		•	•	•	•	•	•	•	•	•	•	•	•	•	•	•	•	•
Crow Lake	17																							•								
Cutoff Creek Staging Area																•							•									
Cypress Hills	436	•	\$	•	•	•	•	•	\$	•	91	•		•	•	•	•	•	•	•	•	•	•	•	•	•	•	•	•	•	•	•
Deadhorse Meadows	5																															

Park or Recreation Area Name	Number Of Campsites	Facility Operator	Firewood Concession	Reservations	Water Hook-ups	Sewage Disposal	Electrical Hook-ups	Flush Toilets	Showers	Group Camping Area	Picnic Tables	Picnic Shelter	Fire pits	Water	Flush Toilets	Fishing	Fish Cleaning Station	Swimming	Change House	Beach	Playground	Horse Shoe Pits	Trails	Boating	Boat Launch	Hand Boat Launch	Park Office	Wheelchair Access	Public Phone	Food Concession	Boat Rentals	Interpretive Programs	
Deer Creek	3															•							•	•									
Dillberry Lake	235					•	•	•	•	0	135	•	•	•		•	•	•	•	•	•	•	•	•	•		•	•	•				
Dinosaur	128	•	•			•	•	•	•	•	•		•	•	•	•						•	•	•			•	•	•	•		•	
Dore Lake	10																	•						•									
Dry Haven Creek	8	•									6	•	•			•							•										
Dry Island Buffalo Jump											50		•	•		•								•		•							
Dunvegan	67					•	•				15	•	•	•		•						•	•	•	•		•	•	•			•	
Dutch Creek	42	•									4	•	•	•		•							•										
Eagle River									•							•							•										
Eccles Pond											8		•	•		•								•									
Elk Creek	13	•									5		•	•		•							•										
Elk Creek Fish Pond		•									3		•			•																	
Elk River	14										2		•	•		•																	
Emerson Lakes	13										2		•	•		•							•	•									
English Bay	30															•	•	•		•				•	•			•					
Engstrom	4															•								•									
Engstrom Lake	12										3		•	•		•	•						•	•		•							
Fairfax Lake	39															•	•							•									
Fallen Timber	20	•														•								•									
Fallen Timber PRA	63	•									1		•	•		•							•										
Falls Creek Remote	3																						•										
Fawcett Lake	28	•							•		4		•	•		•	•	•					•	•									
Fickle Lake	41	•									7		•	•		•	•	•					•	•	•			•					
Figure Eight Lake	19										10		•	•		•	•	•		•	•		•	•	•			•					
Fish Creek											316	•	•	•	•	•		•	•	•	•	•	•	•	•		•	•	•	•		•	
Fish Lake	92	•									9	•	•	•		•	•						•	•	•								
Floating Stone Lake	66					•			•		12	•	•	•		•	•	•		•	•	•		•	•			•					
Fork Lake	43															•	•	•		•	•			•	•			•	•				
Franchere Bay	200	•	•			•		•	•		10	•	•	•	•	•	•	•		•	•	•	•	•			•	•					
Freeman Lake (Swan Hills)	6	•									4	•	•	•		•	•							•									

Park or Recreation Area Name	Number Of Campsites	Facility Operator	Firewood Concession	Reservations	Water Hook-ups	Sewage Disposal	Electrical Hook-ups	Flush Toilets	Showers	Group Camping Area	Picnic Tables	Picnic Shelter	Fire pits	Water	Flush Toilets	Fishing	Fish Cleaning Station	Swimming	Change House	Beach	Playground	Horse Shoe Pits	Trails	Boating	Boat Launch	Hand Boat Launch	Park Office	Wheelchair Access	Public Phone	Food Concession	Boat Rentals	Interpretive Programs		
Freeman River	10	•									6		•	•		•	•						•											
French Bay	10												•			•	•	•			•			•	•					•				
Garner Lake	66				•			•	\$		24		•	•		•	•	•	•	•	•		•	•	•	•	•	•	•			•		
Ghost Airstrip		•								•						•							•											
Ghost Reservoir	32	•		•	•	•					5			•		•		•			•			•	•				•	•				
Gleniffer Lake (Dickson Dam)	83			•						•	13	•				•	•	•		•	•	•	•	•	•				•	•				
Goldeye Lake	44	•									3		•	•		•	•						•	•										
Gooseberry Lake	82				•	•	•			•	60	•	•	•		•		•	•		•								•					
Green Tree	2															•		•						•										
Gregoire Lake	140	•	\$			•	•	•	\$	•	40		•	•		•	•	•	•	•	•	•	•	•	•		•	•	•	•	•			
Grovedale Fish Pond											14		•			•	•																	
Gunn	26	•	\$		•						26	•	•	•																•	•			
Hangingstone	57										4	•	•	•		•							•							•	•			
Hanmore	30															•	•	•		•	•			•	•				•					
Harlech	17	•									2	•	•	•		•																		
Hasse Lake											50	•	•	•		•	•	•		•	•		•	•		•			•			•		
Heart River Dams 1 and 2	7										3		•			•	•							•		•								
Hell's Gate	11	•																					•											
Hilliard's Bay	189				•	•	•	\$	•	•	22		•	•		•	•	•		•	•	•	•	•	•		•		•			•		
Holmes Crossing	8										7	•	•	•																				
Horburg	7	•														•								•										
Hornbeck Creek	33	•																																
Horseshoe Canyon											6																							
Hummingbird Staging Area																•							•											
Iosegun Lake	52	•									7	•	•	•		•	•	•							•	•								
Indian Graves	27	•	\$																															
Island Lake	41	•										•				•		•						•										
Jackfish Lake	8	•									•	•	•			•							•	•	•									
Jackknife Springs											•		•										•											
James River Bridge	8	•														•		•						•										

Park or Recreation Area Name	Number Of Campsites	Facility Operator	Firewood Concession	Reservations	Water Hook-ups	Sewage Disposal	Electrical Hook-ups	Flush Toilets	Showers	Group Camping Area	Picnic Tables	Picnic Shelter	Fire pits	Water	Flush Toilets	Fishing	Fish Cleaning Station	Swimming	Change House	Beach	Playground	Horse Shoe Pits	Trails	Boating	Boat Launch	Hand Boat Launch	Park Office	Wheelchair Access	Public Phone	Food Concession	Boat Rentals	Interpretive Programs	
James - Wilson	32	•									4	•	•	•		•							•										
Jarvis Bay	171	•		•		•		•	•							•		•			•		•	•			•	•	•			•	
Jensen Reservoir											4	•	•			•		•		•				•	•								
Kakwa Falls											7		•										•										
Kakwa River	14															•																	
Kehiwin	46															•	•	•						•	•								
Kinbrook Island	166	•	\$	•		•				•	35		•	•		•	•	•		•	•	•	•	•	•		•	•	•	•			
Kootenay Plains	20	•								•	4	•	•	•		•							•										
Krause Lake	40	•								•													•										
Lakeland PRA																																	
Ironwood Lake C.G.	20	•														•	•	•						•		•							
Pinehurst Lake C.G.	70	•														•	•	•						•	•		•						
Siebert Lake C.G.	43	•														•	•	•						•	•		•						
Touchwood Lake C.G.	100	•	\$						\$							•	•	•					•	•		•				•			
Lakeland P.P.																																	
Shaw Lake											10	•	•	•				•					•	•			•						
Lambert Creek	7	•									1	•	•	•		•																	
Leslieville	12	•										•																					
Lesser Slave Lake	113			•		•	•	•	\$	•	16	•	•	•		•	•	•		•	•	•	•	•			•	•	•			•	
Little Bow	193		\$	•		•		•	•	•	74	•	•	•	•	•	•	•		•	•	•	•	•	•		•	•	•	•			
Little Bow Reservoir	25										9		•	•		•		•		•				•	•								
Little Fish Lake	100		•									•								•	•												
Little Sundance	8										7		•	•		•																	
Livingstone Falls	22										•	•	•	•		•							•										
Long Lake	220	•	\$	•		•	•	•	\$	•	91	•	•	•	•	•	•	•	•	•	•	•	•	•	•		•	•	•	•	•		
Lovett River	17	•	•							•						•																	•
Lower Mann Lake											6	•		•		•	•	•						•	•			•					
Lundbreck Falls	53	•									3	•		•		•		•						•									
Lynx Creek	28	•									5		•	•		•							•										
Ma-Me-O Beach											25	•	•	•							•					•							

Park or Recreation Area Name	Number Of Campsites	Facility Operator	Firewood Concession	Reservations	Water Hook-ups	Sewage Disposal	Electrical Hook-ups	Flush Toilets	Showers	Group Camping Area	Picnic Tables	Picnic Shelter	Fire pits	Water	Flush Toilets	Fishing	Fish Cleaning Station	Swimming	Change House	Beach	Playground	Horse Shoe Pits	Trails	Boating	Boat Launch	Hand Boat Launch	Park Office	Wheelchair Access	Public Phone	Food Concession	Boat Rentals	Interpretive Programs			
Machesis Lake	19										5	•	•			•	•							•	•										
Maqua	13										5		•	•				•					•	•		•									
Mason Creek											5	•	•			•																			
Maycroft	12											•				•									•		•								
McGregor Reservoir	100										4	•		•		•						•			•	•									
McLeod River	22	•														•																			
McLeod River Group										•						•																			
Medicine Lake	38										6	•	•	•		•	•	•					•	•	•										
Michelle Reservoir																•									•										
Midland											50		•	•		•							•	•	•		•	•					•		
Ministik	30	•									34	•	•	•																					
Minnie Lake	8		\$									•		•		•		•							•	•									
Minnow Lake	8	•								•						•		•							•	•									
Miquelon Lake	275	•	\$	•		•	•	•	•	•	169	•	•	•	•	•		•	•	•	•	•	•	•	•	•	•	•	•	•	•	•	•		
Miseieutin	4															•		•							•										
Mitchell Lake	5															•									•	•									
Moonshine Lake	110					•	•		\$	•	71	•	•	•		•	•	•	•	•	•	•	•		•	•		•	•	•	•	•	•		
Moose Lake	59					•	•			•	20	•	•	•		•	•	•	•	•	•	•	•	•	•	•	•	•	•	•	•	•	•		
Mountain Park											11		•	•																					
Muriel Lake	22										2	•	•	•		•	•	•		•					•	•			•						
Musreau Lake	69										12		•	•		•	•	•					•	•	•										
Nojack	24	•														•		•																	
North Buck Lake	125	•	\$													•	•	•		•	•			•	•				•						
North Ghost	179	•														•									•										
North Ram River	19										9		•	•		•							•												
North Wabasca	35										8		•	•		•	•	•							•	•									
Nose Lake Remote	6															•								•											
Notikewin	19	•									20		•	•		•	•			•				•	•			•							
O'Brien											40		•	•		•		•			•			•	•				•						
Obed Lake	7	•									5		•			•	•							•	•										

Park or Recreation Area Name	Number Of Campsites	Facility Operator	Firewood Concession	Reservations	Water Hook-ups	Sewage Disposal	Electrical Hook-ups	Flush Toilets	Showers	Group Camping Area	Picnic Tables	Picnic Shelter	Fire pits	Water	Flush Toilets	Fishing	Fish Cleaning Station	Swimming	Change House	Beach	Playground	Horse Shoe Pits	Trails	Boating	Boat Launch	Hand Boat Launch	Park Office	Wheelchair Access	Public Phone	Food Concession	Boat Rentals	Interpretive Programs
Oldman River	40	•	\$			•					40	•	•	•		•								•								
Oldman River Dam	285	•			•	•	•	•	•	•	110	•	•	•		•	•	•	•	•	•	•		•	•	•	•	•	•	•		•
Oldman River North	10	•								•	4		•	•		•							•									
Ole's Lake	16										14		•			•	•	•						•								
Paddle River Dam											15		•			•	•	•						•	•							
Park Lake	40		•			•	•			•	60	•	•	•		•	•	•	•	•	•	•	•	•	•		•	•	•	•	•	
Payne Lake	30	•	\$								2		•	•		•								•	•							
Pearson Lake	3															•		•						•								
Pembina Forks	20										6	•	•	•		•																
Pembina River	132	•		•		•	•	•	\$	•	35	•	•	•		•	•	•		•	•	•	•	•	•		•	•	•		•	
Peppers Lake	16															•	•							•	•	•						
Pierre Grey's Lake	83										5	•	•	•		•	•						•	•	•	•						
Pigeon Lake	316	•	•	•	•	•	•	•	•	•	72		•	•	•	•	•	•	•	•	•	•	•	•	•	•	•	•	•	•	•	•
Pines											5	•	•			•																
Pinto Lake Remote	3																															
Phyllis Lake	8	•														•		•						•		•						
Police Outpost	46	•	•			•					10			•		•	•				•		•	•	•		•		•			
Prairie Creek	50	•								•	5	•	•	•		•							•									
Queen Elizabeth	55					•	•			•	33	•	•	•				•		•	•	•	•	•	•		•	•	•		•	
Racehorse Creek	37	•									2	•	•	•		•							•									
Rainbow Lake	16										3		•			•	•	•						•								
Rainbow Lake Trout Pond											9		•			•																
Ram Falls	54	•									20	•	•	•		•							•									
Raven	16	•	•													•		•						•								
Red Lodge	117	•	•	•		•		•	\$		36	•	•			•		•		•	•	•					•	•	•			
Red Deer River	64	•									4	•				•							•	•								
Richardson's River	2																															
Rochon Sands	69		\$			•				•	25	•	•	•		•	•	•	•	•	•	•		•	•		•	•	•			
Rock Lake	93		•								7	•	•	•		•	•						•	•	•	•						
Running Lake	17										9		•	•		•	•	•						•								

Park or Recreation Area Name	Number Of Campsites	Facility Operator	Firewood Concession	Reservations	Water Hook-ups	Sewage Disposal	Electrical Hook-ups	Flush Toilets	Showers	Group Camping Area	Picnic Tables	Picnic Shelter	Fire pits	Water	Flush Toilets	Fishing	Fish Cleaning Station	Swimming	Change House	Beach	Playground	Horse Shoe Pits	Trails	Boating	Boat Launch	Hand Boat Launch	Park Office	Wheelchair Access	Public Phone	Food Concession	Boat Rentals	Interpretive Programs		
Sandhills										•													•											
Saskatoon Island	96	•		•		•	•	•	•	•	64	•	•	•		•		•	•	•	•	•	•	•	•		•	•	•	•	•	•		
Saunders	5	•									2		•			•									•	•							•	
Seven Mile	36	•																																
Sheep Creek	9																																	
Shunda Viewpoint	6	•																																
Shuttler Flats										•						•									•									
Siffleur Falls		•														•								•										
Simonette River	9															•																		
Sir Winston Churchill	72	•			•			•	•	•	34	•	•	•		•	•	•	•	•	•	•	•	•	•	•	•	•	•			•		
Smoke Lake	47										5		•	•		•	•	•							•	•								
Smoky River	12															•									•									
Smoky River South(Blue Bridge)	22	•														•								•	•									
Snow Creek		•								•														•										
South Fork	22										7																							
South Ghost		•									•																							
Southview	7																																	
St. Mary's Reservoir	130									•		•	•			•		•		•	•				•	•								
Strachan	27	•									8	•	•	•		•																		
Strathcona											47	•			8									•					•	•	•		•	
Struble Lake																																		
Sulphur Lake	11									•	15		•	•		•	•	•						•	•	•								
Swan Lake (R.M.H)	16	•									10	•	•	•		•	•							•	•									
Sylvan Lake											50	•		•	•	•		•	•	•	•				•			•	•					
Syncline A & B		•								•																								
Taber	65									•	35	•	•	•		•						•	•	•	•		•	•	•					
Tanasiuk	51										7		•	•		•	•								•	•								
Tay River	34	•														•		•						•										
The Narrows	61		•													•	•							•				•						
Thompson Creek	55	•									6	•	•	•		•								•										

Park or Recreation Area Name	Number Of Campsites	Facility Operator	Firewood Concession	Reservations	Water Hook-ups	Sewage Disposal	Electrical Hook-ups	Flush Toilets	Showers	Group Camping Area	Picnic Tables	Picnic Shelter	Fire pits	Water	Flush Toilets	Fishing	Fish Cleaning Station	Swimming	Change House	Beach	Playground	Horse Shoe Pits	Trails	Boating	Boat Launch	Hand Boat Launch	Park Office	Wheelchair Access	Public Phone	Food Concession	Boat Rentals	Interpretive Programs				
Thunder Lake	127	•	•	•		•	•	•	•	•	73	•	•	•		•	•	•	•	•	•	•	•	•	•	•	•	•	•	•	•	•				
Tillebrook	120					•	•	•	•												•	•	•				•	•	•			•				
Tolman Bridge	69		•									•				•		•			•			•		•										
Trapper Lea's	18	•																														•				
Travers Dam											10	•	•	•		•								•	•											
Travers Spillway																•																				
Twelve Foot Davis											1																									
Twin Lakes	49	•										•				•	•	•		•				•	•											
Two Creeks	10	•														•																				
Two Lakes																																				
Gunderson Meadows	32															•	•							•	•											
Moberly Flats	30															•	•							•	•											
Pine Hollow	24															•	•							•	•											
Upper Shunda Creek	21	•									4		•	•		•							•													
Vermillion	98	•	\$	•		•	•	•	•	•	60	•	•	•	•	•		•	•	•	•	•	•	•			•	•	•							
Wabamun Lake	287		\$	•		•	•	•	\$	•	103	•	•	•	•	•		•		•	•	•	•	•	•	•	•	•		•	•					
Waiparous Creek	57	•														•							•													
Waiparous Valley											3																									
Waskahigan River	24															•								•												
Waterton Reservoir	25	•									11	•	•	•		•		•		•	•			•	•									•		
Watson Creek	38	•														•																				
Weald Group Use Area		•								•						•																				
Whitehorse Creek	26															•								•												
Whitemud Falls	4															•								•	•											
Whitney Lakes	211					•	•	•	\$	•	41	•	•	•		•	•	•		•	•	•	•	•	•	•	•	•		•	•	•			•	
Wild Horse	4																						•													
Wildhay River Group Use										•						•																				
Wildhorse (Kinky Lake)	23	•									6		•	•		•	•						•	•	•											
William A. Switzer	220					•	•	•	\$	•	45		•	•		•	•	•		•	•	•	•	•	•	•	•	•		•	•	•			•	
Williamson	60	•		•		•	•				22	•	•	•		•	•	•	•	•	•	•	•	•	•	•	•	•	•	•	•	•				

Park or Recreation Area Name	Number Of Campsites																															
		Facility Operator	Firewood Concession	Reservations	Water Hook-ups	Sewage Disposal	Electrical Hook-ups	Flush Toilets	Showers	Group Camping Area	Picnic Tables	Picnic Shelter	Fire pits	Water	Flush Toilets	Fishing	Fish Cleaning Station	Swimming	Change House	Beach	Playground	Horse Shoe Pits	Trails	Boating	Boat Launch	Hand Boat Launch	Park Office	Wheelchair Access	Public Phone	Food Concession	Boat Rentals	Interpretive Programs
Willow Creek	40	•								10	•	•																				
Winagami Lake	62				•				•	50	•	•	•		•	•		•	•	•	•	•	•	•	•		•	•	•			
Wolf Lake	63														•	•							•	•								
Wolf Lake (NES)	32								•			•			•	•	•						•	•	•							
Woolford	30								•	6		•			•						•		•	•								
Writing-On-Stone	75				•		•	•	•	15	•	•	•		•		•		•	•	•		•	•		•	•	•			•	
Wyndham-Carseland	196	•			•					15		•	•		•						•	•	•	•		•	•	•				
Young's Point	92	•		•	•	•	•	•	•	26		•	•	•	•	•	•			•	•	•	•	•	•	•	•	•				