

DINOSAUR Provincial Park

UNESCO WORLD HERITAGE SITE



MAP & INFORMATION

www.DinosaurPark.ca

information 403-378-4342
programs 403-378-4344
camping 1-877-53PARKS

Located 48 km northeast of Brooks, Alberta, Dinosaur Provincial Park is world renowned for its abundant fossils, riverside cottonwood groves, and stunning badlands.

**Government
of Alberta**

Park Visitor Centre & Royal Tyrrell Museum Field Station

Open year-round. Check website for hours of operation. Admission fees may apply.

- Information
- Exhibits
- Gift Shop
- Programs
- Administration



Programs & Tours

Available seasonally. Reserve tickets at Visitor Centre or online at www.DinosaurPark.ca. Fees may apply.

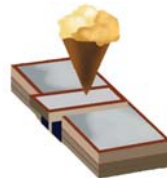
- Bus Tours
- Guided Hikes
- Family Programs
- Back-country Excursions
- Dinosaur Digs



Concession & Convenience Store

Open seasonally. Check website for hours of operation.

- Restaurant
- Groceries & Camping Supplies
- Bathrooms & Showers
- Laundromat
- Pay Phone



Camping

Available year-round. Lower winter rates with self-registration on site. Reserve sites at www.Reserve.AlbertaParks.ca or call 1-877-537-2757.

- Standard & Power Sites available
- Firewood available onsite
- Group Camp available, call 403-378-3700



Dinosaur Bones

Dinosaur Provincial Park has the best representation of late Cretaceous fossils in the world. Help us keep it that way by respecting and protecting this important resource. It is illegal to remove fossils!

Self-Guided Adventures

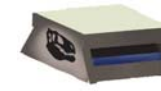
Public Loop Road

This 3.2 km gravel loop road begins at the campground bridge.



Fossil Houses

Accessible from the public loop road, these structures exhibit dinosaur bones in the ground.



Boat Launch

A public boat launch is located near the day use area.



Interpretive Trails

Prairie Trail

Loop length: 300 metres
Walking time: 15 minutes

At the park entrance viewpoint explore grasslands that form the outer edge of the park's land base. Wheelchair accessible.



Coulee Viewpoint Trail

Loop length: 0.9 km
Walking time: 45 minutes
Starting by the Visitor Centre, the path climbs to ridge tops with beautiful views.



Badlands Trail

Loop length: 1.3 km
Walking time: 45 minutes
Adjacent to the public loop road, this trail leads you through a badlands landscape.



Trail of the Fossil Hunters

Linear length: 0.9 km
Walking time: 40 minutes
Begins at Fossil Display #2 on the public loop road and ends at a historic quarry site.



Cottonwood Flats Trail

Loop length: 1.4 km
Walking time: 1 hour
Explore lush riverside habitat with towering cottonwood trees and abundant wildlife. Wheelchair-accessible.



Staying Safe in the Park

- The badlands can be very hot! Hike with plenty of water, a hat and sunscreen.
- The badlands can be extremely slippery. Be sure to wear sturdy footwear.
- Cacti have sharp spines. Be careful where you step or sit.
- Natural caves and sinkholes form in the badlands. Watch closely for these when hiking and avoid standing or walking directly over them. Close supervision of children is required.
- Prairie rattlesnakes are venomous, but their bite is rarely fatal. Leave them alone and they will leave you alone! Stay on trails, avoid rock piles, ledges and long grass, and walk in groups.
- Scorpions and black widow spiders also have venom. Since they rest underground during the day, you likely won't encounter them. For your safety, don't put your hands or feet in cracks, holes or crevices.

Pets in the Park

Pets must be on a leash not more than two metres long, always under control, and kept a safe distance from wildlife.

Natural Preserve

A large portion of the park is a natural preserve accessible only through guided programs. To protect wildlife, landscape, fossils and yourself please respect these boundaries.

General provincial parks information:
1-866-427-3582
www.AlbertaParks.ca

ISBN: 978-0-7785-7859-8
Printed February 2010

ALBERTA PARKS





DINOSAUR

PROVINCIAL PARK

