

Brazeau Canyon Wildland Park

Brazeau Canyon Wildland Park is 50.4 square km (5,039 ha) in size. It was established on December 20, 2000. The park protects the Brazeau River valley and adjacent uplands, and includes the former Muskiki Lake Natural Area and the western part of Marshybank Ecological Reserve.

Wildland parks are large undeveloped areas that cater to nature-based tourism and adventure travel.

Site Description and Location

Brazeau Canyon Wildland Park is located west of the Forestry Trunk Road about 40 km north of Nordegg. Access to the park is via the Cardinal River Road (Grave Flats Road), which runs through the northern part of the park.

The park consists of two sections. The main section preserves a 25 km portion of the valley of the Brazeau River where it leaves Jasper National Park. The second section encompasses a 260-hectare area around Muskiki Lake, located several kilometres north of the main section.

There are a number of folded bedrock ridges along the Brazeau River. Steep walled canyons (approximately 60 metres deep and often less than 200 metres from rim to rim) have evolved due to the river downcutting through these ridges.

Significant Features

A variety of significant and interesting features are found within Brazeau Canyon Wildland Park. Glacial meltwater channels occur along the southeastern edge of the park. These channels probably formed along the margin of a valley glacier as it retreated at the end of the last glacial period. These narrow twisting channels are important wildlife travel corridors.

See page sites and springs, which occur in a number of places, are sources of sodium, calcium, potassium, magnesium and other trace elements. These springs are used as mineral licks by elk, deer and moose. They also provide excellent mineral conditions for a variety of plants.

Three rare plants have been identified in Brazeau Canyon Wildland Park. Dwarf bulrush *Trichophorum pumilum* has been found at Muskiki Lake and in wetlands south of the Brazeau River. A rare moss, *Dicranum spadiceum* grows at Muskiki Lake, and Greenland primrose *Primula egalikensis* grows in the wetlands south of the Brazeau River.

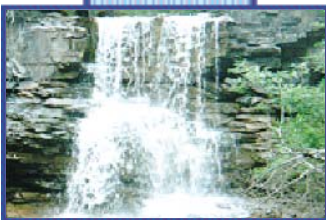
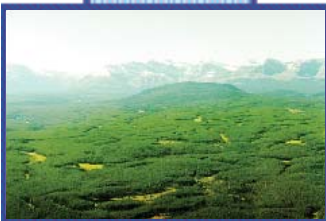
Recreational Activities

Brazeau Canyon Wildland Park provides a spectacular setting for outdoor enthusiasts. Although there are no developed trails, old roads and seismic lines are used for hiking and horseback riding.

Explorers will discover a variety of forest, shrub and meadow communities, along with their associated wildflowers, birds and mammals. There are no developed camping or picnic facilities in Brazeau Canyon Wildland Park. Hunting is permitted in the park.

For more information:

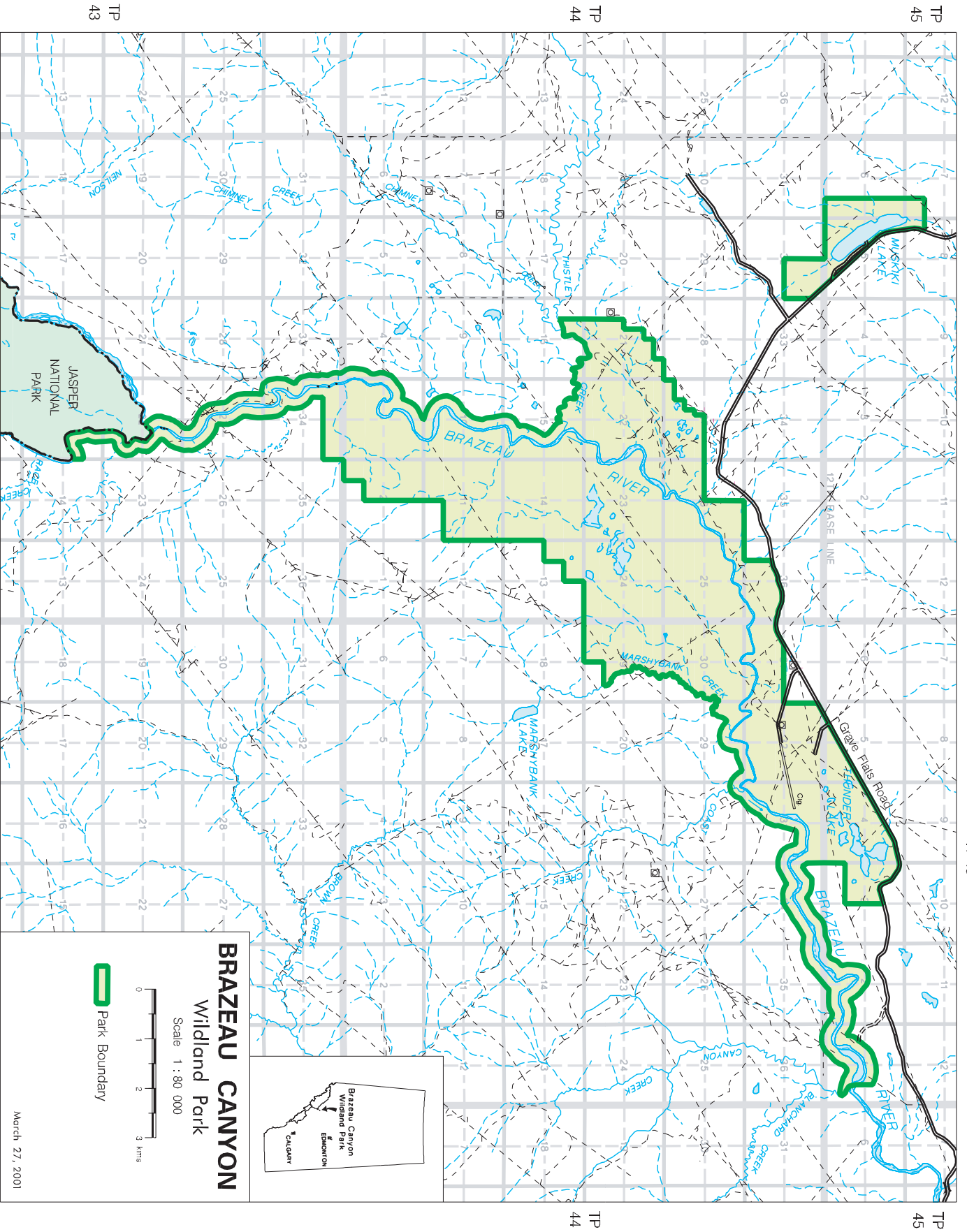
780-865-8264 in Hinton or
780-723-8244 in Edson. To call
toll-free from anywhere in Alberta,
dial 310-0000 and enter the
number.



April 1, 2001

ISBN No. 0-7785-1699-7

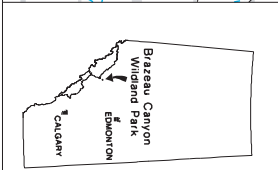
Pub No. I/879



R 20
R 19 West of the Fifth Meridian

TP 45
TP 44
TP 43

R 20
R 19



BRAZEAU CANYON
Wildland Park

Scale 1 : 80 000



Park Boundary

March 27, 2001