

FISH CREEK PROVINCIAL PARK

HIDDEN MYSTERIES

RECOMMENDED AGES: 6 – 10 years old

SUGGESTED EQUIPMENT TO BRING:

- Pooters (see directions attached)
- Insect boxes and/or insect keepers
- Lassos (string circle)
- Water Invertebrate bag (with buckets, spoons, ID booklets, magnifying glasses, egg cartons)

TIME REQUIRED: approximately 1-½ hours

ACTIVITY SUMMARY:

Using pooters and insect boxes, participant will explore the grassland and forest looking for insects of all shapes and sizes.



After exploring land insects, you will take the participants to a small marsh and discover the world of water invertebrates using buckets and dip nets.

ACTIVITY DETAILS:

Following the map attached, we recommend walking towards the marsh and stopping one to two places on route to do Activity #A – Invertebrate Crawl. End with Activity #B – Water Animals, at the marsh. After the marsh, head directly to Hull’s Wood for lunch or return to the Visitor Centre.

A. Invertebrate Crawl (Land/Air Insects)

The Invertebrate crawl is intended to help children appreciate the tremendous amount of life that exists in the miniature worlds of insects. It emphasises observation skills and patience. It is **not** important to identify the insects (six legs) and spiders (eight legs) found. Throughout the activities, please stress that insects are wildlife and as such, should not be disturbed or harmed in any way. This is why we use pooters, not fingers, for picking up insects.

Area #1) Start Near Visitor Centre

Introduce how to use a pooter and insect box. Have the participants take a look for insects around the grass, trees and shrubs in the Visitor Centre area. Practise using the pooters. Have a sharing circle to let the participants ask questions and share their discoveries. Have each participant bring an insect in their insect box to share with the group. **Stress that all insects must be put back.**

Area #2 Grassland (in small groups)

Lasso some of the grassland! Throw down the lasso rope and have the participants sit or lie down around the outside and look in. Use the pooters and insect boxes to take a closer look at any insects and spiders found. Be patient, tell them to look for a couple of minutes.

FISH CREEK PROVINCIAL PARK

HIDDEN MYSTERIES CONTINUED

Area #3 Forest

Look ‘up, down and all around’ in the forest for signs of insects. Refer to “Some places where insects may be found” (attached). Use pooters and insect boxes. Look for anthills along the trail – they are a good source of ‘guaranteed’ insects! Please do not disturb the anthills or any insects found.

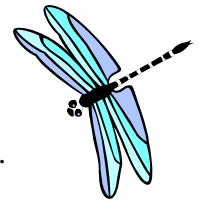


B. Water Invertebrates (at Marsh) – Area #4

- a) Once at the marsh, divide the participants into small groups and divide the props among the groups. Spread out the groups to different areas of the marsh.
- b) Have one participant go to the water’s edge and dip up a bucket of marsh water. He/she does not need to get wet feet or walk into the water. We **discourage** people wearing rubber boots and walking around in the marsh as this disturbs animals and their homes.
- c) Bring the water back to the small group; let it settle out and look in the buckets for signs of life. They will be tiny and the more you look the more you will see!
- d) Use the spoons to pick up a particular invertebrate and put it in one of the compartments in the egg carton for a closer look. Magnifying glasses and identification charts are also provided.
- e) Take the water back to the marsh and gently dump it back in. This is very important for teaching the participants not to disturb wildlife, regardless of how small.

PRE-VISIT ACTIVITY:

Make pooters from 2 straws, a piece of tape and a piece of nylon (see directions attached).



POST-VISIT ACTIVITY:

Insect Mural – unroll a huge sheet of paper and let the participants loose with your art supplies. Make pictures and/or 3-D models of insects. Use egg cartons, pipe cleaners, paper cups, paint, markers, etc. Encourage them to make ‘proper’ insects, i.e.: 3 body parts and 6 legs. Most also have antennae and wings (either 2 or 4) at some stage in their life cycle.

HOW TO'S

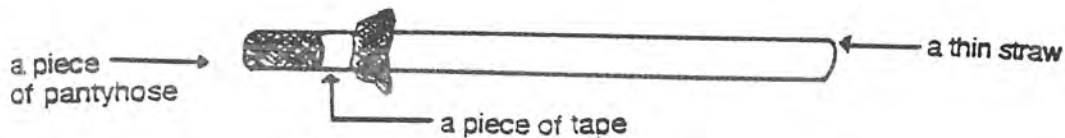
A New Improved, Super Deluxe Pooter

You will need:

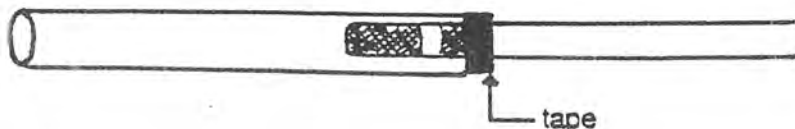
1. 2 straws (one straw should be a thin straw; the other should be fatter)
2. some tape
3. a piece of pantyhose (4 cm x 4 cm)

What to do:

1. Cut the straws in half.
2. Put the piece of pantyhose over the end of the thin straw.
3. Wrap a piece of tape around the pantyhose and the straw to hold it all together. It should look like this:



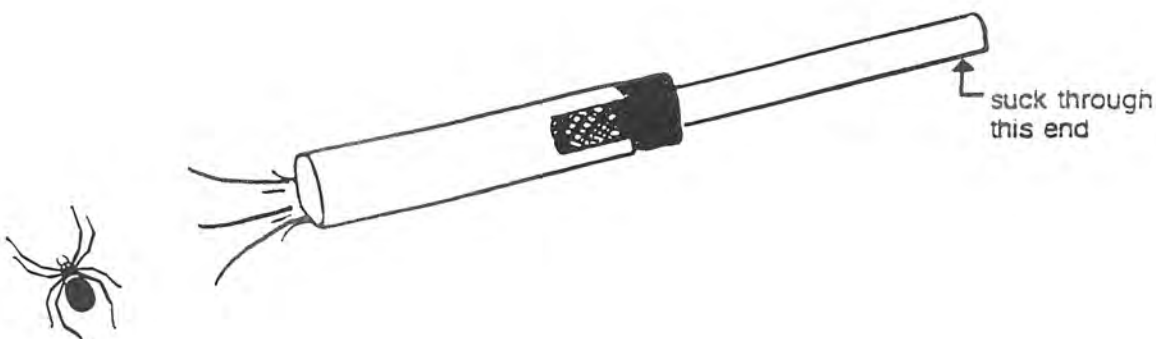
4. Stick the thin straw inside the fat straw. It will look like this:



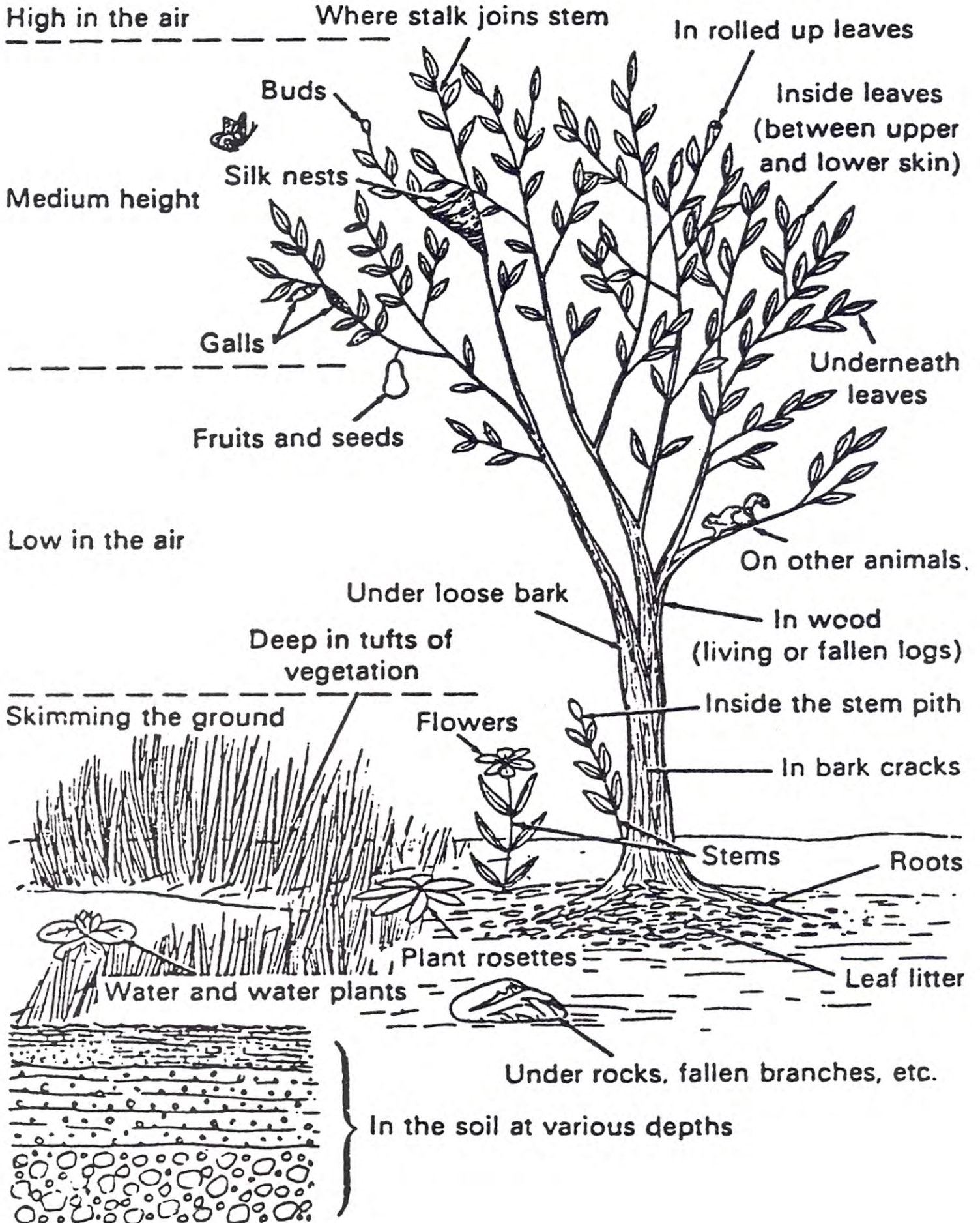
5. Hold the two straws together with another piece of tape.

How to use your pooter:

1. Put the thin straw to your mouth and suck in the small insect or spider through the end of the fat straw.
2. Place your index finger over the end of the fat straw.
3. Take you finger off and **gently** (no hurricanes) blow out the insect or spider into a box magnifier or someplace you can have a close-up look before setting it free.



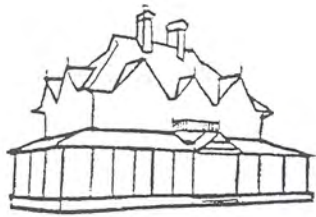
SOME PLACES WHERE INSECTS MAY BE FOUND



HIDDEN MYSTERIES

GENERAL LOCATIONS OF STOPS

* YOU ARE HERE
VISITOR CENTRE



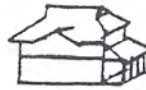
TO
RANCH
HOUSE

Introduction
to Bugs/Pooters

1



STEEP
HILL



P

2

Grasslands



2

Grasslands



FISH CREEK



3
Forest



Forest

3

Marsh

4



Path To
Sikome
Lake



 Paved Path