

# Visitation Statistics

## Provincial Parks & Recreation Areas

### 2002/03 Fiscal Year

---



prepared by  
**Alberta Community Development**  
**Parks and Protected Areas Division**  
**Policy and Program Coordination Branch**



# Visitation Statistics

Provincial Parks & Recreation Areas

2002/03 Fiscal Year

prepared by  
**Alberta Community Development  
Parks and Protected Areas Division  
Policy and Program Coordination Branch**



## **Foreword**

The 'Visitation Statistics, 2002/03 Fiscal Year' report, covering the period April 1, 2002 to March 31, 2003, is published annually to supply selected information on provincial parks and recreation areas. This publication provides data on the following aspects of park visitation:

### **Camping Use Statistics**

Based on camping permit sales analysis, and / or reasonable estimates of camping use and camper surveys.

### **Day Use Statistics**

Collected through Automatic Traffic Counter readings and traffic surveys.

### **Group Camping Use Statistics**

Based on group use permit sales analysis.

### **Fixed Roof Accommodation Use Statistics**

Kananaskis Country - number of guests reported.

Visitation statistics are reported both at the park and 'area' level (i.e., individual campgrounds, day use areas, group use areas, fixed roof accommodation facilities). Statistics are summarized for provincial parks and recreation areas. The data collection systems associated with these visitation statistics are discussed in detail in the Introduction Section.

Ten years of historical statistics for camping, group camping, fixed roof accommodation, and day use are included in this report.

In addition to visitation, this report provides information covering facilities and services for selected sites. To put the province in perspective, maps (see Appendix) are also included. Maps 1 and 2 are for Southern and Northern Alberta respectively. They show the location of sites reporting visitation statistics. Additional information on the provincial parks and provincial recreation areas can be obtained from the following 'Web Site' :

([http://www.cd.gov.ab.ca/enjoying\\_alberta/parks/](http://www.cd.gov.ab.ca/enjoying_alberta/parks/))

Inquiries regarding the statistics reported in this document or a further explanation of the methodology are welcomed, and should be directed to the Section Head, Research Assessment Section at (780) 427-7009.

Copies of this publication are distributed to other Alberta government agencies, all provincial park agencies in Canada, Parks Canada, and selected libraries (e.g., the Alberta Legislature, Alberta Provincial Archives and the National Library of Canada). In addition, copies of this report are also available in electronic format. Inquiries should be directed to:

Alberta Community Development  
Parks and Protected Areas Division  
Section Head, Research Assessment Section  
2nd Floor, Oxbridge Place  
9820 - 106 Street  
Edmonton, Alberta  
T5K 2J6

Telephone: (780) 427-7009  
Fax: (780) 427-5980

The Parks and Protected Areas Division greatly appreciates and acknowledges the conscientious efforts of all those who collect and record the data.

## Table of Contents

	Page		Page
<b>Foreword</b>	iii	<b>Appendix</b>	63
<b>Introduction</b>	1	Map 1: Southern Alberta	65
Camping Statistics Methodology	2	Map 2: Northern Alberta	67
Day Use Statistics Methodology	3	Summer Facilities Chart	69
Group Camping Statistics Methodology	3	<b>List of Figures</b>	
Fixed Roof Accommodation Statistics Methodology	3	Figure 1a Ten Most Visited Provincial Parks for Camping or	
Historical Comparison	3	2002	11
Visitation Highlights For 2002/03	5	Figure 1b Ten Most Visited Provincial Recreation Areas for	
<b>Glossary of Terms</b>	7	Camping for 2002	12
<b>Provincial Summary</b>		Figure 2: Ten Most Visited Provincial Parks for Day Use for	
Visitation Statistics	9	2002	13
<b>Visitation Summary</b>		Figure 3: Ten Most Visited Provincial Recreation	
Reading Visitation Summary Tables	18	Areas for Day Use for 2002	14
Provincial Parks	19	Figure 4: Percent of Visitors by Type	15
Provincial Recreation Areas	27	Figure 5: Provincial Historic Visitation Summary	17
<b>Historical Comparison</b>			
Provincial Parks			
Camping	35		
Group Use	48		
Day Use (excluding Kananaskis Country)	55		
Day Use (Kananaskis Country)	62		
Provincial Recreation Areas			
Camping	41		
Group Use	53		
Day Use	60		





## Introduction

This report presents Visitation Statistics for the period of April 1, 2002 to March 31, 2003. It is **IMPORTANT TO NOTE** however, that overnight statistics (i.e., camping, group camping and fixed roof accommodation) and automatic traffic counter readings (required to derive estimates of day use) are only collected for the months of April to October. Where applicable (see note below), adjustments are made to the April - October visitation statistics to represent a fiscal year total. This is part of an on-going process to simplify data requirements and minimize requirements for off-season collection.

**NOTE:** 'Inflation factors' to adjust the April - October period to a fiscal year total, are based on a previous analysis of historical visitation data which had been completed for the fiscal year 2000/01. For purposes of this report, the following information is provided:

- o Camping and group camping for the April to October period represents on average, 99% and 95% respectively of the annual total provincial overnight visitation. Therefore reported camping and group camping are assumed to represent the total fiscal year.
- o Day use (excluding Kananaskis Country) for the April to October period represents on average, 80% of the annual total provincial day use visitation (variations ranged from 60% to 100% between sites). Therefore reported provincial and historical day use for 2002/03 is adjusted to represent a total fiscal year based on a provincial and site-specific inflation factor(s).

- o Kananaskis Country day use for the April to October period represents on average, 60% of the annual total Kananaskis Country day use visitation. Therefore reported Kananaskis Country day use and historical day use for 2002/03 is adjusted to represent a total fiscal year based on a Kananaskis Country and site-specific inflation factor(s).
- o Fixed roof accommodation includes overnight stays at William Watson Lodge. Visitation at William Watson Lodge (Kananaskis Country) for the April to October period represents on average, 60% of the annual total visitation to the lodge. Therefore reported visitation for William Watson Lodge for 2002/03 is adjusted to represent a total fiscal year based on a site-specific inflation factor.

Information is presented for selected provincial parks and recreation areas, at both the park level and 'area' level (e.g., individual campground statistics for those parks with multiple campgrounds).

Visitation statistics are compiled for 62 of 68 provincial parks and 114 of 250 provincial recreation areas. Recreation areas that have negligible visitation are not included in the statistics collection program. Collection is not practical or cost-effective in these situations. Visitation data is not collected for the province's 3 wilderness areas, 149 natural areas, 16 ecological reserves, Willmore Wilderness Park and 28 of the 32 provincial wildland parks because these areas are generally not accessible by vehicle and have minimal use.

Tables summarising statistics for camping use, day use, and group use, are included in this report. Fixed roof accommodation use is included in the provincial visitation statistics table. Charts are also included to facilitate further comparison of selected visitation. It is important to note that individual campground statistics do not include overflow camping. This statistic is reported at the park level only. Also, for those parks that have more than one day use area, the Park level day use statistic total discounts for any multiple visitation (i.e., a day use party who visits more than one day use area in the same park).

Visitation data can be further analysed to meet specific information requirements. These queries should be directed to the Section Head, Research Assessment Section. Brief descriptions of the data collection methodologies used for each category of use statistics follow.

### **Camping Statistics Methodology**

Camping statistics are based primarily upon information obtained from camping permits. These permits are issued via two systems:

- o The Standard Camping Permit system; and
- o the Self-Registration Permit (envelope) system.

*Standard Camping Permits* and associated periodic surveys provide information on occupied campsite nights and average camping party size. This information enables calculation of the number of campers (see Glossary).

Occupied campsite nights are based on the premise that a site is considered occupied when a permit has been issued and that site is occupied by at least one camping accommodation unit.

*Self-Registration Permits* also provide statistics on occupied campsite nights, and requires periodic surveys to provide data on camping party size.

Backcountry camping statistics are only reported for designated backcountry campgrounds in Kananaskis Country. These statistics are derived through a backcountry reservation service, which includes the issuing of backcountry camping permits. A periodic analysis of the backcountry camping permits provides data on camping party size.

## **Day Use Statistics Methodology**

For the provincial parks and Kananaskis Country, peak season day use statistics are based on figures collected from automatic traffic counters. Adjustments to these counts include determining the ratio of day use vehicles to all other vehicles entering or exiting the park and average party size. It is important to note that the ratio of day use vehicles to all other vehicles also discounts for multiple visitations to day use facilities or multiple stops along recreation corridors. Both the ratio of day use to all other vehicles and average party size adjustment factors are obtained through a periodic day use calibration survey.

The survey involves stopping traffic on 20 randomly selected days during the peak season (April - September) to conduct brief interviews. Daily vehicle counts and the survey information are analysed to *yield estimates of day use visitation*.

When traffic counter readings are not available, the total vehicle counts are supplemented by estimates. This, plus the fact that adjustment factors obtained from past day use calibration surveys are becoming increasingly dated, serves to illustrate the need to *interpret the day use data with caution*.

The day use methodology for provincial recreation areas adjusts traffic counts for camper traffic (determined from camping permit sales) and estimates of non-recreational vehicles to yield survey information and the estimates of day use visitation. This approach to day use estimation is referred to as

the 'Residual Method'. This approach is also used for estimating off-season day use at the majority of provincial parks, which have not completed an off-season traffic survey. Due to the change in the collection methodologies at provincial recreation areas, no historical day use comparison is provided prior to the implementation of the residual method.

## **Group Camping Statistics Methodology**

Currently the group use permit system collects information pertaining to group camping unit nights, group campers, and occupancy. A survey component of the group use permit provides the average number of people in a group unit, which is required to calculate the number of group campers.

## **Fixed Roof Accommodation Use Statistics Methodology**

'Occupied room nights' and 'number of guests' are based on actual figures reported for William Watson Lodge. The lodge provides barrier-free accommodation for persons with disabilities and their guests.

## **Historical Comparison**

Tables summarising statistics for camping use, day use, group use, and fixed roof accommodation use, over a ten-year period, are included in this report.



## **Visitation Highlights for 2002/03**

### **Total Visitation**

Over 8.2 million people visited provincial parks and recreation areas during the 2002/03 fiscal year. This represents a slight decrease of 3.8 percent from 2001/02 fiscal year.

### **Camping**

The total number of campsites in provincial parks and recreation areas in the 2002/03 fiscal year was 13,248. This represents a slight increase over the previous year.

The total number of camping parties decreased 3.1 percent from the 2001/02 fiscal year. In addition, it is important to note that for a number of parks and recreation areas, camping data was either incomplete or not available. These provincial parks and recreation areas are identified with footnotes in the statistics tables.

### **Group Camping**

Group camping increased by 37.8 percent from the 2001/02 fiscal year. As with camping, group camping data for a number of group use areas was either incomplete or not available. These group use areas are identified with footnotes in the statistics tables.

### **Day Use**

Estimated 6.6 million-day use visitors used provincial parks and recreation areas during the 2002/03 fiscal year. This

represents a slight decrease of 1.1 percent from the 2001/02 fiscal year.

It should be noted that for a number of provincial parks and recreation areas throughout the province, day use data was either incomplete or not available. These provincial parks and recreation areas are identified with footnotes in the statistics tables.

## Historical Comparison

Between 1993/94 and 2002/03 there was a very modest decrease in the total provincial visitation, averaging 1%<sup>1</sup>. A comparison of these years indicates that there are more years where there was a negative (6 years) percent change in visitor numbers than positive (3 years). However, in reviewing this trend it is important to consider the impact of incomplete or missing data as previously noted. The 10-year mean for provincial visitation was 8.7 million annual visitors with a high of 9.0 million annual visitors occurring in 1993/94.

## Final Synopsis

In comparing the fiscal year 2002/03 to 2001/02, the province only experienced an increase in the number of group campers. Overall, total visitation to provincial parks and recreation areas decreased slightly. It is important to note that for several areas, data was either not available or incomplete. For the most part, this affected the reported camping and day use visitation. Clearly this has an impact on the reported visitation but the extent cannot be ascertained at this point in time. The information contained in this report is the best available at the time of preparation.

The G8 Summit of 2002 was held from June 25 to June 28 in Kananaskis Country. In preparation for the G8 Summit a number of park facilities were affected by security closures from June 17 to June 28. Considering that more than 85 percent of all vehicle accessible camping facilities and 50 percent of group camps were not affected by security

requirements, the overall impact of security closures on Kananaskis Country visitation was minimal.

---

<sup>1</sup> Based on averaging the annual percent changes between fiscal years.

## Glossary

### Camping Use Definitions

**Average Camping Party Size** - Average number of people per occupied campsite. This is determined for each campground by a periodic survey of camping permits.

**Campers** - Average camping party size multiplied by the number of occupied campsite nights.

**Camping Accommodation Unit** - A tent, a tent trailer, a truck camper, a van, a travel trailer, a fifth wheel trailer, or a motor home.

**Occupied Campsite Night** - One campsite occupied for one night.

**Overflow Unit Night** - One camping accommodation unit in an area designated as an overflow camping area for one night.

### Group Use Definitions

**Average Group Camping Party Size** - Average number of people per group. This is determined for each group use area by a periodic survey of camping permits.

**Group Unit Night** - One camping accommodation unit in an area designated as a group use area for one night.

**Group Campers** - Average group camping party size multiplied by the number of group unit nights.

### Day Use Definitions

**Average Day Use Party Size** - Average number of people associated with a day use party entering a provincial park or recreation area for one day or portion of one day without staying overnight. This is determined by a periodic survey of day users.

**Day Use Party Visit** - Person(s) in a vehicle entering a provincial park or recreation area for one day or portion of one day without staying overnight.

**Note:** In the case of 'walk-in' day users, a party is considered to be one or more individuals who appear to enter the park together.

**Day Use Visitors** - Person(s) making a recreational visit to a provincial park or recreation area for one day or portion of one day without staying overnight.

### Fixed Roof Accommodation Use Definitions

**Occupied Room Night** - One room occupied for one night.

**Guests** - Actual number of people per occupied room.





**Provincial Visitation Statistics**  
**(Fiscal Year: April 1 to March 31)**

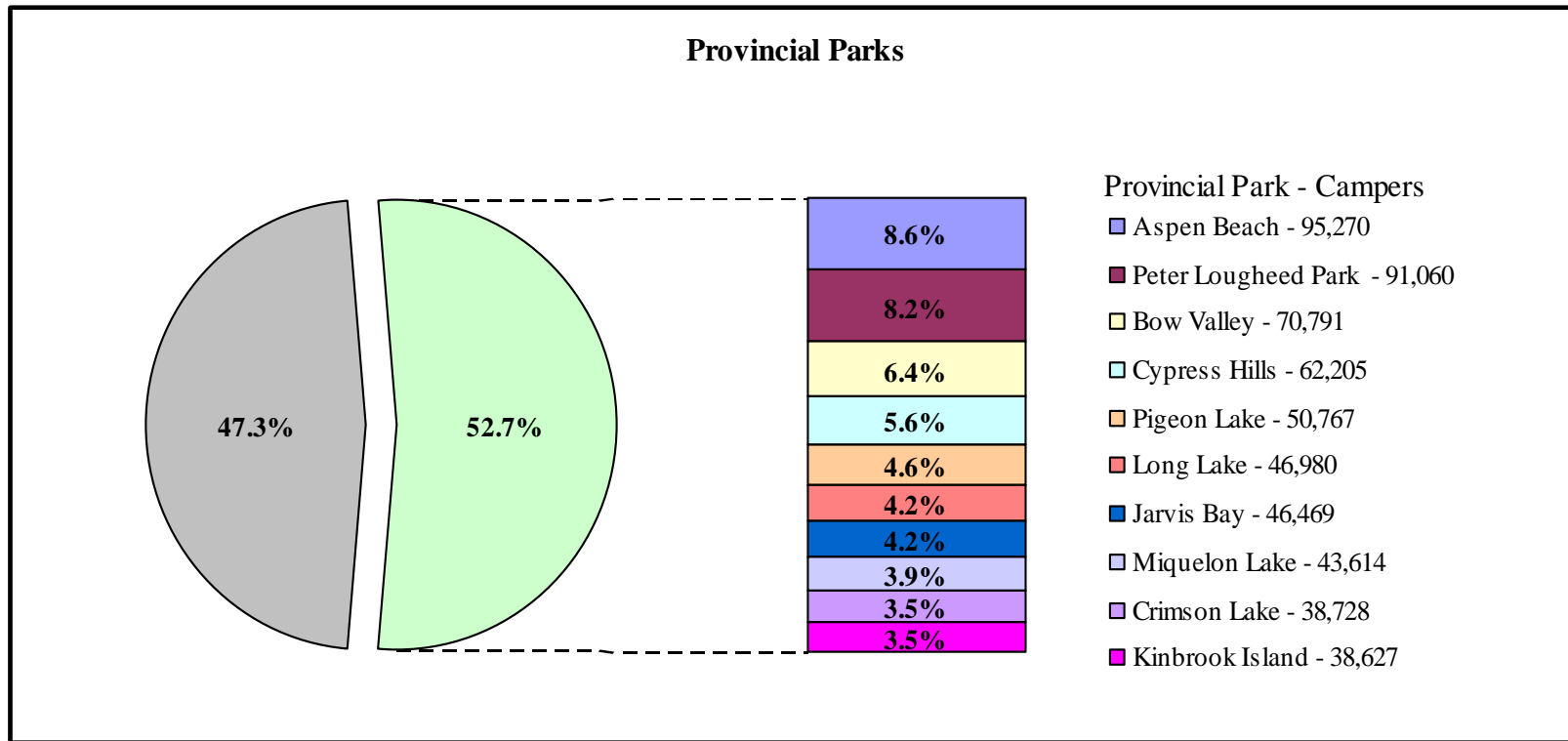
	1993/94	1994/95	1995/96	1996/97	1997/98	1998/99	1999/00	2000/01	2001/02	2002/03	% Change From Last Year
<b>Camping</b>											
Occupied Campsite Nights	453,176	498,533	483,667	489,739	512,301	522,940	517,671	450,692	488,972	473,940	-3.1
Campers	1,486,690	1,621,043	1,559,081	1,581,681	1,650,133	1,672,987	1,658,784	1,451,906	1,570,768	1,517,067	-3.4
Number of Campsites	13,251	12,775	12,789	12,471	13,079	13,320	13,383	13,110	13,124	13,248	0.9
Average Camping Party Size	3.2	3.2	3.0	3.2	3.2	3.2	3.2	3.2	3.2	3.2	
<b>Group Camping</b>											
Group Unit Nights	28,244	27,830	37,108	28,309	28,058	24,550	21,546	22,227	20,888	28,780	37.8
Group Campers	93,161	92,823	123,768	94,443	93,220	84,287	73,459	76,038	72,022	97,301	35.1
Average Group Camping Party Size	3.3	3.3	3.3	3.3	3.3	3.4	3.4	3.4	3.4	3.4	
<b>Day Use</b>											
Day Use Party Visits	2,838,818	2,780,349	2,552,280	2,723,050	2,555,300	2,617,790	2,610,063	2,571,904	2,457,908	2,434,465	-1.0
Day Use Visitors	7,258,239	6,987,767	6,598,503	7,101,787	6,575,563	6,705,994	6,656,029	6,968,480	6,704,861	6,628,354	-1.1
Average Day Use Party Size	2.6	2.6	2.6	2.6	2.6	2.6	2.6	2.7	2.7	2.7	
<b>Sub-Total Visitation</b>											
Parties	3,320,238	3,306,712	3,073,055	3,241,098	3,095,659	3,165,280	3,149,280	3,044,823	2,967,768	2,937,185	-1.0
Visitors	8,838,090	8,701,633	8,281,352	8,777,911	8,318,916	8,463,268	8,388,272	8,496,424	8,347,651	8,242,722	-1.3
<b>Fixed Roof (09)</b>											
Occupied Room Nights	102,032 <sup>1</sup>	106,300 <sup>1</sup>	103,562 <sup>1</sup>	82,825 <sup>1</sup>	41,093 <sup>1</sup>	97,035 <sup>1</sup>	95,686 <sup>1</sup>	116,909 <sup>1</sup>	116,776 <sup>1</sup>	3,815 <sup>2</sup>	<b>N/A</b>
Guests	204,374 <sup>1</sup>	213,485 <sup>1</sup>	204,107 <sup>1</sup>	174,832 <sup>1</sup>	170,189 <sup>1</sup>	198,717 <sup>1</sup>	193,571 <sup>1</sup>	233,818 <sup>1</sup>	238,032 <sup>1</sup>	15,641 <sup>2</sup>	<b>N/A</b>
<b>Total Visitation</b>											
Parties	3,422,270	3,413,012	3,176,617	3,323,923	3,136,752	3,262,315	3,244,966	3,161,732	3,084,544	2,941,000	-4.7
Visitors	9,042,464	8,915,118	8,485,459	8,952,748	8,489,105	8,661,985	8,581,843	8,730,241	8,585,682	8,258,363	-3.8

<sup>1</sup> Reported Use Based on William Watson Lodge and Kananaskis Village

<sup>2</sup> Reported Use Based on William Watson Lodge. Overnight stays for the hotels in Kananaskis Village no longer reported.

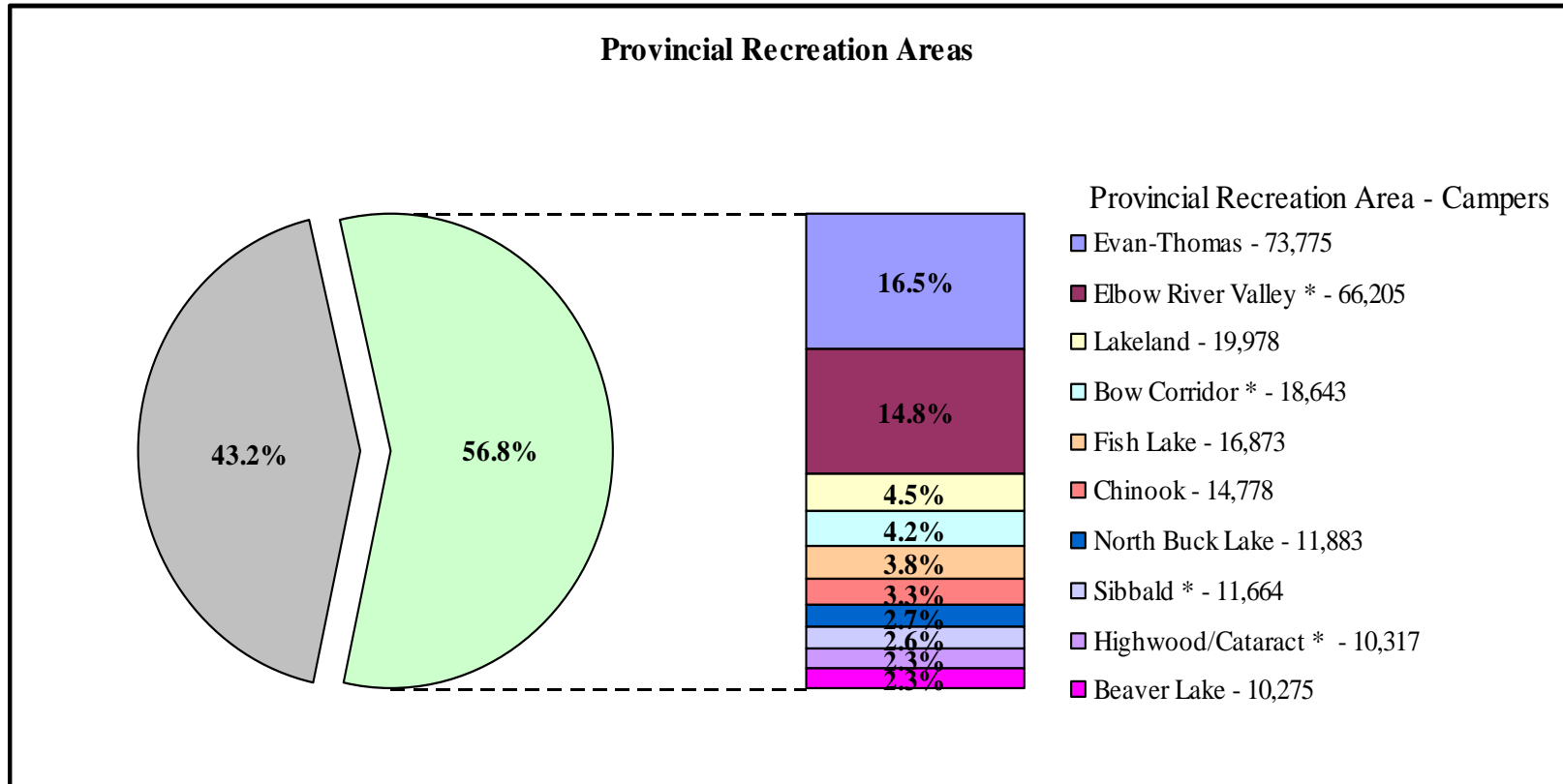


Figure 1a  
**Ten Most Visited Provincial Parks for Camping for 2002**



Note: 50 Provincial Parks are included in the 47.3%.

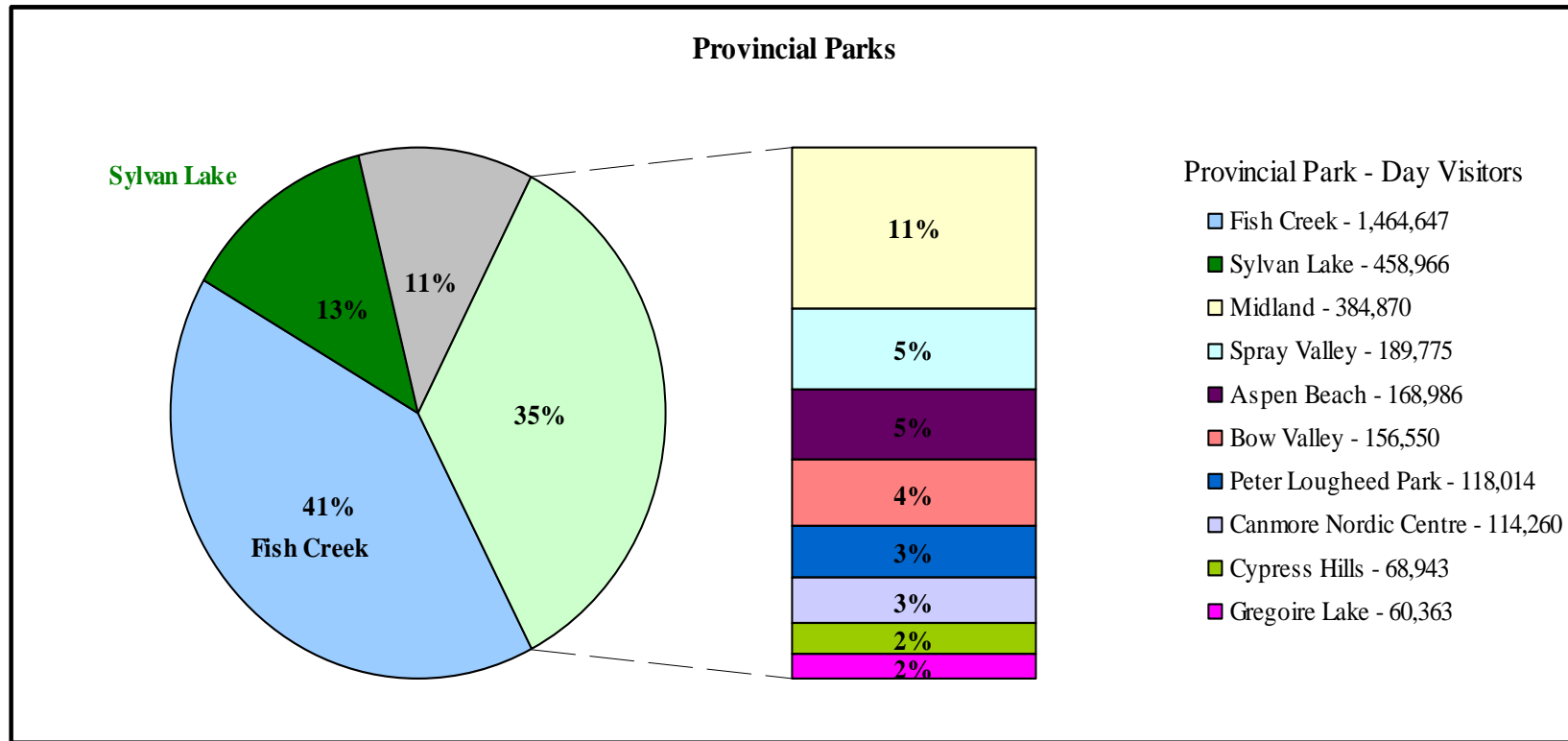
Figure 1b  
**Ten Most Visited Provincial Recreation Areas for Camping for 2002**



Note: 99 Provincial Recreation Areas are included in the 43.2%.

\* Geographic area within Kananaskis Country that includes several provincial recreation areas for reporting purposes.

Figure 2  
**Ten Most Visited Provincial Parks for Day Use for 2002**



Note: 52 Provincial Parks are included in the 11.0%. Fish Creek Provincial Park (41%), Sylvan Lake Provincial Park (13%) and the 8 other listed Provincial Parks (35%), combined represent 89% of total day use visitation.

Figure 3  
**Ten Most Visited Provincial Recreation Areas for Day Use for 2002**

Provincial Recreation Area	Day Visitors	Percent of Total
Elbow River Valley *	360,953	40
Evan-Thomas	174,500	19
Bow Corridor *	170,926	19
Ghost Reservoir	59,609	7
Sibbald *	46,344	5
Highwood/Cataract *	43,521	5
Figure Eight Lake	14,599	2
Bleriot Ferry	13,440	1
Cooking Lake-Blackfoot	13,174	1
Buffalo Lake	10,475	1
<b>Total</b>	<b>907,541</b>	<b>100</b>

Note: Provincial Recreation Areas (PRA's) with fewer than 10,000 day visitors (3 PRA's) are not included in the above table. In addition, day use visitation was not available for 22 PRA's.

\* Geographic area within Kananaskis Country that includes several provincial recreation areas for reporting purposes.

Figure 4  
Percent of Visitors by Type

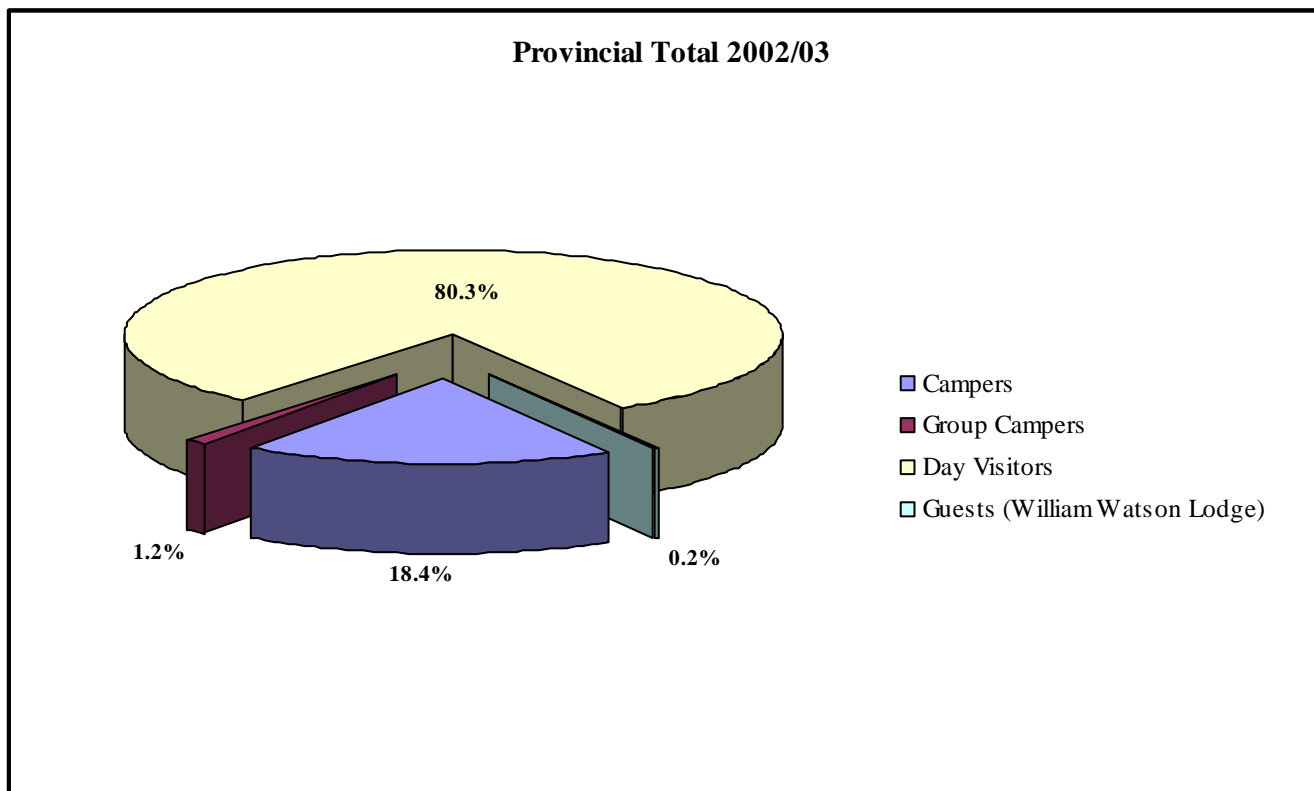
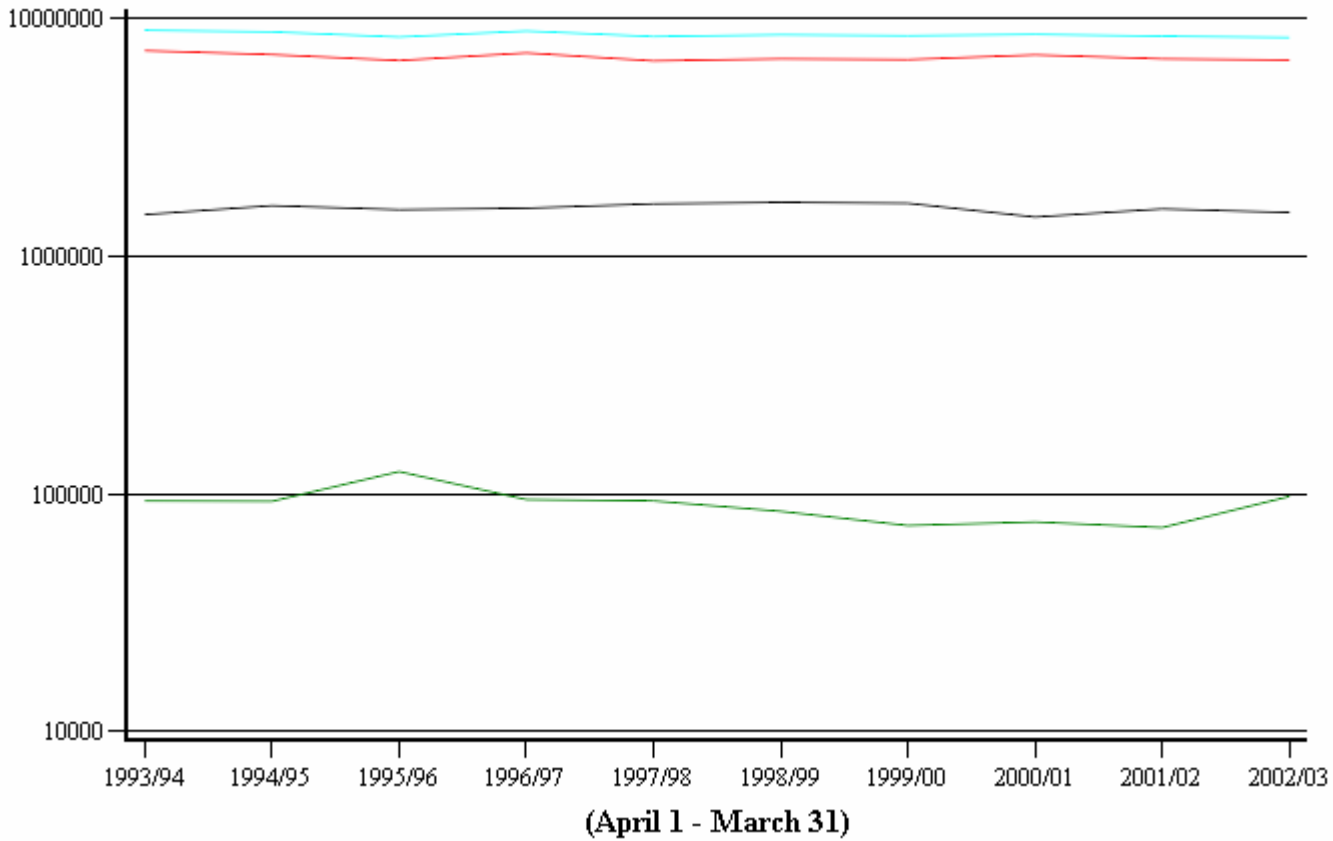






Figure 5  
Provincial Historic Visitation Summary

Visitation (logarithmic scale)



- Legend**
- Total Visitors
  - Day Use Visitors
  - Campers
  - Group Campers

**NOTE****Reading Visitation Summary Tables**

The following set of visitation summary tables present the number of visitors to Alberta's Provincial Parks and Recreation Areas. The categories of data found in these tables are shown in its column headings. Individual Provincial Parks are presented first, followed by Provincial Recreation Areas. Both are presented alphabetically.

Individual campground, group use or day use area statistics are presented for those Provincial Parks or Recreation Areas with multiple campgrounds, group use or day use areas. These are followed immediately by the park or recreation area total for all categories of data.

### Visitation Summary by Provincial Park - April 1, 2002 to October 31, 2002

Provincial Park - Campground, Group use area, or Day use area	Number of Campsites	Occupied Campsite Nights	Overflow Unit Nights	Campers	Group Unit Nights	Group Campers	Day Use Party Visits	Day Use Visitors	Total Parties	Total Visitors
Aspen Beach										
- Lakeview	280	12,846		44,274						
- Brewers Beach	306	14,725		50,996						
- Ebeling Beach (DM)							55,780	168,986		
- Aspen Beach: A					314	973				
- Aspen Beach: B					227	704				
- Aspen Beach: C					292	905				
- Aspen Beach: D					112	347				
- Aspen Beach: E					199	617				
- Aspen Beach: F					167	518				
Total	<b>586</b>	<b>27,571</b>		<b>95,270</b>	<b>1,311</b>	<b>4,064</b>	<b>55,780</b>	<b>168,986</b>	<b>84,662</b>	<b>268,320</b>
Beauvais Lake										
	85	3,098		9,448	191	688	ND	ND	3,289	10,136
Big Hill Springs (DUP)										
							ND	ND	ND	ND
Big Knife (DM/Day Use)										
	50	1,618		5,130			830	2,537	2,448	7,667
Blue Rock Wildland (KC)										
- Threepoint Mountain Backcountry	6	ND		ND						
Total	<b>6</b>	<b>ND</b>		<b>ND</b>					<b>ND</b>	<b>ND</b>
Bow Valley (KC, DM/Day Use)										
- Willow Rock	124	4,277		11,482						
- Bow Valley	169	19,684		58,241						
- Jewel Bay Backcountry	9	241		1,068						
- Elk Flats					317	1,242				
- Canoe Meadows					1,700	5,270				
- Porcupine					759	2,976				
- Grouse					691	2,695				
- Old Church Camp: Owl					673	2,221				
Total	<b>302</b>	<b>24,202</b>		<b>70,791</b>	<b>4,140</b>	<b>14,404</b>	<b>62,620</b>	<b>156,550</b>	<b>90,962</b>	<b>241,745</b>
Bow Valley Wildland (KC)										
- Quait Valley Backcountry	20	345		1,188						
Total	<b>20</b>	<b>345</b>		<b>1,188</b>			<b>3,250</b>	<b>8,125</b>	<b>3,595</b>	<b>9,313</b>
Calling Lake										
	25	ND		ND			ND	ND	ND	ND
Canmore Nordic Centre (KC, DUP)										
							39,400	114,260	39,400	114,260

**DM** Data Missing for one or more month(s)

**KC** Kananaskis Country

**ND** No Data available

**DUP** Day Use ONLY Park

**Note:** If overflow unit nights are reported, they are also included in the park total for occupied campsites nights.

**Visitation Summary by Provincial Park - April 1, 2002 to October 31, 2002**

<b>Provincial Park - Campground, Group use area, or Day use area</b>	<b>Number of Campsites</b>	<b>Occupied Campsite Nights</b>	<b>Overflow Unit Nights</b>	<b>Campers</b>	<b>Group Unit Nights</b>	<b>Group Campers</b>	<b>Day Use Party Visits</b>	<b>Day Use Visitors</b>	<b>Total Parties</b>	<b>Total Visitors</b>
Carson-Pegasus	182	12,674	49	36,069	441	1,499	7,130	19,979	20,245	57,547
Chain Lakes	125	3,296		9,864	668	2,629	<b>ND</b>	<b>ND</b>	3,964	12,493
Cold Lake	117	3,856		11,585	<b>ND</b>	<b>ND</b>	<b>ND</b>	<b>ND</b>	3,856	11,585
Crimson Lake										
- Crimson Lake	170	9,897		33,147	283	1,104	<b>ND</b>	<b>ND</b>		
- Twin Lakes	40	1,621		5,581	578	1,850	<b>ND</b>	<b>ND</b>		
<b>Total</b>	<b>210</b>	<b>11,518</b>		<b>38,728</b>	<b>861</b>	<b>2,953</b>	<b>ND</b>	<b>ND</b>	<b>12,379</b>	<b>41,681</b>
Cross Lake ( <b>DM</b> )	130	2,539		7,617	<b>ND</b>	<b>ND</b>	<b>ND</b>	<b>ND</b>	2,539	7,617
Cypress Hills										
- Elkwater	80	7,149		22,267						
- Beaver Creek	39	2,142		5,883						
- Ferguson Hill	50	2,063		7,102						
- Lodge Pole	49	1,523		5,072						
- Firerock	99	4,337		14,112						
- Reesor Lake	40	1,797		5,693						
- Reesor Lake Dock	24	141		365						
- Spruce Coulee	10	316		999						
- Nicholl Springs	10	10		28						
- Battle Creek	16	164		529						
- Hwy. #41					<b>ND</b>	<b>ND</b>				
- Main					<b>ND</b>	<b>ND</b>				
- Willow Creek Equestrian ( <b>DM</b> )					4	16				
- Old Girl Guide ( <b>DM</b> )					10	39				
- Elkwater Townsite ( <b>DM</b> )							23,340	69,105		
- Reesor Lake/Spruce Coulee							<b>ND</b>	<b>ND</b>		
<b>Total</b>	<b>417</b>	<b>19,691</b>	<b>49</b>	<b>62,205</b>	<b>14</b>	<b>55</b>	<b>23,280</b>	<b>68,943</b>	<b>42,985</b>	<b>131,203</b>
Dillberry Lake	73	735		2,548	<b>ND</b>	<b>ND</b>	1,690	5,525	2,425	8,073
Dinosaur	126	9,607		30,732	542	2,114	12,160	42,644	22,309	75,490
Don Getty Wildland ( <b>KC</b> )										
- Big Elbow Backcountry	6	<b>ND</b>		<b>ND</b>					<b>ND</b>	<b>ND</b>

**DM** Data Missing for one or more month(s)

**ND** No Data available

**KC** Kananaskis Country

**Note:** If overflow unit nights are reported, they are also included in the park total for occupied campsite nights.

### Visitation Summary by Provincial Park - April 1, 2002 to October 31, 2002

Provincial Park - Campground, Group use area, or Day use area	Number of Campsites	Occupied Campsite Nights	Overflow Unit Nights	Campers	Group Unit Nights	Group Campers	Day Use Party Visits	Day Use Visitors	Total Parties	Total Visitors
<b>Dry Island Buffalo Jump</b>										
- Dry Island Buffalo Jump							3,580	11,629		
- Tolman East	36	1,365		4,974			5,220	15,009		
- Tolman West (DM/Day Use)	30	683		2,495			510	1,402		
Total	<b>66</b>	<b>2,048</b>		<b>7,469</b>			<b>8,300</b>	<b>24,533</b>	<b>10,348</b>	<b>32,002</b>
<b>Dunvegan</b>										
	67	2,739		8,217			ND	ND	2,739	8,217
<b>Elbow-Sheep Wildland (KC)</b>										
- Romulus Backcountry	14	ND		ND						
- Tombstone Backcountry	11	ND		ND						
Total	<b>25</b>	<b>ND</b>		<b>ND</b>			<b>1,780</b>	<b>4,450</b>	<b>1,780</b>	<b>4,450</b>
<b>Fish Creek (DUP)</b>										
- Ranch Area							133,790	284,793		
- Votier's Flats							49,770	117,056		
- Mallard Point							34,360	63,540		
- Glennfield							131,510	282,217		
- Bankside / Burnsmead							27,370	52,159		
- Sikome Lake/Hulls Wood							182,590	365,208		
- Shannon Terrace							58,720	138,258		
- Bebo Grove							86,740	196,607		
Total							<b>700,449</b>	<b>1,464,647</b>	<b>700,449</b>	<b>1,464,647</b>
<b>Garner Lake</b>										
	66	1,673		5,216			ND	ND	1,673	5,216
<b>Gooseberry Lake (01)</b>										
	82	1,354		4,062	ND	ND	2,640	6,072	3,994	10,134
<b>Gregoire Lake</b>										
- Gregoire Lake							21,260	46,772		
- Anzac							ND	ND		
Total	<b>140</b>	<b>7,301</b>		<b>24,615</b>	<b>524</b>	<b>1,572</b>	<b>21,210</b>	<b>60,363</b>	<b>29,035</b>	<b>86,550</b>
<b>Hilliard's Bay</b>										
- Area: A					455	1,911				
- Area: B					65	221				
- Area: C					265	901				
Total	<b>189</b>	<b>3,045</b>		<b>10,200</b>	<b>785</b>	<b>3,033</b>	<b>3,280</b>	<b>10,301</b>	<b>7,110</b>	<b>23,534</b>

**01** Reported camping estimated

**DUP** Day Use ONLY Park

**ND** No Data available

**KC** Kananaskis Country

**Note:** If overflow unit nights are reported, they are also included in the park total for occupied campsite nights.

### Visitation Summary by Provincial Park - April 1, 2002 to October 31, 2002

Provincial Park - Campground, Group use area, or Day use area	Number of Campsites	Occupied Campsite Nights	Overflow Unit Nights	Campers	Group Unit Nights	Group Campers	Day Use Party Visits	Day Use Visitors	Total Parties	Total Visitors
Jarvis Bay										
- Area: A					245	760				
- Area: B					484	1,500				
Total	<b>200</b>	<b>14,309</b>		<b>46,469</b>	<b>729</b>	<b>2,260</b>			<b>15,038</b>	<b>48,729</b>
Kinbrook Island	166	11,361		38,627	365	1,424	ND	ND	11,726	40,051
Lesser Slave Lake										
- Marten River	113						ND	ND		
- North Shore							ND	ND		
- Lily Creek					344	998				
- Marten River Youth Camp					451	1,804				
- Golf Course					ND	ND				
- Marten Mountain							ND	ND		
Total	<b>113</b>	<b>6,432</b>		<b>22,976</b>	<b>795</b>	<b>2,802</b>	ND	ND	<b>7,227</b>	<b>25,778</b>
Little Bow										
- Deer Coulee					ND	ND				
- Little Bow					ND	ND				
Total	<b>205</b>	ND		ND	ND	ND	ND	ND	ND	ND
Little Fish Lake (DM/Day Use)	14	197		689			400	1,148	597	1,837
Long Lake										
- Long Lake: A					332	1,062				
- Long Lake: B					355	1,136				
Total	<b>220</b>	<b>14,709</b>		<b>46,980</b>	<b>687</b>	<b>2,198</b>	<b>9,650</b>	<b>28,158</b>	<b>25,046</b>	<b>77,336</b>
Midland (03, DUP)										
- Mine Site 1 2 3							ND	ND		
- McMullen Island							ND	ND		
- Tyrell Museum							ND	ND		
Total							<b>106,908</b>	<b>384,870</b>	<b>106,908</b>	<b>384,870</b>

**03** Reported day use estimated

**ND** No Data available

**DM** Data Missing for one or more month(s)

**DUP** Day Use ONLY Park

**Note:** If overflow unit nights are reported, they are also included in the park total for occupied campsites nights.

### Visitation Summary by Provincial Park - April 1, 2002 to October 31, 2002

Provincial Park - Campground, Group use area, or Day use area	Number of Campsites	Occupied Campsite Nights	Overflow Unit Nights	Campers	Group Unit Nights	Group Campers	Day Use Party Visits	Day Use Visitors	Total Parties	Total Visitors
Miquelon Lake										
- Miquelon Lake: 1					238	750				
- Miquelon Lake: 2					195	624				
- Miquelon Lake: 3					108	346				
- Miquelon Lake: 4					112	358				
- Miquelon Lake: 5					206	659				
- Miquelon Lake: 6					548	1,656				
- Miquelon Lake: 7					417	1,334				
Total	<b>275</b>	<b>13,585</b>		<b>43,614</b>	<b>1,824</b>	<b>5,728</b>	<b>11,180</b>	<b>33,528</b>	<b>26,589</b>	<b>82,870</b>
Moonshine Lake	110	4,195		14,452	270	756	7,120	20,421	11,585	35,629
Moose Lake	59	1,488		4,464	<b>ND</b>	<b>ND</b>	<b>ND</b>	<b>ND</b>	1,488	4,464
Notikewin	19	99		359			<b>ND</b>	<b>ND</b>	99	359
O'Brien ( <b>DUP</b> )							<b>ND</b>	<b>ND</b>	<b>ND</b>	<b>ND</b>
Park Lake ( <b>DM/Camping</b> )										
- Park Lake: A ( <b>DM</b> )					162	437				
- Park Lake: B ( <b>DM</b> )					130	312				
- Park Lake: Main Area										
- Park Lake: Boat Launch										
Total	<b>40</b>	<b>892</b>		<b>3,131</b>	<b>292</b>	<b>749</b>	<b>ND</b>	<b>ND</b>	<b>1,184</b>	<b>3,880</b>
Pembina River ( <b>DM</b> )	132	3,647		10,738	159	493	6,250	17,209	10,056	28,440
Peter Lougheed Park ( <b>KC</b> )										
- Canyon	52	2,019		6,270						
- William Watson ( <b>DM</b> )	20	421		1,176						
- Elkwood	130	7,211		24,517						
- Boulton Creek	118	7,036		22,971						
- Lower Lake ( <b>DM/Camping</b> )	104	2,955		9,829	895	2,596				
- Mount Sarraill	44	1,165		3,231						
- Interlakes	48	4,100		12,883						
- Elbow Lake Backcountry	15	380		1,381						
- Point Backcountry	20	880		3,568						
- Forks Backcountry	15	533		2,108						
- Three Island Lake Backcountry	16	373		1,308						
- Turbine Canyon Backcountry	12	301		1,086						
- Aster Lake Backcountry	5	186		732						
- Pocaterra					580	1,566				
Total	<b>601</b>	<b>27,560</b>		<b>91,060</b>	<b>1,475</b>	<b>4,162</b>	<b>45,390</b>	<b>118,014</b>	<b>74,425</b>	<b>213,236</b>

**DM** Data Missing for one or more month(s)

**DUP** Day Use ONLY Park

**ND** No Data available

**KC** Kananaskis Country

**Note:** If overflow unit nights are reported, they are also included in the park total for occupied campsite nights.

### Visitation Summary by Provincial Park - April 1, 2002 to October 31, 2002

Provincial Park - Campground, Group use area, or Day use area	Number of Campsites	Occupied Campsite Nights	Overflow Unit Nights	Campers	Group Unit Nights	Group Campers	Day Use Party Visits	Day Use Visitors	Total Parties	Total Visitors
Pigeon Lake										
- Pigeon Lake	300	9,604		32,344			ND	ND		
- Zeiner	110	5,090		18,424			5,270	18,911		
- Pigeon Lake: A (DM)					160	592				
- Pigeon Lake: B					ND	ND				
- Pigeon Lake: C					ND	ND				
- Pigeon Lake: D					ND	ND				
Total	<b>410</b>	<b>14,694</b>		<b>50,767</b>	<b>160</b>	<b>592</b>	<b>5,270</b>	<b>18,212</b>	<b>20,124</b>	<b>69,571</b>
Police Outpost										
	46	ND		ND			ND	ND	ND	ND
Queen Elizabeth										
	56	1,606		5,133	182	619	8,940	23,985	10,728	29,737
Red Lodge (DM)										
	120	4,312		15,047			4,020	15,412	8,332	30,459
Rochon Sands (DM/Group Use)										
	69	2,532		9,259	225	743	6,260	17,919	9,017	27,921
Saskatoon Island (DM/Group Use)										
	96	6,407		19,733	318	1,081	ND	ND	6,725	20,814
Sheep River (KC, 03)										
- Sandy McNabb	98	2,918		9,921						
- Sandy McNabb Equestrian	21	717		2,450						
- Blue Rock	66	2,782		9,092						
- Blue Rock Equestrian	17	366		1,309						
- Wolf Creek Backcountry	5	ND		ND						
- Sandy McNabb: A					595	1,926				
- Sandy McNabb: B					489	1,411				
Total	<b>207</b>	<b>6,783</b>		<b>22,773</b>	<b>1,084</b>	<b>3,337</b>	<b>15,195</b>	<b>37,986</b>	<b>23,062</b>	<b>64,096</b>
Sir Winston Churchill										
	72	2,069		6,414			ND	ND	2,069	6,414
Spray Valley (KC, IC)										
- Spray Lakes West	50	3,959		12,490						
- Eau Claire	51	3,057		9,022						
- Ribbon Falls Backcountry	11	236		968						
- Ribbon Lake Backcountry	20	337		1,584						
- Lillian Lake Backcountry	18	840		4,032						
Total	<b>150</b>	<b>8,689</b>	<b>260</b>	<b>28,901</b>			<b>75,910</b>	<b>189,775</b>	<b>84,599</b>	<b>218,676</b>
Strathcona Science (DUP)										
							ND	ND	ND	ND
Sundance										
	13	ND		ND					ND	ND

**03** Reported day use estimated

**KC** Kananaskis Country

**IC** Includes day use for Evan-Thomas Area

**DM** Data Missing for one or more month(s)

**ND** No Data available

**DUP** Day Use ONLY Park

**Note:** If overflow unit nights are reported, they are also included in the park total for occupied campsite nights.



### Visitation Summary by Provincial Park - April 1, 2002 to October 31, 2002

Provincial Park - Campground, Group use area, or Day use area	Number of Campsites	Occupied Campsite Nights	Overflow Unit Nights	Campers	Group Unit Nights	Group Campers	Day Use Party Visits	Day Use Visitors	Total Parties	Total Visitors
Sylvan Lake (DM)							114,741	458,966	114,741	458,966
Thunder Lake (01)										
- Thunder Lake: Boat Launch							ND	ND		
- Thunder Lake: Main Area							ND	ND		
- Tenting Area 3					ND	ND				
- Island View					ND	ND				
Total	127	5,797		18,549	ND	ND	ND	ND	5,797	18,549
Tillebrook	120	5,998		14,936			ND	ND	5,998	14,936
Vermilion										
- Vermilion: A					92	340				
- Vermilion: B					ND	ND				
- Vermilion: C					65	208				
- West					ND	ND				
Total	111	2,071		5,829	157	548	8,590	21,840	10,818	28,217
Wabamun Lake (01)										
- Wabamun Lake: A					ND	ND				
- Wabamun Lake: B					ND	ND				
Total	287	8,610		25,829	ND	ND	ND	ND	8,610	25,829
Whitney Lakes										
- Ross Lake	147	1,687		5,439			ND	ND		
- Whitney Lake	50	234		889			ND	ND		
- Ernies Point							ND	ND		
- Ross Lake: G (DM)					178	712				
- Ross Lake: H (DM)					88	185				
Total	197	1,921		6,328	266	897	ND	ND	2,187	7,225

**01** Reported camping estimated

**ND** No Data available

**DM** Data Missing for one or more month(s)

**Note:** If overflow unit nights are reported, they are also included in the park total for occupied campsite nights.

### Visitation Summary by Provincial Park - April 1, 2002 to October 31, 2002

Provincial Park - Campground, Group use area, or Day use area	Number of Campsites	Occupied Campsite Nights	Overflow Unit Nights	Campers	Group Unit Nights	Group Campers	Day Use Party Visits	Day Use Visitors	Total Parties	Total Visitors
William A Switzer										
- Jarvis Lake	24	976		3,405			ND	ND		
- Cache)	14	246		865						
- Graveyard/Halfway	18	319		774						
- Gregg Lake (DM/Day Use)	168	4,696		15,497			1,840	5,066		
- Beaver Ranch					312	842				
- Pine Bay					558	1,674				
- Nordic Centre					156	530				
- Cache/Graveyard							850	1,785		
- Kelley's Bathtub							ND	ND		
Total	<b>224</b>	<b>6,237</b>		<b>20,541</b>	<b>1,026</b>	<b>3,047</b>	<b>2,210</b>	<b>5,039</b>	<b>9,473</b>	<b>28,627</b>
Williamson										
	67	1,383		4,403			ND	ND	1,383	4,403
Willow Creek										
	40	1,637		5,575			ND	ND	1,637	5,575
Winagami Lake										
	63	2,184		7,708	125	425	4,190	13,714	6,499	21,847
Woolford (DM)										
	30	130		447	59	230	ND	ND	189	677
Writing-On-Stone										
- Group Use A (DM)					239	932				
- Group Use B (DM)					106	413				
Total	<b>64</b>	<b>4,735</b>	<b>67</b>	<b>16,222</b>	<b>345</b>	<b>1,346</b>	<b>7,560</b>	<b>24,871</b>	<b>12,640</b>	<b>42,439</b>
Wyndham-Carseland (DM/Camping)										
- Carseland: A (DM)					484	1,888				
- Carseland: B					ND	ND				
- Carseland: C					ND	ND				
- Wyndham: Main							ND	ND		
- Wyndham: Johnson Island							ND	ND		
- Wyndham: Weir							ND	ND		
Total	<b>196</b>	<b>3,580</b>		<b>11,495</b>	<b>484</b>	<b>1,888</b>	<b>ND</b>	<b>ND</b>	<b>4,064</b>	<b>13,383</b>
Young's Point										
	92	3,193		9,355	316	1,059	2,020	5,928	5,529	16,342

ND No Data available

DM Data Missing for one or more month(s)

Note: If overflow unit nights are reported, they are also included in the park total for occupied campsite nights.

**Visitation Summary by Provincial Recreation Area - April 1, 2002 to October 31, 2002**

<b>Provincial Recreation Area - Campground, Group use area, or Day use area</b>	<b>Number of Campsites</b>	<b>Occupied Campsite Nights</b>	<b>Overflow Unit Nights</b>	<b>Campers</b>	<b>Group Unit Nights</b>	<b>Group Campers</b>	<b>Day Use Party Visits</b>	<b>Day Use Visitors</b>	<b>Total Parties</b>	<b>Total Visitors</b>
Aylmer	7	96		291					96	291
Beaverdam	11	199		599					199	599
Beaver Lake	87	3,427		10,275	<b>ND</b>	<b>ND</b>	<b>ND</b>	<b>ND</b>	3,427	10,275
Big Berland	18	380		1,066					380	1,066
Blackstone	10	154		465					154	465
Bleriot Ferry	28	1,945		6,624			4,800	13,440	6,745	20,064
<b>Bow Corridor (KC, RA, DM/Day Use)</b>										
- Lac Des Arcs	28	1,177		3,773						
- Three Sisters	36	2,572		7,566						
- Bow River	32	2,519		7,305						
<b>Total</b>	<b>96</b>	<b>6,268</b>		<b>18,643</b>			<b>58,930</b>	<b>170,926</b>	<b>65,198</b>	<b>189,569</b>
<b>Brazeau Reservoir</b>										
- Reservoir	33	1,491		4,523						
- West Canal	18	876		2,647						
- East Canal	18	85		260						
<b>Total</b>	<b>69</b>	<b>2,839</b>	<b>387</b>	<b>8,632</b>	<b>396</b>	<b>1,549</b>			<b>3,235</b>	<b>10,181</b>
Brazeau River	7	213		646					213	646
Brown Creek	9	173		520					173	520
Buck Lake (▲)	27	750		2,250			<b>ND</b>	<b>ND</b>	750	2,250
Buffalo Lake	30	1,376		4,880			4,190	10,475	5,566	15,355
Calhoun Bay (▲)	50	975		2,925			<b>ND</b>	<b>ND</b>	975	2,925
Cartier Creek	19	105		322					105	322
Castle River	20	<b>ND</b>		<b>ND</b>					<b>ND</b>	<b>ND</b>
Chambers Creek	25	1,048		3,170	392	1,537			1,440	4,707
Chinook	74	4,618		14,778					4,618	14,778
Coal Lake North	10	59		184					59	184

**ND** No Data available

**KC** Kananaskis Country

**▲** Camping estimated for one or more month(s)

**DM** Data Missing for one or more month(s)

**RA** Consolidation of Recreation Areas for reporting purposes.

**Note:** If overflow unit nights are reported, they are also included in the recreation area total for occupied campsite nights.

### Visitation Summary by Provincial Recreation Area - April 1, 2002 to October 31, 2002

Provincial Recreation Area - Campground, Group use area, or Day use area	Number of Campsites	Occupied Campsite Nights	Overflow Unit Nights	Campers	Group Unit Nights	Group Campers	Day Use Party Visits	Day Use Visitors	Total Parties	Total Visitors
Coal Lake South	14	196		615					196	615
Coalspur	8	<b>ND</b>		<b>ND</b>					<b>ND</b>	<b>ND</b>
Cooking Lake-Blackfoot ( <b>DUR</b> )										
- Central ( <b>DM</b> )							1,070	3,126		
- Waskahegan ( <b>DM</b> )							3,440	8,148		
- Islet Lake ( <b>DM</b> )							1,000	2,560		
- Blackfoot Lake ( <b>DM</b> )							900	2,052		
Total							<b>5,510</b>	<b>13,174</b>	<b>5,510</b>	<b>13,174</b>
Crane Lake East ( <b>▲</b> )	26	1,300		3,900			<b>ND</b>	<b>ND</b>	1,300	3,900
Crane Lake West ( <b>▲</b> )	24	1,958		5,874			<b>ND</b>	<b>ND</b>	1,958	5,874
Crescent Falls	31	1,833		5,518					1,833	5,518
Deer Creek					120	468			120	468
Dickson Dam: Dickson Point ( <b>DM</b> )	25	470		1,273					470	1,273
Dickson Dam: North Dyke ( <b>DM</b> )	30	449		1,222					449	1,222
Dickson Dam: South Dyke										
- South Dyke ( <b>DM</b> )	20	307		828						
- South Boat Launch					<b>ND</b>	<b>ND</b>				
Total	<b>20</b>	<b>307</b>		<b>828</b>	<b>ND</b>	<b>ND</b>			<b>307</b>	<b>828</b>
Dry Haven	14	362		1,091					362	1,091
Dutch Creek	43	1,867		5,603					1,867	5,603

**DM** Data Missing for one or more month(s)

**ND** No Data available

**▲** Camping estimated for one or more month(s)

**DUR** Day Use ONLY Recreation Area

**Note:** If overflow unit nights are reported, they are also included in the recreation area total for occupied campsite nights.

### Visitation Summary by Provincial Recreation Area - April 1, 2002 to October 31, 2002

Provincial Recreation Area - Campground, Group use area, or Day use area	Number of Campsites	Occupied Campsite Nights	Overflow Unit Nights	Campers	Group Unit Nights	Group Campers	Day Use Party Visits	Day Use Visitors	Total Parties	Total Visitors
<b>Elbow River Valley (KC, RA, 03)</b>										
- Gooseberry (DM)	83	3,227		9,970						
- McLean Creek (DM)	170	7,857		23,632						
- North Fork	24	841		2,972						
- Fisher Creek	30	237		758						
- Mesa Butte Equestrian	15	363		1,030	382	1,184				
- Paddys Flat	98	3,480		12,160	ND	ND				
- Beaver Flats	55	1,788		5,842						
- Little Elbow	140	3,286		9,662						
- Wildhorse Backcountry	5	ND		ND						
- River Cove					ND	ND				
Total	<b>620</b>	<b>21,079</b>		<b>66,025</b>	<b>382</b>	<b>1,184</b>	<b>144,381</b>	<b>360,953</b>	<b>165,842</b>	<b>428,162</b>
Elk Creek	13	181		550					181	550
Elk River	16	33		101					33	101
English Bay	30	ND		ND			ND	ND	ND	ND
Engstrom Lake	12	303		909					303	909
<b>Evan-Thomas (KC)</b>										
- Mount Kidd RV	229	20,606		73,775						
- Sundance Lodge	30	ND		ND						
Total	<b>229</b>	<b>20,606</b>		<b>73,775</b>			<b>69,800</b>	<b>174,500</b>	<b>90,406</b>	<b>248,275</b>
Fairfax Lake	39	868		2,368					868	2,368
Fallen Timber	20	581		1,984					581	1,984
Fickle Lake	41	ND		ND					ND	ND
Figure Eight Lake	19	999		2,944			5,150	14,599	6,149	17,543
Fish Lake	91	5,633		16,873					5,633	16,873
Fork Lake	43	ND		ND			ND	ND	ND	ND
Franchere Bay (▲)	200	2,250		6,750			ND	ND	2,250	6,750
French Bay	10	456		1,254			ND	ND	456	1,254
<b>Ghost Reservoir</b>										
- North Entrance (DM)							16,703	35,076		
- South Entrance	112	ND		ND			16,485	36,267		
Total	<b>112</b>	<b>ND</b>		<b>ND</b>			<b>27,095</b>	<b>59,609</b>	<b>27,095</b>	<b>59,609</b>

**ND** No Data available  
**KC** Kananaskis Country  
**03** Reported day use estimated

**DM** Data Missing for one or more month(s)  
**RA** Consolidation of Recreation Areas for reporting purposes.  
**▲** Camping estimated for one or more month(s)

**Note:** If overflow unit nights are reported, they are also included in the recreation area total for occupied campsite nights.

**Visitation Summary by Provincial Recreation Area - April 1, 2002 to October 31, 2002**

<b>Provincial Recreation Area - Campground, Group use area, or Day use area</b>	<b>Number of Campsites</b>	<b>Occupied Campsite Nights</b>	<b>Overflow Unit Nights</b>	<b>Campers</b>	<b>Group Unit Nights</b>	<b>Group Campers</b>	<b>Day Use Party Visits</b>	<b>Day Use Visitors</b>	<b>Total Parties</b>	<b>Total Visitors</b>
Goldeye Lake	44	1,592		4,795					1,592	4,795
Hangingstone	57	913		2,861			ND	ND	913	2,861
Hanmore Lake	30	1,475		4,552			ND	ND	1,475	4,552
Harlech	17	453		1,365					453	1,365
Heart River Dam	4	ND		ND					ND	ND
<b>Highwood/Cataract (KC, RA, 03)</b>										
- Strawberry Equestrian	18	89		249						
- Etherington Creek	61	1,121		3,266	506	1,479				
- Etherington Creek Equestrian	10	63		172						
- Cataract	102	1,728		5,335						
- Greenford	13	370		1,295						
- Highwood River					407	1,155				
<b>Total</b>	<b>204</b>	<b>3,371</b>		<b>10,317</b>	<b>913</b>	<b>2,634</b>	<b>17,408</b>	<b>43,521</b>	<b>21,692</b>	<b>56,472</b>
Horburg	12	230		702					230	702
Hornbeck Creek	33	ND		ND			ND	ND	ND	ND
Indian Graves	44	ND		ND			ND	ND	ND	ND
Island Lake	41	606		1,826			ND	ND	606	1,826
Jackfish Lake	5	235		709					235	709
James River Bridge	8	155		488					155	488
James Wilson	17	251		760					251	760
Kehiwin	46	1,236		3,648			ND	ND	1,236	3,648
Kootenay Plains	24	1,574		4,706	1,954	7,634			3,528	12,340
<b>Lakeland (27)</b>										
- Pinehurst Lake	70	2,655		9,285						
- Touchwood Lake	100	2,124		7,421						
- Seibert Lake	47	770		2,695						
- Ironwood Lake	20	165		578						
<b>Total</b>	<b>237</b>	<b>5,714</b>		<b>19,978</b>			<b>ND</b>	<b>ND</b>	<b>5,714</b>	<b>19,978</b>
Lambert Creek	7	ND		ND					ND	ND
Little Bow Reservoir	25	ND		ND					ND	ND
Little Sundance Creek	8	ND		ND					ND	ND

**ND** No Data available

**KC** Kananaskis Country

**03** Reported day use estimated

**27** No methodology in place to collect day use statistics.

**RA** Consolidation of Recreation Areas for reporting purposes.

**Note:** If overflow unit nights are reported, they are also included in the recreation area total for occupied campsite nights.

### Visitation Summary by Provincial Recreation Area - April 1, 2002 to October 31, 2002

Provincial Recreation Area - Campground, Group use area, or Day use area	Number of Campsites	Occupied Campsite Nights	Overflow Unit Nights	Campers	Group Unit Nights	Group Campers	Day Use Party Visits	Day Use Visitors	Total Parties	Total Visitors
Livingstone Falls	22	939		2,825					939	2,825
Lovett River	17	179		486					179	486
Lundbreck Falls	65	3,518		9,876			ND	ND	3,518	9,876
Maqua Lake	13	265		806					265	806
Maycroft	12	ND		ND					ND	ND
McLeod River	22	ND		ND					ND	ND
Medicine Lake	49	1,585		4,965					1,585	4,965
Minnie Lake	8	110		340			ND	ND	110	340
Mitchell Lake	5	132		401					132	401
North Buck Lake	125	3,497		11,883			ND	ND	3,497	11,883
North Ram River	28	346		1,041					346	1,041
Old Man River	40	1,341		3,996					1,341	3,996
Old Man River Dam										
- Cottonwood	82	1,787		5,390						
- Chinook RV	30	222		662						
- Island View	40	40		121						
- Windy Point	20	183		556						
Total	<b>172</b>	<b>2,232</b>		<b>6,728</b>	<b>ND</b>	<b>ND</b>			<b>2,232</b>	<b>6,728</b>
Oldman River North	10	260		785	ND	ND			260	785
Payne	30	ND		ND			ND	ND	ND	ND
Pembina Forks	20	330		896					330	896
Peppers Lake	16	797		2,395					797	2,395
Phyllis Lake	8	1,021		3,051					1,021	3,051
Pierre Grey's Lakes	83	3,565		10,187					3,565	10,187
Prairie Creek	50	1,446		4,400					1,446	4,400
Prairie Creek Group					713	2,788			713	2,788
Racehorse	38	1,119		3,369					1,119	3,369
Ram Falls	54	1,209		3,640	127	495			1,336	4,135
Raven (DM)	16	47		123					47	123

ND No Data available

DM Data Missing for one or more month(s)

**Note:** If overflow unit nights are reported, they are also included in the recreation area total for occupied campsite nights.

### Visitation Summary by Provincial Recreation Area - April 1, 2002 to October 31, 2002

Provincial Recreation Area - Campground, Group use area, or Day use area	Number of Campsites	Occupied Campsite Nights	Overflow Unit Nights	Campers	Group Unit Nights	Group Campers	Day Use Party Visits	Day Use Visitors	Total Parties	Total Visitors
Red Deer River	64	225		680					225	680
Rock Lake	93	1,077		3,098					1,077	3,098
Saunders	7	161		485					161	485
Seven Mile	36	383		1,170					383	1,170
Shunda Viewpoint	6	85		261					85	261
<b>Sibbald (KC, RA)</b>										
- Sibbald Lake	134	3,451		11,320						
- Dawson Cr Equestrian	17	67		221						
- Lusk Pass Backcountry	20	31		123						
- Pine Grove: A					799	2,338				
- Pine Grove: B					478	1,471				
- Stony Creek					751	2,328				
Total	<b>171</b>	<b>3,549</b>		<b>11,664</b>	<b>2,028</b>	<b>6,136</b>	<b>19,310</b>	<b>46,344</b>	<b>24,887</b>	<b>64,144</b>
Simonette River	25	ND		ND					ND	ND
Smoky River South	22	ND		ND					ND	ND
Snow Creek					736	2,876			736	2,876
South Fork					67	206			67	206
<b>St. Mary's (DM)</b>										
- Lower Campground	100	ND		ND						
- Upper Campground	30	178		549						
Total	<b>130</b>	<b>178</b>		<b>549</b>	<b>ND</b>	<b>ND</b>	<b>ND</b>	<b>ND</b>	<b>178</b>	<b>549</b>
Strachan	27	1,073		3,250					1,073	3,250
Sulphur Gates	11	192		558					192	558
Sulphur Lake	11	486		1,404	132	399	930	2,325	1,548	4,128
Swan Lake	16	878		2,635					878	2,635
Tay River	34	1,122		3,517					1,122	3,517
The Narrows	61	627		1,896			2,820	7,050	3,447	8,946
Thomson Creek	55	2,420		7,247					2,420	7,247
Travers Reservoir	20	ND		ND			ND	ND	ND	ND
Twin Lakes	49	649		2,006			2,430	6,075	3,079	8,081

**DM** Data Missing for one or more month(s)

**ND** No Data available

**KC** Kananaskis Country

**RA** Consolidation of Recreation Areas for reporting purposes.

**Note:** If overflow unit nights are reported, they are also included in the recreation area total for occupied campsite nights.



**Visitation Summary by Provincial Recreation Area - April 1, 2002 to October 31, 2002**

<b>Provincial Recreation Area - Campground, Group use area, or Day use area</b>	<b>Number of Campsites</b>	<b>Occupied Campsite Nights</b>	<b>Overflow Unit Nights</b>	<b>Campers</b>	<b>Group Unit Nights</b>	<b>Group Campers</b>	<b>Day Use Party Visits</b>	<b>Day Use Visitors</b>	<b>Total Parties</b>	<b>Total Visitors</b>
Waskahigan River	24	ND		ND					ND	ND
Waterton Reservoir	25	ND		ND			ND	ND	ND	ND
Watson Creek	38	ND		ND					ND	ND
Whitehorse Creek	26	ND		ND					ND	ND
Wildhay Group					ND	ND			ND	ND
Wildhorse (Kinky Lake) (DM)	33	784		2,262					784	2,262
Wolf Lake	65	ND		ND					ND	ND

**ND** No Data available

**DM** Data Missing for one or more month(s)

**Note:** If overflow unit nights are reported, they are also included in the recreation area total for occupied campsite nights.



**Summary of Historic Camping Use - 1993/94 To 2002/03  
(Occupied Campsite Nights)**

<b>Provincial Park - Campground</b>	1993/94	1994/95	1995/96	1996/97	1997/98	1998/99	1999/00	2000/01	2001/02	2002/03	<b>% Change From Last Year</b>
Aspen Beach											
- Lakeview	10,101	12,883	10,604	12,509	12,608	12,277	ND	10,629	12,373	12,846	3.8
- Brewer's Beach	14,227	14,151	14,160	15,443	15,826	15,065	ND	12,615	14,279	14,725	3.1
<b>Total</b>	<b>24,328</b>	<b>27,034</b>	<b>24,764</b>	<b>27,952</b>	<b>28,434</b>	<b>27,342</b>	<b>26,343<sup>1</sup></b>	<b>26,329<sup>2</sup></b>	<b>26,652</b>	<b>27,571</b>	3.4
Beauvais Lake	3,027	3,534	3,671	3,852	3,763	3,658	4,402	3,410	3,874	3,098	-20.0
Big Knife	1,458	1,197	1,416 (51)	1,598	1,299	1,427	1,551 (63)	1,579	1,865 (91)	1,618	-13.2
Blue Rock Wildland (KC)											
- Three Point Backcountry	130	124	93	0	0	ND	ND	ND	ND	ND	N/A
<b>Total</b>	<b>130</b>	<b>124</b>	<b>93</b>	<b>0</b>	<b>0</b>	<b>ND</b>	<b>ND</b>	<b>ND</b>	<b>ND</b>	<b>ND</b>	N/A
Bow Valley (KC)											
- Overflow camping		9	8		70						
- Willow Rock	4,767	3,913	4,538	4,577	4,599	5,426	4,287	3,359	2,321 <sup>5</sup>	4,277	N/A
- Bow Valley	8,137	9,024	8,503	9,968	8,978	11,028	9,851	8,719	7,182 <sup>5</sup>	19,684	N/A
- Jewel Bay Backcountry		161	0	171	669	ND	0	5 <sup>5</sup>	30 <sup>5</sup>	241	N/A
<b>Total</b>	<b>12,904</b>	<b>13,107</b>	<b>13,049</b>	<b>14,716</b>	<b>14,316</b>	<b>16,454</b>	<b>14,138</b>	<b>16,534<sup>3</sup></b>	<b>16,517<sup>4</sup></b>	<b>24,202</b>	46.5
Bow Valley Wildland (KC)											
- Quaitte Valley Backcountry	426	550	0	291	1,114	ND	ND	272	142 <sup>5</sup>	345	N/A
<b>Total</b>	<b>426</b>	<b>550</b>	<b>0</b>	<b>291</b>	<b>1,114</b>	<b>ND</b>	<b>ND</b>	<b>272</b>	<b>142<sup>5</sup></b>	<b>345</b>	N/A
Calling Lake	832 (7)	1,035 (8)	706 (18)	ND	ND	ND	194	ND	ND	ND	N/A
Carson-Pegasus	13,662 (122)	14,554	14,965 (199)	14,002	13,115 (35)	13,639	14,783 (68)	13,879 (80)	13,299	12,674 (49)	-4.7
Chain Lakes	2,140	2,831	2,825	3,664	3,321	3,301	2,733	3,246	2,758 <sup>5</sup>	3,296	N/A

<sup>1</sup> Reported camping estimated  
<sup>2</sup> Park total includes an estimate for June camping  
<sup>3</sup> Park total includes an estimate for August camping  
<sup>4</sup> Park total includes an estimate for June/July camping  
<sup>5</sup> Data Missing for one or more month(s)  
N/A Not Applicable  
ND No Data available  
(#) Overflow Unit Nights  
KC Kananaskis Country

**Note:** If overflow unit nights are reported, they are also included in the park total for occupied campsite nights.

**Summary of Historic Camping Use - 1993/94 To 2002/03  
(Occupied Campsite Nights)**

<b>Provincial Park - Campground</b>	1993/94	1994/95	1995/96	1996/97	1997/98	1998/99	1999/00	2000/01	2001/02	2002/03	<b>% Change From Last Year</b>
Cold Lake	2,574 (38)	2,357	2,432	2,014	2,293	2,946	3,225	2,602	3,207	3,856	20.2
Crimson Lake											
- Crimson Lake	7,838	8,939	8,644	8,988	9,215	9,808	8,849	8,816	9,888	9,897	0.1
- Twin Lakes	1,401	1,893	1,933	2,110	1,660	1,777	1,374	1,669	2,153	1,621	-24.7
<b>Total</b>	<b>9,239</b>	<b>10,832</b>	<b>10,577</b>	<b>11,098</b>	<b>10,875</b>	<b>11,585</b>	<b>10,223</b>	<b>10,485</b>	<b>12,041</b>	<b>11,518</b>	-4.3
Cross Lake	3,618 (14)	2,800 (28)	2,975	4,318	3,829	1,949	5,512	3,605	3,843 <sup>1</sup>	2,539 <sup>2</sup>	N/A
Cypress Hills											
- Overflow camping	765	1,388	979	1,413	599	776	448	384	211	49	N/A
- Elkwater	7,427	7,800	7,772	7,153	7,612	7,495	7,706	7,164	7,173	7,149	-0.3
- Beaver Creek	2,830	2,994	3,082	2,582	2,699	2,643	2,475	2,530	2,322	2,142	-7.8
- Ferguson Hill	1,917	2,625	2,860	3,388	2,700	2,930	2,436	2,221	1,964	2,063	5.0
- Lodgepole	2,100	2,444	2,185	1,920	1,743	1,875	1,754	1,683	1,291	1,523	18.0
- Firerock	4,406	4,793	5,622	5,461	5,424	5,826	4,587	4,266	4,791	4,337	-9.5
- Reesor Lake	2,348	2,625	2,575	2,558	2,527	2,378	2,200	2,064	1,829	1,797	-1.7
- Reesor Lake Dock	362	336	167	189	321	251	119	151	157	141	-10.2
- Spruce Coulee	241	343	471	471	434	404	354	366	303	316	4.3
- Nicholl Spring	175	187	222	208	153	154	138	192	184	10	-94.6
- Battle Creek	136	253	253	214	326	369	241	237	230	164	-28.7
- Upper Graburn	1	0	0	0	0	0	25	0	0	N/A	N/A
<b>Total</b>	<b>22,708</b>	<b>25,788</b>	<b>26,188</b>	<b>25,557</b>	<b>24,538</b>	<b>25,101</b>	<b>22,483</b>	<b>21,258</b>	<b>20,455</b>	<b>19,691</b>	-3.7
Dillberry Lake	2,945	2,782	2,943	2,665	3,931	2,322	1,484	79 <sup>2</sup>	1,396	735	-47.3
Dinosaur	4,053	6,447	7,592 (36)	8,277	8,516	9,487	9,495	9,736	9,809	9,607	-2.1
Don Getty Wildland (KC)											
- Big Elbow Backcountry	97	269	73	149	3	ND	ND	ND	ND	ND	N/A
<b>Total</b>	<b>97</b>	<b>269</b>	<b>73</b>	<b>149</b>	<b>3</b>	<b>ND</b>	<b>ND</b>	<b>ND</b>	<b>ND</b>	<b>ND</b>	<b>N/A</b>

**KC** Kananaskis Country

**N/A** Not Applicable

<sup>1</sup> Reported camping estimated

**ND** No Data available

**(#)** Overflow Unit Nights

<sup>2</sup> Data Missing for one or more month(s)

**Note:** If overflow unit nights are reported, they are also included in the park total for occupied campsite nights.

**Summary of Historic Camping Use - 1993/94 To 2002/03  
(Occupied Campsite Nights)**

<b>Provincial Park - Campground</b>	1993/94	1994/95	1995/96	1996/97	1997/98	1998/99	1999/00	2000/01	2001/02	2002/03	<b>% Change From Last Year</b>
Dry Island Buffalo Jump											
- Tolman East	984	746	801	766	584	715	811	1,439	1,460	1,365	-6.5
- Tolman West	358	236	202	273	106	162	386	562	614	683	11.2
<b>Total</b>	<b>1,342</b>	<b>982</b>	<b>1,003</b>	<b>1,039</b>	<b>690</b>	<b>877</b>	<b>1,197</b>	<b>2,001</b>	<b>2,074</b>	<b>2,048</b>	-1.3
Dunvegan	1,691	2,030	2,744	2,654	2,371	2,298	3,173	3,006	3,381	2,739	-19.0
Elbow-Sheep Wildland ( <b>KC</b> )											
- Romulus Backcountry	483	118	296	0	<b>ND</b>	<b>ND</b>	<b>ND</b>	<b>ND</b>	<b>ND</b>	<b>ND</b>	<b>N/A</b>
- Tombstone Backcountry	218	425	232	202	3	<b>ND</b>	<b>ND</b>	<b>ND</b>	<b>ND</b>	<b>ND</b>	<b>N/A</b>
<b>Total</b>	<b>701</b>	<b>543</b>	<b>528</b>	<b>202</b>	<b>3</b>	<b>ND</b>	<b>ND</b>	<b>ND</b>	<b>ND</b>	<b>ND</b>	<b>N/A</b>
Garner Lake	3,091	3,070	3,259	2,984	2,625	1,862	1,973	<b>ND</b>	890 <sup>2</sup>	1,673	<b>N/A</b>
Gooseberry Lake	1,236 (9)	948	1,189	987	1,345	1,463	1,353	1,172	1,435	1,354 <sup>1</sup>	-5.6
Gregoire Lake	5,156	5,798	5,417	6,380	6,316	6,566	9,212	7,798	9,423	7,301	-22.5
Hilliard's Bay	3,083 (9)	3,014	3,742	2,938	3,243	2,887	2,798	2,152	2,648	3,045	15.0
Jarvis Bay	13,660 (1,064)	13,126 (285)	12,979 (211)	12,943 (315)	12,370 (251)	12,020	12,718	12,643	14,037	14,309	1.9
Kinbrook Island	11,282 (153)	12,579	12,575	12,419	7,562	12,933	12,147	11,169	11,883 (117)	11,361	-4.4
Lesser Slave Lake	5,001 (3)	5,516 (10)	5,697 (14)	3,959	3,473 (15)	4,722	5,359	3,309 <sup>2</sup>	6,267 (4)	6,432	2.6
Little Bow	6,929	8,644	8,978	8,513	9,959	7,710	8,761	<b>ND</b>	<b>ND</b>	<b>ND</b>	<b>N/A</b>
Little Fish Lake	103	105	151	88	107	72	126	331	304	197	-35.2
Long Lake	12,267	12,874	12,437	12,423	11,860	14,157	14,648	13,018	14,634	14,709	0.5

**KC** Kananaskis Country

**N/A** Not Applicable

<sup>2</sup> Data Missing for one or more month(s)

**ND** No Data available

<sup>1</sup> Reported camping estimated

(#) Overflow Unit Nights

**Note:** If overflow unit nights are reported, they are also included in the park total for occupied campsite nights.

**Summary of Historic Camping Use - 1993/94 To 2002/03  
(Occupied Campsite Nights)**

<b>Provincial Park - Campground</b>	1993/94	1994/95	1995/96	1996/97	1997/98	1998/99	1999/00	2000/01	2001/02	2002/03	<b>% Change From Last Year</b>
Miquelon Lake	13,867	14,732 (12)	15,138 (21)	15,537 (26)	15,759 (8)	16,591	15,529	13,684	15,131	13,585	-10.2
Moonshine Lake	1,923	2,318	2,741	3,987	3,742	4,480	2,370	3,608	4,078 <sup>2</sup>	4,195	N/A
Moose Lake	753	1,084	1,047	1,241	1,680	1,161	1,161	<b>ND</b>	<b>ND</b>	1,488	N/A
Notikewin	55	76	100	33	25	58	119	97	100	99	-1.0
Park Lake	3,213	3,897	3,621	3,756	3,294	2,840	3,081	2,914	3,177 <sup>1</sup>	892	-71.9
Pembina River	4,421	5,463	5,282	5,763	6,357	6,200	6,319	2,062	5,340 <sup>1</sup>	3,647 <sup>2</sup>	N/A
<b>Peter Lougheed Park (KC)</b>											
- Overflow camping	806	183	223	229	112	415	93	508	61		N/A
- Canyon	2,053	2,287	2,606	2,710	2,605	2,626	2,200	2,380	1,243 <sup>2</sup>	2,019	N/A
- William Watson	628	685	792	634	613	433	730	765	528 <sup>2</sup>	421	N/A
- Elkwood	6,705	7,640	8,187	7,975	7,973	8,354	7,947	8,056	4,490 <sup>2</sup>	7,211	N/A
- Boulton Creek	7,777	8,477	9,078	7,948	8,303	8,773	8,108	7,727	4,329 <sup>2</sup>	7,036	N/A
- Lower Lake	4,113	5,337	5,625	5,641	5,594	6,114	5,291	5,386	3,968 <sup>2</sup>	2,955 <sup>2</sup>	N/A
- Mount Sarrail	945	1,087	1,242	1,308	1,213	1,445	1,100	1,317	610 <sup>2</sup>	1,165	N/A
- Interlakes	3,826	4,569	4,584	4,532	4,720	4,907	4,222	3,941	2,704 <sup>2</sup>	4,100	N/A
- Elbow Lake Backcountry	386	588	329	773	703	334	399	548	511	380	-25.6
- Point Backcountry	641	1,253	1,058	632	700	531	681	910	833	880	5.6
- Forks Backcountry	544	639	839	670	797	371	417	687	471	533	13.2
- Three Island Lake Backcountry	434	445	427	317	465	357	349	364	392	373	-4.8
- Turbine Canyon Backcountry	229	258	361	308	288	248	182	249	244	301	23.4
- Aster Backcountry		57	14	44	66	139	110	172	233	186	-20.2
<b>Total</b>	<b>29,087</b>	<b>33,505</b>	<b>35,365</b>	<b>33,721</b>	<b>34,152</b>	<b>35,047</b>	<b>31,829</b>	<b>33,010</b>	<b>31,190<sup>3</sup></b>	<b>27,560</b>	<b>N/A</b>

**KC** Kananaskis Country

**N/A** Not Applicable

<sup>1</sup> Reported camping estimated

<sup>3</sup> Park total includes an estimate for July camping

**ND** No Data available

<sup>2</sup> Data Missing for one or more month(s)

(#) Overflow Unit Nights

**Note:** If overflow unit nights are reported, they are also included in the park total for occupied campsite nights.

**Summary of Historic Camping Use - 1993/94 To 2002/03  
(Occupied Campsite Nights)**

<b>Provincial Park - Campground</b>	1993/94	1994/95	1995/96	1996/97	1997/98	1998/99	1999/00	2000/01	2001/02	2002/03	<b>% Change From Last Year</b>
<b>Pigeon Lake</b>											
- Overflow camping	310	273	305	164	1,060						
- Pigeon Lake	5,225	5,443	4,964	5,642	5,720	8,500	8,981	8,316	9,197	9,604	4.4
- Zeiner	4,193	4,432	4,283	4,440	4,517	5,763	5,528	5,136	4,365	5,090	16.6
<b>Total</b>	<b>9,728</b>	<b>10,148</b>	<b>9,552</b>	<b>10,246</b>	<b>11,297</b>	<b>14,263</b>	<b>14,509</b>	<b>13,452</b>	<b>13,562</b>	<b>14,694</b>	8.3
<b>Police Outpost</b>	1,680 (13)	2,266	2,907	2,952	3,040	2,618	2,477	1,765	1,572	<b>ND</b>	<b>N/A</b>
<b>Queen Elizabeth</b>	1,340	1,206	1,129 (8)	1,345	1,154	1,235	1,432 (5)	1,284	1,519	1,606	5.7
<b>Red Lodge</b>	4,739	5,210	5,716	5,916	6,150	6,438	5,887	6,627	7,161	4,312 <sup>2</sup>	<b>N/A</b>
<b>Rochon Sands</b>	2,254 (9)	1,942	1,596	2,002	2,107	2,361	2,654	2,502	2,599	2,532	-2.6
<b>Saskatoon Island</b>	5,014	5,159	5,904	5,550	6,273	7,184	4,127	6,684	6,846	6,407	-6.4
<b>Sheep River Valley (KC)</b>											
- Overflow camping	52	27	71	6	32	6					
- Sandy Mcnabb	2,411	2,497	3,028	2,779	2,732	2,244	<b>ND</b>	3,386	2,704	2,918	7.9
- Sandy Mcnabb Equestrian	784	969	778	794	962	655	<b>ND</b>	<b>ND</b>	1,025	717	-30.0
- Blue Rock	2,396	2,741	3,111	2,841	2,738	2,247	<b>ND</b>	3,035	3,026	2,782	-8.1
- Blue Rock Equestrian	447	502	740	476	590	348	<b>ND</b>	<b>ND</b>	623	366	-41.3
- Wolf Creek Backcountry	43	60	37	0	0	<b>ND</b>	<b>ND</b>	<b>ND</b>	<b>ND</b>	<b>ND</b>	<b>N/A</b>
<b>Total</b>	<b>6,133</b>	<b>6,796</b>	<b>7,765</b>	<b>6,896</b>	<b>7,054</b>	<b>5,500</b>	<b>8,076<sup>3</sup></b>	<b>6,421</b>	<b>7,378</b>	<b>6,783</b>	-8.1
<b>Sir Winston Churchill</b>	4,024 (7)	3,865 (6)	3,296	3,497	2,799	3,496	3,496	<b>ND</b>	<b>ND</b>	2,069	<b>N/A</b>
<b>Spray Valley (KC)</b>											
- Overflow camping	41	57	30	37	24				234	260	<b>N/A</b>
- Spray Lakes West	2,228	2,926	2,395	2,595	3,144	2,628	2,708	3,084	1,801 <sup>2</sup>	3,959	<b>N/A</b>
- Eau Claire	2,575	3,209	3,308	3,060	2,994	3,073	2,720	2,763	1,681 <sup>2</sup>	3,057	<b>N/A</b>
- Ribbon Falls Backcountry	223	492	0	272	1,018	<b>ND</b>	365	327	332	236	-28.9
- Ribbon Lake Backcountry	173	462	0	342	1,072	<b>ND</b>	365	355	370	337	-8.9
- Lillian Lake Backcountry	290	724	0	400	2,033	<b>ND</b>	460	552	556	840	51.1
<b>Total</b>	<b>5,530</b>	<b>7,870</b>	<b>5,733</b>	<b>6,706</b>	<b>10,285</b>	<b>2,628</b>	<b>3,898</b>	<b>7,081</b>	<b>7,000<sup>1</sup></b>	<b>8,689</b>	24.1

**KC** Kananaskis Country

**N/A** Not Applicable

<sup>1</sup> Park total includes an estimate for July camping

**ND** No Data

(#) Overflow Unit Nights

<sup>2</sup> Data Missing for one or more month(s)

<sup>3</sup>

Reported camping estimated

**Note:** If overflow unit nights are reported, they are also included in the park total for occupied campsite nights.

**Summary of Historic Camping Use - 1993/94 To 2002/03  
(Occupied Campsite Nights)**

<b>Provincial Park - Campground</b>	1993/94	1994/95	1995/96	1996/97	1997/98	1998/99	1999/00	2000/01	2001/02	2002/03	<b>% Change From Last Year</b>
Sundance									150 <sup>3</sup>	<b>ND</b>	<b>N/A</b>
Thunder Lake	6,285 (149)	6,775 (212)	6,490 (179)	6,343 (36)	5,493 (69)	5,753	5,710 (24)	5,684	5,797 <sup>1</sup>	5,797 <sup>1</sup>	<b>N/A</b>
Tillebrook	5,221	5,883 (84)	5,478 (65)	4,961 (40)	5,961 (104)	5,268	4,304	5,914	7,674	5,998	-21.8
Vermilion	2,102	2,171	2,400	2,467	3,689	3,650	2,631	2,322	2,449	2,071	-15.4
Wabamun Lake	9,587	9,195	7,407	7,850 (30)	7,456	10,253	9,375	8,343	7,621 <sup>2</sup>	8,610	-88.7
Whitney Lakes											
- Ross Lake	1,716	1,566	1,742	2,139	3,177	2,153	1,434	2,544	2,883	1,687	-41.5
- Whitney Lake	354	422	470	430	466	404	242	37 <sup>3</sup>	322	234	-27.3
<b>Total</b>	<b>2,070</b>	<b>1,988</b>	<b>2,212</b>	<b>2,569</b>	<b>3,643</b>	<b>2,557</b>	<b>1,676</b>	<b>2,581</b>	<b>3,205</b>	<b>1,921</b>	<b>-40.1</b>
William A. Switzer											
- Overflow camping				20							
- Jarvis Lake	1,423	1,495	1,288	1,564	1,599	1,424	1,172	790	802 <sup>3</sup>	976	<b>N/A</b>
- Cache	294	359	340	376	536	559	404	256	275 <sup>3</sup>	246	<b>N/A</b>
- Graveyard/Halfway	368	471	481	391	410	437	321	257	288 <sup>3</sup>	319	<b>N/A</b>
- Gregg Lake	2,583	3,504	3,244	3,664	3,843	3,685	4,419	3,520	3,952 <sup>3</sup>	4,696	<b>N/A</b>
<b>Total</b>	<b>4,668</b>	<b>5,829</b>	<b>5,353</b>	<b>6,015</b>	<b>6,388</b>	<b>6,105</b>	<b>6,316</b>	<b>4,823</b>	<b>5,317<sup>3</sup></b>	<b>6,237</b>	<b>N/A</b>
Williamson	1,962	1,674	1,566 (10)	1,509	1,609	1,736	1,381	881	953	1,383	45.1
Willow Creek	2,492	2,663	395	2,159	2,026	1,871	2,166 (15)	1,915	1,800	1,637	-9.1
Winagami Lake	1,767	1,561	1,915	1,833	1,708	2,043	1,855	1,621 (20)	2,224 (24)	2,184	-1.8
Woolford	110	98	173	201	203	265	298	262	247 <sup>3</sup>	130 <sup>3</sup>	<b>N/A</b>
Writing-On-Stone	5,511	6,290	6,187	5,913	6,004 (5)	5,324 (111)	6,117 (120)	6,265 (270)	5,593 (170)	4,735 (67)	-15.3
Wyndham-Carseland	7,098	8,546	7,893	9,157	8,587	8,256 <sup>1</sup>	8,256 <sup>1</sup>	<b>ND</b>	<b>ND</b>	3,580 <sup>3</sup>	<b>N/A</b>
Young's Point	2,698 (29)	2,882 (19)	2,770 (68)	2,763 (2)	3,223	2,637	2,697	1,640	2,054	3,193	55.5

**ND** No Data

<sup>1</sup> Reported camping estimated

**N/A** Not Applicable

<sup>2</sup> Park total includes an estimate for July/August camping

(#) Overflow Unit Nig

<sup>3</sup> Data Missing for one or more month(s)

**Note:** If overflow unit nights are reported, they are also included in the park total for occupied campsite nights.



**Summary of Historic Camping Use - 1993/94 To 2002/03  
(Occupied Campsite Nights)**

<b>Provincial Recreation Area - Campground</b>	1993/94	1994/95	1995/96	1996/97	1997/98	1998/99	1999/00	2000/01	2001/02	2002/03	<b>% Change From Last Year</b>
Alymer					80	90	29	63	66	96	45.5
Beaverdam					183	332	145	147	328	199	-39.3
Beaver Lake	2,182	2,689	3,188	2,536	2,530	2,625	2,625	3,732	<b>ND</b>	3,427	<b>N/A</b>
Big Berland					280	340	268	217	274	380	38.7
Blackstone					114	220	130	119	175	154	-12.0
Bleriot Ferry	609	671	829	618	462	537	769	1,753	1,565	1,945	24.3
<b>Bow Corridor (KC, RA)</b>											
- Lac Des Arcs	1,302	1,343	1,444	1,306	1,204	1,384	1,350	900	651 <sup>1</sup>	1,177	<b>N/A</b>
- Three Sisters	3,138	3,204	3,214	3,223	3,553	3,483	3,238	1,897	1,556 <sup>1</sup>	2,572	<b>N/A</b>
- Bow River	1,671	1,797	1,825	1,873	1,912	2,245	1,578	1,657	1,221 <sup>1</sup>	2,519	<b>N/A</b>
<b>Total</b>	<b>6,111</b>	<b>6,344</b>	<b>6,483</b>	<b>6,402</b>	<b>6,669</b>	<b>7,112</b>	<b>6,166</b>	<b>4,454</b>	<b>5,827<sup>3</sup></b>	<b>6,268</b>	7.6
<b>Brazeau Reservoir</b>											
- Overflow camping						209	353	374	513	387	<b>N/A</b>
- Reservoir						1,074	1,027	1,071	1,489	1,491	0.1
- West Canal						861	895	793	1,043	876	-16.0
- East Canal						178	78	57	63	85	34.9
<b>Total</b>						<b>2,322</b>	<b>2,353</b>	<b>2,295</b>	<b>3,108</b>	<b>2,839</b>	-8.7
Brazeau River					219	253	180	137	167	213	27.5
Brown Creek					274	587	258	226	282	173	-38.7
Buck Lake	927	1,220	1,293	847	758	1,118	832	985	1,323	750 <sup>2</sup>	<b>N/A</b>
Buffalo Lake	910	732	831	1,145	975	1,335	1,210	1,044	1,001	1,376	37.5
Calhoun Bay	1,996	1,683	2,397	1,314	951	1,351	1,276	1,423	1,603	975 <sup>2</sup>	<b>N/A</b>
Cartier Creek						69	148	161	73	105	43.8
Castle River	354	479	20	6	252	220	274	198	443	<b>ND</b>	<b>N/A</b>
Chambers Creek					1,251	1,697	1,268	1,080	1,222	1,048	-14.2
Chinook									4,555	4,618	1.4

**ND** No Data available

**KC** Kananaskis Country

<sup>1</sup> Data Missing for one or more month(s)

<sup>3</sup> Park total includes an estimate for June/July camping

**N/A** Not Applicable

**RA** Consolidation of recreation areas for reporting purposes.

<sup>2</sup> Camping estimated for one or more month(s)

**Note:** If overflow unit nights are reported, they are also included in the recreation area total for occupied campsite nights.

**Summary of Historic Camping Use - 1993/94 To 2002/03  
(Occupied Campsite Nights)**

<b>Provincial Recreation Area - Campground</b>	1993/94	1994/95	1995/96	1996/97	1997/98	1998/99	1999/00	2000/01	2001/02	2002/03	<b>% Change From Last Year</b>
Coal Lake North	233	126	110	133	136	94	86	83	234	59	-74.8
Coal Lake South	482	269	365	385	215	190	304	202	269	196	-27.1
Coalspur									59 <sup>1</sup>	<b>ND</b>	<b>N/A</b>
Crane Lake East	984	1,133	1,160	1,120	1,245	1,128	1,128	<b>ND</b>	<b>ND</b>	1,300 <sup>2</sup>	<b>N/A</b>
Crane Lake West	1,161	1,217	1,250	1,340	1,290	1,252	1,252	<b>ND</b>	<b>ND</b>	1,958 <sup>2</sup>	<b>N/A</b>
Crescent Falls					1,383	1,773	1,344	1,462	1,661	1,833	10.4
Dickson Dam - Dickson Point				663	732	<b>N/A</b>	590	658	863	470 <sup>1</sup>	<b>N/A</b>
Dickson Dam - North Dyke				507	546	<b>N/A</b>	415	503	1,059	449 <sup>1</sup>	<b>N/A</b>
Dickson Dam - South Dyke				567	615	<b>N/A</b>	384	464	685	307 <sup>1</sup>	<b>N/A</b>
Dry Haven					402	450	278	338	470	362	-23.0
Dutch Creek					1,540	1,822	1,798	1,860	1,784	1,867	4.7
<b>Elbow River Valley (KC, RA)</b>											
- Overflow camping	217	179	211	210	281	103					
- Gooseberry	3,868	4,180	3,963	4,136	4,636	4,170	<b>ND</b>	4,025	4,623	3,227 <sup>1</sup>	<b>N/A</b>
- McLean Creek	10,206	11,102	9,553	10,686	11,308	7,822	<b>ND</b>	9,196	10,316	7,857 <sup>1</sup>	<b>N/A</b>
- North Fork	871	935	878	914	712	672	<b>ND</b>	639	761	841	10.5
- Fisher Creek								179	151	237	57.0
-Mesa Butte Equestrian	376	450	432	365	364	405	<b>ND</b>	<b>ND</b>	333	363	9.0
- Paddy's Flat	4,584	5,329	4,273	4,664	5,293	4,259	<b>ND</b>	4,695	4,783	3,480	-27.2
- Beaver Flats	2,405	2,800	2,384	2,634	2,828	2,315	<b>ND</b>	2,433	2,718	1,788	-34.2
- Little Elbow	5,090	5,628	5,618	5,242	5,806	4,357	<b>ND</b>	4,885	5,160	3,286	-36.3
- Wildhorse Backcountry	28	51	1	4	0	<b>ND</b>	<b>ND</b>	<b>ND</b>	<b>ND</b>	<b>ND</b>	<b>N/A</b>
<b>Total</b>	<b>27,645</b>	<b>30,654</b>	<b>27,313</b>	<b>28,885</b>	<b>31,228</b>	<b>24,103</b>	<b>27,655<sup>3</sup></b>	<b>26,052</b>	<b>28,845</b>	<b>21,079</b>	<b>N/A</b>
Elk Creek						219	251	201	219	181	-17.4
Elk River					122	141	89	336	356	33	-90.7
English Bay	1,627	1,615	1,616	1,378	1,035	1,454	1,454	<b>ND</b>	<b>ND</b>	<b>ND</b>	<b>N/A</b>
Engstrom Lake			267	351	106	33	169	<b>ND</b>	287	303	5.6

**KC** Kananaskis Country

**ND** No Data available

(#) Overflow Unit Nights

<sup>2</sup> Camping estimated for one or more month(s)

**RA** Consolidation of recreation areas for reporting purposes.

**N/A** Not Applicable

<sup>1</sup> Data Missing for one or more month(s)

<sup>3</sup> Reported camping estimated

**Note:** If overflow unit nights are reported, they are also included in the recreation area total for occupied campsite nights.

**Summary of Historic Camping Use - 1993/94 To 2002/03  
(Occupied Campsite Nights)**

<b>Provincial Recreation Area - Campground</b>	1993/94	1994/95	1995/96	1996/97	1997/98	1998/99	1999/00	2000/01	2001/02	2002/03	<b>% Change From Last Year</b>
<b>Evan-Thomas (KC)</b>											
- Overflow camping		1		4							
- Mount Kidd RV	26,350	35,763	26,864	25,292	24,057	20,894	27,142	25,396	24,297	20,606	-15.2
- Sundance Lodge	1,015	1,319	1,742	1,926	ND	ND	ND	ND	ND	ND	N/A
<b>Total</b>	<b>29,940</b>	<b>40,293</b>	<b>31,914</b>	<b>30,282</b>	<b>27,051</b>	<b>23,967</b>	<b>29,862</b>	<b>25,396</b>	<b>24,297<sup>1</sup></b>	<b>20,606</b>	<b>-15.2</b>
Fairfax Lake						948	883	ND	303 <sup>2</sup>	868	N/A
Fallen Timber	276	244	303	303	202	430	473	417	500	581	16.2
Fickle Lake									723 <sup>2</sup>	ND	N/A
Figure Eight Lake	700 (5)	895	988 (8)	1,020 (26)	1,110 (51)	943	756	847	1,007	999	-0.8
Fish Lake					4,144	5,276	4,692	4,881	6,024	5,633	-6.5
Fork Lake	1,141	1,419	1,327	1,303	1,574	1,353	1,353	942	ND	ND	N/A
Franchere Bay	4,695	3,998	4,422	4,249	4,594	4,392	4,392	ND	ND	2,250 <sup>3</sup>	N/A
French Bay	416	500	436	643	ND	604	533	174	438	456	4.1
Ghost Reservoir	806	779	ND	ND	ND	ND	ND	ND	ND	ND	N/A
Goldeye Lake					1,939	2,266	1,918	1,571	1,857	1,592	-14.3
Hangingstone	1,150	1,235	1,043	898	257	123	882	ND	1,449	913	-37.0
Hanmore Lake	1,035	1,246	811	926	888	1,333	529	199	ND	1,475	N/A
Harlech					631	715	468	467	579	453	-21.8
Heart River Dam	66	67	83	69	127	50	66	6	2	ND	N/A
<b>Highwood/Cataract (KC, RA)</b>											
- Overflow camping	279	322	163	270	63						
- Strawberry Equestrian	1,615	1,075	1,420	305	329	240	ND	197 <sup>2</sup>	305 <sup>2</sup>	89	N/A
- Etherington Creek	1,321	1,697	1,951	1,571	1,498	1,112	ND	1,694	1,553	1,121	-27.8
- Etherington Creek Equestrian	167	187	39	115	132	97	ND	ND	127	63	-50.4
- Cataract	1,490	1,618	648	1,631	1,421	1,106	ND	1,497	1,631	1,728	5.9
- Greenford	569	604	648	520	498	257	ND	501	404	370	-8.4
<b>Total</b>	<b>5,441</b>	<b>5,503</b>	<b>4,869</b>	<b>4,412</b>	<b>3,941</b>	<b>2,812</b>	<b>4,307<sup>4</sup></b>	<b>3,889</b>	<b>4,020</b>	<b>3,371</b>	<b>N/A</b>

**ND** No Data available

**KC** Kananaskis Country

<sup>1</sup> Park total includes an estimate for July/August camping

<sup>3</sup> Camping estimated for one or more month(s)

**N/A** Not Applicable

**RA** Consolidation of recreation areas for reporting purposes.

<sup>2</sup> Data Missing for one or more month(s)

<sup>4</sup> Reported camping estimated

**Note:** If overflow unit nights are reported, they are also included in the recreation area total for occupied campsite nights.

**Summary of Historic Camping Use - 1993/94 To 2002/03  
(Occupied Campsite Nights)**

<b>Provincial Recreation Area - Campground</b>	1993/94	1994/95	1995/96	1996/97	1997/98	1998/99	1999/00	2000/01	2001/02	2002/03	<b>% Change From Last Year</b>
Horburg					241	289	221	210	308	230	-25.3
Hornbeck Creek	1,246	2,128	1,609	1,378	ND	ND	ND	568	ND	ND	N/A
Indian Graves	646	668	538	476	450	425	531	ND	ND	ND	N/A
Island Lake	624	473	500	719	917	1,121	113	639	535	606	13.3
Jackfish Lake					346	518	342	259	293	235	-19.8
James River Bridge	86	102	100	87	93	119	160	131	151	155	2.6
James Wilson						257	307	322	262	251	-4.2
Kehiwin	2,116	1,769	1,857	1,387	1,534	1,733	1,733	ND	241	1,236	412.9
Kootenay Plains					1,811	2,150	1,587	1,542	1,547	1,574	1.7
Lakeland											
- Overflow camping	10										
- Pinehurst Lake	3,831	3,666	3,526	3,219	2,893	3,427	1,948	2,760	3,359	2,655	-21.0
- Touchwood Lake	3,532	3,733	4,200	3,730	2,946	2,452	857	1,924	2,071	2,124	2.6
- Seibert Lake	658	712	593	725	235	1,003	114	877	137 <sup>1</sup>	770	N/A
- Ironwood Lake	548	452	518	352	309	436	162	181	171	165	-3.5
<b>Total</b>	<b>8,579</b>	<b>8,563</b>	<b>8,837</b>	<b>8,026</b>	<b>6,383</b>	<b>3,455</b>	<b>7,053</b>	<b>5,742</b>	<b>5,738</b>	<b>5,714</b>	<b>-0.4</b>
Lambert Creek									100 <sup>1</sup>	ND	N/A
Little Bow Reservoir	373	725	551	889	741	406	662	ND	ND	ND	N/A
Little Sundance Creek									80 <sup>1</sup>	ND	N/A
Livingstone Falls					905	1,056	916	921	1,005	939	-6.6
Lovett River						241	209	ND	61 <sup>1</sup>	179	N/A
Lundbreck Falls	3,492	3,889	4,414	4,506	4,418	4,257	4,797	4,051	4,063	3,518	-13.4
Maqua Lake			221	198	86	182	196	ND	278	265	-4.7

**ND** No Data available

<sup>1</sup> Data Missing for one or more month(s)

**N/A** Not Applicable

**Note:** If overflow unit nights are reported, they are also included in the recreation area total for occupied campsite nights.

**Summary of Historic Camping Use - 1993/94 To 2002/03  
(Occupied Campsite Nights)**

<b>Provincial Recreation Area - Campground</b>	1993/94	1994/95	1995/96	1996/97	1997/98	1998/99	1999/00	2000/01	2001/02	2002/03	<b>% Change From Last Year</b>
Maycroft	62	110	200	263	340	130	88	95	6 <sup>1</sup>	<b>ND</b>	<b>N/A</b>
McLeod River									161 <sup>1</sup>	<b>ND</b>	<b>N/A</b>
Medicine Lake			2,681	2,227	1,935	2,278	1,601	1,764	1,994	1,585	-20.5
Minnie Lake	264	88	147	173	222	106	147	<b>ND</b>	117	110	-6.0
Mitchell Lake						42	58	66	146	132	-9.6
North Buck Lake	3,881	3,753	3,551	3,686	3,707	4,225	3,007	3,007	3,634	3,497	-3.8
North Ram River					464	545	296	484	465	346	-25.6
Old Man River	2,310	1,649	1,297	2,140	2,019	1,906	1,909	2,038	2,082	1,341	-35.6
Old Man River Dam											
- Cottonwood	2,624	3,258	381	1,692	1,990	2,188	2,183	2,130	1,819	1,787	-1.8
- Chinook RV	203	379	478	541	525	452	740	280	242	222	-8.3
- Island View	664	1,158	641	565	553	413	271	250	28	40	42.9
- Windy Point					126	171	137	132	142	183	28.9
<b>Total</b>	<b>3,491</b>	<b>4,795</b>	<b>1,500</b>	<b>2,798</b>	<b>3,194</b>	<b>3,224</b>	<b>3,331</b>	<b>2,792</b>	<b>2,231</b>	<b>2,232</b>	<b>0.0</b>
Oldman River North					303	357	317	418	338	260	-23.1
Payne	1,818	1,388	1,027	2,243	2,733	1,842	1,898	1,879	2,674	<b>ND</b>	<b>N/A</b>
Pembina Forks						296	318	<b>ND</b>	135 <sup>1</sup>	330	<b>N/A</b>
Peppers Lake						1,260	1,194	842	794	797	0.4
Phyllis Lake						467	680	584	619	1,021	64.9
Pierre Grey's Lakes					2,836	3,274	2,712	2,163	2,353	3,565	51.5
Prairie Creek						1,489	1,701	1,704	1,773	1,446	-18.4
Racehorse					917	1,086	1,224	1,155	1,149	1,119	-2.6

**ND** No Data available

<sup>1</sup> Data Missing for one or more month(s)

**N/A** Not Applicable

**Note:** If overflow unit nights are reported, they are also included in the recreation area total for occupied campsite nights.

**Summary of Historic Camping Use - 1993/94 To 2002/03  
(Occupied Campsite Nights)**

<b>Provincial Recreation Area - Campground</b>	1993/94	1994/95	1995/96	1996/97	1997/98	1998/99	1999/00	2000/01	2001/02	2002/03	<b>% Change From Last Year</b>
Ram Falls						1,789	1,318	989	1,337	1,209	-9.6
Raven	164	144	172	162	126	110	142	84	121	47 <sup>1</sup>	N/A
Red Deer River						432	836	771	381	225	-40.9
Rock Lake					1,282	1,594	1,241	1,013	1,244 <sup>1</sup>	1,077	N/A
Saunders					196	178	141	116	127	161	26.8
Seven Mile						422	379	329	389	383	-1.5
Shunda Viewpoint					190	246	157	82	146	85	-41.8
<b>Sibbald (KC, RA)</b>											
- Overflow camping		16			46	33					
- Sibbald Lake	3,608	3,976	4,938	4,847	4,059	4,341	4,235	2,978	1,964 <sup>4</sup>	3,451	N/A
- Dawson Cr. Equestrian	66	61	77	88	92	74	93	81	60 <sup>4</sup>	67	N/A
- Lusk Pass Backcountry				107	784	ND	ND	31	33 <sup>4</sup>	31	N/A
<b>Total</b>	<b>3,674</b>	<b>4,053</b>	<b>5,015</b>	<b>5,042</b>	<b>4,981</b>	<b>4,448</b>	<b>4,328</b>	<b>3,090</b>	<b>3,947<sup>2</sup></b>	<b>3,549</b>	-10.1
Simonette River					48	ND	48	ND	ND	ND	N/A
Smoky River South					1,043	ND	605	628	ND	ND	N/A
St. Mary's	1,799	1,955	2,561	1,477	1,022	89	236	79 <sup>1</sup>	808 <sup>1</sup>	178 <sup>1</sup>	N/A
Strachan						976	698	749	929	1,073	15.5
Sulphur Gates						200	161	140	ND	192	N/A

**ND** No Data available

**KC** Kananaskis Country

<sup>1</sup> Data Missing for one or more month(s)

**N/A** Not Applicable

**RA** Consolidation of recreation areas for reporting purposes.

<sup>2</sup> Park total includes an estimate for June/July camping

**Note:** If overflow unit nights are reported, they are also included in the recreation area total for occupied campsite nights.

**Summary of Historic Camping Use - 1993/94 To 2002/03  
(Occupied Campsite Nights)**

<b>Provincial Recreation Area - Campground</b>	1993/94	1994/95	1995/96	1996/97	1997/98	1998/99	1999/00	2000/01	2001/02	2002/03	<b>% Change From Last Year</b>
Sulphur Lake							419	369	442	486	10.0
Swan Lake						760	748	847	1,072	878	-18.1
Tay River	780	474	448	444	450	429	632	514	703	1,122	59.6
The Narrows	1,372	985	702	625	616	590	831	765	834	627	-24.8
Thompson Creek					2,851	2,710	2,055	2,300	2,575	2,420	-6.0
Travers Reservoir	265	624	485	524	498	557	538	<b>ND</b>	<b>ND</b>	<b>ND</b>	<b>N/A</b>
Twin Lakes	543	551	591	623	550	572	1,028	744	743	649	-12.7
Waskahigan River					378	<b>ND</b>	378	6	<b>ND</b>	<b>ND</b>	<b>N/A</b>
Waterton Reservoir	37	103	903	99	88	95	22	337	<b>ND</b>	<b>ND</b>	<b>N/A</b>
Watson Creek									306 <sup>1</sup>	<b>ND</b>	<b>N/A</b>
Whitehorse Creek									640 <sup>1</sup>	<b>ND</b>	<b>N/A</b>
Wildhorse (Kinky Lake)					981	904	212	136	788 <sup>1</sup>	784 <sup>1</sup>	<b>N/A</b>
Wolf Lake			2,217	1,930	1,458	1,868	1,868	<b>ND</b>	<b>ND</b>	<b>ND</b>	<b>N/A</b>

**ND** No Data available

<sup>1</sup> Data Missing for one or more month(s)

**N/A** Not Applicable

**Note:** If overflow unit nights are reported, they are also included in the recreation area total for occupied campsite nights.

**Summary of Historic Group Camping Use - 1993/94 To 2002/03  
(Group Unit Nights)**

<b>Provincial Park - Group Use Area</b>	1993/94	1994/95	1995/96	1996/97	1997/98	1998/99	1999/00	2000/01	2001/02	2002/03	<b>% Change From Last Year</b>
Aspen Beach											
- Aspen Beach: A	245	250	341	375	513	ND	ND	251 <sup>2</sup>	377	314	-16.7
- Aspen Beach: B	139	253	282	535	427	ND	ND	233 <sup>2</sup>	272	227	-16.5
- Aspen Beach: C			209	461	245	ND	ND	260 <sup>2</sup>	240	292	21.7
- Aspen Beach: D							ND	120 <sup>2</sup>	141	112	-20.6
- Aspen Beach: E							ND	125 <sup>2</sup>	209	199	-4.8
- Aspen Beach: F							ND	175 <sup>2</sup>	189	167	-11.6
<b>Total</b>	<b>384</b>	<b>503</b>	<b>832</b>	<b>1,368</b>	<b>1,185</b>	<b>ND</b>	<b>774<sup>1</sup></b>	<b>1,164<sup>2</sup></b>	<b>1,428</b>	<b>1,311</b>	<b>-8.2</b>
Beauvais Lake	553	420	441	35	473	590	ND	ND	202	191	-5.4
Bow Valley (KC)											
- Elk Flats										317	N/A
- Canoe Meadows	332	327	282	122	ND	ND	82	451	316 <sup>2</sup>	1,700	N/A
- Porcupine	414	391	55	277	ND	ND	68	406	291 <sup>2</sup>	759	N/A
- Grouse	142	755	259	295	ND	ND	71	451	272 <sup>2</sup>	691	N/A
- Old Church Camp: Owl	41	463	10,659	230	ND	ND	76	584	431 <sup>2</sup>	673	N/A
<b>Total</b>	<b>929</b>	<b>1,936</b>	<b>11,255</b>	<b>924</b>	<b>ND</b>	<b>ND</b>	<b>297</b>	<b>1,892</b>	<b>1,310</b>	<b>4,140</b>	<b>N/A</b>
Carson-Pegasus	699	779	565	645	590	897	675	810	649	441	-32.0
Chain Lakes	436	516	461	1,111	545	508	482	373	456 <sup>2</sup>	668	N/A
Cold Lake	171	202	140	194	107	186	56	ND	ND	ND	N/A
Crimson Lake											
- Crimson Lake				392	229	310	294	242	290	283	-2.4
- Twin Lakes				653	559	648	625	501	621	578	-6.9
<b>Total</b>	<b>658</b>	<b>508</b>	<b>719</b>	<b>1,045</b>	<b>788</b>	<b>958</b>	<b>919</b>	<b>743</b>	<b>911</b>	<b>861</b>	<b>-5.5</b>
Cross Lake	440	397	371	258	354	232	597	444	ND	ND	N/A
Cypress Hills											
- Hwy. #41	459	352	322	188	163	109	129	180	170 <sup>2</sup>	ND	N/A
- Main	1,270	1,221	1,246	736	382	411	357	180	16 <sup>2</sup>	ND	N/A
- Willow Creek Equestrian	401	359	622	283	432	280	226	210	130 <sup>2</sup>	4 <sup>2</sup>	N/A
- Old Girl Guide					400	650	241	440	216 <sup>2</sup>	10 <sup>2</sup>	N/A
<b>Total</b>	<b>2,130</b>	<b>1,932</b>	<b>2,190</b>	<b>1,207</b>	<b>1,377</b>	<b>1,450</b>	<b>953</b>	<b>1,010</b>	<b>532</b>	<b>14</b>	<b>N/A</b>
Dillberry Lake	214	133	23	22	39	10	2	ND	ND	ND	N/A

ND No Data available  
 KC Kananaskis Country  
<sup>2</sup> Data Missing for one or more month(s)

N/A Not Applicable  
<sup>1</sup> Reported group camping estimated



**Summary of Historic Group Camping Use - 1993/94 To 2002/03  
(Group Unit Nights)**

<b>Provincial Park - Group Use Area</b>	1993/94	1994/95	1995/96	1996/97	1997/98	1998/99	1999/00	2000/01	2001/02	2002/03	<b>% Change From Last Year</b>
Dinosaur		259	373	699	492	429	467	607	567	542	-4.4
Gooseberry Lake	285	179	231	118	348	175	132	166	106	ND	N/A
Gregoire Lake	169	296	227	179	236	ND	289	ND	30 <sup>1</sup>	524	N/A
Hilliard's Bay											
- Area: A	272	121	398	315	357	297	455	377	254	455	79.1
- Area: B	79	75	48	125	76	137	179	64	169	65	-61.5
- Area: C	108	181	153	174	142	124	132	215	325	265	-18.5
<b>Total</b>	<b>459</b>	<b>377</b>	<b>599</b>	<b>614</b>	<b>575</b>	<b>558</b>	<b>766</b>	<b>656</b>	<b>748</b>	<b>785</b>	4.9
Jarvis Bay											
- Area: A										245	N/A
- Area: B										484	N/A
<b>Total</b>										<b>729</b>	<b>N/A</b>
Kinbrook Island						8	ND	220	314	365	16.2
Lesser Slave Lake											
- Lily Creek	307	265	437	352	198	249	287	344	272	344	26.5
- Marten River Youth Camp	347	307	408	301	176	576	512	273	317	451	42.3
- Golf Course Group Area	46	60	0	0	20	99	20	40	ND	ND	N/A
<b>Total</b>	<b>700</b>	<b>632</b>	<b>845</b>	<b>653</b>	<b>394</b>	<b>924</b>	<b>819</b>	<b>657</b>	<b>589</b>	<b>795</b>	35.0
Little Bow		180	133	418	475	322	ND	ND	ND	ND	N/A
Long Lake											
- Long Lake: A	435	404	488	475	541	470	464	463	413	332	-19.6
- Long Lake: B		144	197	281	188	270	250	268	327	355	8.6
<b>Total</b>	<b>435</b>	<b>548</b>	<b>685</b>	<b>756</b>	<b>729</b>	<b>740</b>	<b>714</b>	<b>731</b>	<b>740</b>	<b>687</b>	-7.2

ND No Data available  
<sup>1</sup> Data Missing for one or more month(s)

N/A Not Applicable

**Summary of Historic Group Camping Use - 1993/94 To 2002/03  
(Group Unit Nights)**

<b>Provincial Park - Group Use Area</b>	1993/94	1994/95	1995/96	1996/97	1997/98	1998/99	1999/00	2000/01	2001/02	2002/03	<b>% Change From Last Year</b>
<b>Miquelon Lake</b>											
- Miquelon Lake: 1	484	540	579	668	534	448	331	302	472	238	-49.6
- Miquelon Lake: 2	168	160	122	184	186	122	138	143	70	195	178.6
- Miquelon Lake: 3	135	158	157	126	138	92	124	142	174	108	-37.9
- Miquelon Lake: 4	156	204	135	196	226	196	196	85	169	112	-33.7
- Miquelon Lake: 5	157	188	241	266	262	82	70	172	178	206	15.7
- Miquelon Lake: 6	788	651	817	731	1,632	863	640	520	633	548	-13.4
- Miquelon Lake: 7	339	345	542	394	288	259	328	361	385	417	8.3
<b>Total</b>	<b>2,227</b>	<b>2,246</b>	<b>2,593</b>	<b>2565</b>	<b>3,266</b>	<b>2,062</b>	<b>1,827</b>	<b>1,725</b>	<b>2,081</b>	<b>1,824</b>	-12.3
Moonshine Lake	405	224	201	180	284	62	ND	98 <sup>1</sup>	199	270	35.7
Moose Lake	36	75	51	47	80	ND	ND	ND	ND	ND	N/A
<b>Park Lake</b>											
- Park Lake: A	330	342	331	235	301	71	351	346	ND	162 <sup>1</sup>	N/A
- Park Lake: B	272	182	243	174	436	34	112	223	ND	130 <sup>1</sup>	N/A
<b>Total</b>	<b>602</b>	<b>524</b>	<b>574</b>	<b>409</b>	<b>737</b>	<b>105</b>	<b>463</b>	<b>569</b>	<b>ND</b>	<b>292</b>	N/A
Pembina River	381	399	492	515	389	351	363	128	234	159 <sup>1</sup>	N/A
<b>Peter Lougheed Park (KC)</b>											
- Lower Lake	1,047	826	341	355	1,069	1,187	1,188	1,061	579 <sup>1</sup>	895	N/A
- Pocaterra	859	550	779	976	618	620	731	516	364 <sup>1</sup>	580	N/A
<b>Total</b>	<b>1,906</b>	<b>1,376</b>	<b>1,120</b>	<b>1,331</b>	<b>1,687</b>	<b>1,807</b>	<b>1,919</b>	<b>1,577</b>	<b>943</b>	<b>1,475</b>	N/A
<b>Pigeon Lake</b>											
- Pigeon Lake: A	310	313	462	273	271	471	395	387	N/A	160 <sup>1</sup>	N/A
- Pigeon Lake: B	455	272	211	476	238	324	332	247	N/A	ND	N/A
- Pigeon Lake: C	315	346	311	288	386	403	425	354	N/A	ND	N/A
- Pigeon Lake: D	413	306	315	255	358	218	218	341	N/A	ND	N/A
<b>Total</b>	<b>1,493</b>	<b>1,237</b>	<b>1,299</b>	<b>1,292</b>	<b>1,253</b>	<b>1,416</b>	<b>1,370</b>	<b>1,329</b>	<b>1,219<sup>2</sup></b>	<b>160</b>	N/A
Queen Elizabeth				59	228	ND	188	269	202	182	-9.9

ND No Data available

KC Kananaskis Country

<sup>2</sup> Individual group area camping use reported in park total only.

N/A Not Applicable

<sup>1</sup> Data Missing for one or more month(s)

**Summary of Historic Group Camping Use - 1993/94 To 2002/03  
(Group Unit Nights)**

<b>Provincial Park - Group Use Area</b>	1993/94	1994/95	1995/96	1996/97	1997/98	1998/99	1999/00	2000/01	2001/02	2002/03	<b>% Change From Last Year</b>
Rochon Sands	229	198	185	264	217	ND	189	343	213	225 <sup>1</sup>	N/A
Saskatoon Island	379	451	340	534	654	472	456	345	424	318 <sup>1</sup>	N/A
Sheep River (KC)											
- Sandy McNabb: A	714	657	575	512	817	391	ND	ND	ND	595	N/A
- Sandy McNabb: B	674	687	568	450	675	423	ND	ND	ND	489	N/A
<b>Total</b>	<b>1,388</b>	<b>1,344</b>	<b>1,143</b>	<b>962</b>	<b>1,492</b>	<b>814</b>	<b>ND</b>	<b>ND</b>	<b>ND</b>	<b>1,084</b>	<b>N/A</b>
Thunder Lake											
- Island View			533	778	476	906	137	ND	ND	ND	N/A
- Tenting Area 3			223	52	102	459	37	ND	ND	ND	N/A
<b>Total</b>	<b>693</b>	<b>887</b>	<b>756</b>	<b>830</b>	<b>578</b>	<b>1,365</b>	<b>174</b>	<b>ND</b>	<b>ND</b>	<b>ND</b>	<b>N/A</b>
Vermilion											
- Vermilion: A	14	78	152	135	68	212	60	99	88	92	4.5
- Vermilion: B	0	21	57	165	80	87	24	42	78	ND	N/A
- Vermilion: C	52	38	60	114	72	111	62	42	91	65	-28.6
- West	95	30	12	216	16	ND	30	ND	42	ND	N/A
<b>Total</b>	<b>161</b>	<b>167</b>	<b>281</b>	<b>680</b>	<b>259</b>	<b>410</b>	<b>176</b>	<b>183</b>	<b>299</b>	<b>157</b>	<b>-47.5</b>
Wabamun Lake											
- Wabamun Lake: A	236	158	193	231	96	ND	330	105	450	ND	N/A
- Wabamun Lake: B	589	417	232	390	315	ND	360	80	189	ND	N/A
<b>Total</b>	<b>825</b>	<b>575</b>	<b>425</b>	<b>666</b>	<b>416</b>	<b>ND</b>	<b>690</b>	<b>185</b>	<b>639</b>	<b>ND</b>	<b>N/A</b>
Whitney Lakes											
- Ross Lake: G	154	116	181	170	122	6	123	27 <sup>1</sup>	145 <sup>1</sup>	178 <sup>1</sup>	N/A
- Ross Lake: H	18	38	24	39	28	ND	195	6 <sup>1</sup>	95 <sup>1</sup>	88 <sup>1</sup>	N/A
<b>Total</b>	<b>172</b>	<b>154</b>	<b>205</b>	<b>209</b>	<b>150</b>	<b>6</b>	<b>318</b>	<b>33</b>	<b>240<sup>1</sup></b>	<b>266</b>	<b>10.8</b>

ND No Data available  
KC Kananaskis Country

N/A Not Applicable  
<sup>1</sup> Data Missing for one or more month(s)

**Summary of Historic Group Camping Use - 1993/94 To 2002/03  
(Group Unit Nights)**

<b>Provincial Park - Group Use Area</b>	1993/94	1994/95	1995/96	1996/97	1997/98	1998/99	1999/00	2000/01	2001/02	2002/03	<b>% Change From Last Year</b>
William A. Switzer											
- Beaver Ranch	121	187	164	81	148	36	20	<b>ND</b>	10 <sup>1</sup>	312	<b>N/A</b>
- Nordic Centre				219	0	0	<b>ND</b>	<b>ND</b>	10 <sup>1</sup>	156	<b>N/A</b>
- Pine Bay	742	507	665	552	691	214	41	<b>ND</b>	19 <sup>1</sup>	558	<b>N/A</b>
<b>Total</b>	<b>863</b>	<b>694</b>	<b>829</b>	<b>852</b>	<b>839</b>	<b>250</b>	<b>61</b>	<b>ND</b>	<b>39<sup>1</sup></b>	<b>1,026</b>	<b>N/A</b>
Winagami Lake	207	532	251	293	281	274	158	32	142	125	-12.0
Woolford	3	42	61	22	64	30	72	<b>ND</b>	95 <sup>1</sup>	59 <sup>1</sup>	<b>N/A</b>
Writing-On-Stone	456	584	520	521	483	416	426	373	380	345 <sup>1</sup>	<b>N/A</b>
Wyndham-Carseland											
- Carseland: A	358	305	327	356	310	36	<b>ND</b>	<b>ND</b>	<b>ND</b>	484 <sup>1</sup>	<b>N/A</b>
- Carseland: B	283	285	405	264	265	36	<b>ND</b>	<b>ND</b>	<b>ND</b>	<b>ND</b>	<b>N/A</b>
- Carseland: C	495	501	549	508	524	27	<b>ND</b>	<b>ND</b>	<b>ND</b>	<b>ND</b>	<b>N/A</b>
<b>Total</b>	<b>1,136</b>	<b>1,091</b>	<b>1,281</b>	<b>1,128</b>	<b>1,099</b>	<b>99</b>	<b>ND</b>	<b>ND</b>	<b>ND</b>	<b>484</b>	<b>N/A</b>
Young's Point	269	451	406	311	355	420	644	487	281	316	12.5

**ND** No Data available  
<sup>1</sup> Data Missing for one or more month(s)

**N/A** Not Applicable

**Summary of Historic Group Camping Use - 1993/94 To 2002/03  
(Group Unit Nights)**

<b>Provincial Recreation Area - Group Use Area</b>	1993/94	1994/95	1995/96	1996/97	1997/98	1998/99	1999/00	2000/01	2001/02	2002/03	<b>% Change From Last Year</b>	
Beaver Lake								ND	ND	ND	N/A	
Brazeau Reservoir								ND	ND	396	N/A	
Chambers Creek					398	406	449	458	376	392	4.3	
Deer Creek								126	85	120	41.2	
Dickson Dam - South Dyke - South Boat Launch								293	303 <sup>1</sup>	ND	N/A	
<b>Total</b>								<b>293</b>	<b>303<sup>1</sup></b>	<b>ND</b>	<b>N/A</b>	
<b>Elbow River Valley (KC, RA)</b>											N/A	
- Mesa Butte Equestrian	487	281	170	272	126	144	ND	ND	ND	382	N/A	
- Paddy's Flat	657	563	884	845	814	435	ND	ND	ND	ND	N/A	
- River Cove	888	877	566	502	992	634	ND	ND	ND	ND	N/A	
<b>Total</b>	<b>2,032</b>	<b>1,721</b>	<b>1,620</b>	<b>1,619</b>	<b>1,932</b>	<b>1,213</b>	<b>ND</b>	<b>ND</b>	<b>ND</b>	<b>382</b>	<b>N/A</b>	
<b>Highwood/Cataract (KC, RA)</b>											N/A	
- Etherington Creek	489	453	286	480	322	229	ND	ND	ND	506	N/A	
- Highwood River	662	510	200	427	660	290	ND	ND	ND	407	N/A	
<b>Total</b>	<b>1,151</b>	<b>963</b>	<b>486</b>	<b>907</b>	<b>982</b>	<b>519</b>	<b>ND</b>	<b>ND</b>	<b>ND</b>	<b>913</b>	<b>N/A</b>	
Kootenay Plains							1,622	1,765	2,238	1,687	1,954	15.8
Old Man River Dam		184	0	384	421	771	584	16	62	ND	N/A	
Old Man River North					23	17	ND	ND	ND	ND	N/A	
Prairie Creek Group						251	333	332	430	713	65.8	
Ram Falls								24	50	127	154.0	
<b>Sibbald (KC, RA)</b>											N/A	
- Pine Grove: A	1,062	750	709	552	0	ND	100	560	471 <sup>1</sup>	799	N/A	
- Pine Grove: B	869	711	769	537	0	ND	75	472	348 <sup>1</sup>	478	N/A	
- Stony Creek	251	77	193	134	0	69	39	176	98 <sup>1</sup>	751	N/A	
<b>Total</b>	<b>2,182</b>	<b>1,538</b>	<b>1,671</b>	<b>1,223</b>	<b>0</b>	<b>69</b>	<b>214</b>	<b>1,208</b>	<b>917</b>	<b>2,028</b>	<b>N/A</b>	

ND No Data available  
 KC Kananaskis Country  
<sup>1</sup> Data Missing for one or more month(s)

N/A Not Applicable  
 RA Consolidation of recreation areas for reporting purposes.

**Summary of Historic Group Camping Use - 1993/94 To 2002/03  
(Group Unit Nights)**

<b>Provincial Recreation Area - Group Use Area</b>	1993/94	1994/95	1995/96	1996/97	1997/98	1998/99	1999/00	2000/01	2001/02	2002/03	<b>% Change From Last Year</b>
Snow Creek					268	353	318	350	583	736	26.2
South Fork									40	67	67.5
St. Mary's	47	169	147	71	34	N/A	C	ND	ND	ND	N/A
Sulphur Lake								33	143	132	-7.7
Wildhay Group						15	DI	ND	ND	ND	N/A

**ND** No Data available  
**DI** Data Incomplete

**N/A** Not Applicable  
**C** Construction

**Summary of Historic Day Use - 1993/94 To 2002/03  
(Day Use Party Visits)**

<b>Provincial Park - Day Use Area</b>	1993/94	1994/95	1995/96	1996/97	1997/98	1998/99	1999/00	2000/01	2001/02	2002/03	<b>% Change From Last Year</b>
Aspen Beach											
- Lakeview											
- Brewer's Beach	10,225	2,250	4,025	3,125	3,250						
- Ebeling Beach	57,975	69,025	53,975	65,350	68,375	62,575	48,675	58,260	56,484 <sup>2</sup>	56,616 <sup>2</sup>	N/A
<b>Total</b>	<b>68,200</b>	<b>71,300</b>	<b>58,025</b>	<b>68,425</b>	<b>71,575</b>	<b>62,575</b>	<b>48,675</b>	<b>58,260</b>	<b>67,722<sup>3</sup></b>	59,442	N/A
Beauvais Lake	12,200	12,000	13,525	12,800	6,450	5,300	5,250	ND	ND	ND	N/A
Big Hill Springs	11,100	6,150	ND	ND	ND	ND	ND	ND	ND	ND	N/A
Big Knife	4,050	50	3,450	3,150	2,900	3,400	2,800	ND	3,670	830	-77.4
Calling Lake	2,925	3,075	3,250	ND	ND	ND	ND	ND	ND	ND	N/A
Carson-Pegasus	15,500	15,675	13,950	13,125	11,975	11,900	17,050	14,713	8,688 <sup>2</sup>	12,488	N/A
Chain Lakes	9,575	10,075	9,150	6,600	7,450	9,200	8,495	ND	ND	ND	N/A
Cold Lake	10,375	15,650	13,825	14,025	14,925	15,775	14,840	ND	ND	ND	N/A
Crimson Lake											
- Crimson Lake	8,300	9,525	11,075	9,750	ND	ND	ND	ND	ND	ND	N/A
- Twin Lakes	6,125	2,025	6,225	7,975	ND	ND	ND	ND	ND	ND	N/A
<b>Total</b>	<b>14,425</b>	<b>11,575</b>	<b>17,450</b>	<b>17,725</b>	<b>ND</b>	<b>ND</b>	<b>15,583<sup>1</sup></b>	<b>ND</b>	<b>ND</b>	<b>ND</b>	N/A
Cross Lake	5,100	4,550	4,700	5,275	7,550	6,875	6,375	6,798	ND	ND	N/A
Cypress Hills											
- Elkwater Townsite	49,875	54,800	48,475	49,700	48,725	52,550	59,950	61,671	23,331 <sup>2</sup>	39,035 <sup>2</sup>	N/A
- Reesor Lake/Spruce Coulee	8,750	9,550	9,200	9,325	9,500	8,975	250	ND	1,091 <sup>2</sup>	ND	N/A
<b>Total</b>	<b>58,175</b>	<b>63,875</b>	<b>57,350</b>	<b>58,675</b>	<b>57,650</b>	<b>61,125</b>	<b>60,050</b>	<b>57,932</b>	<b>54,573<sup>4</sup></b>	<b>36,574</b>	-33.0
Dillberry Lake	6,050	6,425	5,725	4,300	4,775	4,125	5,070	ND	ND	1,877	N/A
Dinosaur	13,475	13,500	14,700	12,550	13,550	14,600	15,475	13,404	13,438	13,697	1.9
Dry Island Buffalo Jump											
- Dry Island Buffalo Jump	3,275	3,075	3,625	3,450	3,650	3,975	4,500	ND	ND	3,588	N/A
- Tolman Bridge East	4,225	5,525	5,425	5,175	5,350	4,600	4,700	ND	ND	5,359	N/A
- Tolman Bridge West	1,150	1,550	4,375	2,275	2,125	2,775	ND	ND	ND	520 <sup>2</sup>	N/A
<b>Total</b>	<b>8,200</b>	<b>8,650</b>	<b>12,575</b>	<b>10,150</b>	<b>10,375</b>	<b>10,525</b>	<b>9,150</b>	<b>ND</b>	<b>ND</b>	<b>8,436</b>	N/A

ND No Data available  
<sup>3</sup> Park total includes an estimate for May/September day use

<sup>1</sup> Reported day use estimated  
<sup>2</sup> Data Missing for one or more month(s)  
<sup>4</sup> Park total includes an estimate for August to September day use

**Summary of Historic Day Use - 1993/94 To 2002/03  
(Day Use Party Visits)**

<b>Provincial Park - Day Use Area</b>	1993/94	1994/95	1995/96	1996/97	1997/98	1998/99	1999/00	2000/01	2001/02	2002/03	<b>% Change From Last Year</b>
Dunvegan	5,650	4,675	4,475	2,925	3,675	4,175	2,625	3,817	2,832 <sup>1</sup>	<b>ND</b>	<b>N/A</b>
Fish Creek											
- Ranch Area	82,625	142,525	75,000	82,275	102,950	124,000	224,475	72,840 <sup>1</sup>	193,459	188,953	-2.3
- Votier's Flats	77,075	60,875	59,075	58,700	65,175	65,100	79,800	152,396 <sup>1</sup>	70,566	70,213	-0.5
- Mallard Point	36,144	36,650	33,075	37,100	38,025	47,850	45,250	62,301 <sup>1</sup>	11,512	46,210	<b>N/A</b>
- Glennfield	120,350	110,450	109,845	110,025	136,325	150,050	162,450	203,904 <sup>1</sup>	200,726	168,890	-15.9
- Shaw's Meadow	74,623	70,075	69,525	72,050	75,900	93,325	<b>AR</b>	<b>AR</b>	<b>AR</b>	<b>AR</b>	<b>N/A</b>
- Bankside/Burnsmead	37,200	42,925	39,200	48,900	34,525	35,825	27,025	11,816 <sup>1</sup>	44,884	41,999	-6.4
- Sikome Lake/Hulls Wood	194,775	157,475	168,825	211,975	176,300	183,000	172,400	70,946 <sup>1</sup>	287,125 <sup>1</sup>	215,453	<b>N/A</b>
- Shannon Terrace	58,300	67,600	63,500	68,600	70,425	67,852	16,600	60,675 <sup>1</sup>	65,609	74,187	13.1
- Bebo Grove	103,075	123,650	116,000	112,125	120,525	130,250	127,375	156,091 <sup>1</sup>	138,599	124,672	-10.0
<b>Total</b>	<b>776,650</b>	<b>808,975</b>	<b>729,680</b>	<b>806,350</b>	<b>820,075</b>	<b>890,475</b>	<b>909,950</b>	<b>769,261<sup>1</sup></b>	<b>1,042,451</b>	<b>922,613</b>	<b>N/A</b>
Garner Lake	8,100	9,550	9,175	9,850	5,700	5,725	8,000	<b>ND</b>	<b>ND</b>	<b>ND</b>	<b>N/A</b>
Gooseberry Lake	3,550	2,525	3,300	1,975	3,050	3,325	2,250	1,575	<b>ND</b>	2,640	<b>N/A</b>
Gregoire Lake											
- Anzac	5,775	6,375	6,100	7,875	7,975	7,525	1,350	<b>ND</b>	<b>ND</b>	<b>ND</b>	<b>N/A</b>
- Gregoire Lake	24,375	23,425	20,150	23,400	24,025	23,475	23,500	24,088	23,523	23,702	0.8
<b>Total</b>	<b>30,275</b>	<b>29,775</b>	<b>26,325</b>	<b>31,150</b>	<b>32,000</b>	<b>30,925</b>	<b>24,750</b>	<b>24,088</b>	<b>24,185</b>	<b>24,358</b>	0.7
Hilliard's Bay	13,835	12,300	<b>ND</b>	<b>ND</b>	2,925	4,075	2,550	5,476	5,432	4,854	-10.6
Kinbrook Island	27,550	32,975	30,775	20,725	29,475	25,500	27,890	<b>ND</b>	<b>ND</b>	<b>ND</b>	<b>N/A</b>
Lesser Slave Lake											
- Marten River	2,075	2,575	2,450	2,275	2,025	1,875	425	<b>ND</b>	<b>ND</b>	<b>ND</b>	<b>N/A</b>
- Marten Mountain	1,700	575	2,500	1,825	2,500	2,825	675	<b>ND</b>	<b>ND</b>	<b>ND</b>	<b>N/A</b>
- North Shore <sup>2</sup>	19,925	16,125	16,900	13,850	8,000	16,375	4,125	<b>ND</b>	<b>ND</b>	<b>ND</b>	<b>N/A</b>
<b>Total</b>	<b>20,625</b>	<b>17,675</b>	<b>18,575</b>	<b>15,000</b>	<b>10,500</b>	<b>17,125</b>	<b>4,200</b>	<b>ND</b>	<b>ND</b>	<b>ND</b>	<b>N/A</b>
Little Bow	11,200	13,400	11,700	9,925	9,925	11,230	11,230	<b>ND</b>	<b>ND</b>	<b>ND</b>	<b>N/A</b>
Little Fish Lake	0	950	875	975	700	425	785	<b>ND</b>	<b>ND</b>	464 <sup>1</sup>	<b>N/A</b>
Long Lake	8,325	9,500	9,125	9,275	8,275	10,050	6,965	9,515	10,323	12,002	16.3

**ND** No Data available

**AR** Area Reclaimed

<sup>2</sup> Includes Beach Road North/South and Devonshire Beach

**N/A** Not Applicable

<sup>1</sup> Data Missing for one or more month(s)



**Summary of Historic Day Use - 1993/94 To 2002/03  
(Day Use Party Visits)**

<b>Provincial Park - Day Use Area</b>	1993/94	1994/95	1995/96	1996/97	1997/98	1998/99	1999/00	2000/01	2001/02	2002/03	<b>% Change From Last Year</b>
<b>Midland</b>											
- Mine Site 1 2 3	5,375	4,650	5,575	5,350	4,800	7,375	ND	ND	ND	ND	N/A
- McMullen Island	8,100	9,079	7,350	8,575	8,450	11,825	ND	ND	ND	ND	N/A
- Tyrell Museum	138,625	130,075	110,400	133,150	158,450	117,700	ND	ND	ND	ND	N/A
<b>Total</b>	<b>143,325</b>	<b>134,875</b>	<b>115,500</b>	<b>138,325</b>	<b>163,125</b>	<b>126,275</b>	<b>135,620<sup>1</sup></b>	<b>139,915<sup>1</sup></b>	<b>139,915<sup>1</sup></b>	<b>139,915<sup>1</sup></b>	<b>N/A</b>
Miquelon Lake	20,875	27,900	25,675	26,700	27,625	30,350	27,000	29,854	26,115	12,170	-53.4
Moonshine Lake	6,450	6,730	9,200	11,750	10,100	9,775	8,975	6,618 <sup>2</sup>	12,795	10,134	-20.8
Moose Lake	2,600	2,875	2,900	3,100	1,600	2,615	2,615	ND	ND	ND	N/A
Notikewin	850	800	1,450	600	1,000	940	940	ND	ND	ND	N/A
O'Brien	11,325	12,750	11,275	6,800	5,225	9,475	9,475	ND	ND	ND	N/A
<b>Park Lake</b>											
- Park Lake: Boat Launch	3,660	5,925	6,375	7,425	7,100	4,400	3,000	4,810	ND	ND	N/A
- Park Lake: Main Area	28,025	37,900	31,750	33,675	32,650	24,425	18,725	24,827	ND	ND	N/A
<b>Total</b>	<b>31,800</b>	<b>43,775</b>	<b>38,125</b>	<b>41,175</b>	<b>39,900</b>	<b>28,775</b>	<b>21,725</b>	<b>29,736</b>	<b>ND</b>	<b>ND</b>	<b>N/A</b>
Pembina River	13,600	14,550	15,400	16,475	17,275	18,225	15,075	ND	ND	6,968 <sup>2</sup>	N/A
<b>Pigeon Lake</b>											
- Pigeon Lake	8,725	8,475	8,225	7,650	5,825	ND	ND	ND	8,763	ND	N/A
- Zeiner	4,725	4,000	3,325	4,375	4,300	ND	ND	ND	4,880 <sup>2</sup>	5,270	N/A
<b>Total</b>	<b>13,450</b>	<b>12,525</b>	<b>11,525</b>	<b>12,000</b>	<b>10,100</b>	<b>11,920<sup>1</sup></b>	<b>11,920<sup>1</sup></b>	<b>ND</b>	<b>15,009<sup>2</sup></b>	<b>6,715</b>	<b>N/A</b>
Police Outpost	4,900	6,300	8,875	8,875	7,925	5,550	8,950	9,867	ND	ND	N/A
Queen Elizabeth (94)	4,650	4,750	8,675	8,825	8,700	7,075	8,400	8,960	9,553	11,282	18.1
Red Lodge	11,325	ND	ND	ND	6,300	6,725	6,513	4,375	ND	4,020 <sup>2</sup>	N/A
Rochon Sands	5,975	6,700	4,800	9,200	8,975	6,275	5,950	6,050	6,890	6,260	-9.1
Saskatoon Island	25,025	25,875	29,425	29,450	28,975	29,075	1,794	ND	ND	ND	N/A
Sir Winston Churchill	21,775	12,300	10,225	11,425	12,800	13,705	13,705	ND	ND	ND	N/A
Strathcona Science	87,025	14,400	ND	6,175	ND	ND	ND	ND	ND	ND	N/A
Sylvan Lake	79,950	47,457	6,275	20,575	28,400	75,545	75,545	82,158 <sup>1</sup>	82,158 <sup>1</sup>	114,741	39.7

**94** Day Use Calibration Program recalculated in 1995/96: Changes are not reflected for previous fiscal years.

**ND** No Data available

<sup>1</sup> Reported day use estimated

**N/A** Not Applicable

<sup>2</sup> Data Missing for one or more month(s)

**Summary of Historic Day Use - 1993/94 To 2002/03  
(Day Use Party Visits)**

<b>Provincial Park - Day Use Area</b>	1993/94	1994/95	1995/96	1996/97	1997/98	1998/99	1999/00	2000/01	2001/02	2002/03	<b>% Change From Last Year</b>
Thunder Lake											
- Thunder Lake-Boat Launch	7,475	10,925	13,950	8,450	6,825	7,425	5,375	6,933	ND	ND	N/A
- Thunder Lake-Main Area	11,500	18,625	11,725	11,200	10,200	10,950	6,450	7,215	ND	ND	N/A
<b>Total</b>	<b>18,950</b>	<b>29,500</b>	<b>25,500</b>	<b>19,575</b>	<b>17,000</b>	<b>18,275</b>	<b>11,775</b>	<b>14,215</b>	<b>ND</b>	<b>ND</b>	<b>N/A</b>
Tillebrook	8,600	12,650	8,250	8,250	8,050	6,525	8,745	ND	ND	ND	N/A
Vermilion	15,800	7,212	9,650	8,400	10,725	14,275	14,200	15,638	15,389	12,947	-15.9
Wabamun Lake	29,825	67,500	24,750	27,875	22,575	26,150	18,675	24,435	20,064	ND	N/A
Whitney Lakes											
- Ross Lake	2,175	2,000	2,225	2,225	3,100	1,975	2,675	ND	ND	ND	N/A
- Whitney Lake	525	225	ND	100	175	175	125	ND	ND	ND	N/A
- Ernie's Point	1,445	1,150	1,475	1,150	2,075	1,475	825	ND	860	ND	N/A
<b>Total</b>	<b>4,100</b>	<b>3,350</b>	<b>3,950</b>	<b>3,525</b>	<b>5,350</b>	<b>3,750</b>	<b>3,600</b>	<b>ND</b>	<b>768</b>	<b>ND</b>	<b>N/A</b>
William A. Switzer											
- Jarvis Lake	4,075	6,550	6,250	6,125	7,850	7,175	1,600	3,002	2,966	ND	N/A
- Gregg Lake	1,325	925	1,475	1,400	1,750	1,900	200	1,596	122 <sup>1</sup>	2,499 <sup>1</sup>	N/A
- Cache/Graveyard	2,475	1,450	1,450	1,425	1,600	1,525	325	557	2,513	1,052	-58.1
- Kelley's Bathtub	925	625	1,100	575	1,100	ND	ND	ND	ND	ND	N/A
<b>Total</b>	<b>8,050</b>	<b>9,100</b>	<b>9,850</b>	<b>9,000</b>	<b>11,650</b>	<b>9,530</b>	<b>2,025</b>	<b>5,095</b>	<b>5,426<sup>1</sup></b>	<b>2,618</b>	<b>N/A</b>
Williamson	10,150	3,225	6,675	4,525	6,275	4,700	4,650	ND	ND	ND	N/A
Willow Creek	2,600	4,425	2,775	5,075	7,650	4,075	4,800	ND	ND	ND	N/A
Winagami Lake	7,525	7,775	9,300	7,275	4,925	6,700	6,075	4,253	5,516	5,400	-2.1
Woolford	1,300	975	2,100	1,800	1,400	1,375	925	729	ND	ND	N/A
Writing-On-Stone	8,700	9,100	10,125	10,225	8,525	8,875	10,375	11,971	7,487 <sup>1</sup>	8,360	N/A

ND No Data available  
<sup>1</sup> Data Missing for one or more month(s)

N/A Not Applicable

**Summary of Historic Day Use - 1993/94 To 2002/03  
(Day Use Party Visits)**

<b>Provincial Park - Day Use Area</b>	1993/94	1994/95	1995/96	1996/97	1997/98	1998/99	1999/00	2000/01	2001/02	2002/03	<b>% Change From Last Year</b>
Wyndham-Carseland											
- Wyndham-Main	11,775	10,800	9,175	9,825	9,550	ND	ND	ND	ND	ND	N/A
- Wyndham-Johnson Island	4,525	2,650	4,200	4,750	4,525	ND	ND	ND	ND	ND	N/A
- Wyndham-Weir	5,025	1,200	2,825	2,675	3,975	ND	ND	ND	ND	ND	N/A
Total	<b>21,325</b>	<b>15,200</b>	<b>16,150</b>	<b>17,125</b>	<b>18,000</b>	<b>17,560<sup>1</sup></b>	<b>17,560<sup>1</sup></b>	<b>ND</b>	<b>ND</b>	<b>ND</b>	<b>N/A</b>
Young's Point	3,225	3,450	3,250	4,025	4,725	2,450	3,300	2,388	2,181	2,880	32.0

ND No Data available  
<sup>1</sup> Reported day use estimated

N/A Not Applicable

**Summary of Historic Day Use - 1993/94 To 2002/03  
(Day Use Party Visits)**

<b>Provincial Recreation Area - Day Use Area</b>	1993/94	1994/95	1995/96	1996/97	1997/98	1998/99	1999/00	2000/01	2001/02	2002/03	<b>% Change From Last Year</b>
Beaver Lake	10,675	13,000	12,525	9,350	8,325	10,775	10,775	ND	ND	ND	N/A
Bleriot Ferry	5,075	5,125	6,425	7,200	6,725	7,550	6,605	ND	ND	5,025	N/A
Buck Lake								ND	ND	ND	N/A
Buffalo Lake	2,225	1,675	2,550	3,200	2,725	3,625	3,325	ND	4,410	4,190	-5.0
Calhoun Bay	2,250	1,900	1,900	ND	2,575	2,220	2,220	ND	ND	ND	N/A
Cooking Lake-Blackfoot											
- Central	2,625	2,825	1,375	1,700	2,550	2,025	325	ND	2,504 <sup>1</sup>	1,927 <sup>1</sup>	N/A
- Waskahegan	18,850	24,775	14,000	12,150	7,475	10,200	7,225	ND	1,773 <sup>1</sup>	6,628 <sup>1</sup>	N/A
- Islet Lake	1,775	2,925	2,300	2,775	2,375	3,125	2,625	ND	796 <sup>1</sup>	1,694 <sup>1</sup>	N/A
- Blackfoot Lake	1,850	1,550	1,400	2,425	1,475	1,875	1,675	ND	202 <sup>1</sup>	1,395 <sup>1</sup>	N/A
<b>Total</b>	<b>24,925</b>	<b>31,625</b>	<b>18,200</b>	<b>17,800</b>	<b>13,550</b>	<b>15,975</b>	<b>11,675</b>	<b>ND</b>	<b>5,572<sup>1</sup></b>	<b>10,551</b>	<b>N/A</b>
Crane Lake East	5,515	6,075	6,225	6,800	9,325	6,788	6,788	ND	ND	ND	N/A
Crane Lake West	7,225	7,550	7,925	7,975	8,950	7,925	7,925	ND	ND	ND	N/A
English Bay	3,625	3,650	3,775	3,175	2,500	3,345	3,345	ND	ND	ND	N/A
Figure Eight Lake	8,250	12,075	13,050	19,350	12,850	8,900	6,725	9,055	8,482	7,870	-7.2
Fork Lake	2,900	2,500	2,750	2,750	4,900	3,160	3,160	ND	ND	ND	N/A
Franchere Bay	9,225	8,425	7,525	7,125	6,775	7,815	7,815	ND	ND	ND	N/A
French Bay	5,125	4,700	4,200	4,425	ND	ND	4,442	ND	ND	ND	N/A
Ghost Reservoir											
- North Entrance								23,125	ND	16,703 <sup>1</sup>	N/A
- South Entrance								16,625	ND	16,485	N/A
<b>Total</b>								<b>32,150</b>	<b>ND</b>	<b>27,095</b>	<b>N/A</b>
Hangingstone		7,225	4,500	4,575	4,175	5,119	4,925	3,854	ND	ND	N/A
Hanmore Lake	75	3,650	3,550	2,800	1,325	2,025	2,670	ND	ND	ND	N/A
Hornbeck Creek							7,500	ND	ND	ND	N/A
Indian Graves	900	1,375	2,200	2,850	ND	3,900	3,900	ND	ND	ND	N/A
Island Lake	2,650	7,750	ND	ND	ND	ND	ND	ND	ND	ND	N/A

ND No Data available  
<sup>1</sup> Data Missing for one or more month(s)

N/A Not Applicable

**Summary of Historic Day Use - 1993/94 To 2002/03  
(Day Use Party Visits)**

<b>Provincial Recreation Area - Day Use Area</b>	1993/94	1994/95	1995/96	1996/97	1997/98	1998/99	1999/00	2000/01	2001/02	2002/03	<b>% Change From Last Year</b>
Kehiwin	10,875	7,325	10,075	9,175	7,975	9,085	9,085	ND	ND	ND	N/A
Lundbreck Falls	9,425	25,975	24,525	23,725	21,900	20,750	19,850	ND	ND	ND	N/A
Minnie Lake		1,575	3,675	3,025	1,700	2,494	2,494	ND	ND	ND	N/A
North Buck Lake	15,875	18,450	14,500	17,325	12,875	17,550	9,400	ND	ND	ND	N/A
Payne	5,275	8,350	6,475	6,300	6,475	6,575	3,725	4,103	ND	ND	N/A
St. Mary's	5,100	8,750	9,750	7,450	6,550	ND	8,125	1,989	ND	ND	N/A
Sulphur Lake									1,080	930	-13.9
The Narrows	2,200	2,075	8,600	4,125	2,900	2,325	3,200	700 <sup>1</sup>	3,820	2,820	-26.2
Travers Reservoir		2,450	ND	ND	ND	ND	ND	ND	ND	ND	N/A
Twin Lakes	1,550	1,200	1,650	2,220	2,350	1,794	3,825	1,875	ND	2,430	N/A
Waterton Reservoir	1,025	5,950	4,050	5,325	ND	ND	5,108	ND	ND	ND	N/A

ND No Data  
<sup>1</sup> Data Missing for one or more month(s)

N/A Not Applicable

**Summary of Historic Day Use - 1993/94 To 2002/03  
(Day Use Party Visits)**

<b>Kananaskis Country</b>	1993/94	1994/95	1995/96	1996/97	1997/98	1998/99	1999/00	2000/01	2001/02	2002/03	<b>% Change From Last Year</b>
Bow Corridor (RA)								73,050	28,450 <sup>2</sup>	58,930	N/A
Bow Valley (PP)								155,508	108,681 <sup>2</sup>	106,454	N/A
Bow Valley Wildland (PP)								3,425	3,300	3,250	-1.5
Canmore Nordic Centre (PP)	57,050	63,125	64,075	64,850	74,625	87,275	83,375	67,915	66,827	66,980	0.2
Elbow River Valley (RA)	194,925	185,700	188,725	215,375	107,325	251,475	ND	202,133 <sup>1</sup>	202,133 <sup>1</sup>	202,133 <sup>1</sup>	N/A
Elbow Sheep Wildland (PP)								2,225	1,660	1,780	7.2
Evan-Thomas (PRA)								183,090	121,176	118,660	-2.1
Highwood/Cataract (RA)	31,825	21,000	18,600	ND	ND	ND	ND	17,408 <sup>1</sup>	17,408 <sup>1</sup>	17,408 <sup>1</sup>	N/A
Peter Lougheed (PP)	101,275	96,100	100,700	107,850	91,700	82,250	ND	123,420	78,761 <sup>2</sup>	77,163	N/A
Sheep River (PP)	15,475	19,900	17,875	19,650	26,375	32,600	ND	21,273 <sup>1</sup>	21,273 <sup>1</sup>	21,273 <sup>1</sup>	N/A
Sibbald (RA)	60,625	29,425	26,750	41,675	ND	ND	ND	25,415	17,199	25,103	46.0
Spray Valley (PP)								166,430	130,798 <sup>2</sup>	129,047	N/A

**RA** Consolidation of recreation areas for reporting purposes.

**N/A** Not Applicable

**PRA** Provincial Recreation Area

<sup>2</sup> Day Use Incomplete

**ND** Not Reported

**PP** Provincial Park

<sup>1</sup> Reported day use estimated

**Note:** Comparison does not include day use party visits prior to the completion of the year 2000 traffic survey for Bow Corridor, Bow Valley, Elbow Sheep Wildland, Evan-Thomas PRA and Spray Valley due to changes made to both the traffic survey methodology and geographic boundaries.

## **Appendix**

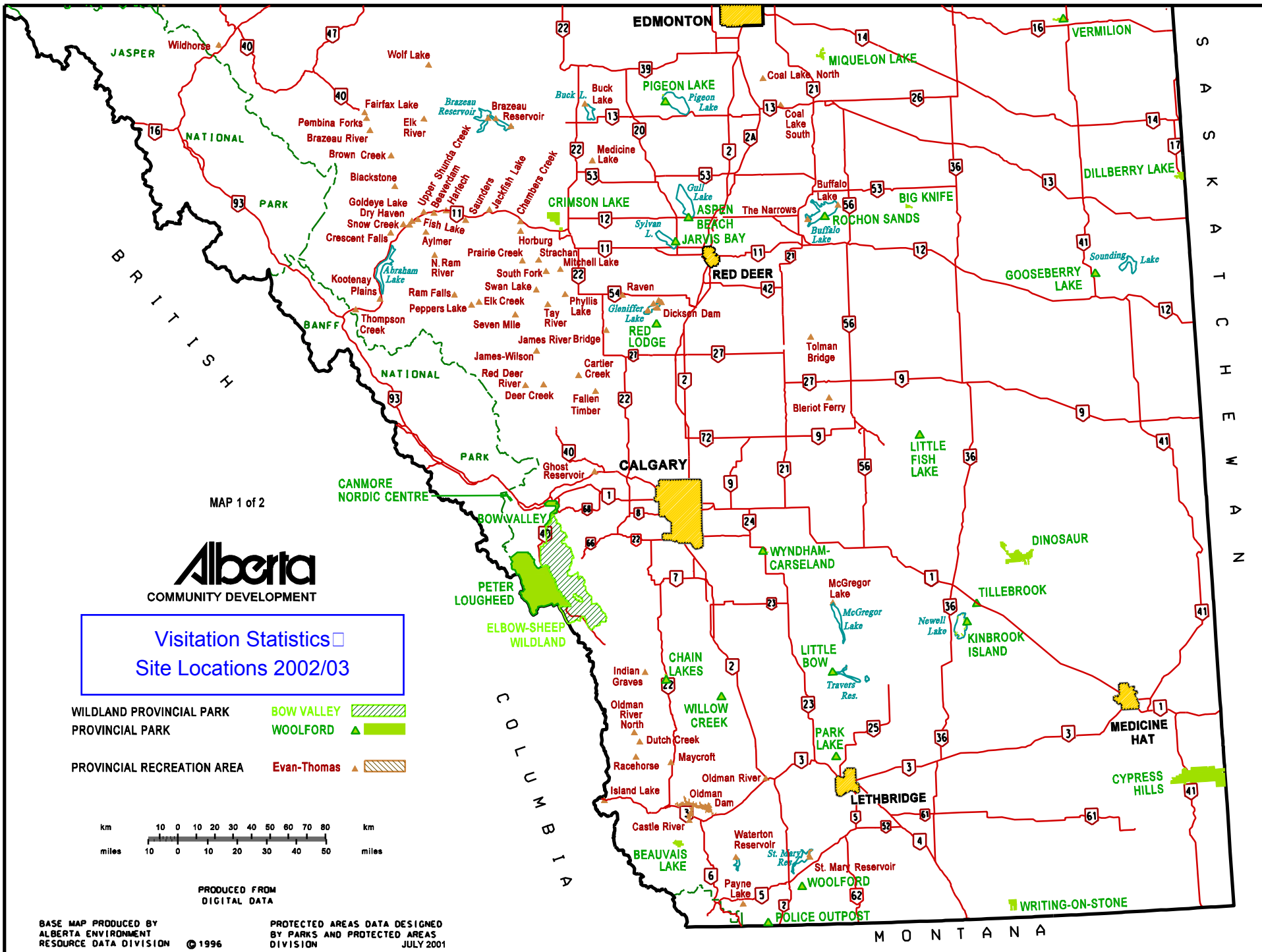
Map 1: Southern Alberta

Map 2: Northern Alberta

Summer Facilities Chart

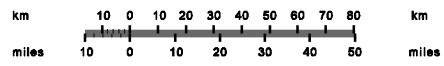






Visitation Statistics □  
 Site Locations 2002/03 ▲

- WILDLAND PROVINCIAL PARK
 ▨ BOW VALLEY
 ▧ WOOLFORD
- ▨ PROVINCIAL PARK
 ▧ EVAN-THOMAS
- ▧ PROVINCIAL RECREATION AREA
 ▲



PRODUCED FROM DIGITAL DATA

BASE MAP PRODUCED BY ALBERTA ENVIRONMENT RESOURCE DATA DIVISION © 1996

PROTECTED AREAS DATA DESIGNED BY PARKS AND PROTECTED AREAS DIVISION JULY 2001

MONTANA

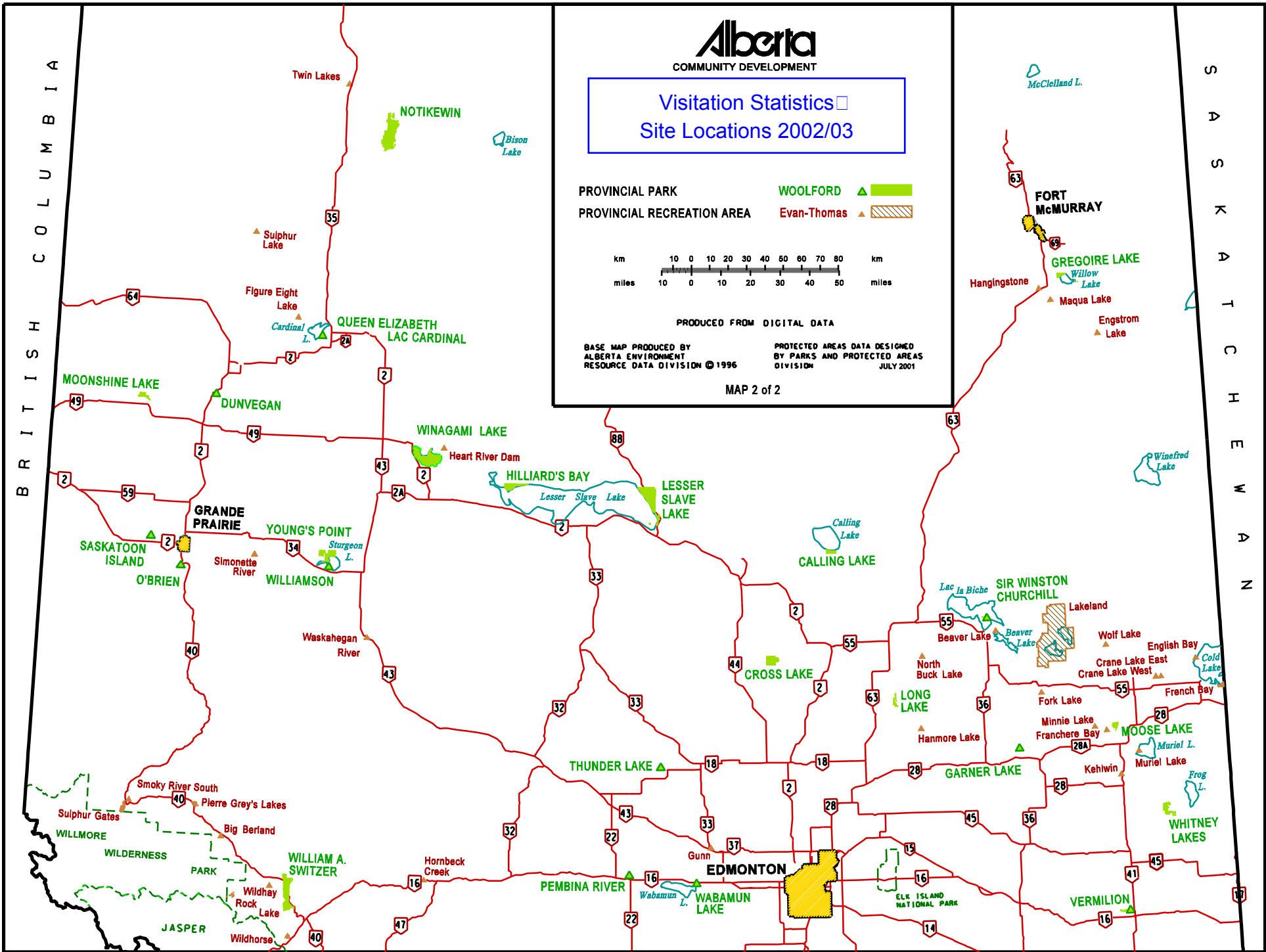
SASKATCHEWAN

BRITISH COLUMBIA

MAP 1 of 2

**Alberta**  
COMMUNITY DEVELOPMENT







## Facilities and Services Information

Park or Recreation Area Name	Number Of Campsites	Facility Operator	Firewood Concession	Reservations	Water Hook-ups	Sewage Disposal	Electrical Hook-ups	Flush Toilets	Showers	Group Camping Area	Picnic Tables	Picnic Shelter	Fire pits	Water	Flush Toilets	Fishing	Fish Cleaning Station	Swimming	Change House	Beach	Playground	Horse Shoe Pits	Trails	Boating	Boat Launch	Hand Boat Launch	Park Office	Wheelchair Access	Public Phone	Food Concession	Boat Rentals	Interpretive Programs	
Aspen Beach	586	•	\$	•		•	•	•	•	•	105		•	•	•	•	•	•	•	•	•	•	•	•	•	•	•	•	•	•	•	•	
Aylmer	7	•											•			•							•			•							
Beauvais Lake	85	•				•				•	37	•	•	•		•	•				•		•	•	•	•	•	•	•			•	
Beaverdam	11	•									2	•	•			•							•										
Beaver Lake	87	•	\$	•			•	•	•			•	•	•		•	•	•		•	•			•	•			•	•		•		
Beaver Lake Group Camp	80	•		•			•			•						•	•	•		•				•		•							
Big Berland	18	•									2	•	•	•		•	•						•										
Big Hill Springs		•									4		•	•									•										
Big Knife	50					•					45		•	•		•		•			•	•	•	•	•		•		•			•	
Blackstone	10	•									2	•	•			•							•	•									
Bleriot Ferry	28												•	•		•	•	•															
Bluerock Wildland	6												•			•							•										
Bow Corridor	96	•	\$			•					19	•	•	•		•							•			•		•	•	•			
Bow Valley	302	•	•	•	•	•	•	•	•	•	114	•	•	•	•	•					•		•	•	•			•	•			•	
Bow Valley Wildland	20												•			•																	
Brazeau Reservoir	69	•								•			•	•		•		•						•	•				•				
Brazeau River	7	•		•						•			•	•		•	•						•	•									
Brown Creek	9	•		•									•	•		•															•		
Buck Lake	27	•									5		•	•		•	•	•						•	•								
Buffalo Lake	30		\$										•	•		•		•			•	•		•									
Calhoun Bay	50	•	\$								5		•	•		•	•				•		•	•		•		•	•				
Calling Lake	25					•		•			10		•	•	•	•	•			•	•			•	•		•						
Canmore Nordic Centre				•					•		50	•		•	•				•				•						•	•			
Carson - Pegasus	182	•	\$	•		•	•	•	•	•	14		•	•	•	•	•			•	•	•		•	•	•	•	•	•	•	•	•	
Cartier Creek	19	•											•			•																	
Castle River	20	•	\$										•	•		•												•					
Chain Lakes	125	•				•				•	18		•	•		•					•	•		•	•		•	•	•			•	
Chambers Creek	25	•								•	2	•	•	•		•							•						•				

## Facilities and Services Information

Park or Recreation Area Name	Number Of Campsites	Facility Operator	Firewood Concession	Reservations	Water Hook-ups	Sewage Disposal	Electrical Hook-ups	Flush Toilets	Showers	Group Camping Area	Picnic Tables	Picnic Shelter	Fire pits	Water	Flush Toilets	Fishing	Fish Cleaning Station	Swimming	Change House	Beach	Playground	Horse Shoe Pits	Trails	Boating	Boat Launch	Hand Boat Launch	Park Office	Wheelchair Access	Public Phone	Food Concession	Boat Rentals	Interpretive Programs			
Chinook	74	•	\$									•	•		•																				
Coal Lake North	10		\$									•	•		•									•	•										
Coal Lake South	14		\$									•	•		•									•	•										
Coalspur	8	•										•	•		•																				
Cold Lake	117					•	•	•	•	•	35	•	•	•	•	•	•	•	•	•	•	•	•	•	•	•	•	•	•	•	•	•			
Cooking Lake/Blackfoot											60	•	•	•									•	•		•	•	•	•	•	•	•			
Crane Lake East	26	•		•								•	•	•		•	•	•						•	•			•	•	•	•	•			
Crane Lake West	24	•		•								•	•	•		•	•	•						•	•			•	•	•	•	•			
Crescent Falls	31	•									6		•		•									•											
Crimson Lake	210	•	\$	•		•	•	•	•	•	40	•	•	•	•	•	•	•		•	•	•	•	•	•	•	•	•	•	•	•	•	•		
Cross Lake	130			•		•	•	•	•	•	26	•	•	•	•	•	•	•	•		•	•	•	•	•	•	•	•	•	•	•	•	•		
Cypress Hills	417	•	\$	•	•	•	•	•	•	•	91	•		•	•	•	•	•		•	•	•	•	•	•	•	•	•	•	•	•	•	•		
Deer Creek	10									•		•	•		•																				
Dickson Dam	75	•		•						•	13	•	•		•	•	•			•	•	•	•	•	•			•	•	•	•	•			
Dillberry Lake	73					•	•	•	•	•	135	•	•	•		•	•	•	•	•	•	•	•	•	•	•	•	•	•	•	•	•	•		
Dinosaur	126	•	\$	•		•	•	•	•	•			•	•	•						•					•	•	•	•	•	•	•	•		
Don Getty Wildland	6															•								•											
Dry Haven	14	•									6	•	•			•								•											
Dry Island Buffalo Jump	66		•								50	•	•	•		•		•						•		•	•								
Dunvegan	67					•	•				15	•	•	•		•						•	•		•	•		•	•	•	•	•	•		
Dutch Creek	43	•									4	•	•	•		•								•										•	
Elbow River Valley	620	•	\$	•		•		•	•	•	101	•	•	•	•	•				•	•					•			•	•	•	•	•		
Elbow-Sheep Wildland	20			•												•								•											
Elk Creek	13	•		•							5		•	•		•								•											
Elk River	16	•		•							2		•	•		•							•												
English Bay	30	•	\$									•				•	•	•		•				•	•			•							
Engstrom Lake	12										3	•	•		•	•								•	•		•								
Evan-Thomas	229	•	\$	•		•	•	•	•	•		•	•	•	•								•	•					•	•	•	•	•	•	
Fairfax Lake	39	•		•								•			•	•								•	•										
Fallen Timber	20	•										•			•																				

## Facilities and Services Information

Park or Recreation Area Name	Number Of Campsites	Facility Operator	Firewood Concession	Reservations	Water Hook-ups	Sewage Disposal	Electrical Hook-ups	Flush Toilets	Showers	Group Camping Area	Picnic Tables	Picnic Shelter	Fire pits	Water	Flush Toilets	Fishing	Fish Cleaning Station	Swimming	Change House	Beach	Playground	Horse Shoe Pits	Trails	Boating	Boat Launch	Hand Boat Launch	Park Office	Wheelchair Access	Public Phone	Food Concession	Boat Rentals	Interpretive Programs	
Fickle Lake	41															•							•	•	•								
Figure Eight Lake	19										10		•	•		•	•	•			•		•	•	•			•					
Fish Creek									•		316	•	•	•	•	•		•	•	•	•		•		•	•	•	•	•	•	•	•	
Fish Lake	91	•	\$	•							9	•	•	•		•	•	•				•	•	•	•				•		•		
Fork Lake	43	•														•	•	•		•	•				•			•	•				
Franchere Bay	200	•	\$			•		•	•		10	•	•	•	•	•	•	•			•	•	•	•				•	•	•	•		
French Bay	10												•			•	•	•		•			•	•	•				•				
Garner Lake	66					•		•	•		24		•	•		•	•	•	•		•		•	•	•	•	•	•	•	•	•		
Ghost Reservoir	112	•		•		•	•				5			•		•									•	•		•	•				
Goldeye Lake	44	•									3		•	•		•	•	•					•	•	•	•			•		•		
Gooseberry Lake	82			•	•	•	•		•	•	60	•	•	•		•		•			•								•				
Gregoire Lake	140	•	\$	•		•	•	•	•	•	40		•	•		•	•	•	•	•	•	•	•	•	•		•	•	•	•	•	•	
Hangingstone	57										4	•	•	•		•							•						•				
Hanmore	30	•	\$													•	•	•		•	•			•	•				•				
Harlech	17	•									2	•	•	•		•							•										
Heart River Dams 1 and 2	4	•									3		•			•	•							•		•							
Highwood/Cataract	204	•	\$	•		•				•	15	•	•	•		•							•						•				
Hilliard's Bay	189	•		•		•	•	•	•	•	22		•	•		•	•	•		•	•	•	•	•	•		•		•				
Horburg	12	•														•							•			•							
Hornbeck Creek	33	•																															
Indian Graves	44	•	\$	•												•																	
Island Lake	41	•										•				•		•						•									
Jackfish Lake	5	•		•						•		•				•							•	•	•								
James River Bridge	8	•														•		•															
James Wilson	17	•		•						•	4	•	•	•		•							•										
Jarvis Bay	200	•	\$	•	•	•	•	•	•	•						•		•			•	•	•	•		•	•	•	•	•	•	•	•

## Facilities and Services Information

Park or Recreation Area Name	Number Of Campsites	Facility Operator	Firewood Concession	Reservations	Water Hook-ups	Sewage Disposal	Electrical Hook-ups	Flush Toilets	Showers	Group Camping Area	Picnic Tables	Picnic Shelter	Fire pits	Water	Flush Toilets	Fishing	Fish Cleaning Station	Swimming	Change House	Beach	Playground	Horse Shoe Pits	Trails	Boating	Boat Launch	Hand Boat Launch	Park Office	Wheelchair Access	Public Phone	Food Concession	Boat Rentals	Interpretive Programs			
Kehiwin	46	•														•	•	•						•	•										
Kinbrook Island	166	•	\$	•	•	•			•		35		•	•		•	•	•			•	•	•	•	•		•	•	•	•					
Kootenay Plains	24	•								•	4	•	•	•		•							•												
Lakeland PRA																																			
- Ironwood Lake Campground	20															•	•	•						•	•		•								
- Pinehurst Lake Campground	70															•	•	•		•				•	•		•								
- Siebert Lake Campground	47	•	\$													•	•	•						•	•		•								
- Touchwood Lake Campground	100	•	\$													•		•		•	•			•	•		•			•					
Lakeland																																			
- Shaw Lake Day Use											10	•	•	•									•	•		•	•								
Lambert Creek	7	•											•	•		•																		•	
Lesser Slave Lake	113			•	•	•	•	•	•		16	•	•	•		•	•	•		•	•	•	•	•		•	•	•							
Little Bow	205	•	\$	•	•	•	•	•	•		74	•	•	•	•	•	•	•		•	•	•		•	•		•	•	•	•	•	•			
Little Bow Reservoir	25	•									9			•		•		•		•	•			•	•										
Little Fish Lake	14											•								•	•								•						
Little Sundance	8	•									7		•	•		•																			
Livingstone Falls	22	•									•	•	•	•		•							•												
Long Lake	220	•	\$	•	•	•	•	•	•		91	•	•	•	•	•	•	•	•	•	•	•	•	•	•	•	•		•	•	•	•			
Lovett River	17	•	\$	•												•							•			•							•		
Lundbreck Falls	65	•									3	•		•		•		•				•													
Maqua Lake	13										5		•	•				•					•			•									
Maycroft	12	•										•				•										•									
McLeod River	22	•											•	•		•																			
Medicine Lake	49	•	\$	•							6	•	•	•		•	•	•			•			•	•				•						
Midland			\$								50		•	•		•							•				•	•		•					•
Minnie Lake	8		\$									•		•		•		•						•	•										
Miquelon Lake	275	•	\$	•	•	•	•	•	•		169	•	•	•	•	•		•	•	•	•	•	•	•	•	•	•	•	•	•	•	•	•	•	•
Mitchell Lake	5	•														•								•		•									



## Facilities and Services Information

Park or Recreation Area Name	Number Of Campsites	Facility Operator	Firewood Concession	Reservations	Water Hook-ups	Sewage Disposal	Electrical Hook-ups	Flush Toilets	Showers	Group Camping Area	Picnic Tables	Picnic Shelter	Fire pits	Water	Flush Toilets	Fishing	Fish Cleaning Station	Swimming	Change House	Beach	Playground	Horse Shoe Pits	Trails	Boating	Boat Launch	Hand Boat Launch	Park Office	Wheelchair Access	Public Phone	Food Concession	Boat Rentals	Interpretive Programs			
Moonshine Lake	110	•		•		•	•	•	•	•	71	•	•	•		•	•	•	•		•	•	•	•	•	•	•	•	•	•	•				
Moose Lake	59	•	\$	•		•	•			•	20	•	•	•		•	•	•	•	•		•	•	•	•	•	•		•						
North Buck Lake	125	•	\$	•												•	•	•		•	•	•		•	•				•						
North Ram River	28	•								•						•								•											
Notikewin	19	•									20		•	•		•	•				•		•	•		•	•								
O'Brien											40		•	•		•		•			•				•										
Oldman River	40	•	\$			•					40	•	•	•		•										•									
Oldman River Dam	172	•	\$	•	•	•	•	•	•	•	110	•	•	•		•	•	•	•		•	•		•	•	•	•	•	•	•		•			
Oldman River North	10	•								•	4		•	•		•																			
Park Lake	40					•	•			•	60	•	•	•		•	•	•	•	•	•	•	•		•		•	•	•	•	•	•			
Payne Lake	30	•	\$								2		•	•		•								•	•	•									
Pembina Forks	20	•									6	•	•	•		•																			
Pembina River	132	•	\$	•		•	•	•	•	•	35	•	•	•		•	•	•		•	•	•	•		•	•	•	•	•			•			
Peppers Lake	16	•														•	•						•	•	•										
Peter Lougheed Park	601	•	\$	•	•	•	•	•	•	•	82	•	•	•	•	•	•						•	•	•			•	•	•		•			
Phyllis Lake	8	•														•		•						•		•									
Pierre Grey's Lake	83	•				\$				•	5	•	•	•		•	•						•	•	•	•						•			
Pigeon Lake	410	•	•	•	•	•	•	•	•	•	72		•	•	•	•	•	•	•	•	•	•	•	•	•	•	•	•	•	•	•	•	•		
Police Outpost	46	•	\$			•				•	10			•		•	•				•		•	•	•	•	•		•				•		
Prairie Creek	50	•								•	5	•	•	•		•																			
Queen Elizabeth	56					•	•			•	33	•	•	•				•		•	•	•	•	•	•		•	•	•						
Racehorse	38	•									2	•	•	•		•							•												
Ram Falls	54	•		•							20	•	•	•		•							•									•			
Raven	16	•	•													•		•																	
Red Deer River	64	•		•							4	•				•							•												
Red Lodge	120	•	\$	•		•		•	•		36	•	•			•		•		•	•	•					•	•	•						
Rochon Sands	69		\$			•				•	25	•	•	•		•	•	•	•		•	•		•	•		•	•	•						

## Facilities and Services Information

Park or Recreation Area Name	Number Of Campsites	Facility Operator	Firewood Concession	Reservations	Water Hook-ups	Sewage Disposal	Electrical Hook-ups	Flush Toilets	Showers	Group Camping Area	Picnic Tables	Picnic Shelter	Fire pits	Water	Flush Toilets	Fishing	Fish Cleaning Station	Swimming	Change House	Beach	Playground	Horse Shoe Pits	Trails	Boating	Boat Launch	Hand Boat Launch	Park Office	Wheelchair Access	Public Phone	Food Concession	Boat Rentals	Interpretive Programs	
Rock Lake	93	•		•							7	•	•	•		•	•	•					•	•	•	•							
Saskatoon Island	96	•		•		•	•	•	•	•	64	•	•	•				•	•	•	•	•	•	•	•		•	•	•	•		•	
Saunders	7	•									2		•			•									•	•							
Seven Mile	36	•		•												•							•										
Sheep River	207	•	\$	•						•	73	•	•	•		•					•		•						•				
Shunda Viewpoint	6	•																															
Sibbald	171	•	\$	•						•	35	•	•	•		•							•				•					•	
Simonette River	25															•																	
Sir Winston Churchill	72	•	\$	•		•		•	•		34	•	•	•		•	•	•	•	•	•				•	•		•	•	•		•	
Smoky River South (Blue Bridge)	22	•		•												•								•	•								
Snow Creek Group Camp		•		•						•						•						•	•										
South Fork	22	•								•	7		•	•		•																	
Spray Valley	150	•	\$	•							105	•	•	•		•					•		•	•		•			•			•	
St. Mary's Reservoir	130									•		•	•			•		•		•	•			•	•								
Strachan	27	•									8	•	•	•		•																	
Strathcona											47	•			8								•					•	•	•			
Sulphur Gates	11	•		•																			•										
Sulphur Lake	11								•	•	15		•	•		•	•						•	•	•								
Sundance	13	•									2		•	•																			
Swan Lake	16	•									10	•	•	•		•	•							•	•								
Sylvan Lake											50	•		•	•	•		•	•	•	•	•		•				•	•	•			
Tay River	34	•														•		•															
The Narrows	61		\$													•	•																
Thompson Creek	55	•									6	•	•	•		•							•										
Thunder Lake	127	•	\$	•		•	•	•	•	•	73	•	•	•		•	•	•	•	•	•	•		•	•	•	•	•	•	•	•	•	
Tillebrook	120	•	\$	•	•	•	•	•	•												•	•	•					•	•	•			•
Tolman Bridge	69		•									•				•					•			•			•	•					
Travers Reservoir	20										10	•	•	•		•								•	•								
Twin Lakes	49	•										•				•	•	•		•			•			•							

## Facilities and Services Information

Park or Recreation Area Name	Number Of Campsites	Facility Operator	Firewood Concession	Reservations	Water Hook-ups	Sewage Disposal	Electrical Hook-ups	Flush Toilets	Showers	Group Camping Area	Picnic Tables	Picnic Shelter	Fire pits	Water	Flush Toilets	Fishing	Fish Cleaning Station	Swimming	Change House	Beach	Playground	Horse Shoe Pits	Trails	Boating	Boat Launch	Hand Boat Launch	Park Office	Wheelchair Access	Public Phone	Food Concession	Boat Rentals	Interpretive Programs					
Upper Shunda Creek	25	•	\$	•												•							•														
Vermilion	111	•	\$	•	•	•	•	•	•	•	60	•	•	•	•	•	•		•	•	•	•	•				•	•	•								
Wabamun Lake	287	•	\$	•		•	•	•	•	•	103	•	•	•	•	•	•	•	•	•	•	•	•	•	•	•	•	•	•	•	•	•					
Waskahigan River	24															•																					
Waterton Reservoir	25	•									20	•	•	•		•		•		•	•			•	•	•											
Whitney Lakes	191					•	•	•	•	•	41	•	•	•		•	•	•		•	•	•	•	•	•		•	•					•				
Wildhay River Group Use		•		•						•						•																		•			
Wildhorse (Kinky Lake)	33	•									6		•	•		•	•						•	•	•												
William A. Switzer	224	•		•		•	•	•	•	•	45		•	•		•	•	•		•	•	•	•	•	•	•	•	•	•	•	•	•	•	•	•		
Williamson	67	•		•		•	•				22	•	•	•		•	•	•	•	•	•	•		•	•	•	•	•	•	•	•	•					
Willow Creek	40	•		•						•	10	•	•			•										•			•					•			
Winagami Lake	63	•		•		•	•			•	50	•	•	•		•	•		•	•	•	•	•	•	•	•	•	•	•	•	•	•	•	•			
Wolf Lake	65	•				•										•	•							•	•												
Woolford	30									•	6		•			•					•																
Writing-On-Stone	64	•	\$			•	•	•	•	•	15	•	•	•		•		•		•	•					•	•	•	•	•	•	•	•	•	•	•	
Wyndham-Carseland	196	•				•				•	15		•	•		•					•	•			•	•	•	•	•	•	•	•	•	•	•	•	
Young's Point	92	•		•		•	•	•	•	•	26		•	•	•	•	•	•		•	•	•	•	•	•	•	•	•	•	•	•	•	•	•	•	•	•